

Wind

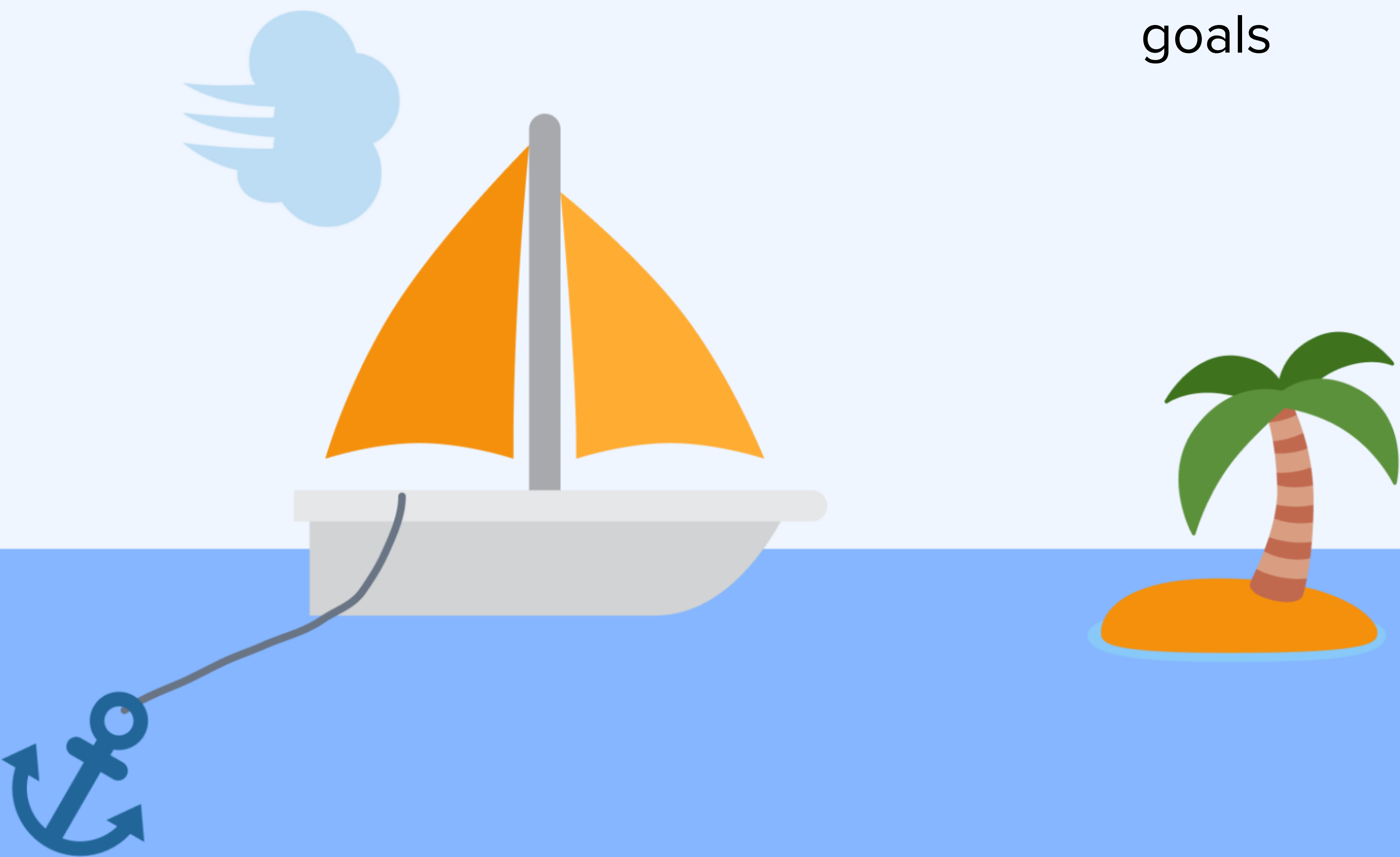
What is pushing us forward and what else do we need to continue pushing us forward?

saddle mounts and "copper" battery powered stoves	Watt Diet	learn from other Bay Area Cities	must identify easy targets where building envelope is more important than heat pumps	exemptions for difficult cases	Robert Whitehair peer coaching
work together with manufacturers of electric equipment	go for low hanging	need info on total GHG reductions for each option	San Mateo County heat pump advocates	Tie incentives to rent protections	Renter protections

Island

What are we working towards?

Decarbonize existitng residential and commercial buildings to meet state climate goals



Anchor

What is holding us back?

			difficult targets are multi-family homes in city of san mateo are not well suited for heat pump upgrades. electrical power is an issue, as requirements for engineered solutions.	MF homes not well suited for heat pump upgrades- electrical power is an issue	lack of drop-in products (40G small diameter water heter wont be available for another few years)
			Large percentage of buidlings that cannot replace at end of life at a reasonable cost	power outages/ need grid resiliency	Rent increases in multifamily
			Lack of information and support for implementation	Lack of cohesive city support for resident transitions	PG&E policies against solar