

# SAFE POINT STORAGE SAN MATEO

922 S. CLAREMONT STREET  
SAN MATEO , CA 94402



DIRECTORY

OWNER

STALEY POINT CAPITAL

11150 SANTA MONICA BLVD. SUITE 700

LOS ANGELES, CA. 90025

TELEPHONE: (310) 929-8097

CONTACT: MIKE CHANG

EMAIL: mike@staleypoint.com

ARCHITECT

JORDAN ARCHITECTS, INC.

131 CALLE IGLESIA, SUITE 100,

SAN CLEMENTE, CA 92673

TELEPHONE: (949) 388-8090

FACSIMILE: (949) 388-8290

CONTACT: MARCELO QUIROGA

E-MAIL: mquiroga@jordanarchitects.com

SITE DATA

BASIS OF DESIGN

ZONING

OVERLAY

STRUCTURE HEIGHT

LOT COVERAGE

FAR

REQUIRED

30' MAX

NA

1.0 MAX(±59,746 SF)

PROVIDED

M1-MANUFACTURING

N/A

30'-0"

67% (40,200 SF)

.99 (58,620 SF) MINUS BASEMENT

SETBACKS

FRONT

SIDE

15 FT.

10 FT.

COMPLIES

COMPLIES

PARKING - MINI STORAGE REQUIREMENTS

1 SPACE PER 4K ±1 PER MANAGERS OFFICE

OFF-STREET LOADING PER SAN MATEO MUNICIPAL CODE 27.64.310-390

BICYCLE PARKING: SHORT TERM 1 SPACE PER 5,000 S.F. LONG TERM 1 PER 20,000 S.F. (SAN MATEO MUNICIPAL CODE 27.64.292)

1 SPACE PER 4K ±1 PER MANAGERS OFFICE = 20 SPACES

TWO 10' X 50' LOADING SPACES

SHORT TERM: 10 SPACES LONG TERM: 3 SPACES

STANDARD 8.5 X 18-12 SPACES COMPACT 7.5X17.5 SPACES ACCESSIBLE 7 SPACES CLEAN ARVAN POOL 1 SPACE

TWO 10' X 50' LOADING SPACES

SHORT TERM:10 SPACES LONG TERM: 4 SPACES

BUILDING AREA TABULATIONS ( Square Feet )

BUILDING

SELF STORAGE

WINE STORAGE

MANAGER'S OFFICE

TOTAL

(E) BUILDING A

2,181

2,338

1,254

5,773

(E) BUILDING B

14,357

14,357

(E) BUILDING C

5,056

5,056

NEW BUILDING D - BASEMENT

18,420

18,420

NEW BUILDING D - 1ST. LEVEL

15,014

15,014

NEW BUILDING D - 2ND. LEVEL

18,420

18,420

TOTAL GROSS AREA

71,267

2,338

1,254

77,040

SCOPE OF WORK

PROPOSED MINI-STORAGE PROJECT WITH FOUR (4) BUILDINGS TOTALING 77,040 SF ON A 59,746 SF LOT. THREE (3) EXISTING SINGLE-STORY BUILDINGS TOTALING 25,186 SF ARE TO BE RETAINED AND REHABILITATED. ONE (1) NEW TWO-STORY BUILDING WITH ONE LEVEL OF BASEMENT TO BE CONSTRUCTED TOTALING 51,854 SF.

BUILDING CONSTRUCTION TYPE: IIB  
BUILDINGS ARE EQUIPPED WITH AUTOMATIC FIRE SPRINKLER SYSTEM IN ACCORDANCE WITH NFPA 13.

VICINITY MAP

STALEY POINT CAPITAL  
SAFE POINT STORAGE SAN MATEO  
SAN MATEO, CA

COVER SHEET

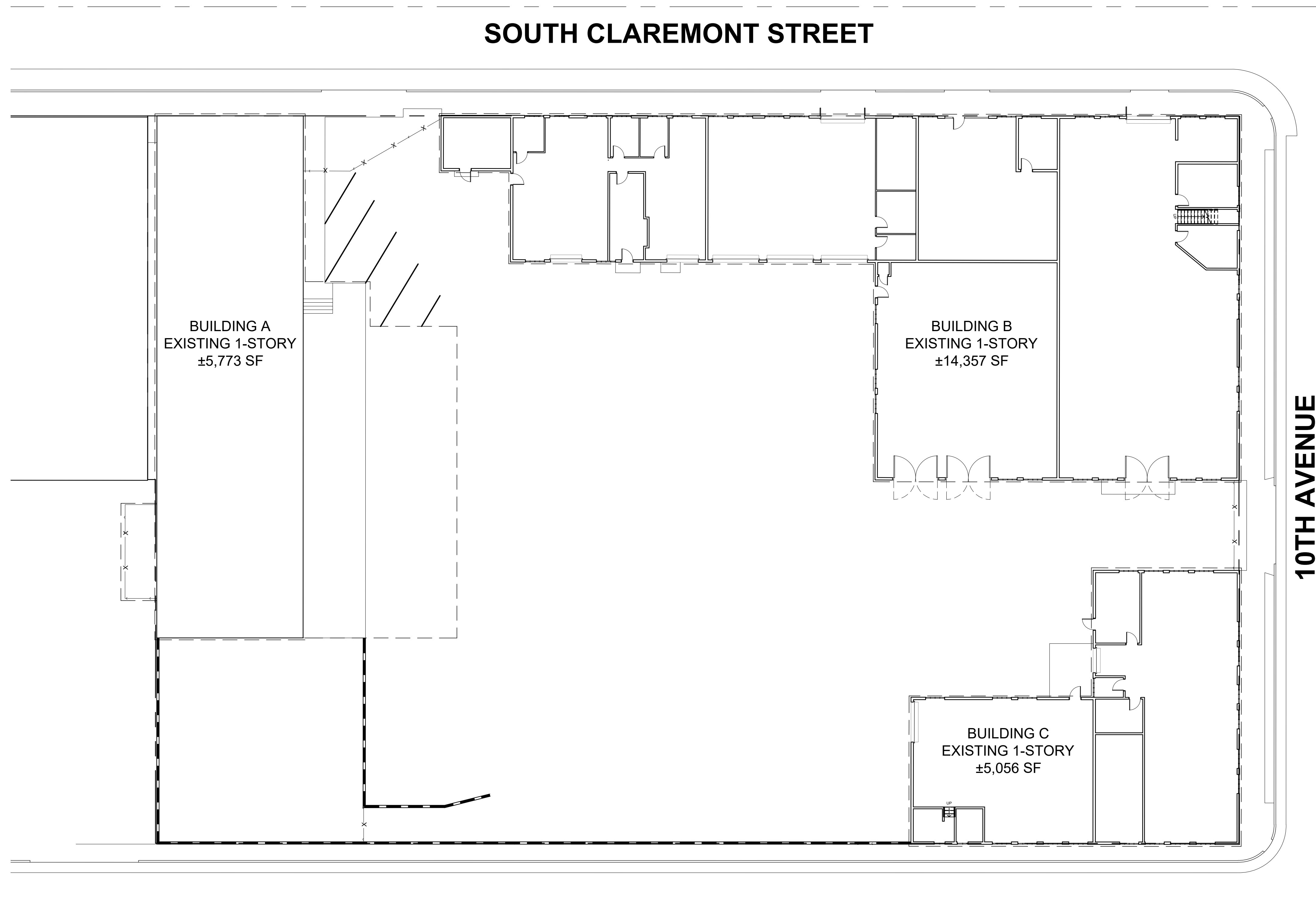
THIS DRAWING AND ITS CONTENTS ARE INSTRUMENTS OF SERVICE AND ARE THE COPYRIGHTED PROPERTY OF JORDAN ARCHITECTS, INC. THE USE IS EXPRESSLY INTENDED FOR THE PROJECT NOTED ABOVE AND MAY NOT BE REUSED OR REPRODUCED IN WHOLE OR IN PART WITHOUT THE WRITTEN PERMISSION OF JORDAN ARCHITECTS, INC. "COPYRIGHT" YEAR OF FIRST PUBLICATION 2022 JORDAN ARCHITECTS, INC.

JOB NUMBER: 22-913  
SCALE: NONE  
DATE: 01/18/2024

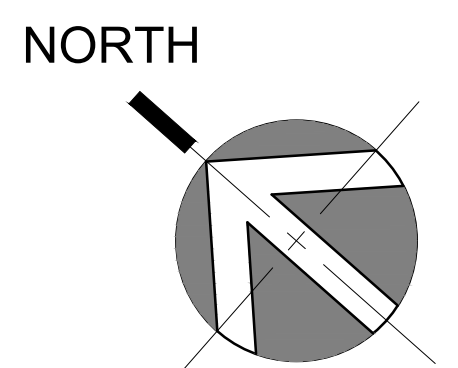
A.1

ja

JORDAN  
ARCHITECTS  
131 CALLE IGLESIA, SUITE 100  
SAN CLEMENTE, CA 92672  
949.388.8090



EXISTING BUILDINGS SITE PLAN ①  
1/16"=1'-0"



STALEY POINT CAPITAL  
SAFE POINT STORAGE SAN MATEO  
SAN MATEO, CA

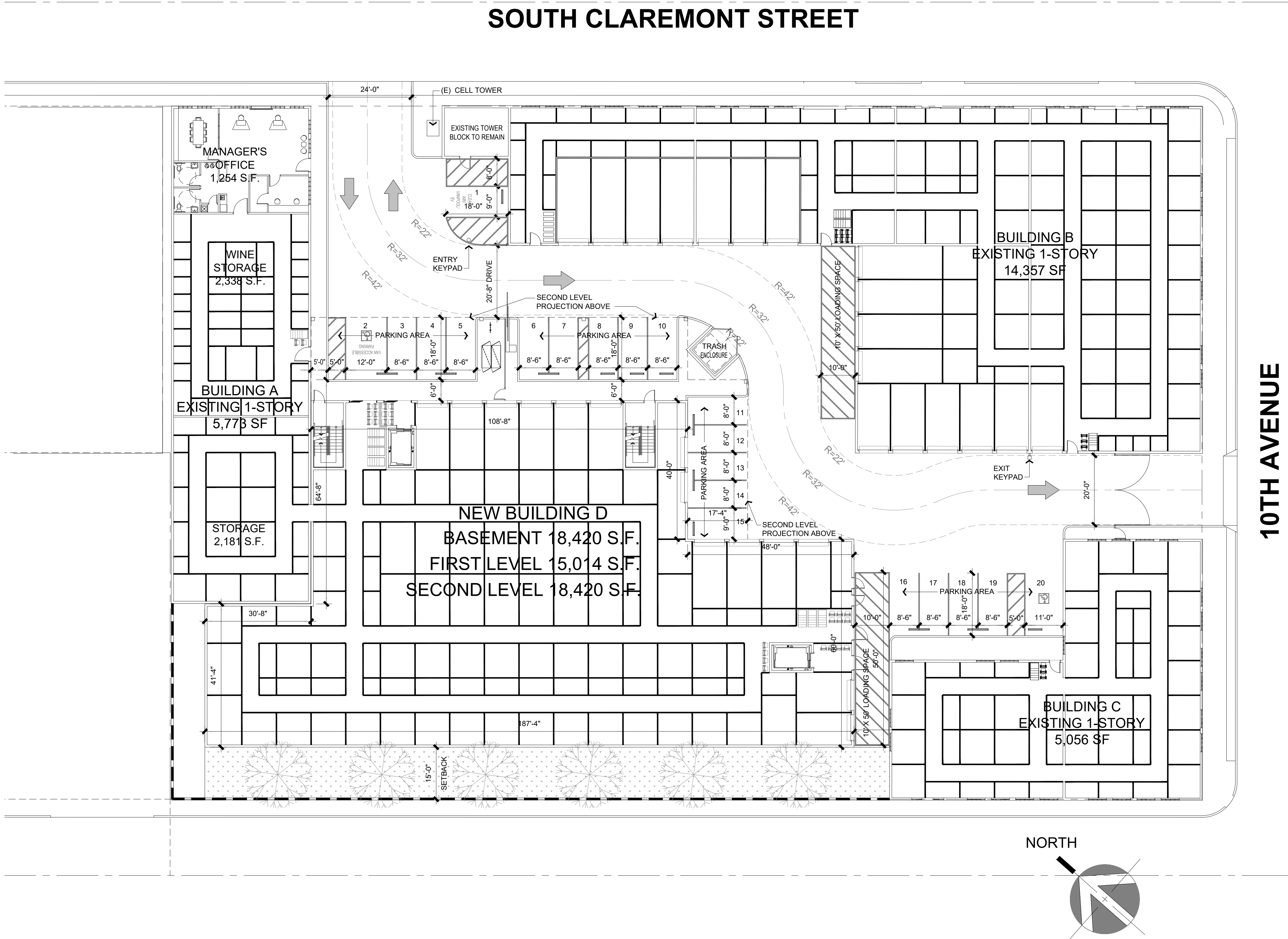
# EXISTING BUILDINGS

THIS DRAWING AND ITS CONTENTS ARE INSTRUMENTS OF SERVICE AND ARE THE COPYRIGHTED PROPERTY OF JORDAN ARCHITECTS, INC. THE USE IS EXPRESSLY INTENDED FOR THE PROJECT NOTED ABOVE AND MAY NOT BE REUSED OR REPRODUCED IN WHOLE OR IN PART WITHOUT THE WRITTEN PERMISSION OF JORDAN ARCHITECTS, INC. "COPYRIGHT" YEAR OF FIRST PUBLICATION 2022 JORDAN ARCHITECTS, INC.

JOB NUMBER: 22-913  
SCALE: 1"=16'-0"  
DATE: 12/19/2023

A.2

*ja*  
**JORDAN**  
ARCHITECTS  
131 CALLE IGLESIA, SUITE 100  
SAN CLEMENTE, CA 92672  
949.388.8090



SITE DATA				
LOT AREA	59,746	SQ. FT.		
	1.37	ACRES		
BASIS OF DESIGN				
	REQUIRED	PROVIDED		
ZONING	M1-MANUFACTURING			
OVERLAY	N/A			
STRUCTURE HEIGHT	30' MAX	30'-0"		
LOT COVERAGE	NA	67% (40,200 SF)		
FAR	1.0 MAX(±59,746 SF)	.99 (58,620 SF) MINUS BASEMENT		
SETBACKS				
FRONT SIDE	15 FT. 10 FT.	COMPLIES COMPLIES		
PARKING - MINI STORAGE REQUIREMENTS				
1 SPACE PER 4K +1 PER MANAGERS OFFICE:	1 SPACE PER 4K +1 PER MANAGERS OFFICE = 20 SPACES	STANDARD 8.5 X 18: 12 SPACES COMPACT 7.5X17: 5 SPACES ACCESSIBLE: 2 SPACES CLEAN AIR/VAN POOL: 1 SPACE		
OFF-STREET LOADING PER SAN MATEO MUNICIPAL CODE 27.64.310-390	TWO 10' X 50' LOADING SPACES	TWO 10' X 50' LOADING SPACES		
BICYCLE PARKING: SHORT TERM 1 SPACE PER 5,000 S.F. LONG TERM 1 PER 20,000 S.F. (SAN MATEO MUNICIPAL CODE 27.64.262)	SHORT TERM: 10 SPACES LONG TERM: 3 SPACES	SHORT TERM:10 SPACES LONG TERM: 4 SPACES		
BUILDING AREA TABULATIONS ( Square Feet )				
BUILDING	SELF STORAGE	WINE STORAGE	MANAGER'S OFFICE	TOTAL
(E) BUILDING A	2,181	2,338	1,254	5,773
(E) BUILDING B	14,357			14,357
(E) BUILDING C	5,056			5,056
NEW BUILDING D - BASEMENT	18,420			18,420
NEW BUILDING D - 1ST. LEVEL	15,014			15,014
NEW BUILDING D - 2ND. LEVEL	18,420			18,420
TOTAL GROSS AREA	71,267	2,338	1,254	77,040

BUILDING CONSTRUCTION TYPE: IIB  
BUILDINGS ARE EQUIPPED WITH AUTOMATIC FIRE SPRINKLER SYSTEM IN ACCORDANCE WITH NFPA 13.

STALEY POINT CAPITAL  
SAFE POINT STORAGE SAN MATEO  
SAN MATEO, CA

PRELIMINARY SITE PLAN

THIS DRAWING AND ITS CONTENTS ARE INSTRUMENTS OF SERVICE AND ARE THE COPYRIGHTED PROPERTY OF JORDAN ARCHITECTS, INC. THE USE IS EXPRESSLY INTENDED FOR THE PROJECT NOTED ABOVE AND MAY NOT BE REUSED OR REPRODUCED IN WHOLE OR IN PART WITHOUT THE WRITTEN PERMISSION OF JORDAN ARCHITECTS, INC. "COPYRIGHT" YEAR OF FIRST PUBLICATION 2022 JORDAN ARCHITECTS, INC.

JOB NUMBER: 22-913  
SCALE: 1"=16'-0"  
DATE: 12/19/2023

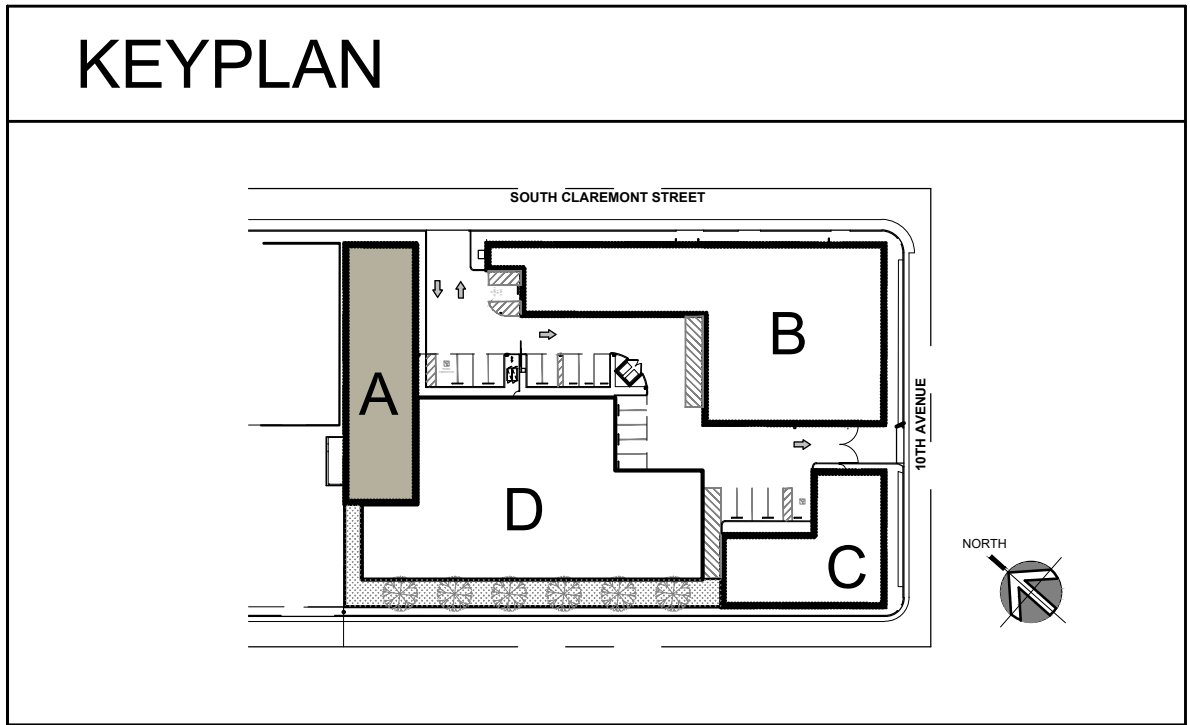
A.3



JORDAN  
ARCHITECTS  
131 CALLE IGLESIA, SUITE 100  
SAN CLEMENTE, CA 92672  
949.388.8090



EXISTING BUILDING A FLOOR PLAN 1  
1/8"=1'-0"



STALEY POINT CAPITAL  
SAFE POINT STORAGE SAN MATEO  
SAN MATEO, CA

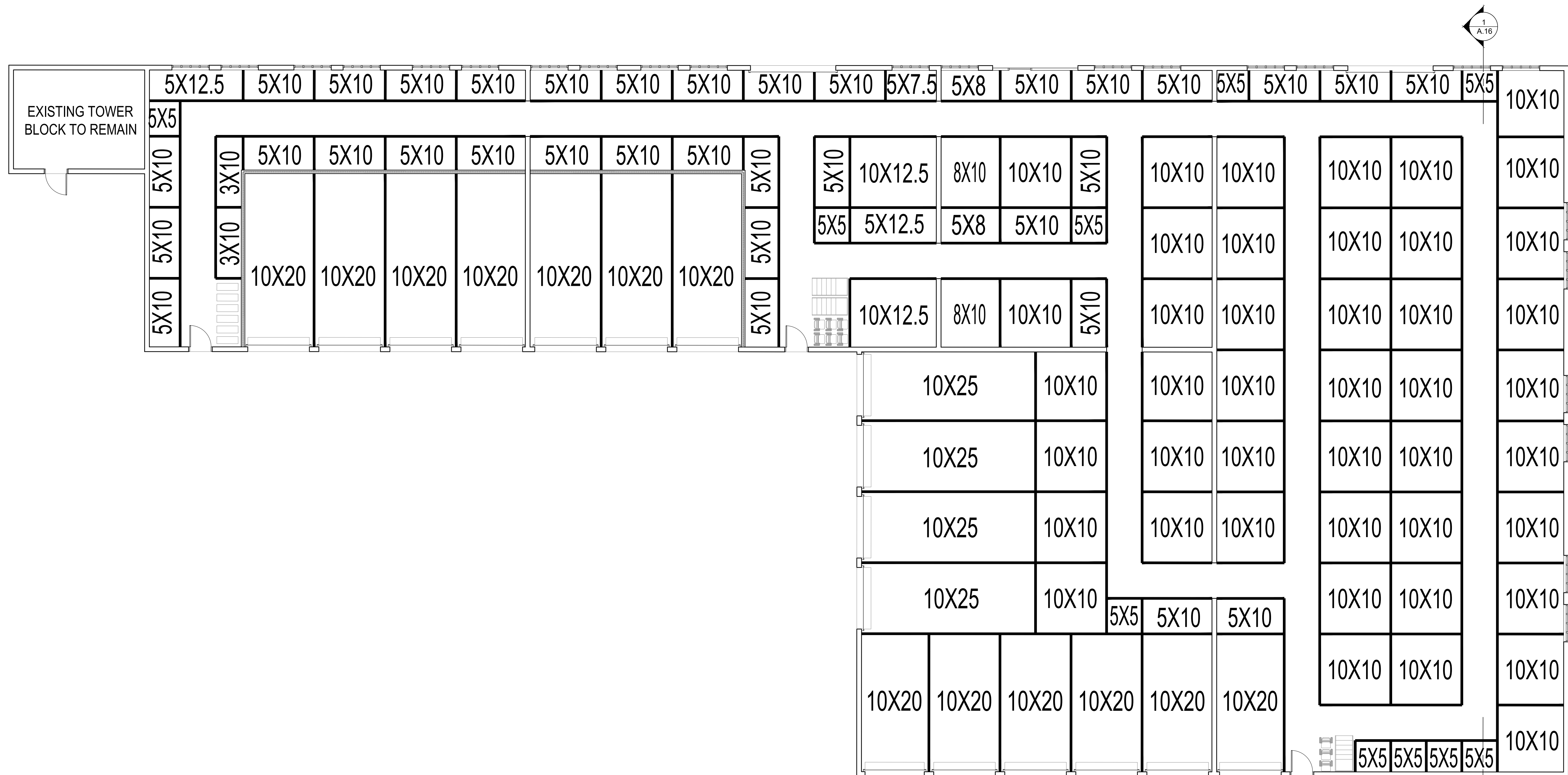
(E) BLDG. A FLOOR PLAN

THIS DRAWING AND ITS CONTENTS ARE INSTRUMENTS OF SERVICE AND ARE THE COPYRIGHTED PROPERTY OF JORDAN ARCHITECTS, INC. THE USE IS EXPRESSLY INTENDED FOR THE PROJECT NOTED ABOVE AND MAY NOT BE REUSED OR REPRODUCED IN WHOLE OR IN PART WITHOUT THE WRITTEN PERMISSION OF JORDAN ARCHITECTS, INC. "COPYRIGHT" YEAR OF FIRST PUBLICATION 2022 JORDAN ARCHITECTS, INC.

JOB NUMBER: 22-913  
SCALE: 1/8"=1'-0"  
DATE: 12/19/2023

A.4

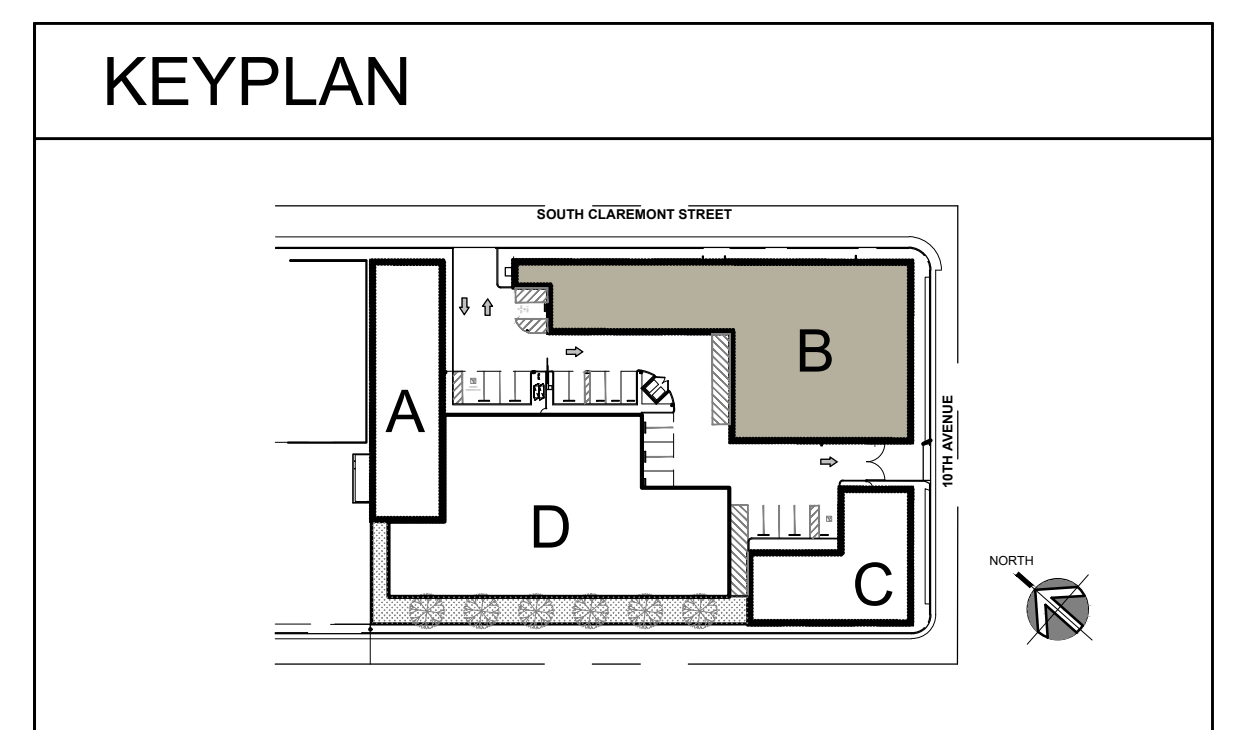
*ja*  
**JORDAN**  
ARCHITECTS  
131 CALLE IGLESIA, SUITE 100  
SAN CLEMENTE, CA 92672  
949.388.8090



EXISTING BUILDING B FLOOR PLAN  
1/8"=1'-0"

1

1  
A.16



STALEY POINT CAPITAL  
SAFE POINT STORAGE SAN MATEO  
SAN MATEO, CA

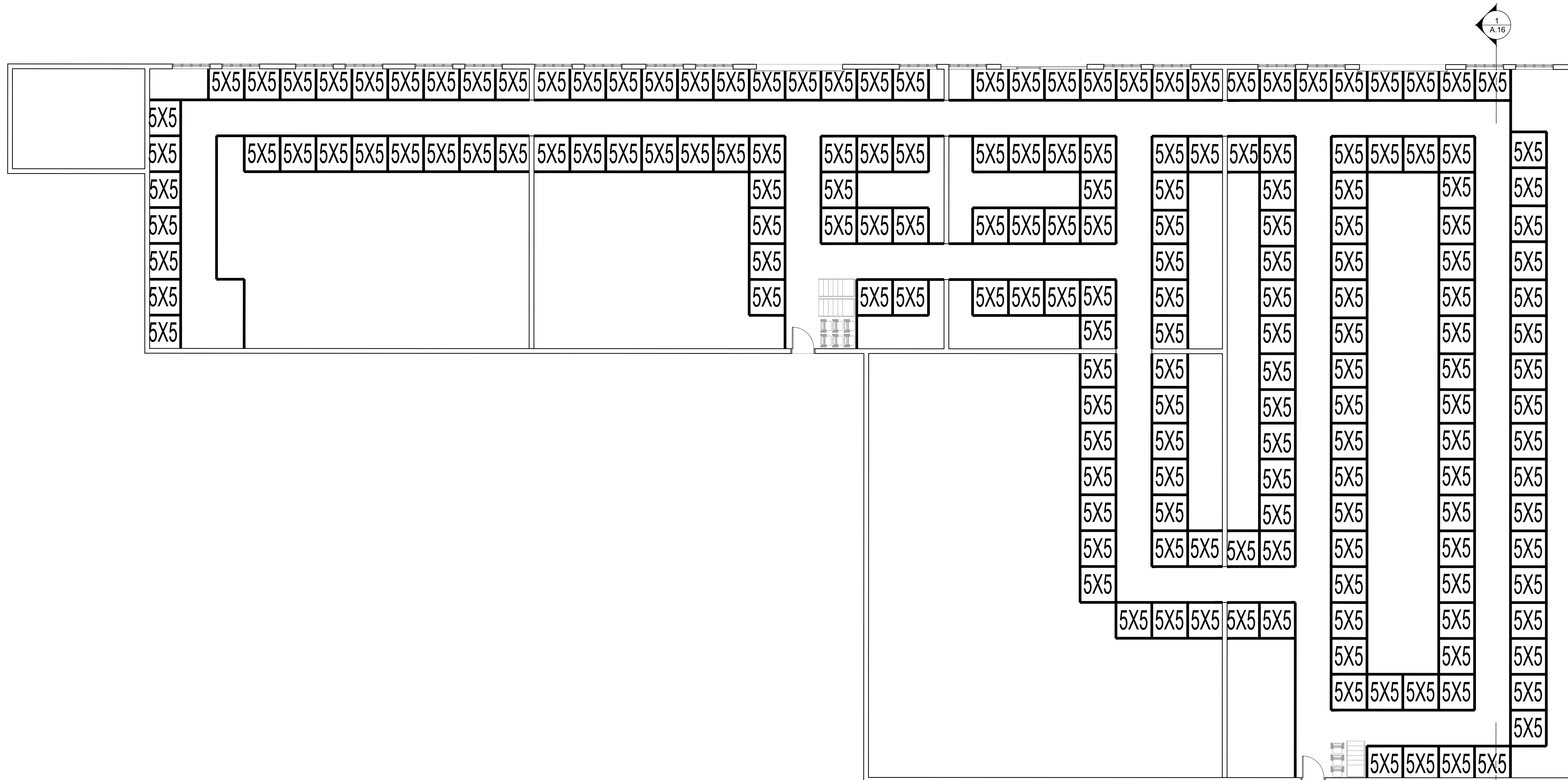
(E) BLDG. B FLOOR PLAN

THIS DRAWING AND ITS CONTENTS ARE INSTRUMENTS OF SERVICE AND ARE THE COPYRIGHTED PROPERTY OF JORDAN ARCHITECTS, INC. THE USE IS EXPRESSLY INTENDED FOR THE PROJECT NOTED ABOVE AND MAY NOT BE REUSED OR REPRODUCED IN WHOLE OR IN PART WITHOUT THE WRITTEN PERMISSION OF JORDAN ARCHITECTS, INC. "COPYRIGHT" YEAR OF FIRST PUBLICATION 2022 JORDAN ARCHITECTS, INC.

JOB NUMBER: 22-913  
SCALE: 1/8"=1'-0"  
DATE: 12/19/2023

A.5

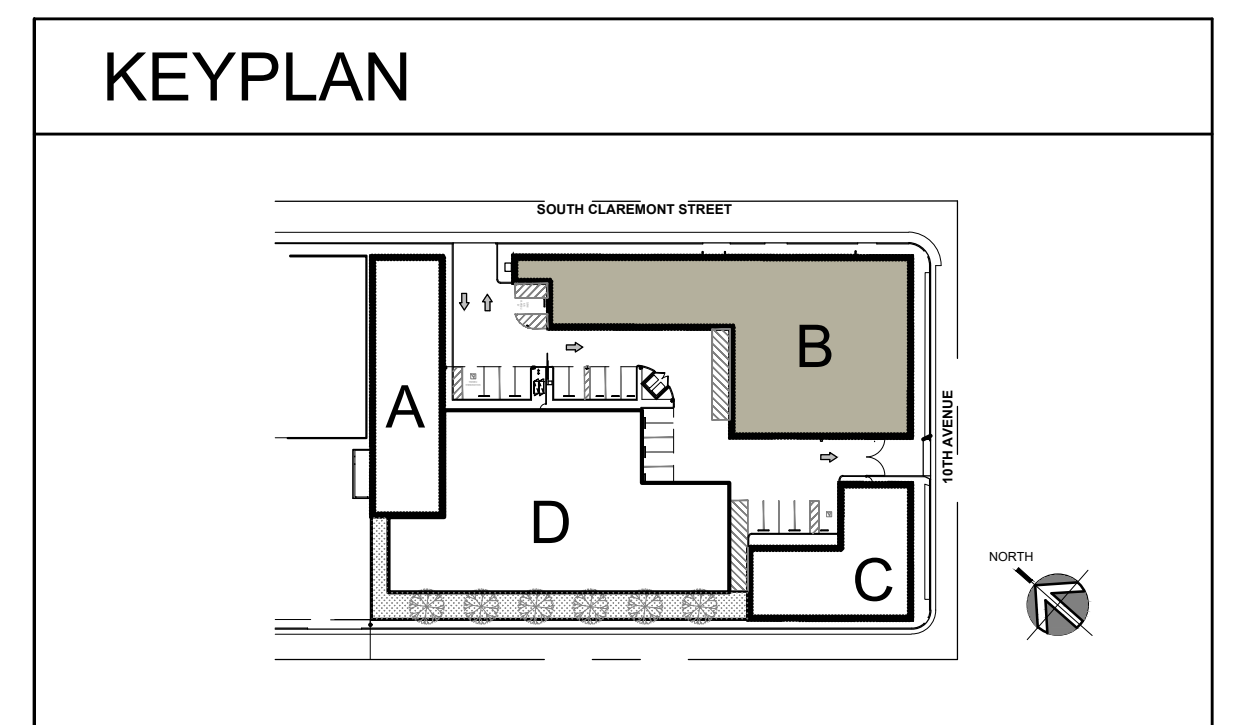




EXISTING BUILDING B LOCKER PLAN

1/8"=1'-0"

1



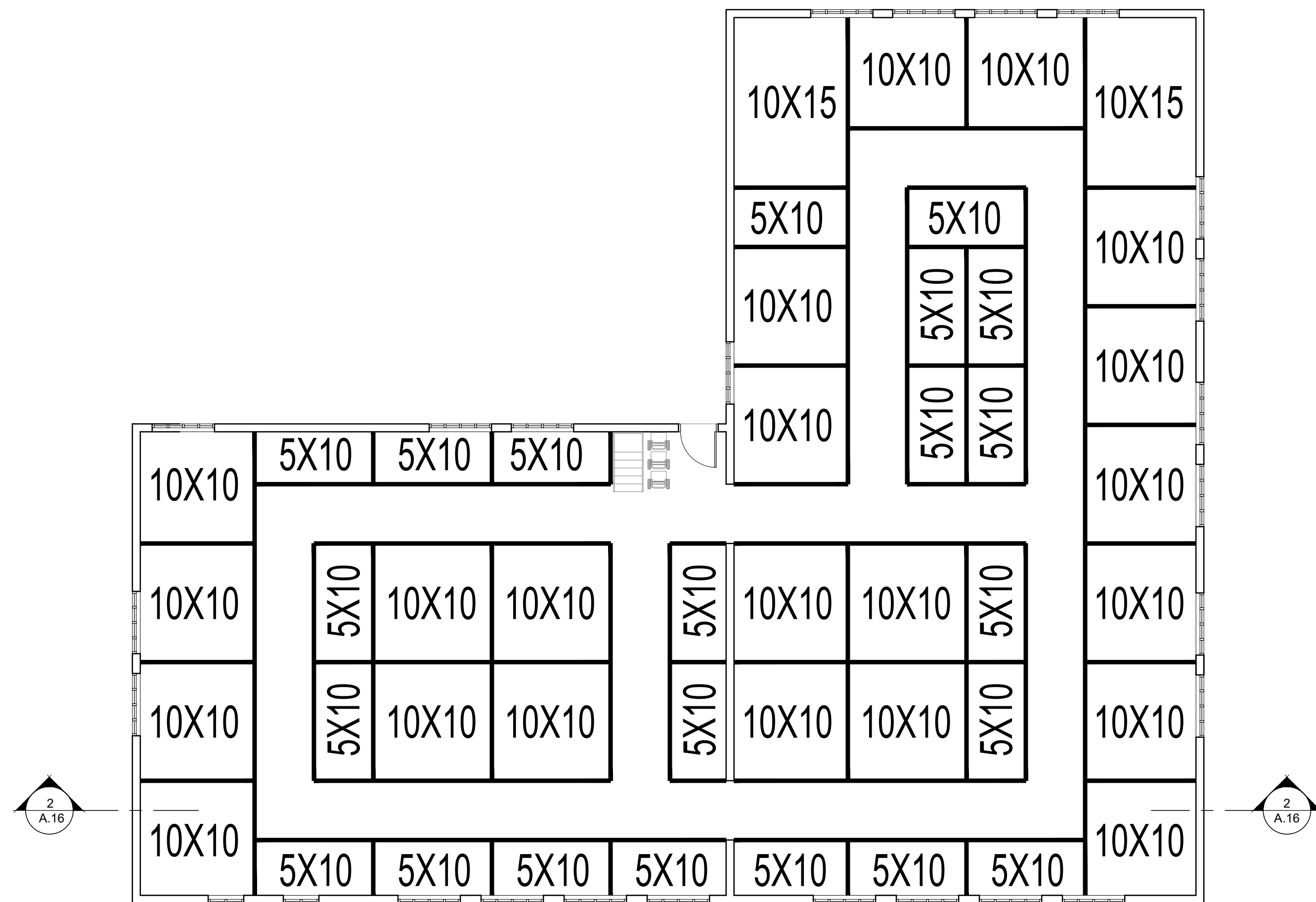
# STALEY POINT CAPITAL SAFE POINT STORAGE SAN MATEO (E) BLDG. B LOCKERS PLAN SAN MATEO, CA

THIS DRAWING AND ITS CONTENTS ARE INSTRUMENTS OF SERVICE AND ARE THE COPYRIGHTED PROPERTY OF JORDAN ARCHITECTS, INC. THE USE IS EXPRESSLY INTENDED FOR THE PROJECT NOTED ABOVE AND MAY NOT BE REUSED OR REPRODUCED IN WHOLE OR IN PART WITHOUT THE WRITTEN PERMISSION OF JORDAN ARCHITECTS, INC. "COPYRIGHT" YEAR OF FIRST PUBLICATION 2022 JORDAN ARCHITECTS, INC.

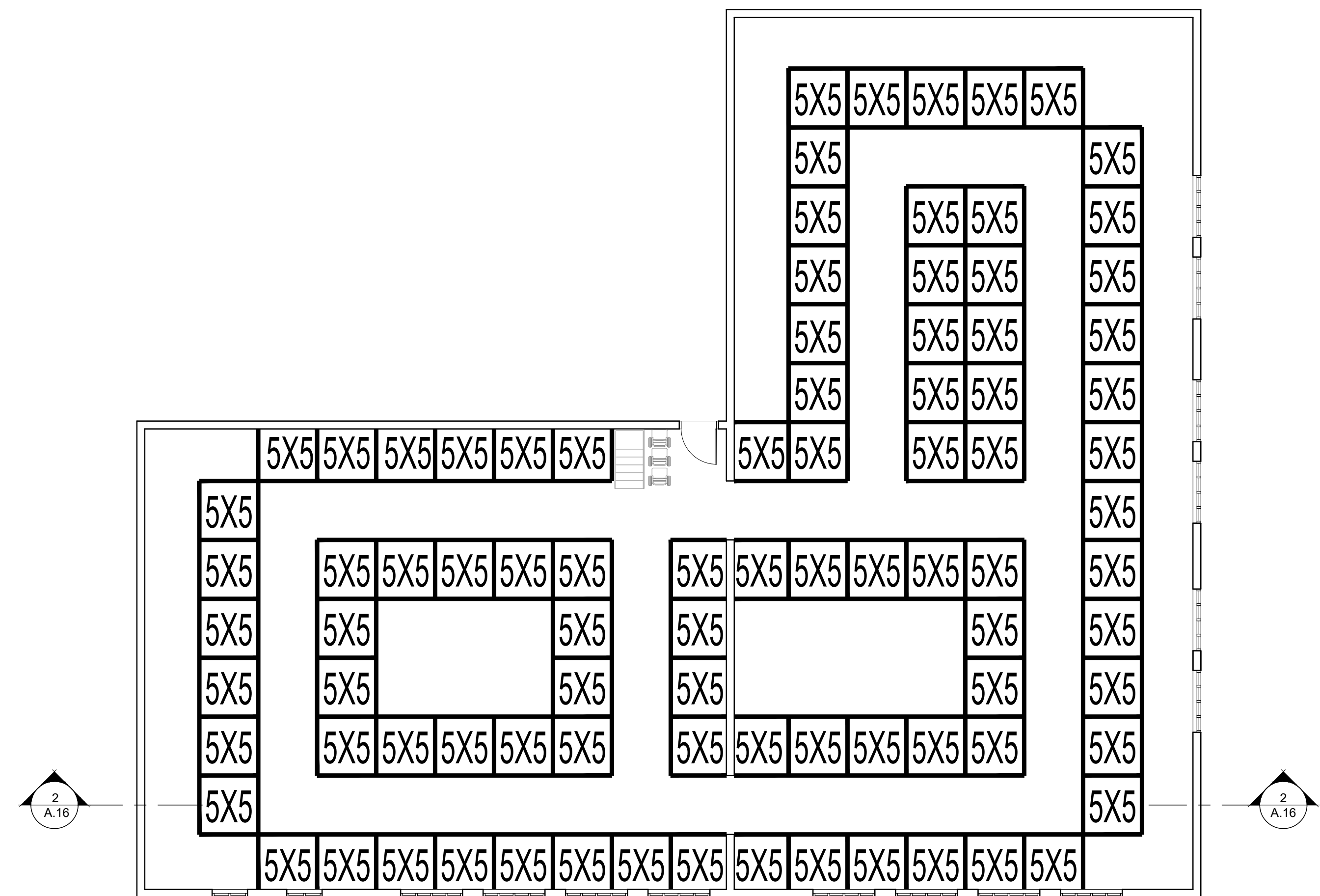
JOB NUMBER: 22-913  
SCALE: 1/8"=1'-0"  
DATE: 12/19/2023

A.6

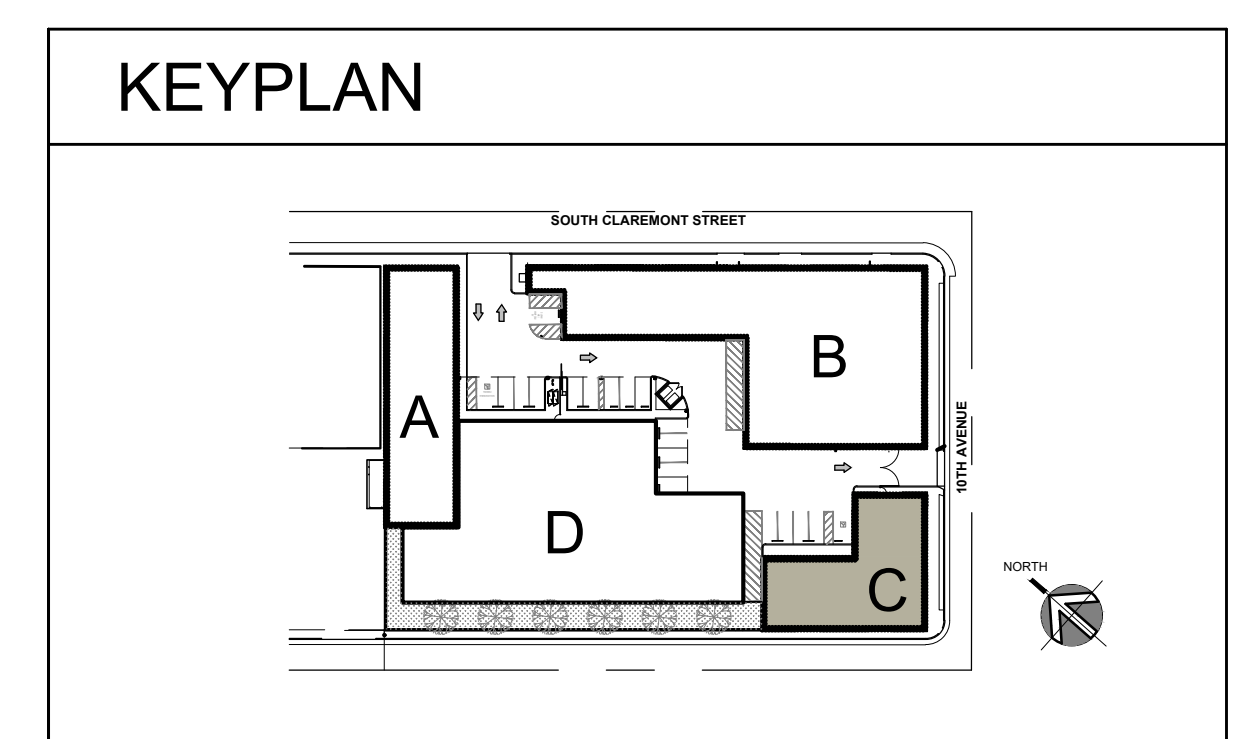




EXISTING BUILDING C FLOOR PLAN 1  
1/8"=1'-0"



EXISTING BUILDING C LOCKERS PLAN 2  
1/8"=1'-0"



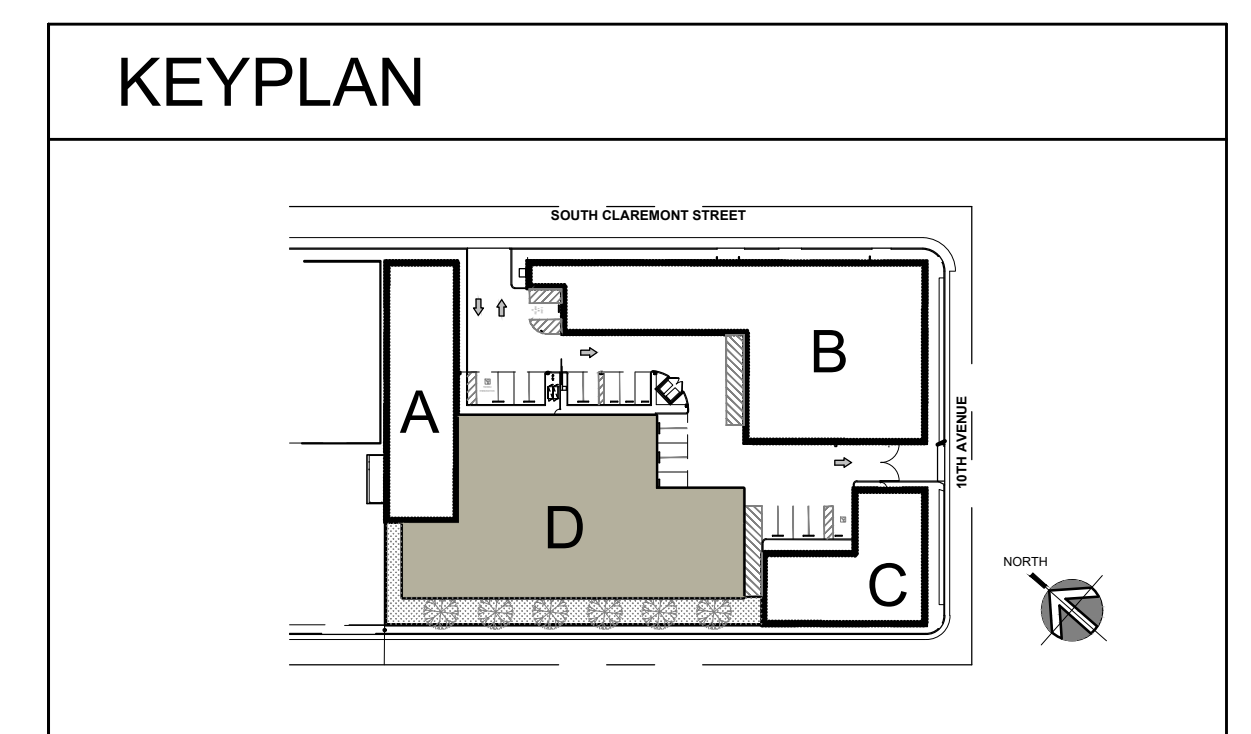
# STALEY POINT CAPITAL SAFE POINT STORAGE SAN MATEO (E) BLDG. C FLOOR & LOCKERS PLAN SAN MATEO, CA

THIS DRAWING AND ITS CONTENTS ARE INSTRUMENTS OF SERVICE AND ARE THE COPYRIGHTED PROPERTY OF JORDAN ARCHITECTS, INC. THE USE IS EXPRESSLY INTENDED FOR THE PROJECT NOTED ABOVE AND MAY NOT BE REUSED OR REPRODUCED IN WHOLE OR IN PART WITHOUT THE WRITTEN PERMISSION OF JORDAN ARCHITECTS, INC. "COPYRIGHT" YEAR OF FIRST PUBLICATION 2022 JORDAN ARCHITECTS, INC.

JOB NUMBER: 22-913  
SCALE: 1/8"=1'-0"  
DATE: 12/19/2023

A.7





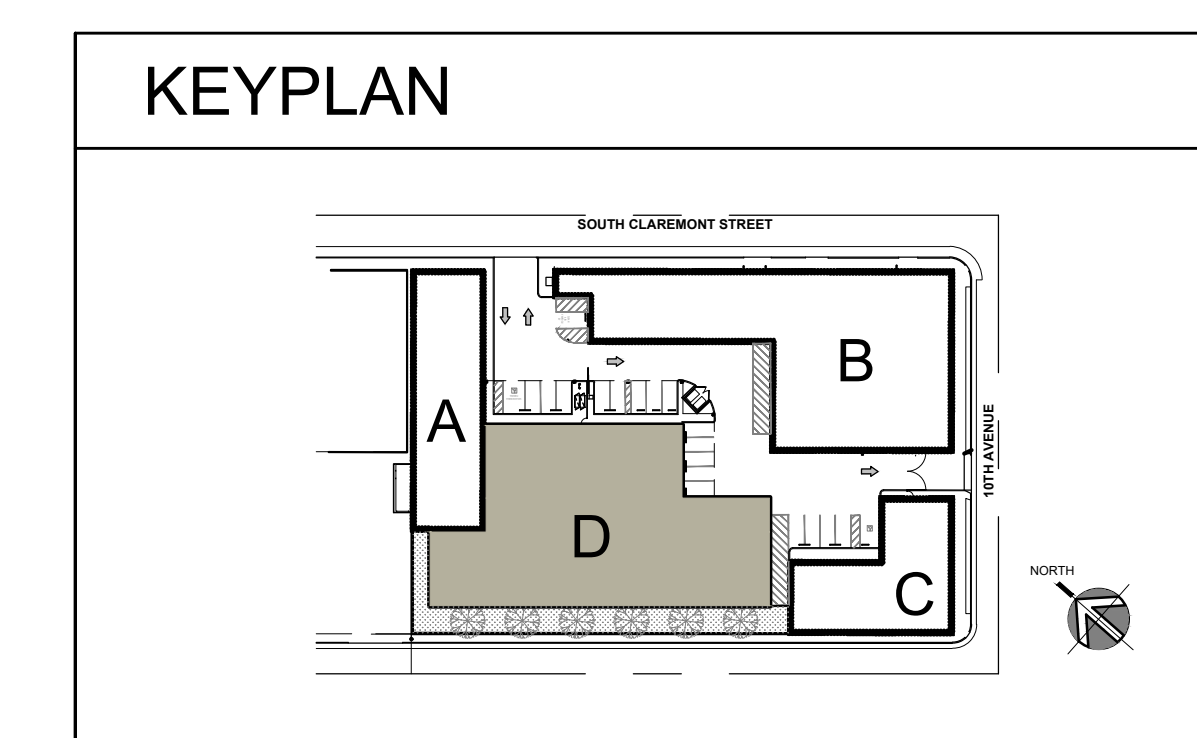
THIS DRAWING AND ITS CONTENTS ARE INSTRUMENTS OF SERVICE AND ARE THE COPYRIGHTED PROPERTY OF JORDAN ARCHITECTS, INC. THE USE IS EXPRESSLY INTENDED FOR THE PROJECT NOTED ABOVE AND MAY NOT BE REUSED OR REPRODUCED IN WHOLE OR IN PART WITHOUT THE WRITTEN PERMISSION OF JORDAN ARCHITECTS, INC. "COPYRIGHT" HEAD OF EACH SHEET INDICATES OWNERSHIP.

JOB NUMBER: 22-913  
SCALE: 1/8"=1'-0"  
DATE: 12/19/2023

## A.8



JORDAN  
 ARCHITECTS  
 131 CALLE IGLESIA, SUITE 100  
 SAN CLEMENTE, CA 92672  
 949.388.8090



THIS DRAWING AND ITS CONTENTS ARE INSTRUMENTS OF SERVICE AND ARE THE COPYRIGHTED PROPERTY OF JORDAN ARCHITECTS, INC. THE USE IS EXPRESSLY INTENDED FOR THE PROJECT NOTED ABOVE AND MAY NOT BE REUSED OR REPRODUCED IN WHOLE OR IN PART WITHOUT THE WRITTEN PERMISSION OF JORDAN ARCHITECTS, INC. "COPYRIGHT"

JOB NUMBER: 22-913  
SCALE: 1/8"=1'-0"  
DATE: 12/19/2023

3  
" A.9



AN

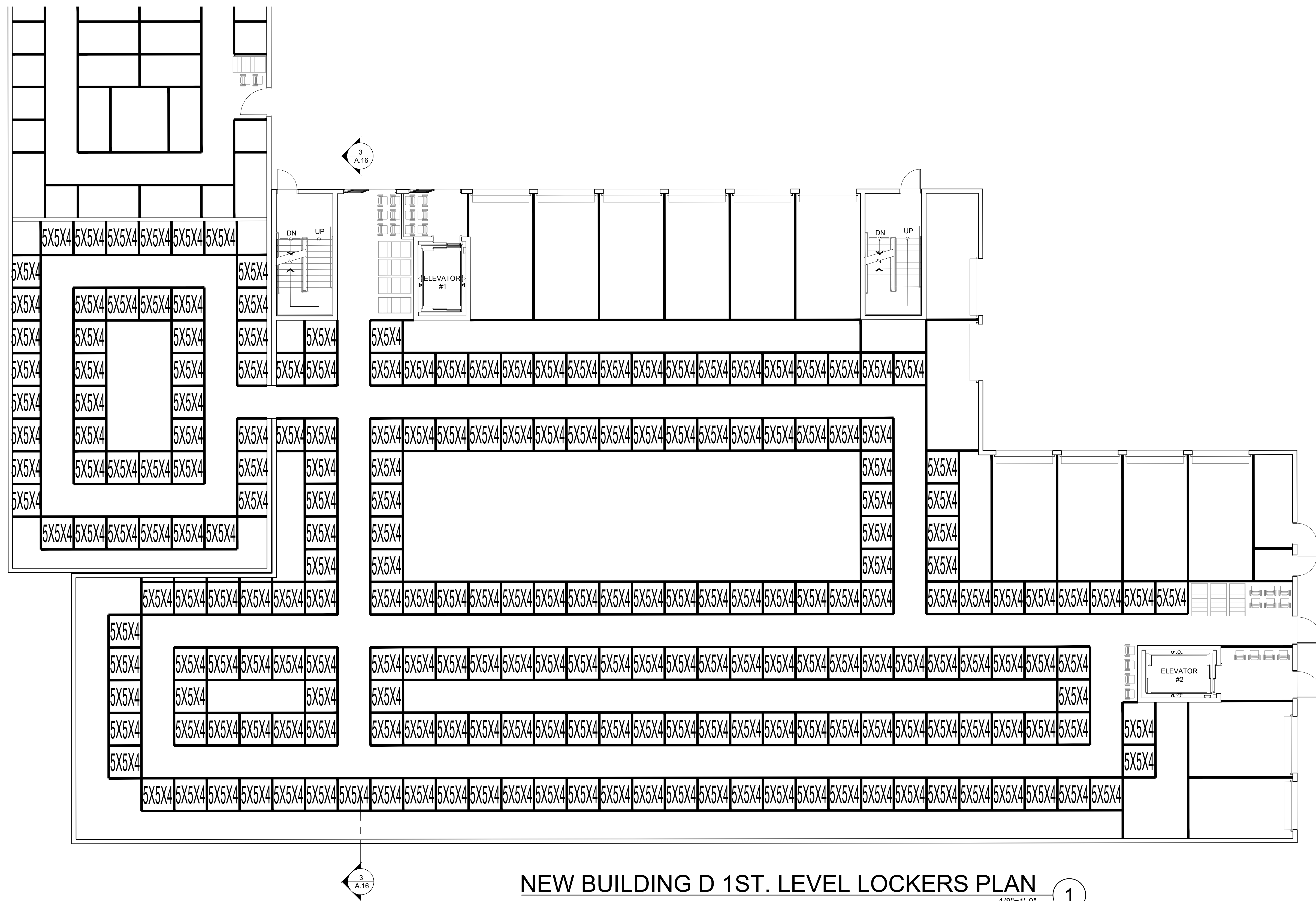
MBER: 22-913  
1/8"=1'-0"  
12/19/2023

A.9

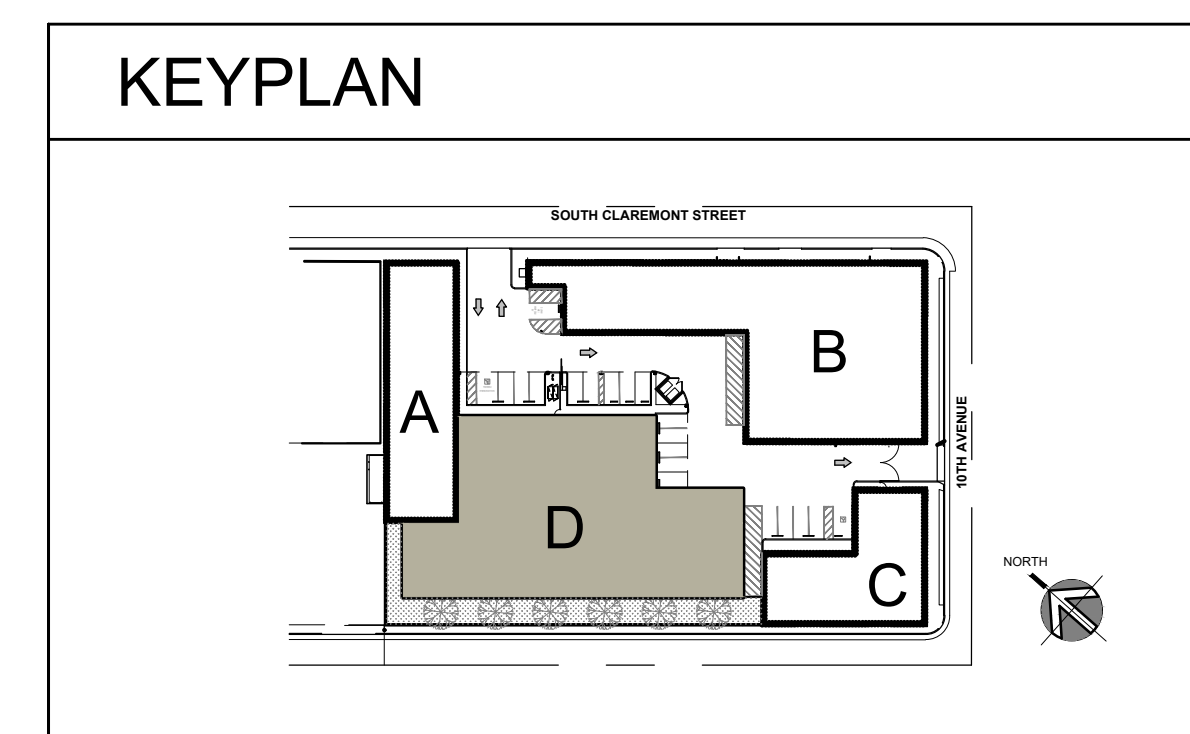
ja

JORDAN  
ARCHITECTS

131 CALLE IGLESIA, SUITE 100  
SAN CLEMENTE, CA 92672  
949.388.8090



NEW BUILDING D 1ST. LEVEL LOCKERS PLAN 1  
1/8"=1'-0"



STALEY POINT CAPITAL  
SAFE POINT STORAGE SAN MATEO  
SAN MATEO, CA

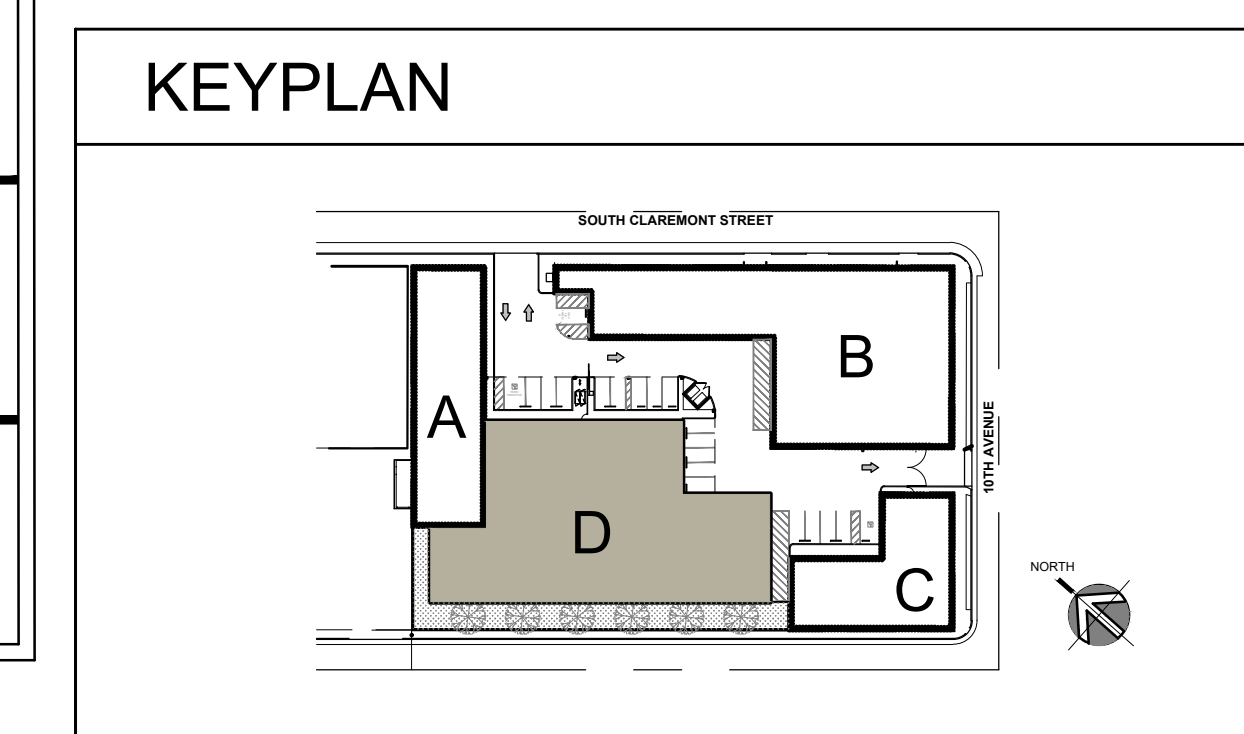
NEW BLDG. D FIRST LEVEL LOCKERS PLAN

THIS DRAWING AND ITS CONTENTS ARE INSTRUMENTS OF SERVICE AND ARE THE COPYRIGHTED PROPERTY OF JORDAN ARCHITECTS, INC. THE USE IS EXPRESSLY INTENDED FOR THE PROJECT NOTED ABOVE AND MAY NOT BE REUSED OR REPRODUCED IN WHOLE OR IN PART WITHOUT THE WRITTEN PERMISSION OF JORDAN ARCHITECTS, INC. "COPYRIGHT" YEAR OF FIRST PUBLICATION 2022 JORDAN ARCHITECTS, INC.

JOB NUMBER: 22-913  
SCALE: 1/8"=1'-0"  
DATE: 12/19/2023

A.10





THIS DRAWING AND ITS CONTENTS ARE INSTRUMENTS OF SERVICE AND ARE THE COPYRIGHTED PROPERTY OF JORDAN ARCHITECTS, INC. THE USE IS EXPRESSLY INTENDED FOR THE PROJECT NOTED ABOVE AND MAY NOT BE REUSED OR REPRODUCED IN WHOLE OR IN PART WITHOUT THE WRITTEN PERMISSION OF JORDAN ARCHITECTS, INC. "COPYRIGHT" HEAD OF SERVICE PROJECTS AND JORDAN ARCHITECTS, INC. 1991

JOB NUMBER: 22-913  
SCALE: 1/8"=1'-0"  
DATE: 12/19/2023

### A.11

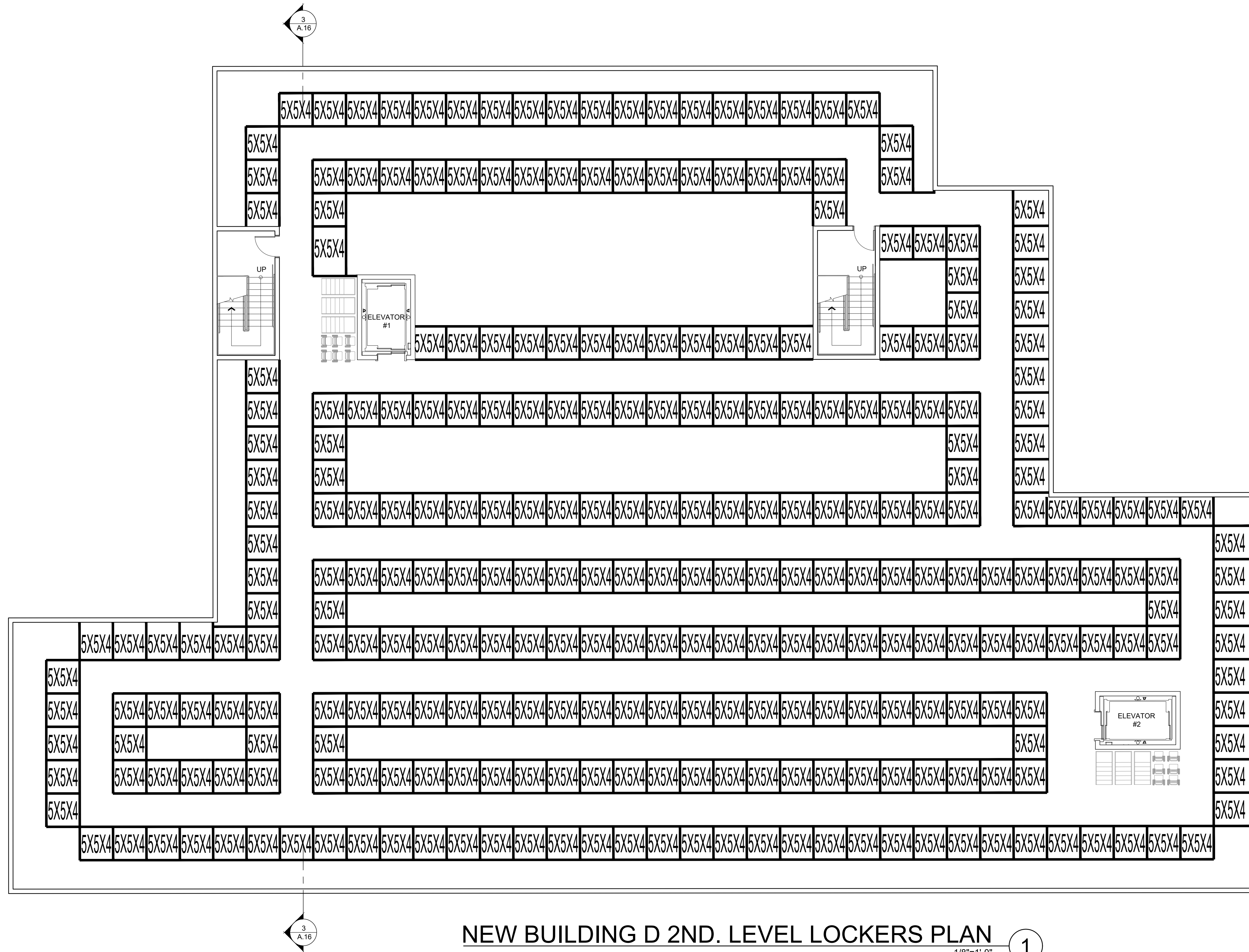


AN

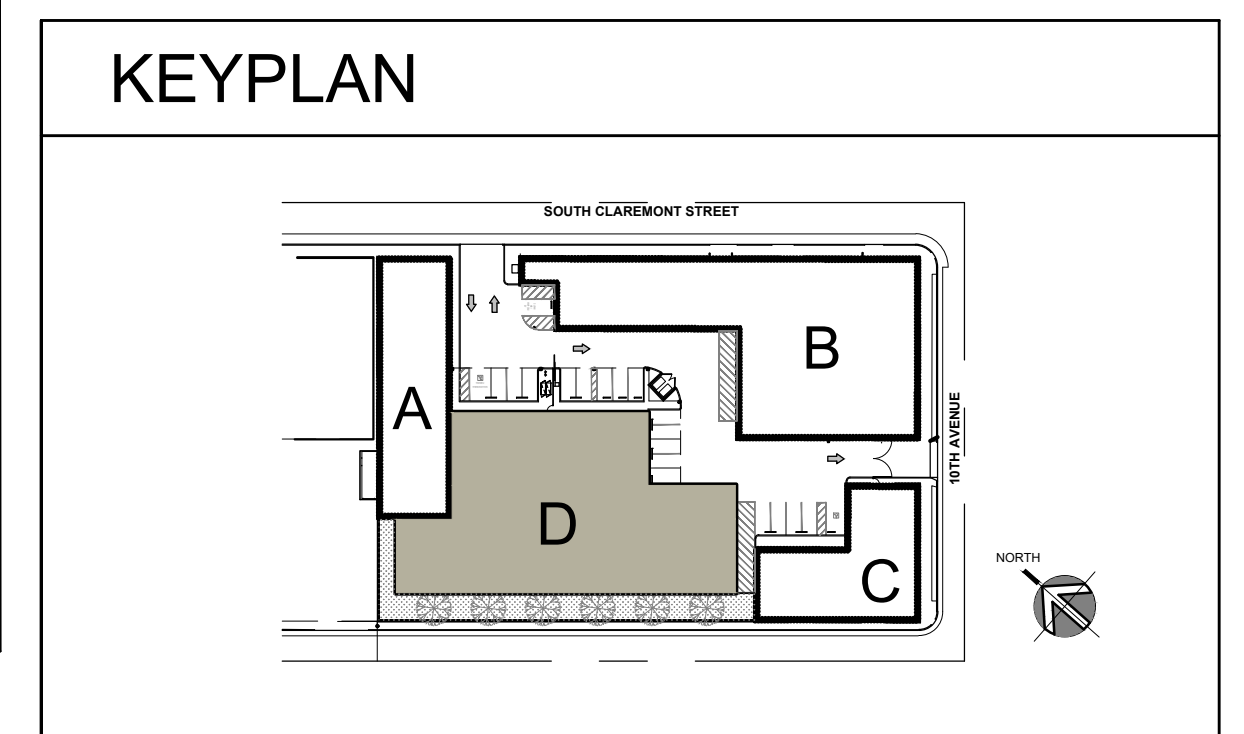
NUMBER: 22-913  
1/8"=1'-0"  
12/19/2023

A.11

JORDAN  
ARCHITECTS  
131 CALLE IGLESIA, SUITE 100  
SAN CLEMENTE, CA 92672  
949.388.8090



NEW BUILDING D 2ND. LEVEL LOCKERS PLAN 1  
1/8"=1'-0"



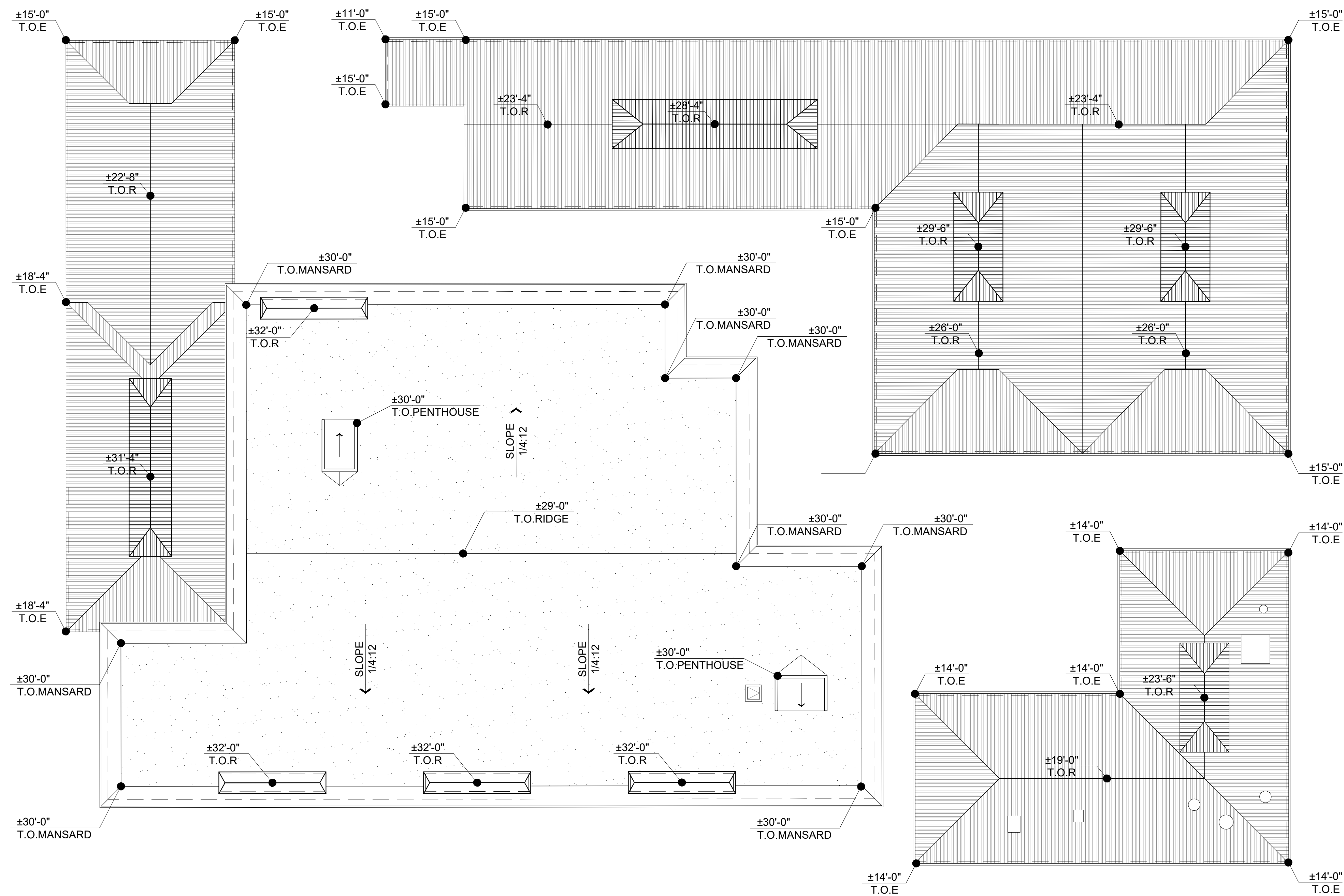
# STALEY POINT CAPITAL SAFE POINT STORAGE SAN MATEO NEW BLDG. D 2ND. LEVEL LOCKERS PLAN SAN MATEO, CA

THIS DRAWING AND ITS CONTENTS ARE INSTRUMENTS OF SERVICE AND ARE THE COPYRIGHTED PROPERTY OF JORDAN ARCHITECTS, INC. THE USE IS EXPRESSLY INTENDED FOR THE PROJECT NOTED ABOVE AND MAY NOT BE REUSED OR REPRODUCED IN WHOLE OR IN PART WITHOUT THE WRITTEN PERMISSION OF JORDAN ARCHITECTS, INC. "COPYRIGHT" YEAR OF FIRST PUBLICATION 2022 JORDAN ARCHITECTS, INC.

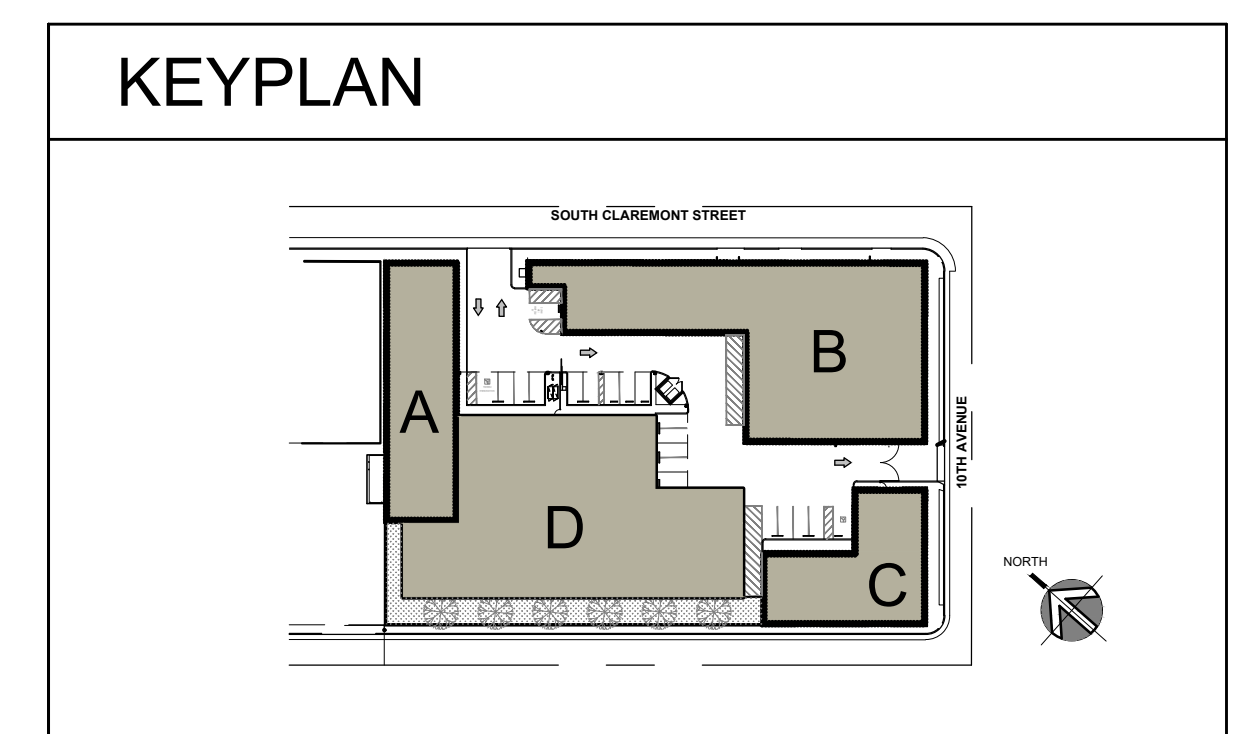
JOB NUMBER: 22-913  
SCALE: 1/8"=1'-0"  
DATE: 12/19/2023

A.11





GENERAL ROOF PLAN 1  
1/16"=1'-0"



STALEY POINT CAPITAL  
SAFE POINT STORAGE SAN MATEO  
SAN MATEO, CA

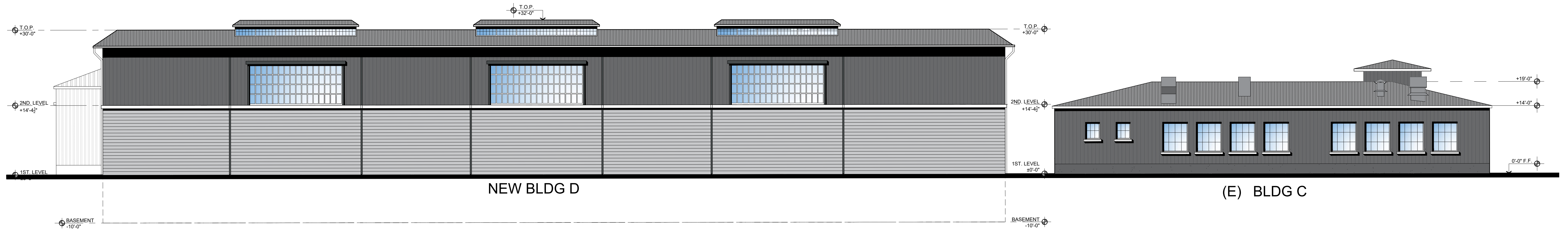
GENERAL ROOF PLAN

THIS DRAWING AND ITS CONTENTS ARE INSTRUMENTS OF SERVICE AND ARE THE COPYRIGHTED PROPERTY OF JORDAN ARCHITECTS, INC. THE USE IS EXPRESSLY INTENDED FOR THE PROJECT NOTED ABOVE AND MAY NOT BE REUSED OR REPRODUCED IN WHOLE OR IN PART WITHOUT THE WRITTEN PERMISSION OF JORDAN ARCHITECTS, INC. "COPYRIGHT" YEAR OF FIRST PUBLICATION 2022 JORDAN ARCHITECTS, INC.

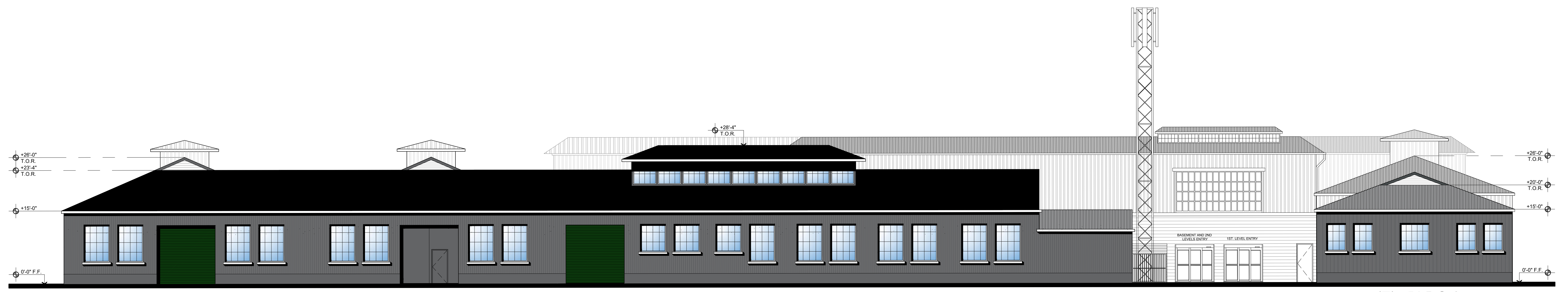
JOB NUMBER: 22-913  
SCALE: 1/16"=1'-0"  
DATE: 12/19/2023

A.13

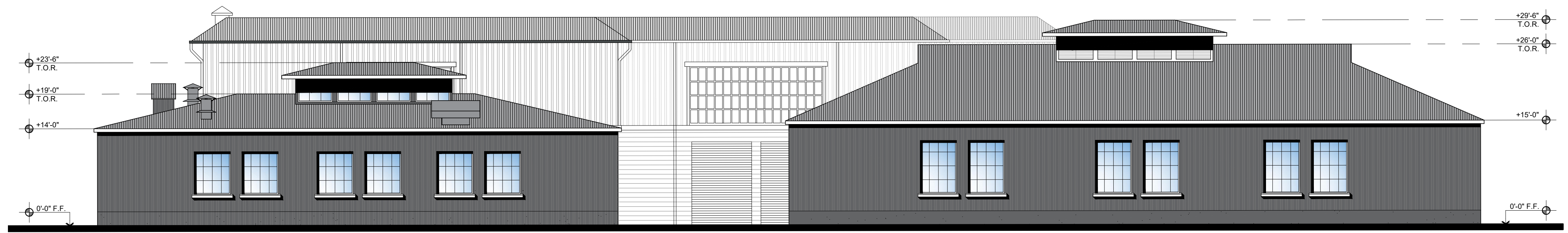
*ja*  
**JORDAN**  
ARCHITECTS  
131 CALLE IGLESIA, SUITE 100  
SAN CLEMENTE, CA 92672  
949.388.8090



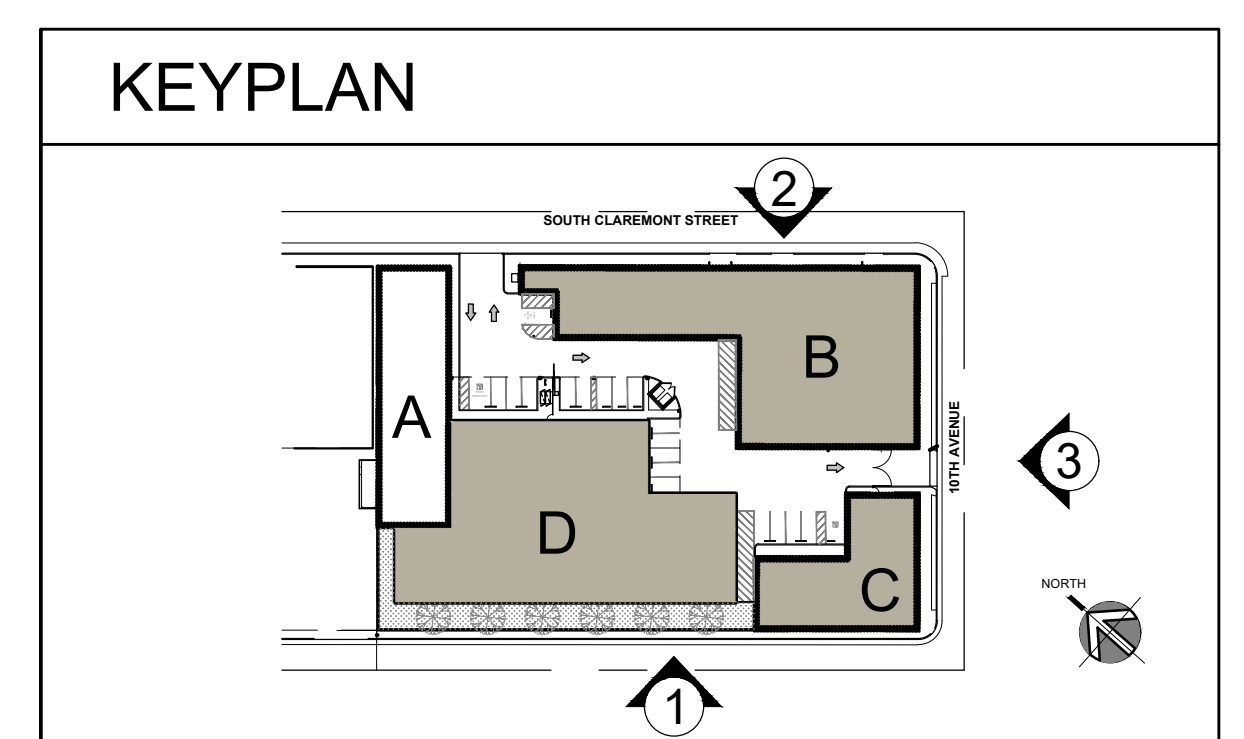
WEST ELEVATION 1  
1/10"=1'-0"



(E) BLDG B  
SOUTH CLAREMONT STREET ELEVATION 2  
1/10"=1'-0"



(E) BLDG C (E) BLDG B  
10TH AVENUE ELEVATION 3  
1/10"=1'-0"



STALEY POINT CAPITAL  
SAFE POINT STORAGE SAN MATEO  
SAN MATEO, CA

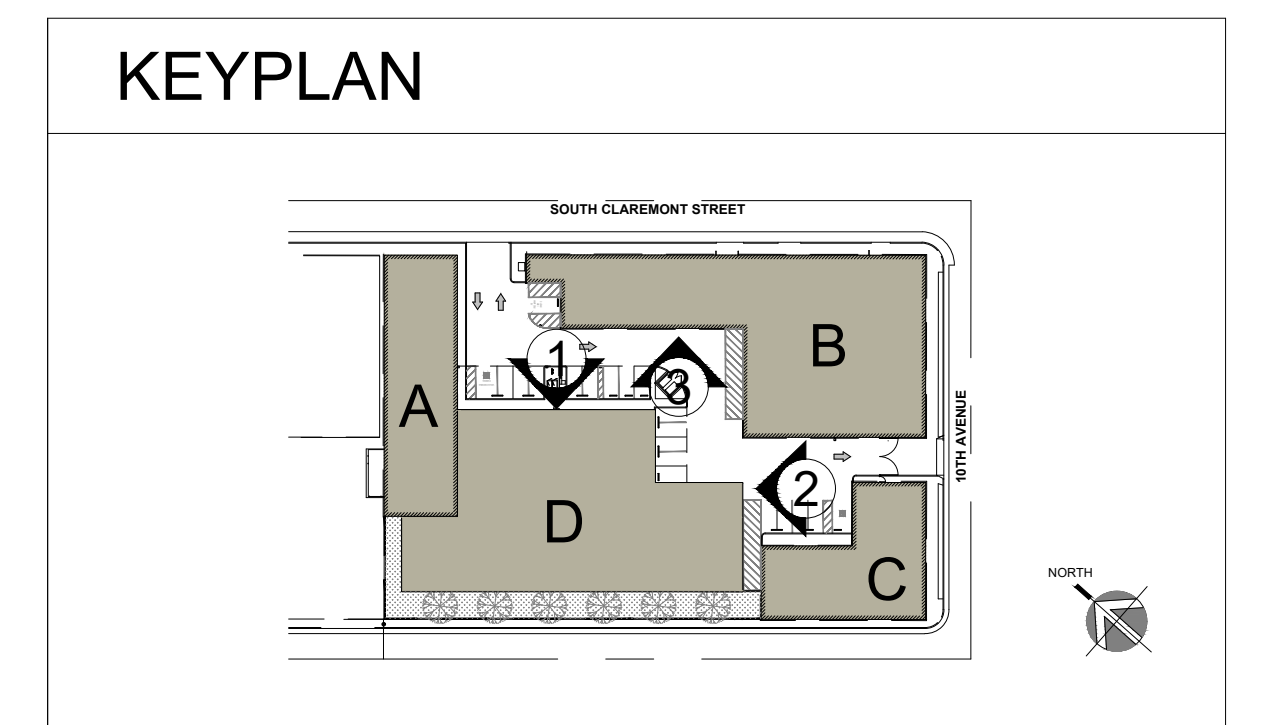
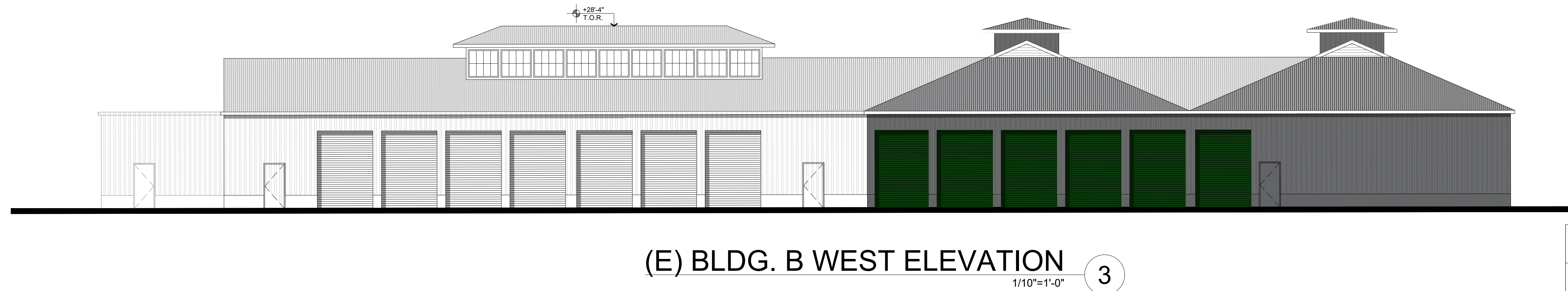
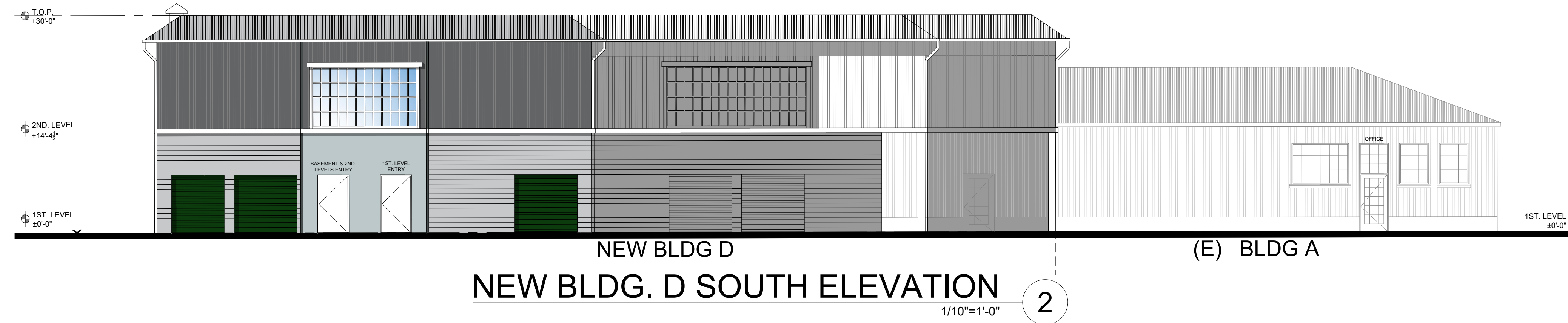
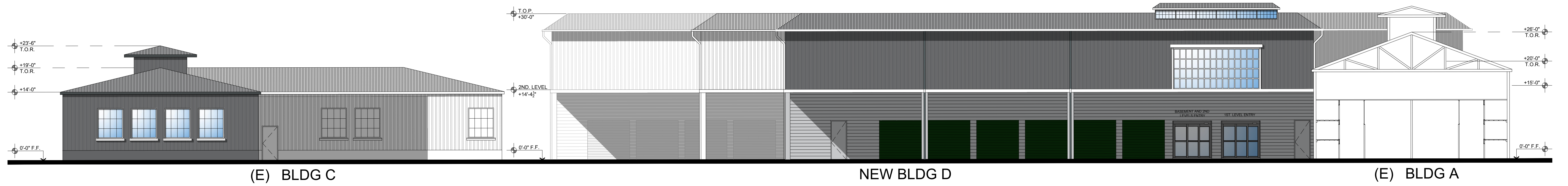
# STREETFRONT ELEVATIONS

THIS DRAWING AND ITS CONTENTS ARE INSTRUMENTS OF SERVICE AND ARE THE COPYRIGHTED PROPERTY OF JORDAN ARCHITECTS, INC. THE USE IS EXPRESSLY INTENDED FOR THE PROJECT NOTED ABOVE AND MAY NOT BE REUSED OR REPRODUCED IN WHOLE OR IN PART WITHOUT THE WRITTEN PERMISSION OF JORDAN ARCHITECTS, INC. "COPYRIGHT" YEAR OF FIRST PUBLICATION 2022 JORDAN ARCHITECTS, INC.

JOB NUMBER: 22-913  
SCALE: 1/8"=1'-0"  
DATE: 01/18/2024

A.14

*ja*  
**JORDAN**  
ARCHITECTS  
131 CALLE IGLESIA, SUITE 100  
SAN CLEMENTE, CA 92672  
949.388.8090



STALEY POINT CAPITAL  
SAFE POINT STORAGE SAN MATEO  
SAN MATEO, CA

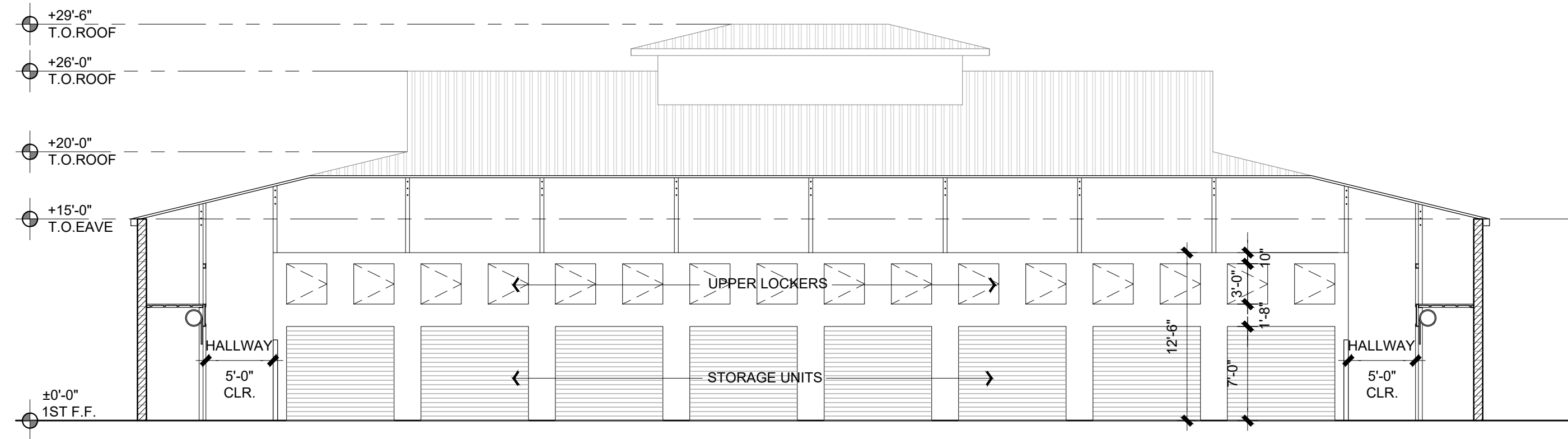
INTERIOR ELEVATIONS

THIS DRAWING AND ITS CONTENTS ARE INSTRUMENTS OF SERVICE AND ARE THE COPYRIGHTED PROPERTY OF JORDAN ARCHITECTS, INC. THE USE IS EXPRESSLY INTENDED FOR THE PROJECT NOTED ABOVE AND MAY NOT BE REUSED OR REPRODUCED IN WHOLE OR IN PART WITHOUT THE WRITTEN PERMISSION OF JORDAN ARCHITECTS, INC. "COPYRIGHT" YEAR OF FIRST PUBLICATION 2022 JORDAN ARCHITECTS, INC.

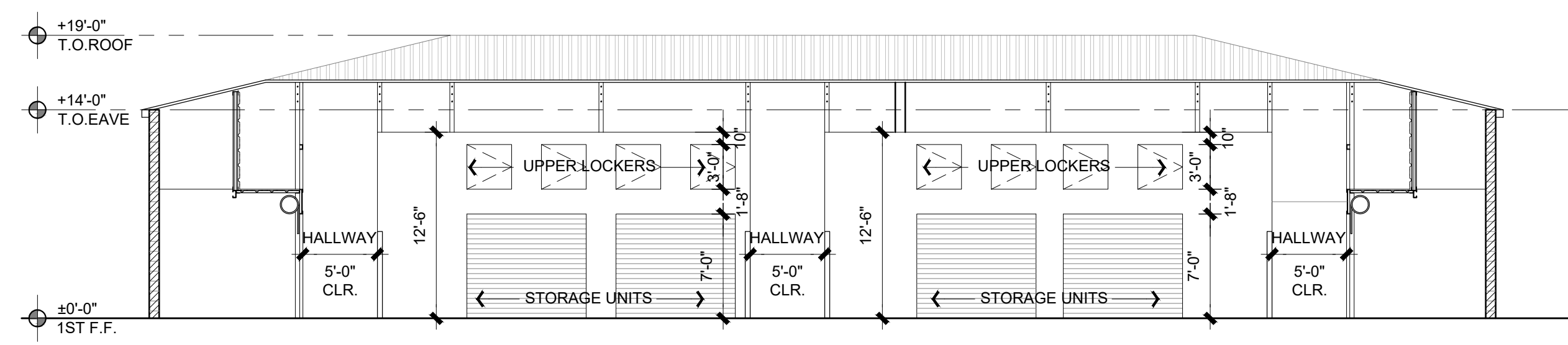
JOB NUMBER: 22-913  
SCALE: 1/8"=1'-0"  
DATE: 12/27/2023

A.15

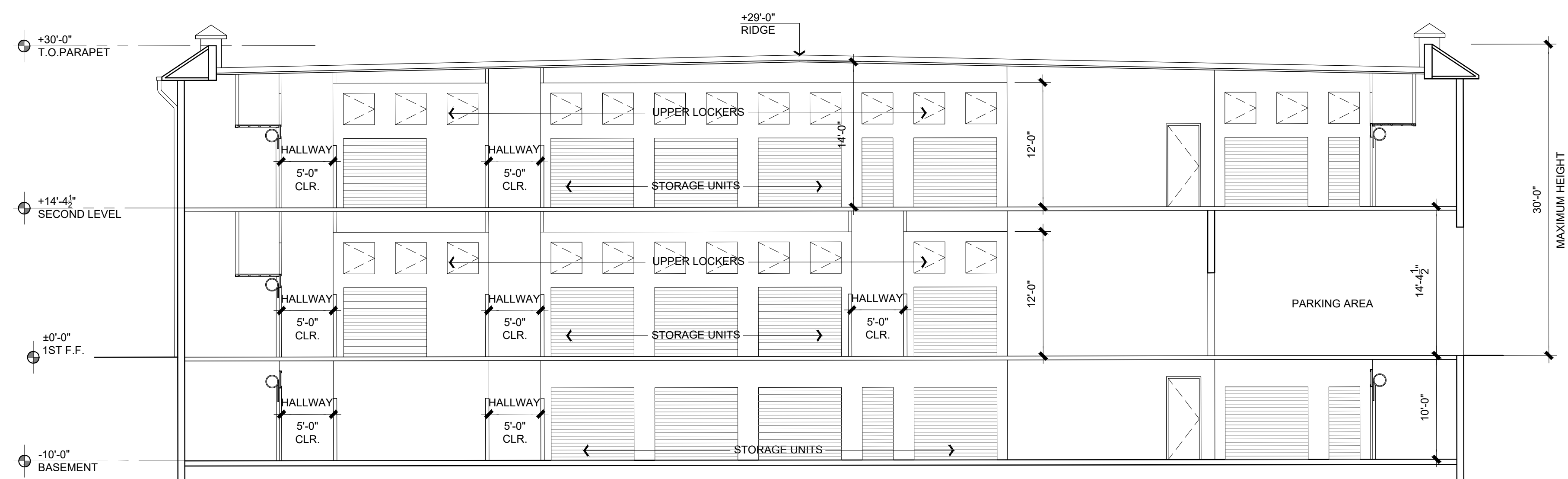




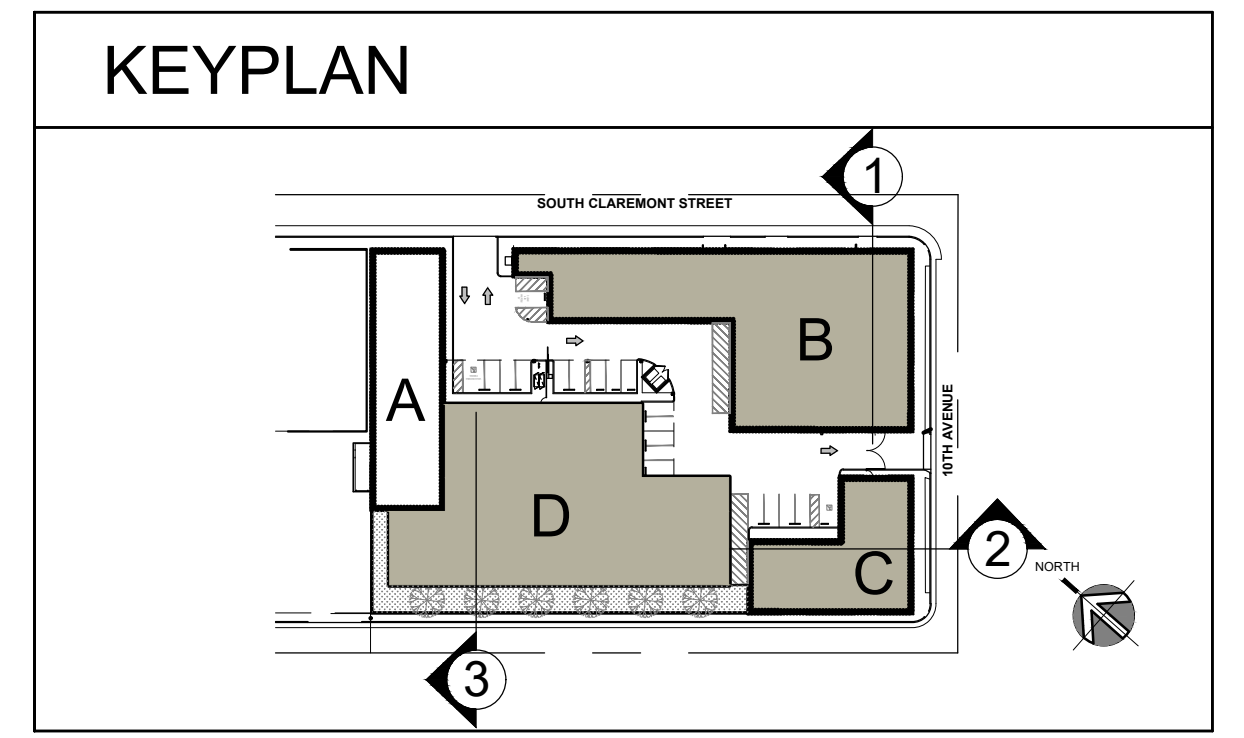
EXISTING BUILDING B SECTION 1  
1/8"=1'-0"



EXISTING BUILDING C SECTION 2  
1/8"=1'-0"



NEW BUILDING D SECTION 3  
1/8"=1'-0"



STALEY POINT CAPITAL  
SAFE POINT STORAGE SAN MATEO  
SAN MATEO, CA

# BUILDINGS SECTIONS

THIS DRAWING AND ITS CONTENTS ARE INSTRUMENTS OF SERVICE AND ARE THE COPYRIGHTED PROPERTY OF JORDAN ARCHITECTS, INC. THE USE IS EXPRESSLY INTENDED FOR THE PROJECT NOTED ABOVE AND MAY NOT BE REUSED OR REPRODUCED IN WHOLE OR IN PART WITHOUT THE WRITTEN PERMISSION OF JORDAN ARCHITECTS, INC. "COPYRIGHT" YEAR OF FIRST PUBLICATION 2022 JORDAN ARCHITECTS, INC.

JOB NUMBER: 22-913  
SCALE: 1/8"=1'-0"  
DATE: 12/19/2023

A.16

**JORDAN**  
ARCHITECTS  
131 CALLE IGLESIA, SUITE 100  
SAN CLEMENTE, CA 92672  
949.388.8090



STALEY POINT CAPITAL  
SAFE POINT STORAGE SAN MATEO PRELIMINARY RENDERING  
SAN MATEO, CA

THIS DRAWING AND ITS CONTENTS ARE INSTRUMENTS OF  
SERVICE AND ARE THE COPYRIGHTED PROPERTY OF JORDAN  
ARCHITECTS, INC. THE USE IS EXPRESSLY INTENDED FOR THE  
PROJECT NOTED ABOVE AND MAY NOT BE REUSED OR  
REPRODUCED IN WHOLE OR IN PART WITHOUT THE WRITTEN  
PERMISSION OF JORDAN ARCHITECTS, INC. "COPYRIGHT"  
YEAR OF FIRST PUBLICATION 2022 JORDAN ARCHITECTS, INC.

JOB NUMBER: 22-913  
SCALE: N.I.S.  
DATE: 01/18/2024

A.17

*ja*  
JORDAN  
ARCHITECTS  
131 CALLE IGLESIA, SUITE 100  
SAN CLEMENTE, CA 92672  
949.388.8090



STALEY POINT CAPITAL  
 SAFE POINT STORAGE SAN MATEO PRELIMINARY RENDERING  
 SAN MATEO, CA

THIS DRAWING AND ITS CONTENTS ARE INSTRUMENTS OF SERVICE AND ARE THE COPYRIGHTED PROPERTY OF JORDAN ARCHITECTS, INC. THE USE IS EXPRESSLY INTENDED FOR THE PROJECT NOTED ABOVE AND MAY NOT BE REUSED OR REPRODUCED IN WHOLE OR IN PART WITHOUT THE WRITTEN PERMISSION OF JORDAN ARCHITECTS, INC. "COPYRIGHT" YEAR OF FIRST PUBLICATION 2022 JORDAN ARCHITECTS, INC.

JOB NUMBER: 22-913  
 SCALE: N.I.S.  
 DATE: 01/18/2024

A.18



JORDAN  
 ARCHITECTS  
 131 CALLE IGLESIA, SUITE 100  
 SAN CLEMENTE, CA 92672  
 949.388.8090



STALEY POINT CAPITAL  
 SAFE POINT STORAGE SAN MATEO PRELIMINARY RENDERING  
 SAN MATEO, CA

THIS DRAWING AND ITS CONTENTS ARE INSTRUMENTS OF SERVICE AND ARE THE COPYRIGHTED PROPERTY OF JORDAN ARCHITECTS, INC. THE USE IS EXPRESSLY INTENDED FOR THE PROJECT NOTED ABOVE AND MAY NOT BE REUSED OR REPRODUCED IN WHOLE OR IN PART WITHOUT THE WRITTEN PERMISSION OF JORDAN ARCHITECTS, INC. "COPYRIGHT" YEAR OF FIRST PUBLICATION 2022 JORDAN ARCHITECTS, INC.

JOB NUMBER: 22-913  
 SCALE: N.I.S.  
 DATE: 01/18/2024

A.19



**JORDAN**  
 ARCHITECTS  
 131 CALLE IGLESIA, SUITE 100  
 SAN CLEMENTE, CA 92672  
 949.388.8090



STALEY POINT CAPITAL  
 SAFE POINT STORAGE SAN MATEO PRELIMINARY RENDERING  
 SAN MATEO, CA

THIS DRAWING AND ITS CONTENTS ARE INSTRUMENTS OF SERVICE AND ARE THE COPYRIGHTED PROPERTY OF JORDAN ARCHITECTS, INC. THE USE IS EXPRESSLY INTENDED FOR THE PROJECT NOTED ABOVE AND MAY NOT BE REUSED OR REPRODUCED IN WHOLE OR IN PART WITHOUT THE WRITTEN PERMISSION OF JORDAN ARCHITECTS, INC. "COPYRIGHT" YEAR OF FIRST PUBLICATION 2022 JORDAN ARCHITECTS, INC.

JOB NUMBER: 22-913  
 SCALE: N.I.S.  
 DATE: 01/18/2024

A.20

*ja*  
 JORDAN  
 ARCHITECTS  
 131 CALLE IGLESIA, SUITE 100  
 SAN CLEMENTE, CA 92672  
 949.388.8090



STALEY POINT CAPITAL  
SAFE POINT STORAGE SAN MATEO PRELIMINARY RENDERING  
SAN MATEO, CA

THIS DRAWING AND ITS CONTENTS ARE INSTRUMENTS OF SERVICE AND ARE THE COPYRIGHTED PROPERTY OF JORDAN ARCHITECTS, INC. THE USE IS EXPRESSLY INTENDED FOR THE PROJECT NOTED ABOVE AND MAY NOT BE REUSED OR REPRODUCED IN WHOLE OR IN PART WITHOUT THE WRITTEN PERMISSION OF JORDAN ARCHITECTS, INC. "COPYRIGHT" YEAR OF FIRST PUBLICATION 2022 JORDAN ARCHITECTS, INC.

JOB NUMBER: 22-913  
SCALE: N.I.S.  
DATE: 01/18/2024

A.21

*ja*  
JORDAN  
ARCHITECTS  
131 CALLE IGLESIA, SUITE 100  
SAN CLEMENTE, CA 92672  
949.388.8090



STALEY POINT CAPITAL  
 SAFE POINT STORAGE SAN MATEO PRELIMINARY RENDERING  
 SAN MATEO, CA

THIS DRAWING AND ITS CONTENTS ARE INSTRUMENTS OF SERVICE AND ARE THE COPYRIGHTED PROPERTY OF JORDAN ARCHITECTS, INC. THE USE IS EXPRESSLY INTENDED FOR THE PROJECT NOTED ABOVE AND MAY NOT BE REUSED OR REPRODUCED IN WHOLE OR IN PART WITHOUT THE WRITTEN PERMISSION OF JORDAN ARCHITECTS, INC. "COPYRIGHT" YEAR OF FIRST PUBLICATION 2022 JORDAN ARCHITECTS, INC.

JOB NUMBER: 22-913  
 SCALE: N.I.S.  
 DATE: 01/18/2024

A.22

*ja*  
 JORDAN  
 ARCHITECTS  
 131 CALLE IGLESIA, SUITE 100  
 SAN CLEMENTE, CA 92672  
 949.388.8090



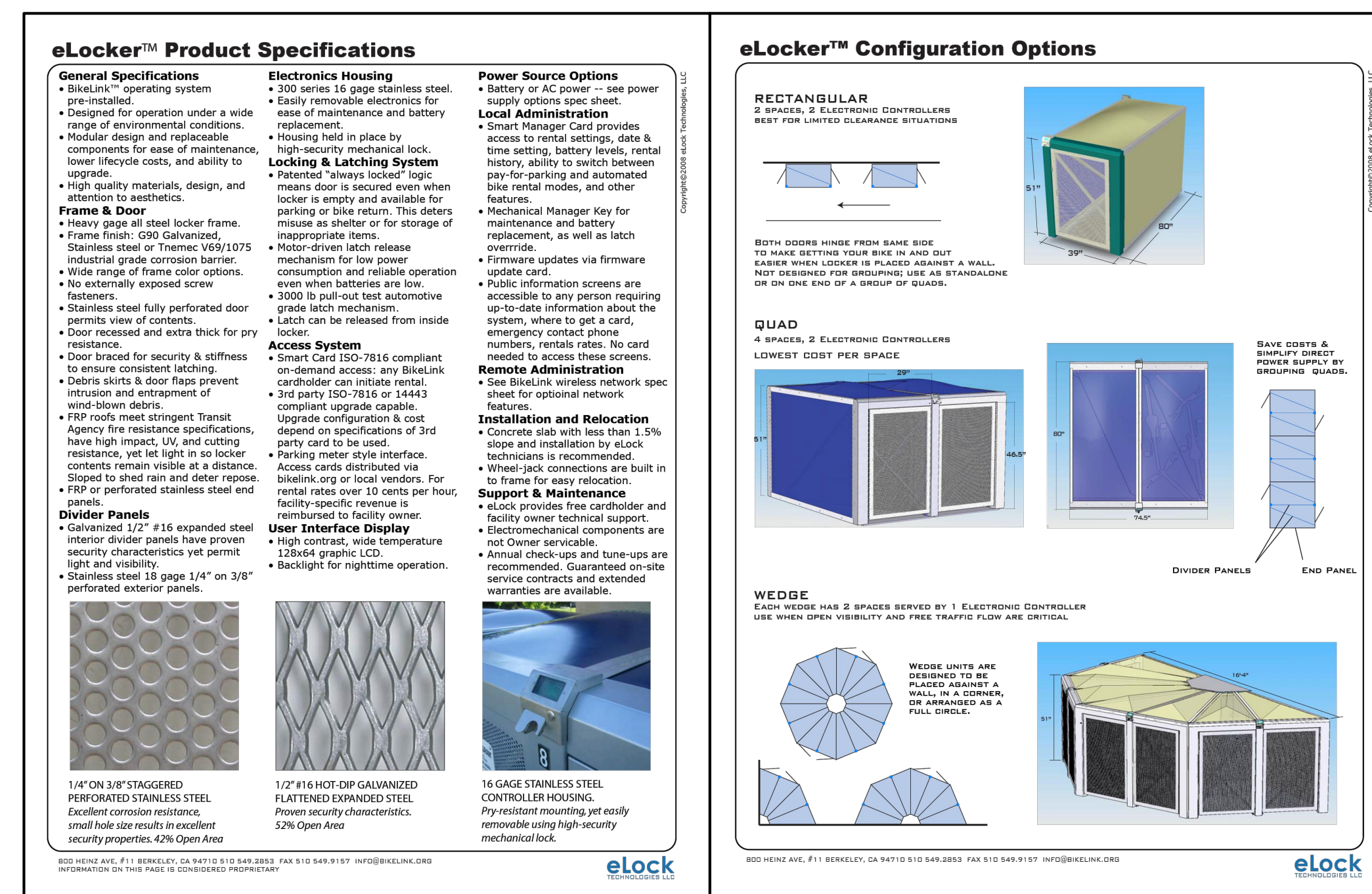
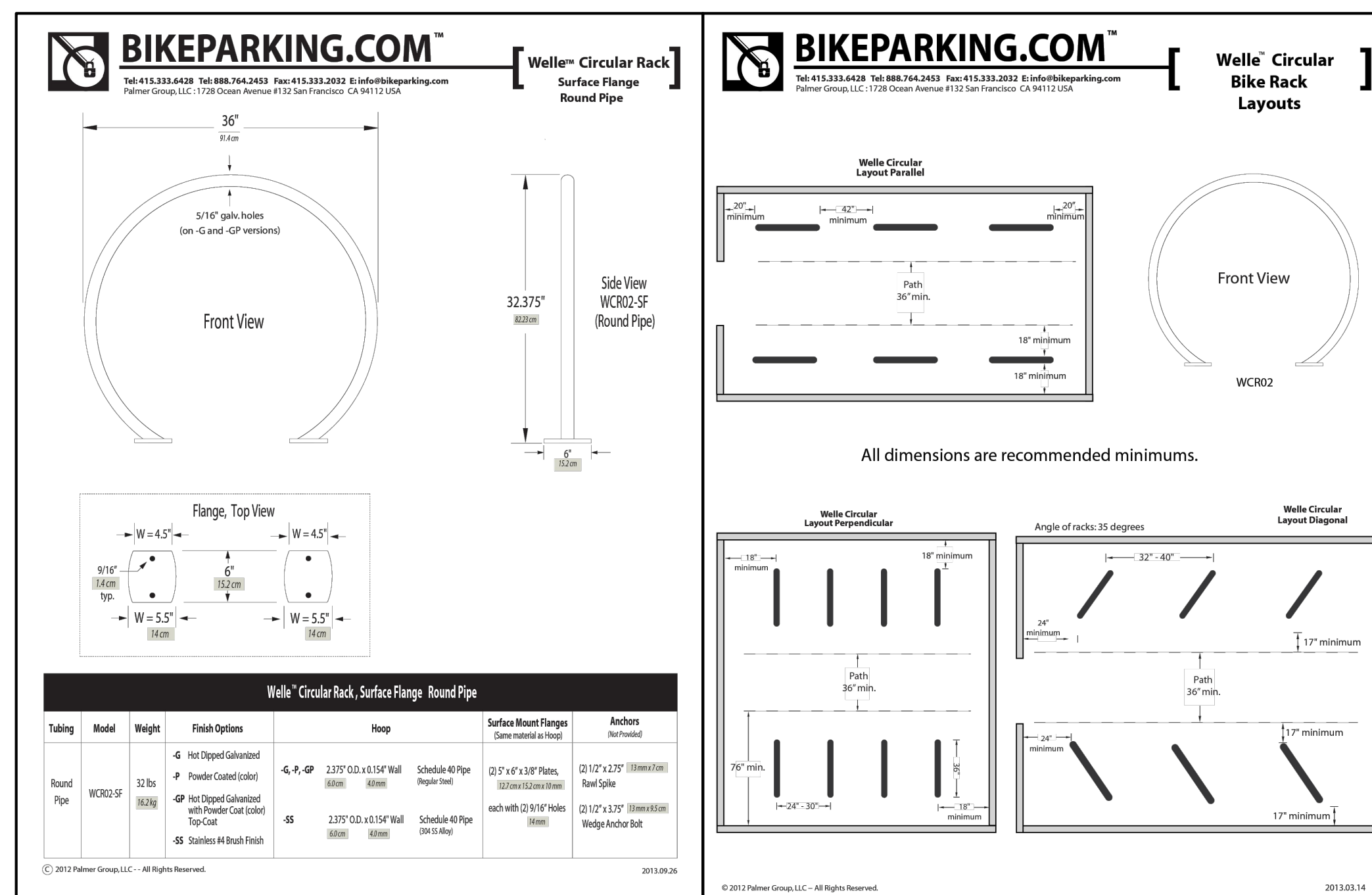
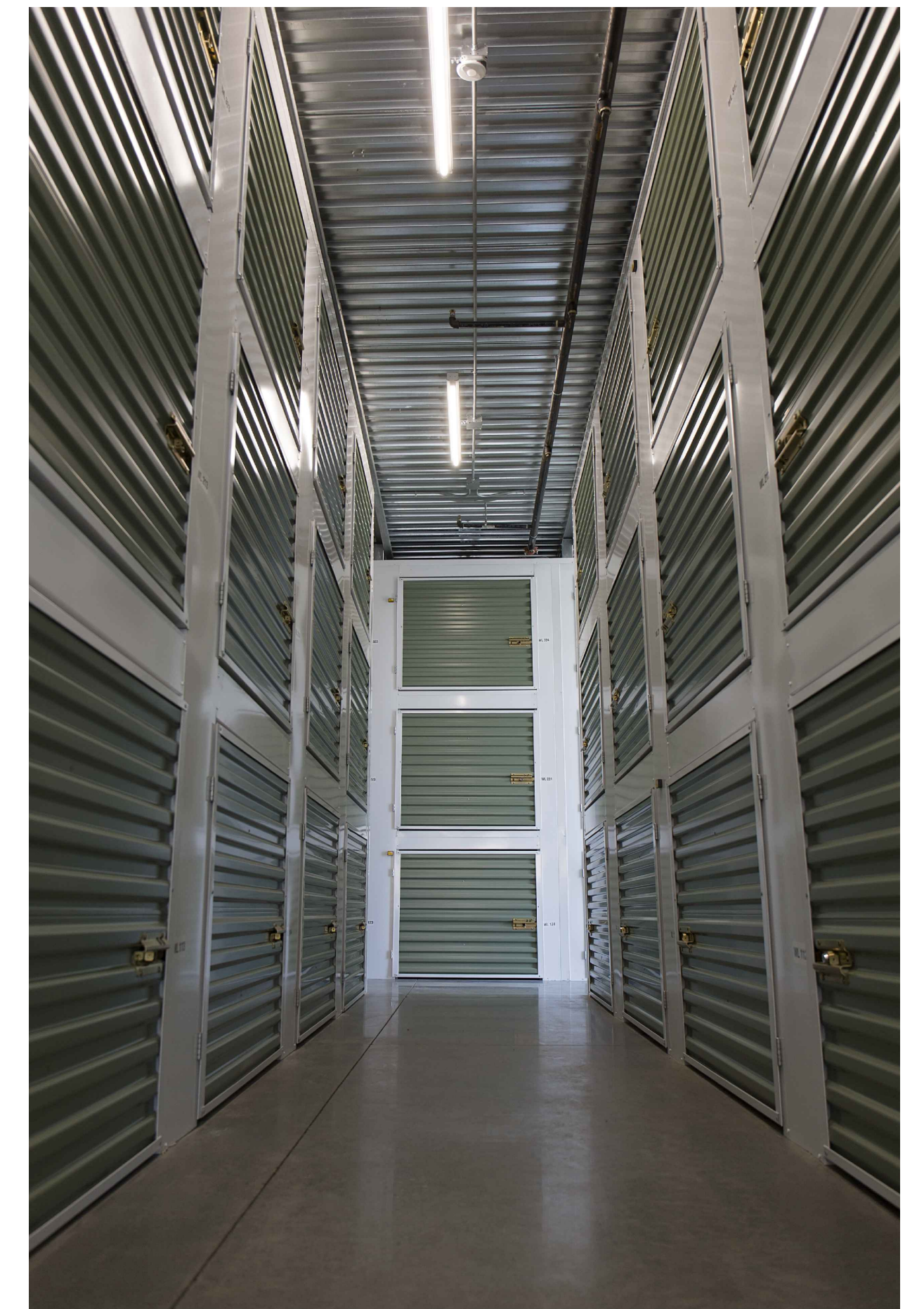
STALEY POINT CAPITAL  
 SAFE POINT STORAGE SAN MATEO PRELIMINARY RENDERING  
 SAN MATEO, CA

THIS DRAWING AND ITS CONTENTS ARE INSTRUMENTS OF SERVICE AND ARE THE COPYRIGHTED PROPERTY OF JORDAN ARCHITECTS, INC. THE USE IS EXPRESSLY INTENDED FOR THE PROJECT NOTED ABOVE AND MAY NOT BE REUSED OR REPRODUCED IN WHOLE OR IN PART WITHOUT THE WRITTEN PERMISSION OF JORDAN ARCHITECTS, INC. "COPYRIGHT" YEAR OF FIRST PUBLICATION 2022 JORDAN ARCHITECTS, INC.

JOB NUMBER: 22-913  
 SCALE: N.I.S.  
 DATE: 01/18/2024

A.23

*ja*  
 JORDAN  
 ARCHITECTS  
 131 CALLE IGLESIA, SUITE 100  
 SAN CLEMENTE, CA 92672  
 949.388.8090



STALEY POINT CAPITAL  
SAFE POINT STORAGE SAN MATEO  

---

SAN MATEO, CA

LONG TERM BIKE LOCKER 5

REFERENCE IMAGES



DESIGN

NUMBER: 22-913

**ja**  
JORDAN  
ARCHITECTS  
131 CALLE IGLESIA, SUITE 100  
SAN CLEMENTE, CA 92672  
949.388.8090

THIS DRAWING AND ITS CONTENTS ARE INSTRUMENTS OF SERVICE AND ARE THE COPYRIGHTED PROPERTY OF JORDAN ARCHITECTS, INC. THE USE IS EXPRESSLY INTENDED FOR THE PROJECT NOTED ABOVE AND MAY NOT BE REUSED OR REPRODUCED IN WHOLE OR IN PART WITHOUT THE WRITTEN PERMISSION OF JORDAN ARCHITECTS, INC. "COPYRIGHT" YEAR OF FIRST PUBLICATION 2022 JORDAN ARCHITECTS, INC.

JOB NUMBER: 22-913  
SCALE: N.I.S.  
DATE: 01/18/2024