

# 1<sup>st</sup> & B | Public Art

Potential Art & Artist Concepts

January 8, 2024

Civic Arts Commission Study Session

# Project Overview

- Located on the corner of 1<sup>st</sup> Avenue and South B Street, directly across from Cal Train station
- 41k SF, 4-Story commercial office building with ground floor retail
- Mass Timber structural system with brick exterior
- Estimated value for art = \$135,000





# 1<sup>st</sup> & B: Proposed Art Location

**View From Cal Train Station:  
Building Façade With Art**



**View Across 1<sup>st</sup> Avenue:  
Building Façade with Art**



**Building Façade With Windows:  
if no art is placed in this location**



**Building Façade With Windows:  
If no art is placed in this location**

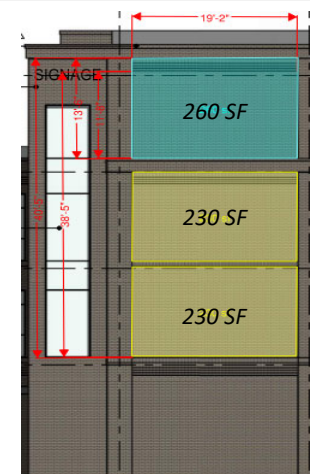
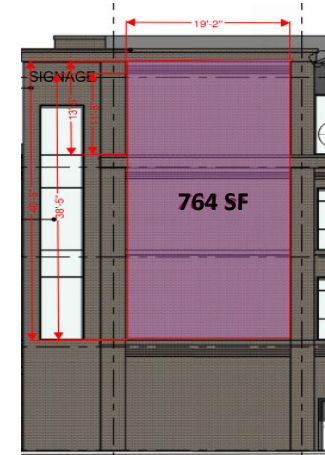


# Proposed Art Area(s)

Dimensions:  
19'2" W x 40'5" H



*This area is mostly obstructed by the existing CMU wall along Transit Way. Recommend starting art higher on the building to avoid vandalism / damage.*



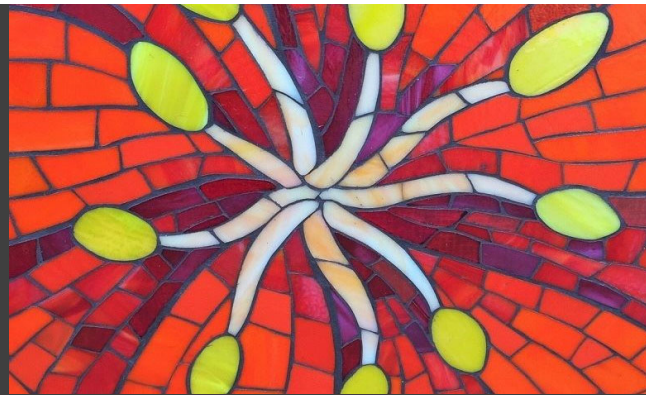


# Concept #1: Mosaic Tile

---



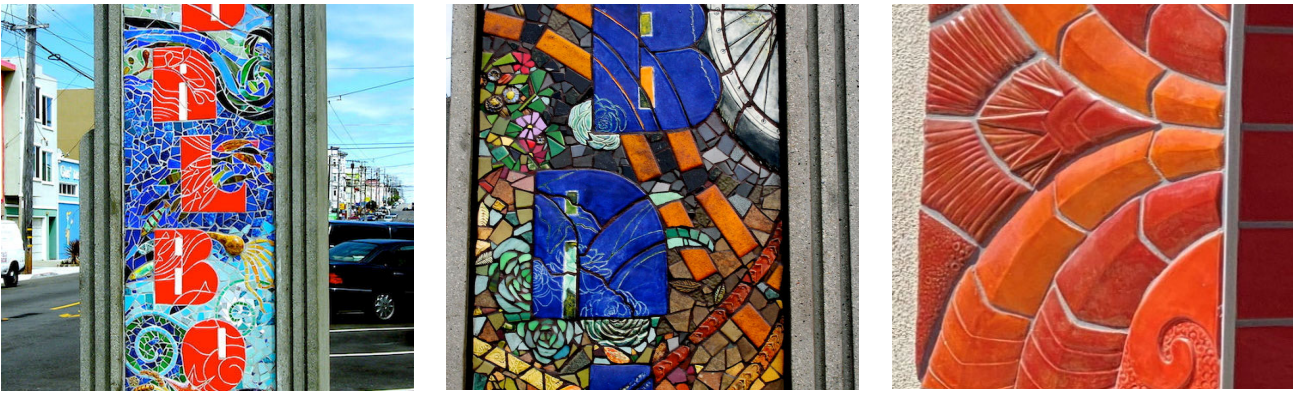




## RACHEL RODI

- Mosaic tile as main medium
- Literal expressions of nature
- Based in the San Francisco Bay Area
- Has created more than 70 art installations throughout the United States and abroad.





# COLETTE CRUTCHER

- Range of media: painting and drawing, collage, assemblage, paper mache, concrete, ceramic and mosaics.
- Patterns, abstract, lettering
- Draws inspiration from the great artistic traditions of many cultures



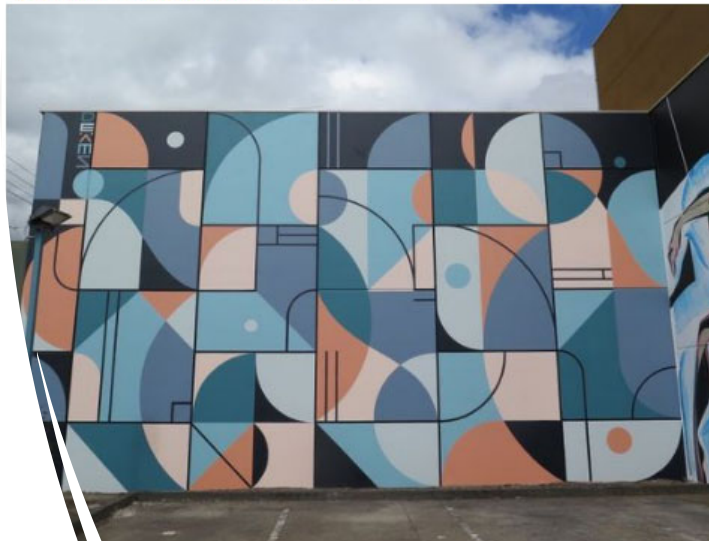
# Concept #2: Mural

---



<https://monacaron.com/community-resilience/taking-root>

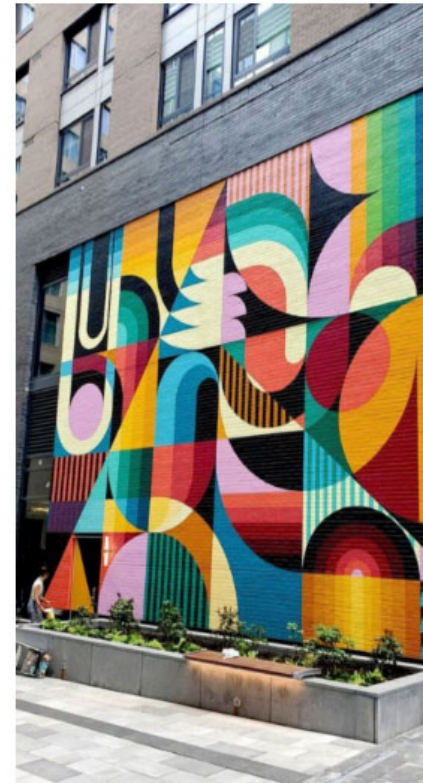
[DEAMS + SHIDA BRUNSWICK](#)



[ansunshine.com/deams-shida-brunswick/](https://ansunshine.com/deams-shida-brunswick/)



[XYZ Axis Mural by Matt W. Moore](#)







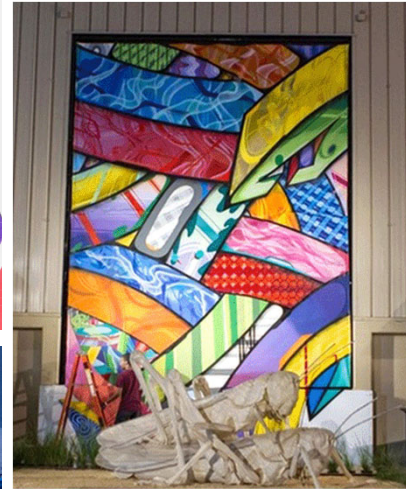
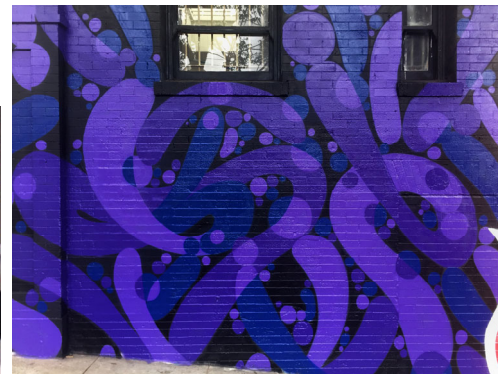
# NICOLE MUELLER

- Her paintings are vibrant and lyrical, filled with rhythmic gestures and pockets of deep space.
- Driven by process, her abstract works are built up through layers of transparent washes, sweeping brushstrokes, or spray painted in atmospheric hazes.
- She fills the canvases with color edge-to-edge, teeming with portals and nebulous forms suspended in a state of flux.
- Painting on glass could be an option for 1<sup>st</sup> & B



# APEXER

- APEXER (b. 1978, San Francisco, CA), also known as Ricardo Richey, is a street artist who creates colorful abstract patterns through the use of spray paint.
- Part of the Gestalt Collective that engages in collaborative murals in San Francisco.
- His work has been shown extensively both in the Bay Area and abroad.





# Concept #3: Sculpture

---

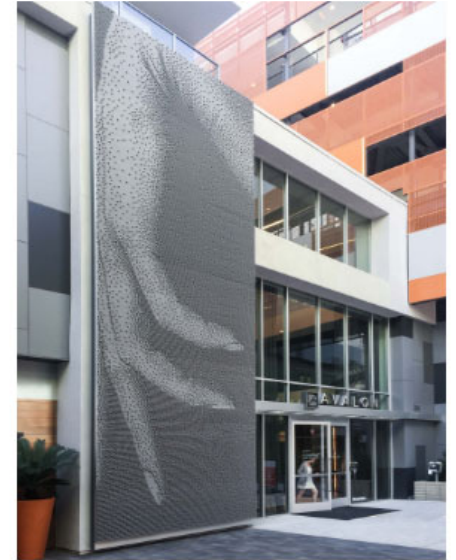


<https://christianmoeller.com/DOTS>

[Jeremy Holmes](#)



[www.holmesarts.com/](http://www.holmesarts.com/)



<https://christianmoeller.com/Close-Up>



# JEREMY HOLMES

- 3D Sculpture
- Wood materiality to celebrate CLT structure and connection to nature / sustainability
- Could be cast in metal for exterior application

