

SAFE POINT STORAGE SAN MATEO

922 S. CLAREMONT STREET
SAN MATEO , CA 94402



DIRECTORY	SITE DATA					VICINITY MAP		INDEX	
<div>OWNER STALEY POINT CAPITAL 11150 SANTA MONICA BLVD. SUITE 700 LOS ANGELES, CA. 90025 TELEPHONE: (310) 929-8097 CONTACT: MIKE CHANG EMAIL: mike@staleypoint.com</div> <div>ARCHITECT JORDAN ARCHITECTS, INC. 131 CALLE IGLESIA, SUITE 100, SAN CLEMENTE, CA 92673 TELEPHONE: (949) 388-8090 FACSIMILE: (949) 388-8290 CONTACT: MARCELO QUIROGA E-MAIL: mquiroga@jordanarchitects.com</div>	BASIS OF DESIGN		BUILDING AREA TABULATIONS (Square Feet)				<div>A.1 COVER SHEET</div> <div>A.2 EXISTING BUILDINGS</div> <div>A.3 PRELIMINARY SITE PLAN</div> <div>A.4 BUILDING A. BASEMENT FLOOR PLAN</div> <div>A.5 BUILDING A. 1ST. LEVEL FLOOR PLAN</div> <div>A.6 BUILDING A. 1ST. LEVEL LOCKER PLAN</div> <div>A.7 BUILDING A. 2ND. LEVEL FLOOR PLAN</div> <div>A.8 BUILDING B. 1ST. LEVEL FLOOR PLAN</div> <div>A.9 BUILDING B. 1ST. LEVEL LOCKER PLAN</div> <div>A.10 BUILDING C. 1ST. FLOOR & LOCKER PLAN</div> <div>A.11 GENERAL ROOF PLAN</div> <div>A.12 EXISTING BUILDINGS ELEVATIONS</div> <div>A.13 EXISTING BUILDINGS ELEVATIONS</div> <div>A.14 BUILDING A. ELEVATIONS</div> <div>A.15 BUILDING A. ELEVATIONS</div> <div>A.16 EXISTING BUILDINGS SECTIONS</div> <div>A.17 PRELIMINARY RENDERING</div> <div>A.18 REFERENCE IMAGES</div>		
	ZONING	REQUIRED	PROVIDED	BUILDING	SELF STORAGE	WINE STORAGE		MANAGERS OFFICE	TOTAL
	OVERLAY	N/A		BUILDING A - BASEMENT	20,120				20,120
	STRUCTURE HEIGHT	30' MAX	30'-0"	BUILDING A - 1ST. LEVEL	17,254	1,746		1,120	20,120
	LOT COVERAGE	NA	66% (39,532 SF)	BUILDING A - 2ND. LEVEL	20,120				20,120
	FAR	1.0 MAX(±59,746 SF)	99 (59,653 SF) MINUS BASEMENT	(E) BUILDING B	14,357				14,357
	SETBACKS			(E) BUILDING C	5,056				5,056
	FRONT	15 FT.	COMPLIES	TOTAL GROSS AREA				76,907	
	SIDE	10 FT.	COMPLIES	BUILDING CONSTRUCTION TYPE: IIB BUILDINGS ARE EQUIPPED WITH AUTOMATIC FIRE SPRINKLER SYSTEM IN ACCORDANCE WITH NFPA 13				1,746	
	PARKING - MINI STORAGE REQUIREMENTS		SCOPE OF WORK					1,120	79,773
1 SPACE PER 4K +1 PER MANAGERS OFFICE	1 SPACE PER 4K +1 PER MANAGERS OFFICE = 21 SPACES	STANDARD 9'X 20' 8 SPACES ACCESSIBLE 1 SPACE CLEAN AREA/VA. POOL 1 SPACE	PROPOSED MINI-STORAGE PROJECT WITH THREE (3) BUILDINGS TOTALING 79,773 SF ON A 59,746 SF LOT. TWO (2) EXISTING SINGLE-STORY BUILDINGS TOTALING 19,413 SF ARE TO BE RETAINED AND REHABILITATED. ONE (1) NEW TWO-STORY BUILDING WITH ONE LEVEL OF BASEMENT TO BE CONSTRUCTED TOTALING 60,360 SF.						
OFF-STREET LOADING PER SAN MATEO MUNICIPAL CODE 27.64.310-380	TWO 10' X 50' LOADING SPACES	TWO 10' X 50' LOADING SPACES							
BICYCLE PARKING: SHORT TERM 1 SPACE PER 5,000 S.F. LONG TERM 1 PER 20,000 S.F. (SAN MATEO MUNICIPAL CODE 27.64.262)	SHORT TERM: 16 SPACES LONG TERM: 4 SPACES	SHORT TERM: 16 SPACES LONG TERM: 4 SPACES							

STALEY POINT CAPITAL
SAFE POINT STORAGE SAN MATEO
SAN MATEO, CA

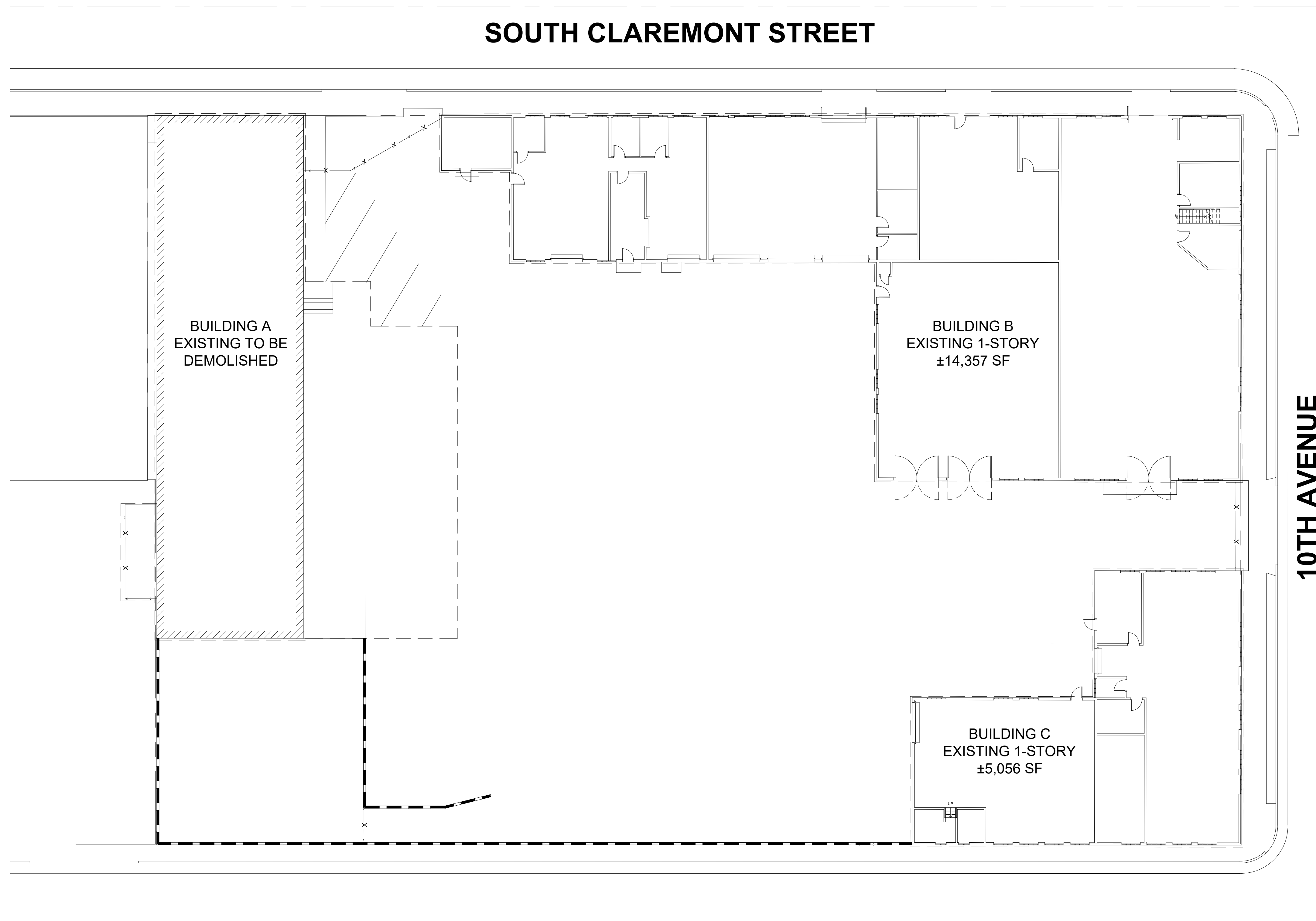
COVER SHEET

THIS DRAWING AND ITS CONTENTS ARE INSTRUMENTS OF SERVICE AND ARE THE COPYRIGHTED PROPERTY OF JORDAN ARCHITECTS, INC. THE USE IS EXPRESSLY INTENDED FOR THE PROJECT NOTED ABOVE AND MAY NOT BE REUSED OR REPRODUCED IN WHOLE OR IN PART WITHOUT THE WRITTEN PERMISSION OF JORDAN ARCHITECTS, INC. "COPYRIGHT" YEAR OF FIRST PUBLICATION 2022 JORDAN ARCHITECTS, INC.

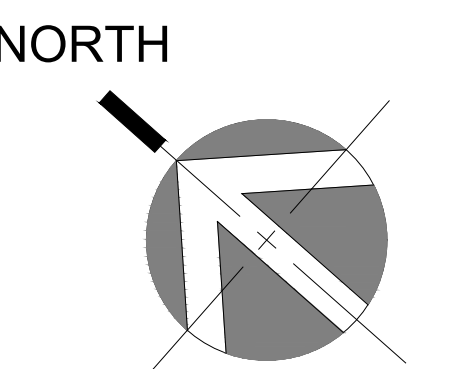
JOB NUMBER: 22-913
SCALE: NONE
DATE: 07/12/2023

A.1





EXISTING BUILDINGS SITE PLAN 1
1/16"=1'-0"



STALEY POINT CAPITAL
SAFE POINT STORAGE SAN MATEO
SAN MATEO, CA

EXISTING BUILDINGS

THIS DRAWING AND ITS CONTENTS ARE INSTRUMENTS OF SERVICE AND ARE THE COPYRIGHTED PROPERTY OF JORDAN ARCHITECTS, INC. THE USE IS EXPRESSLY INTENDED FOR THE PROJECT NOTED ABOVE AND MAY NOT BE REUSED OR REPRODUCED IN WHOLE OR IN PART WITHOUT THE WRITTEN PERMISSION OF JORDAN ARCHITECTS, INC. "COPYRIGHT" YEAR OF FIRST PUBLICATION 2022 JORDAN ARCHITECTS, INC.

JOB NUMBER: 22-913
SCALE: 1"=16'-0"
DATE: 07/12/2023

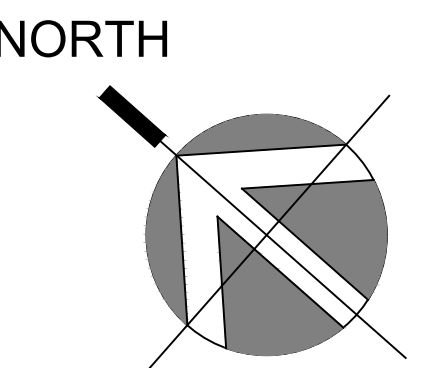
A.2

ja
**JORDAN
ARCHITECTS**
131 CALLE IGLESIA, SUITE 100
SAN CLEMENTE, CA 92672
949.388.8090

[illegible]

BUILDINGS ARE EQUIPPED WITH AUTOMATIC FIRE SPRINKLER SYSTEM IN ACCORDANCE WITH NFPA 13.

BUILDINGS ARE EQUIPPED WITH AUTOMATIC FIRE SPRINKLER SYSTEM IN ACCORDANCE WITH NFPA 13.



PRELIMINARY SITE PLAN

A.3



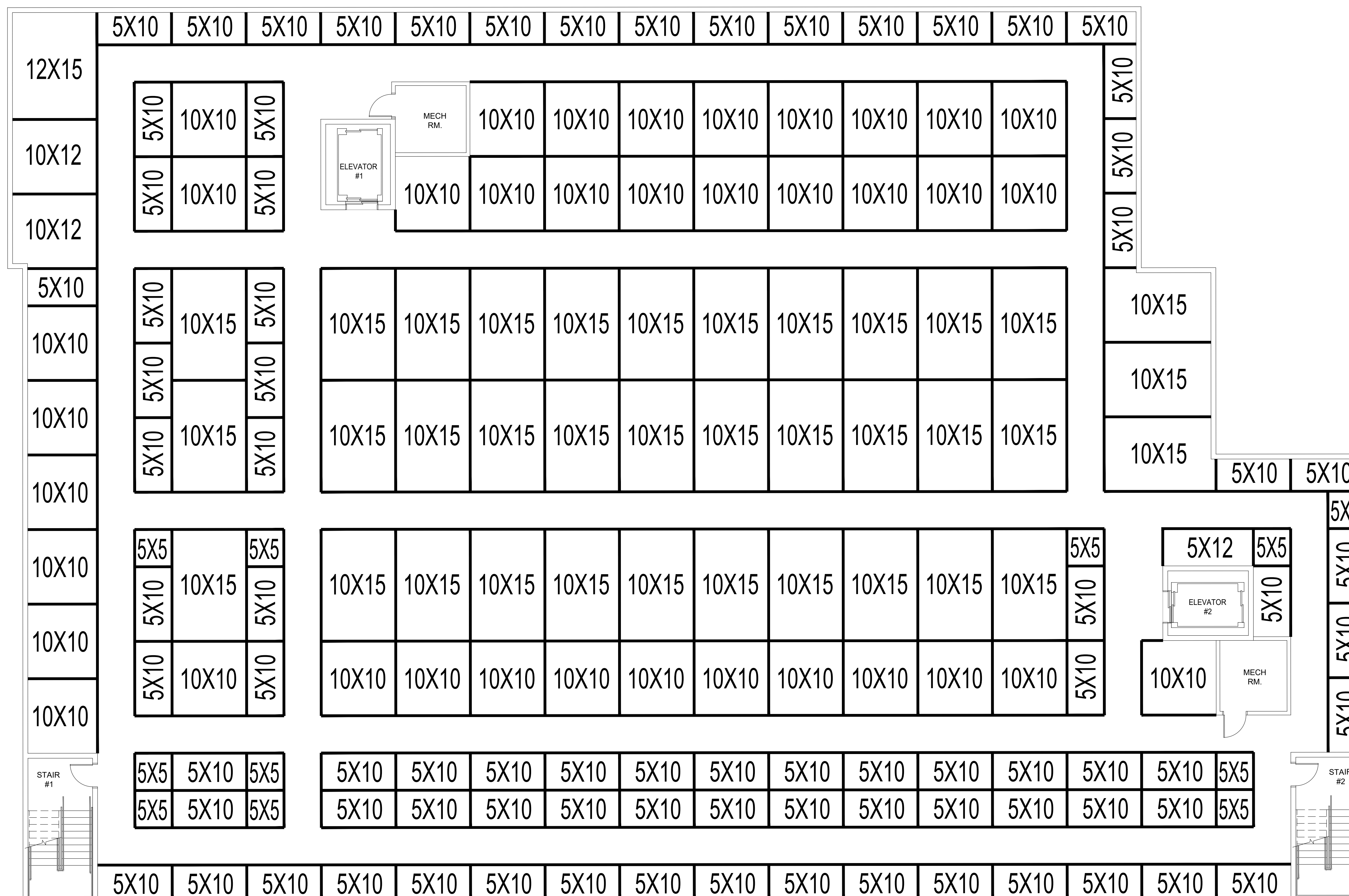
AN

NUMBER: 22-913
1"=16'-0"
07/12/2023

A.3

JORDAN
ARCHITECTS
131 CALLE IGLESIA, SUITE 100
SAN CLEMENTE, CA 92672
949.388.8090

THIS DRAWING AND ITS CONTENTS ARE INSTRUMENTS OF SERVICE AND ARE THE COPYRIGHTED PROPERTY OF JORDAN ARCHITECTS, INC. THE USE IS EXPRESSLY INTENDED FOR THE PROJECT NOTED ABOVE AND MAY NOT BE REUSED OR REPRODUCED IN WHOLE OR IN PART WITHOUT THE WRITTEN PERMISSION OF JORDAN ARCHITECTS, INC. "COPYRIGHT" YEAR OF FIRST PUBLICATION 2022, JORDAN ARCHITECTS, INC.



BUILDING A BASEMENT FLOOR PLAN 1
1/8"=1'-0"

STALEY POINT CAPITAL SAFE POINT STORAGE SAN MATEO BLDG. A BASEMENT FLOOR PLAN SAN MATEO, CA

THIS DRAWING AND ITS CONTENTS ARE INSTRUMENTS OF SERVICE AND ARE THE COPYRIGHTED PROPERTY OF JORDAN ARCHITECTS, INC. THE USE IS EXPRESSLY INTENDED FOR THE PROJECT NOTED ABOVE AND MAY NOT BE REUSED OR REPRODUCED IN WHOLE OR IN PART WITHOUT THE WRITTEN PERMISSION OF JORDAN ARCHITECTS, INC. "COPYRIGHT" YEAR OF FIRST PUBLICATION 2022 JORDAN ARCHITECTS, INC.

JOB NUMBER: 22-913
SCALE: 1/8"=1'-0"
DATE: 07/12/2023

A.4





BUILDING A 1ST. LEVEL FLOOR PLAN 1
1/8"=1'-0"

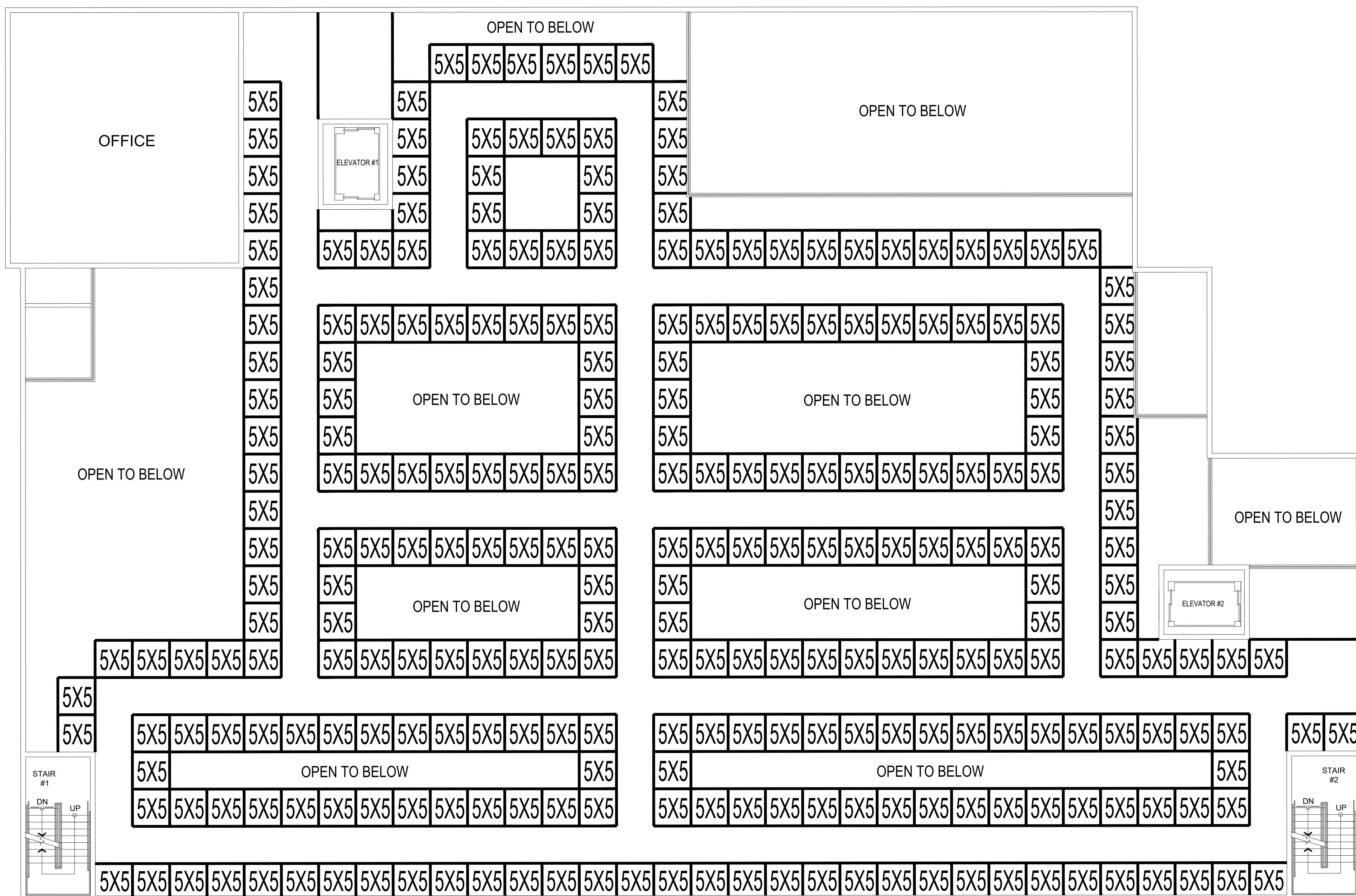
STALEY POINT CAPITAL SAFE POINT STORAGE SAN MATEO BLDG. A 1ST. LEVEL FLOOR PLAN SAN MATEO, CA

THIS DRAWING AND ITS CONTENTS ARE INSTRUMENTS OF SERVICE AND ARE THE COPYRIGHTED PROPERTY OF JORDAN ARCHITECTS, INC. THE USE IS EXPRESSLY INTENDED FOR THE PROJECT NOTED ABOVE AND MAY NOT BE REUSED OR REPRODUCED IN WHOLE OR IN PART WITHOUT THE WRITTEN PERMISSION OF JORDAN ARCHITECTS, INC. "COPYRIGHT" YEAR OF FIRST PUBLICATION 2022 JORDAN ARCHITECTS, INC.

JOB NUMBER: 22-913
SCALE: 1/8"=1'-0"
DATE: 07/12/2023

A.5

JORDAN
 ARCHITECTS
 131 CALLE IGLESIA, SUITE 100
 SAN CLEMENTE, CA 92672
 949.388.8090



BUILDING A 1ST. LEVEL LOCKER PLAN 1
 1/8"=1'-0"

STALEY POINT CAPITAL
 SAFE POINT STORAGE SAN MATEO
 SAN MATEO, CA

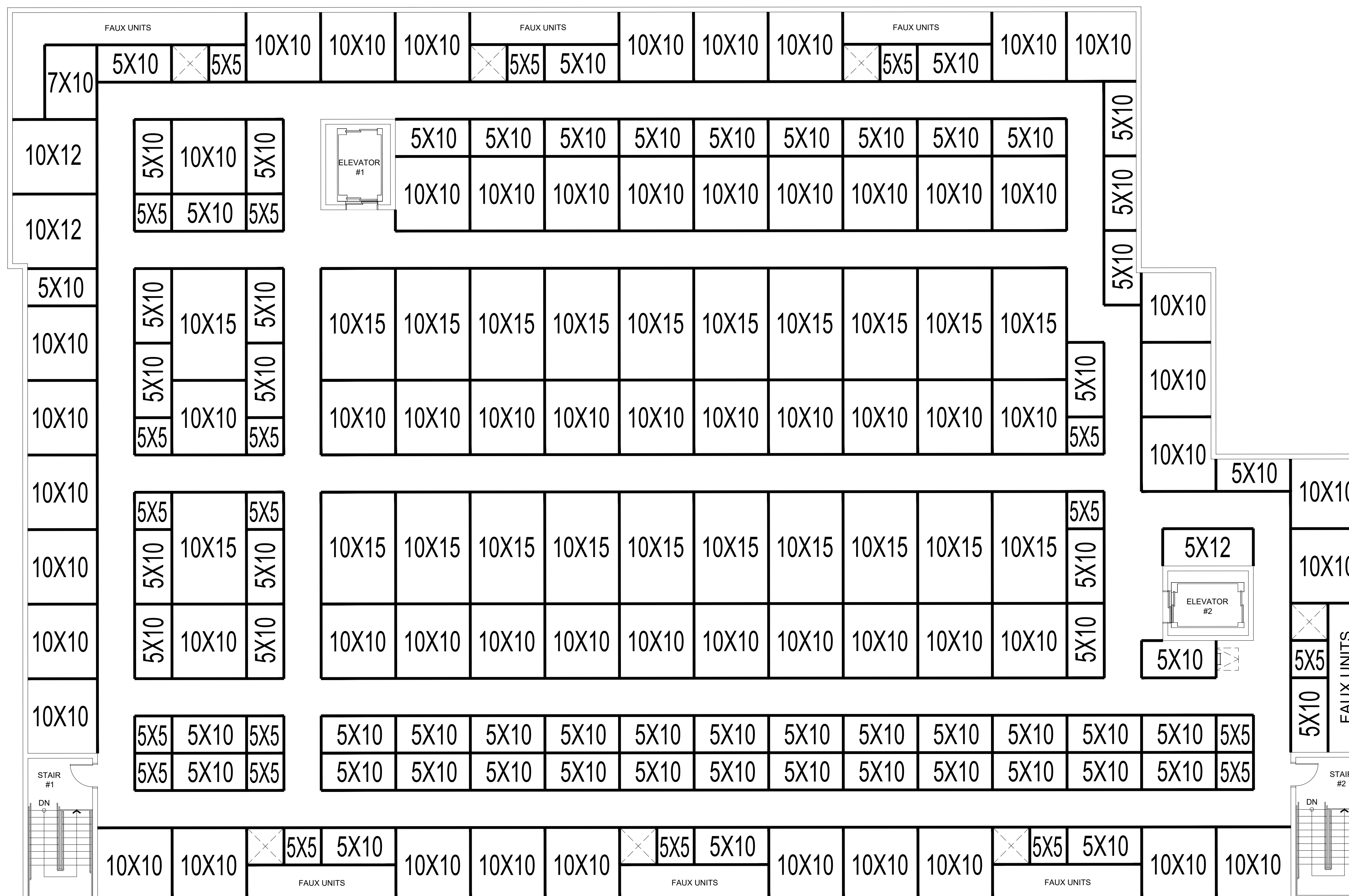
BLDG. A FIRST LEVEL LOCKER PLAN

THIS DRAWING AND ITS CONTENTS ARE INSTRUMENTS OF SERVICE AND ARE THE COPYRIGHTED PROPERTY OF JORDAN ARCHITECTS, INC. THE USE IS EXPRESSLY INTENDED FOR THE PROJECT NOTED ABOVE AND MAY NOT BE REUSED OR REPRODUCED IN WHOLE OR IN PART WITHOUT THE WRITTEN PERMISSION OF JORDAN ARCHITECTS, INC. "COPYRIGHT" YEAR OF FIRST PUBLICATION 2022 JORDAN ARCHITECTS, INC.

JOB NUMBER: 22-913
 SCALE: 1/8"=1'-0"
 DATE: 07/12/2023

A.6





BUILDING A 2ND. LEVEL FLOOR PLAN 1
1/8"=1'-0"

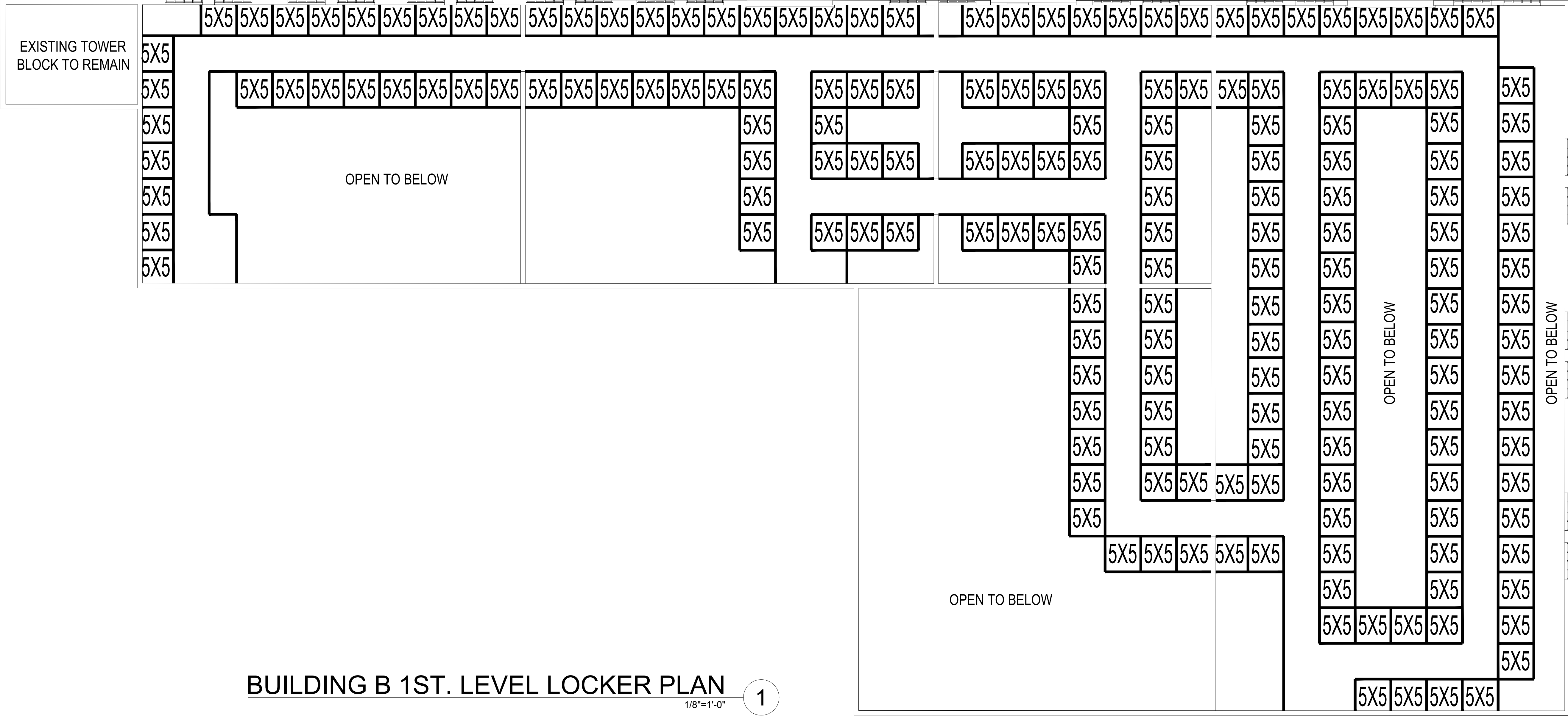
STALEY POINT CAPITAL SAFE POINT STORAGE SAN MATEO BLDG. A 2ND. LEVEL FLOOR PLAN SAN MATEO, CA

THIS DRAWING AND ITS CONTENTS ARE INSTRUMENTS OF SERVICE AND ARE THE COPYRIGHTED PROPERTY OF JORDAN ARCHITECTS, INC. THE USE IS EXPRESSLY INTENDED FOR THE PROJECT NOTED ABOVE AND MAY NOT BE REUSED OR REPRODUCED IN WHOLE OR IN PART WITHOUT THE WRITTEN PERMISSION OF JORDAN ARCHITECTS, INC. "COPYRIGHT" YEAR OF FIRST PUBLICATION 2022 JORDAN ARCHITECTS, INC.

JOB NUMBER: 22-913
SCALE: 1/8"=1'-0"
DATE: 07/12/2023

A.7

ja
JORDAN
ARCHITECTS
131 CALLE IGLESIA, SUITE 100
SAN CLEMENTE, CA 92672
949.388.8090



STALEY POINT CAPITAL
SAFE POINT STORAGE SAN MATEO
SAN MATEO, CA

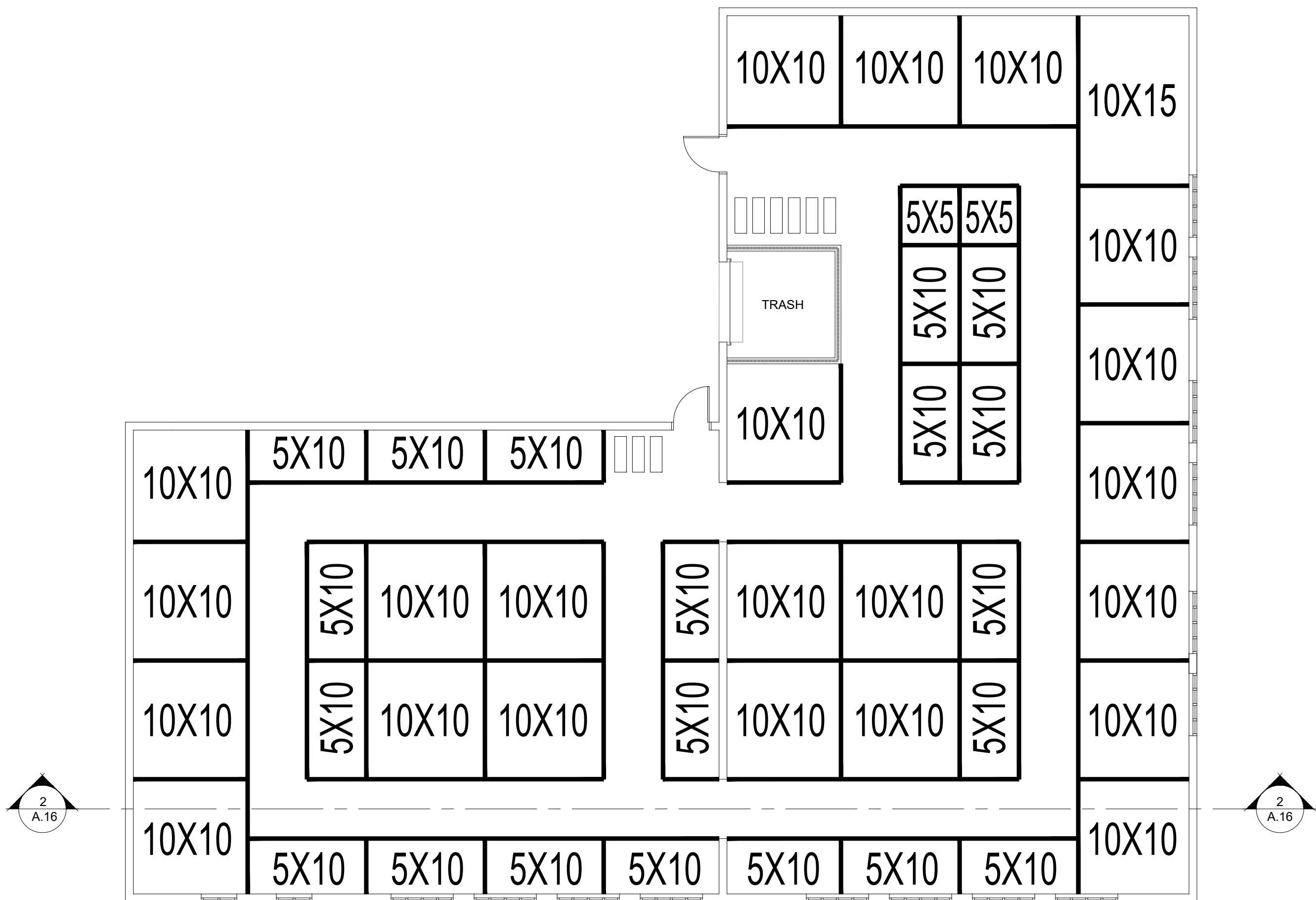
BLDG. B 1ST. LEVEL LOCKER PLAN

THIS DRAWING AND ITS CONTENTS ARE INSTRUMENTS OF SERVICE AND ARE THE COPYRIGHTED PROPERTY OF JORDAN ARCHITECTS, INC. THE USE IS EXPRESSLY INTENDED FOR THE PROJECT NOTED ABOVE AND MAY NOT BE REUSED OR REPRODUCED IN WHOLE OR IN PART WITHOUT THE WRITTEN PERMISSION OF JORDAN ARCHITECTS, INC. "COPYRIGHT" YEAR OF FIRST PUBLICATION 2022 JORDAN ARCHITECTS, INC.

JOB NUMBER: 22-913
SCALE: 1/8"=1'-0"
DATE: 07/12/2023

A.9

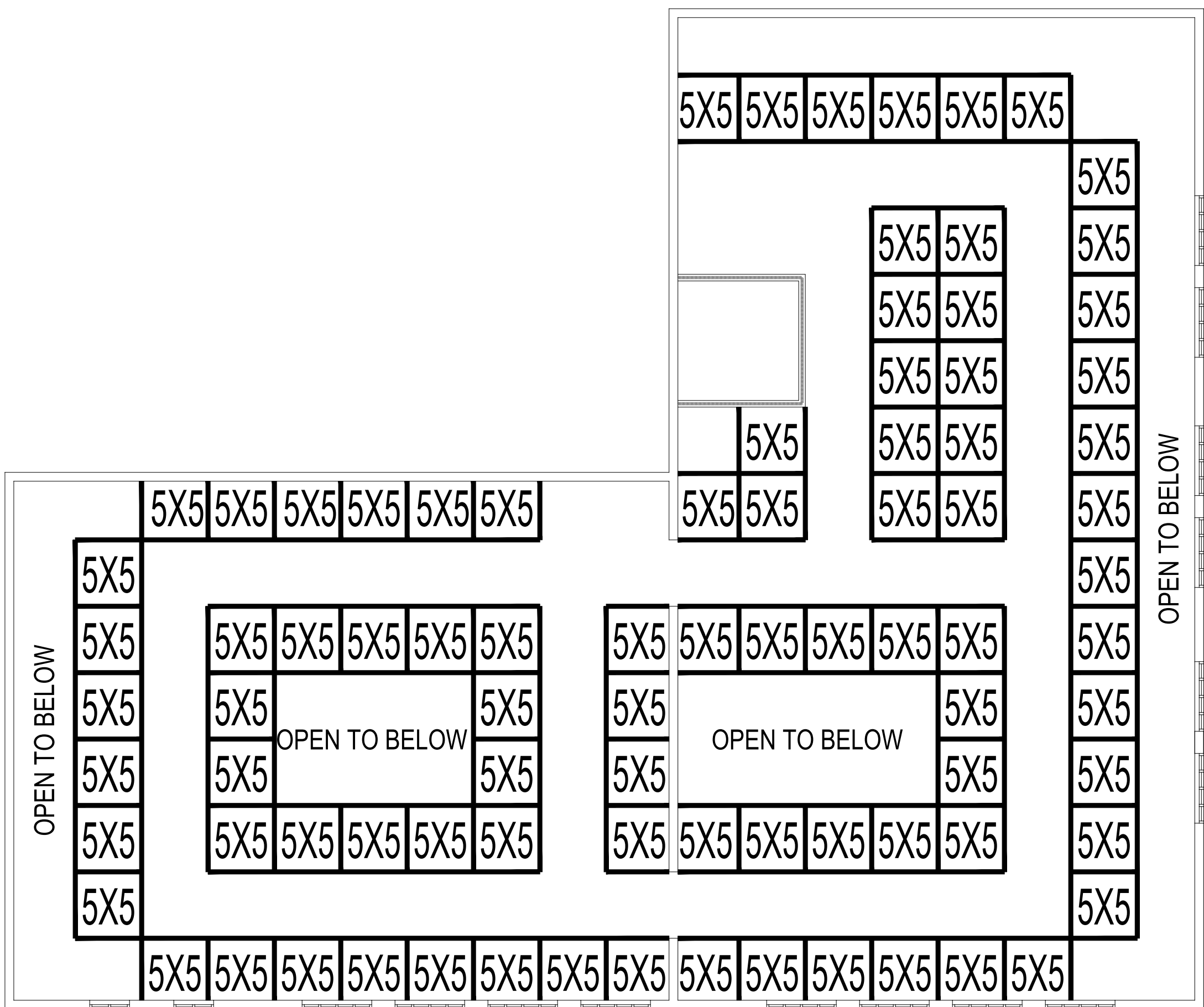
ja
JORDAN
ARCHITECTS
131 CALLE IGLESIA, SUITE 100
SAN CLEMENTE, CA 92672
949.388.8090



BUILDING C 1ST. LEVEL FLOOR PLAN

1/8"=1'-0"

1



BUILDING C 1ST. LEVEL LOCKER PLAN

1/8"=1'-0"

2

STALEY POINT CAPITAL
SAFE POINT STORAGE SAN MATEO
SAN MATEO, CA

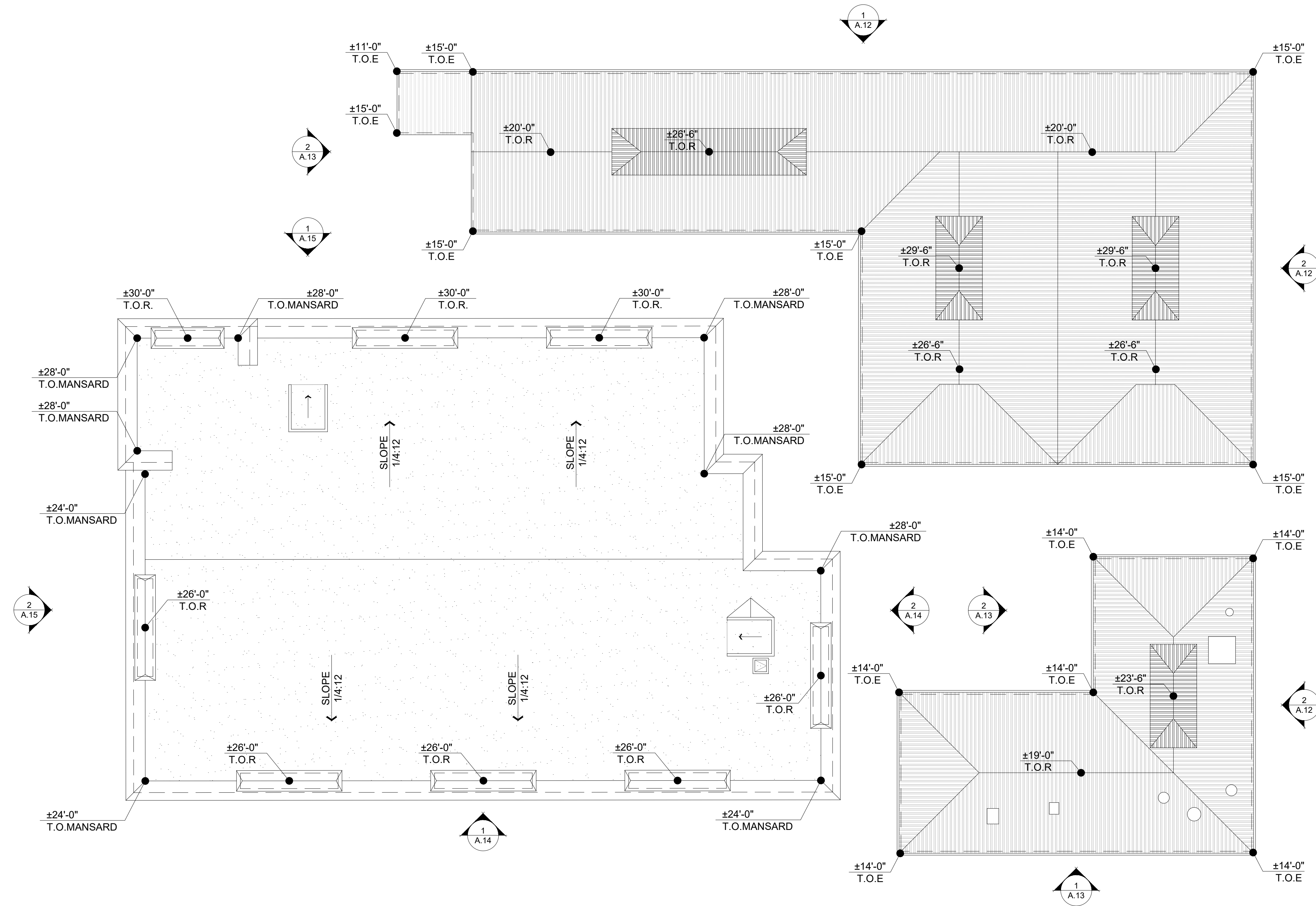
BLDG. C 1ST. FLOOR & LOCKER PLAN

THIS DRAWING AND ITS CONTENTS ARE INSTRUMENTS OF SERVICE AND ARE THE COPYRIGHTED PROPERTY OF JORDAN ARCHITECTS, INC. THE USE IS EXPRESSLY INTENDED FOR THE PROJECT NOTED ABOVE AND MAY NOT BE REUSED OR REPRODUCED IN WHOLE OR IN PART WITHOUT THE WRITTEN PERMISSION OF JORDAN ARCHITECTS, INC. "COPYRIGHT" YEAR OF FIRST PUBLICATION 2022 JORDAN ARCHITECTS, INC.

JOB NUMBER: 22-913
SCALE: 1/8"=1'-0"
DATE: 07/12/2023

A.10

ja
JORDAN
ARCHITECTS
131 CALLE IGLESIA, SUITE 100
SAN CLEMENTE, CA 92672
949.388.8090



GENERAL ROOF PLAN 1
1/16"=1'-0"

STALEY POINT CAPITAL
SAFE POINT STORAGE SAN MATEO
SAN MATEO, CA

GENERAL ROOF PLAN

THIS DRAWING AND ITS CONTENTS ARE INSTRUMENTS OF SERVICE AND ARE THE COPYRIGHTED PROPERTY OF JORDAN ARCHITECTS, INC. THE USE IS EXPRESSLY INTENDED FOR THE PROJECT NOTED ABOVE AND MAY NOT BE REUSED OR REPRODUCED IN WHOLE OR IN PART WITHOUT THE WRITTEN PERMISSION OF JORDAN ARCHITECTS, INC. "COPYRIGHT" YEAR OF FIRST PUBLICATION 2022 JORDAN ARCHITECTS, INC.

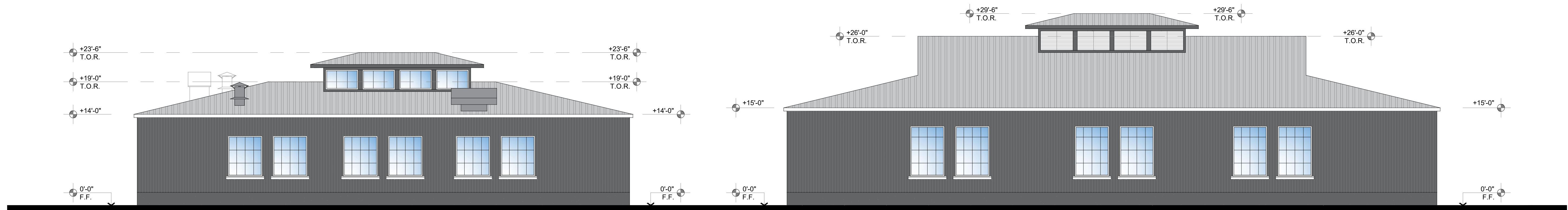
JOB NUMBER: 22-913
SCALE: 1/16"=1'-0"
DATE: 07/12/2023

ja
JORDAN
ARCHITECTS
131 CALLE IGLESIA, SUITE 100
SAN CLEMENTE, CA 92672
949.388.8090

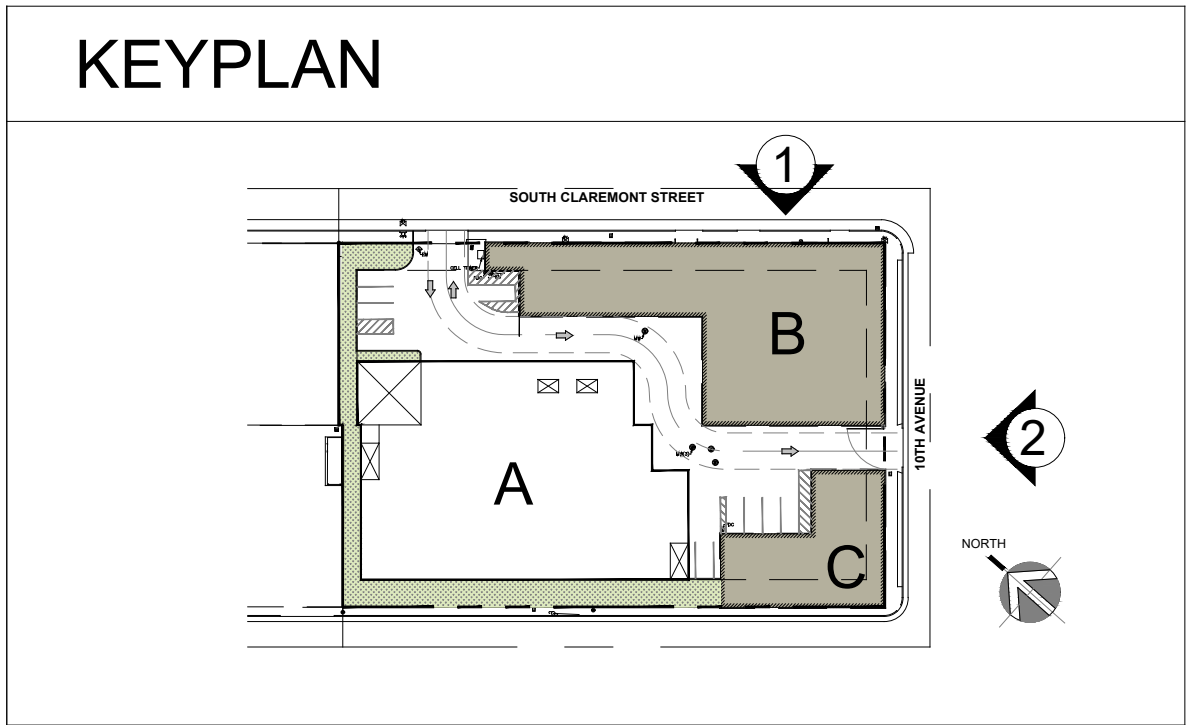
A.11



EXISTING BUILDING B NORTH-EAST ELEVATION 1
1/8"=1'-0"



EXISTING BUILDING B & C SOUTH-EAST ELEVATION 2
1/8"=1'-0"



STALEY POINT CAPITAL SAFE POINT STORAGE SAN MATEO EXISTING BUILDINGS ELEVATIONS SAN MATEO, CA

THIS DRAWING AND ITS CONTENTS ARE INSTRUMENTS OF SERVICE AND ARE THE COPYRIGHTED PROPERTY OF JORDAN ARCHITECTS, INC. THE USE IS EXPRESSLY INTENDED FOR THE PROJECT NOTED ABOVE AND MAY NOT BE REUSED OR REPRODUCED IN WHOLE OR IN PART WITHOUT THE WRITTEN PERMISSION OF JORDAN ARCHITECTS, INC. "COPYRIGHT" YEAR OF FIRST PUBLICATION 2022 JORDAN ARCHITECTS, INC.

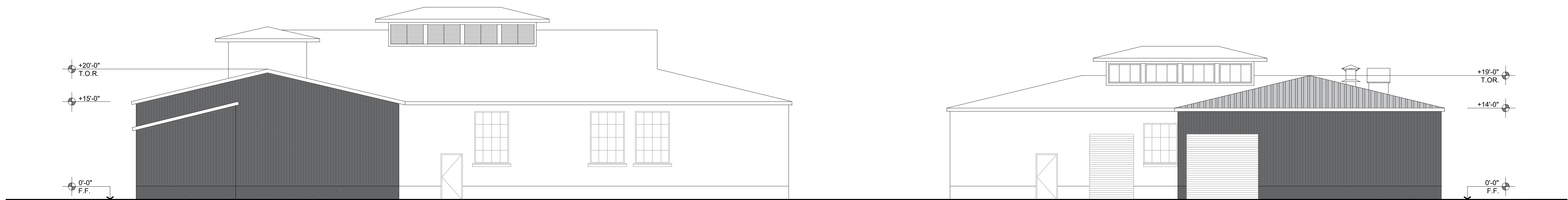
JOB NUMBER: 22-913
SCALE: 1/8"=1'-0"
DATE: 07/12/2023

A.12

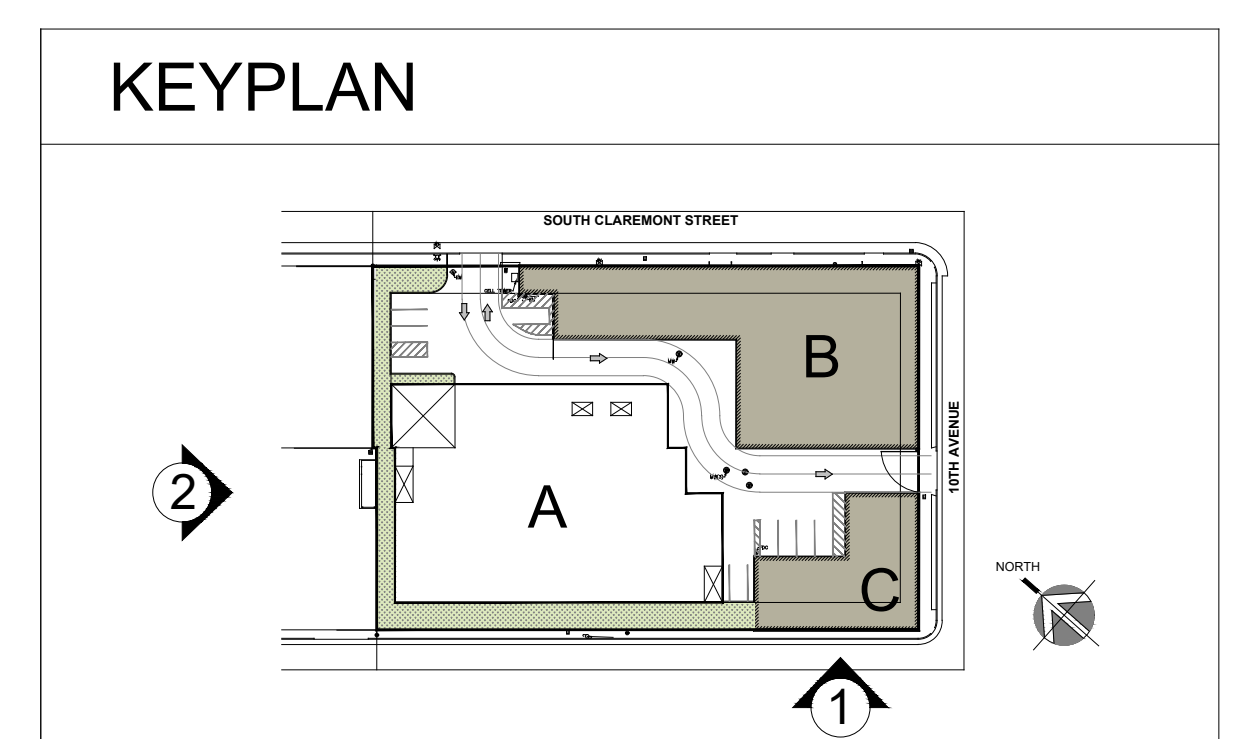




EXISTING BUILDING C SOUTH-WEST ELEVATION 1
1/8"=1'-0"



EXISTING BUILDING B & C NORTH-WEST ELEVATION 2
1/8"=1'-0"



STALEY POINT CAPITAL SAFE POINT STORAGE SAN MATEO EXISTING BUILDINGS ELEVATIONS SAN MATEO, CA

THIS DRAWING AND ITS CONTENTS ARE INSTRUMENTS OF SERVICE AND ARE THE COPYRIGHTED PROPERTY OF JORDAN ARCHITECTS, INC. THE USE IS EXPRESSLY INTENDED FOR THE PROJECT NOTED ABOVE AND MAY NOT BE REUSED OR REPRODUCED IN WHOLE OR IN PART WITHOUT THE WRITTEN PERMISSION OF JORDAN ARCHITECTS, INC. "COPYRIGHT" YEAR OF FIRST PUBLICATION 2022 JORDAN ARCHITECTS, INC.

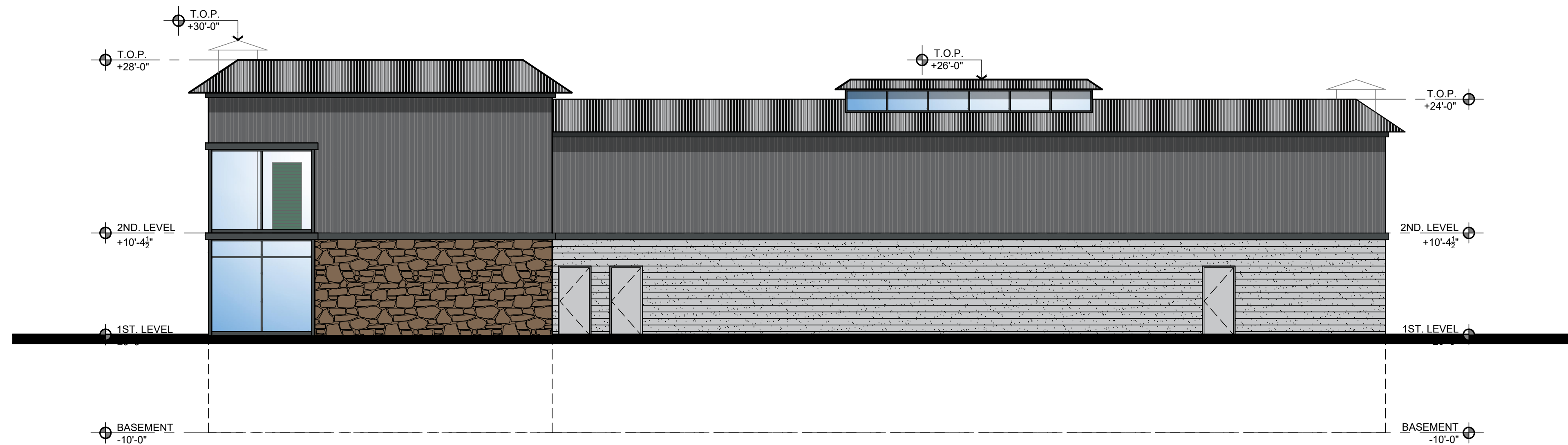
JOB NUMBER: 22-913
SCALE: 1/8"=1'-0"
DATE: 07/12/2023

A.13

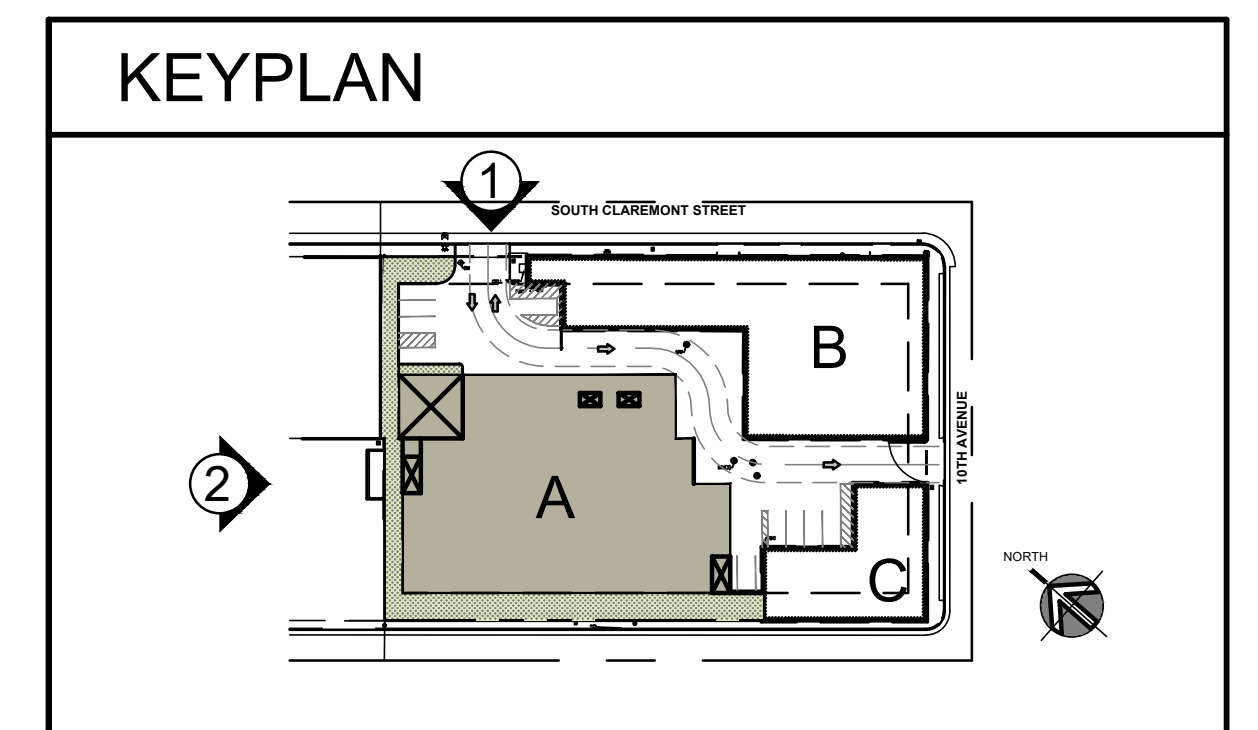
ja
JORDAN
ARCHITECTS
131 CALLE IGLESIA, SUITE 100
SAN CLEMENTE, CA 92672
949.388.8090



BUILDING A NORTH-EAST ELEVATION 1
1/8"=1'-0"



BUILDING A NORTH-WEST ELEVATION 2
1/8"=1'-0"



STALEY POINT CAPITAL
SAFE POINT STORAGE SAN MATEO
SAN MATEO, CA

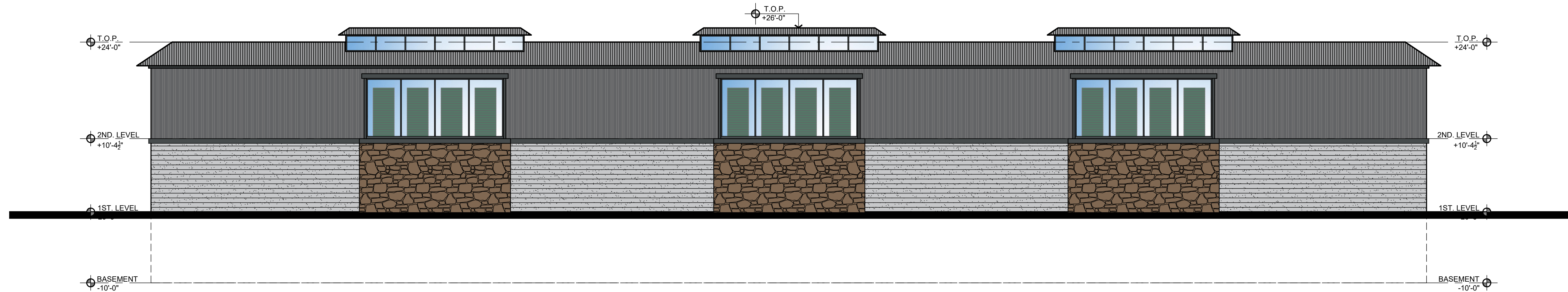
BUILDING A ELEVATIONS

THIS DRAWING AND ITS CONTENTS ARE INSTRUMENTS OF SERVICE AND ARE THE COPYRIGHTED PROPERTY OF JORDAN ARCHITECTS, INC. THE USE IS EXPRESSLY INTENDED FOR THE PROJECT NOTED ABOVE AND MAY NOT BE REUSED OR REPRODUCED IN WHOLE OR IN PART WITHOUT THE WRITTEN PERMISSION OF JORDAN ARCHITECTS, INC. "COPYRIGHT" YEAR OF FIRST PUBLICATION 2022 JORDAN ARCHITECTS, INC.

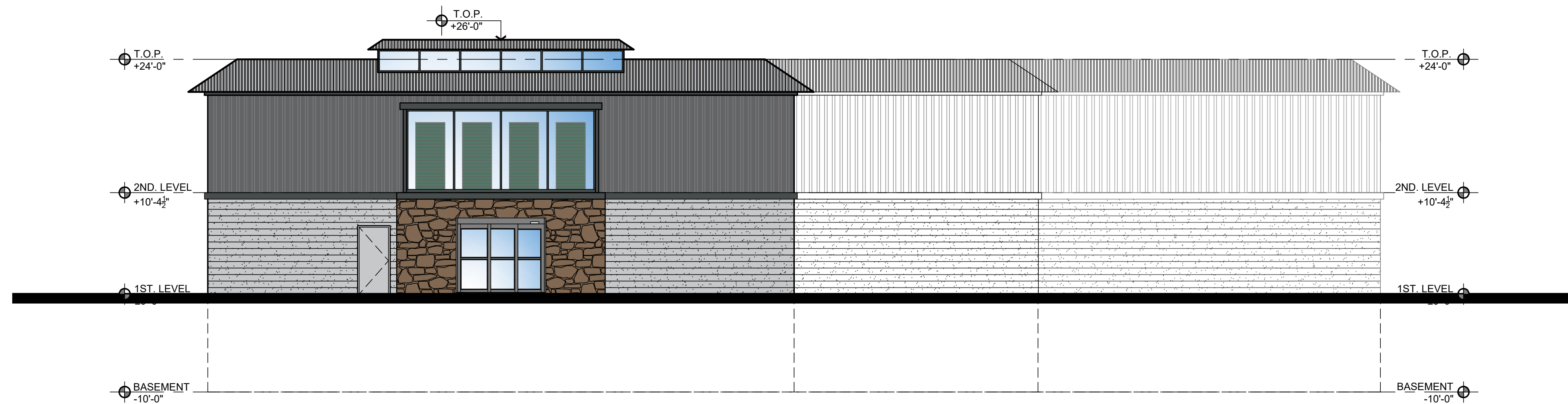
JOB NUMBER: 22-913
SCALE: 1/8"=1'-0"
DATE: 07/12/2023

A.14

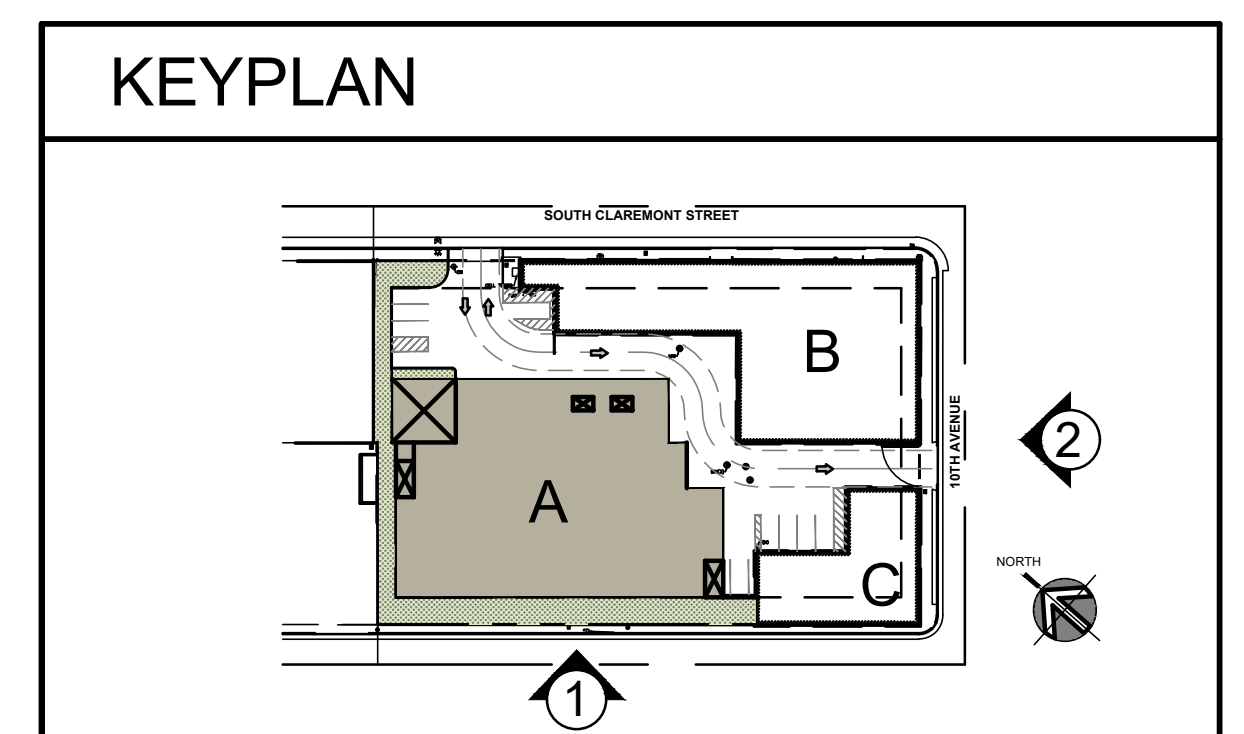




BUILDING A SOUTH-WEST ELEVATION ①
1/8"=1'-0"



BUILDING A SOUTH-EAST ELEVATION ②
1/8"=1'-0"



STALEY POINT CAPITAL
SAFE POINT STORAGE SAN MATEO
SAN MATEO, CA

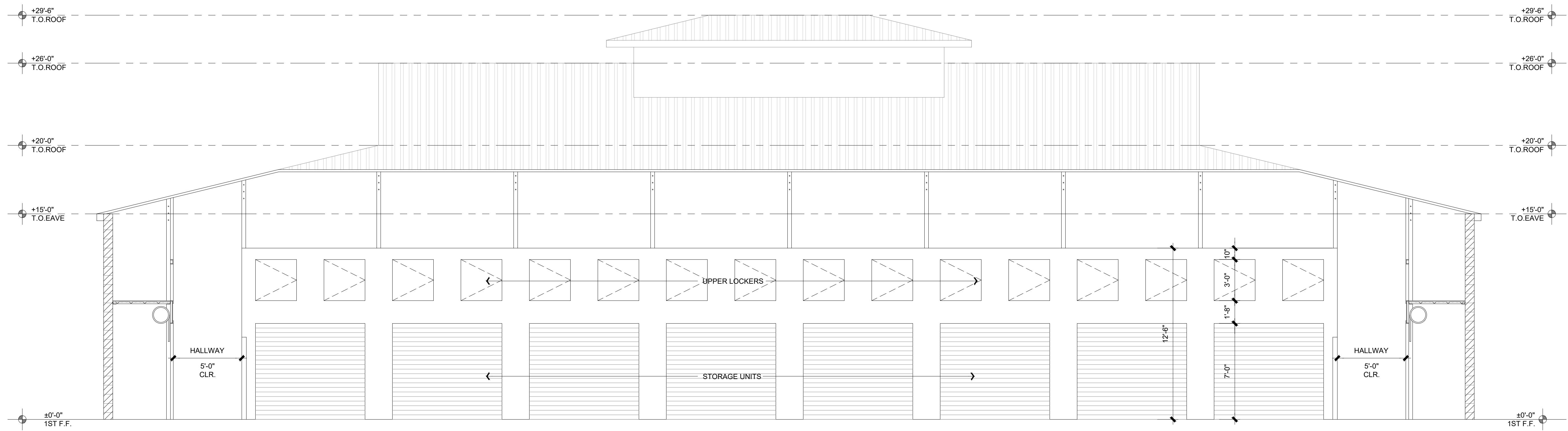
BUILDING A ELEVATIONS

THIS DRAWING AND ITS CONTENTS ARE INSTRUMENTS OF SERVICE AND ARE THE COPYRIGHTED PROPERTY OF JORDAN ARCHITECTS, INC. THE USE IS EXPRESSLY INTENDED FOR THE PROJECT NOTED ABOVE AND MAY NOT BE REUSED OR REPRODUCED IN WHOLE OR IN PART WITHOUT THE WRITTEN PERMISSION OF JORDAN ARCHITECTS, INC. "COPYRIGHT" YEAR OF FIRST PUBLICATION 2022 JORDAN ARCHITECTS, INC.

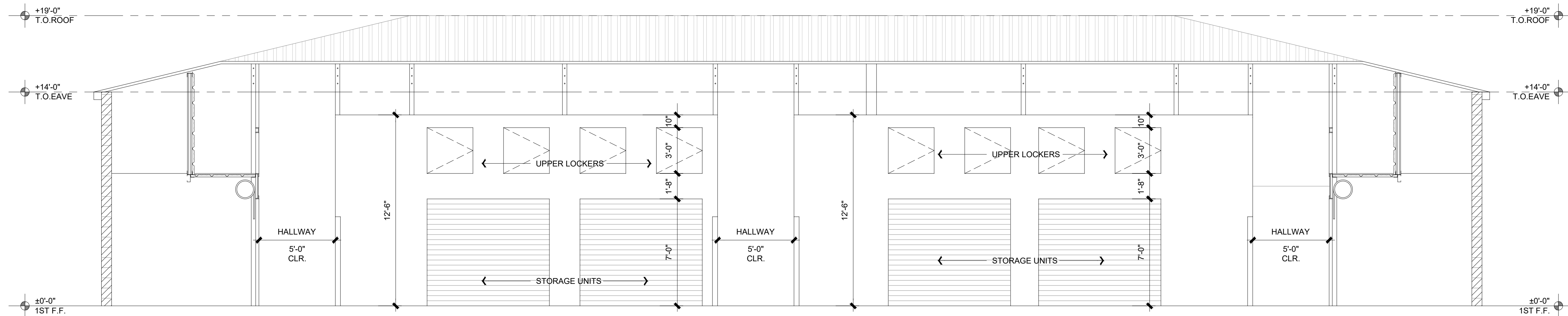
JOB NUMBER: 22-913
SCALE: 1/8"=1'-0"
DATE: 07/12/2023

A.15

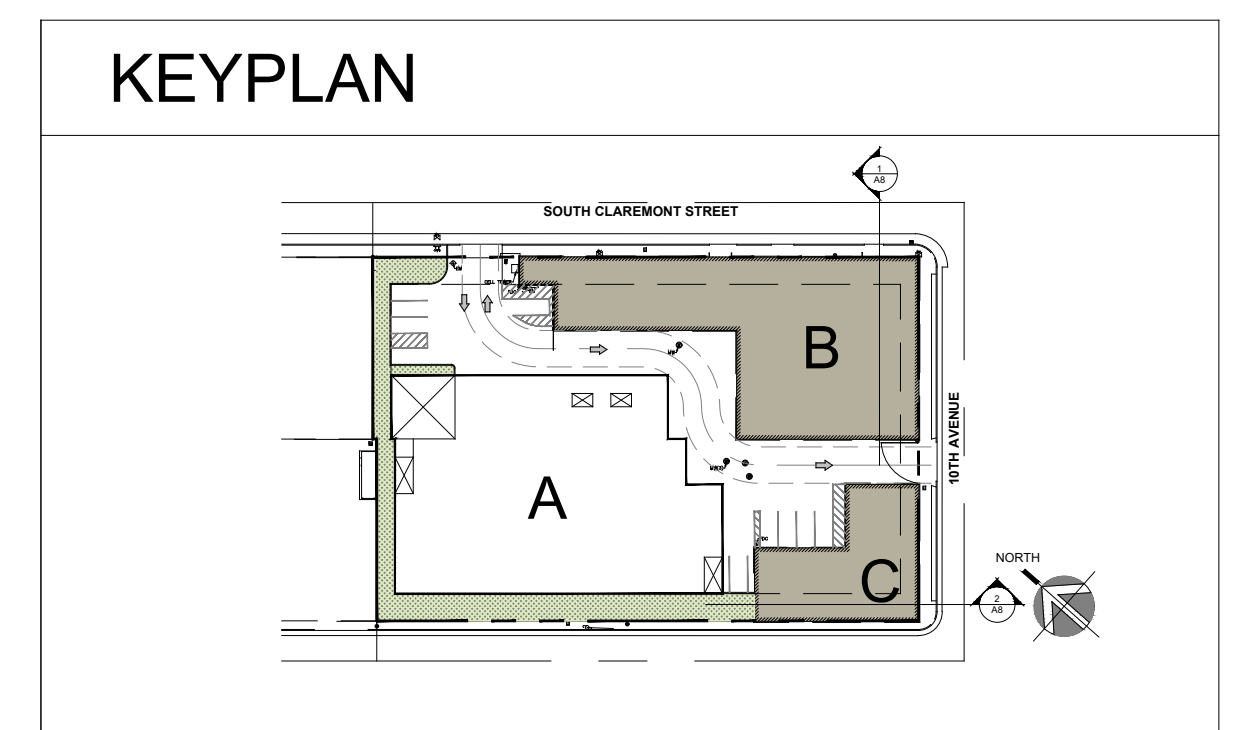




EXISTING BUILDING B SECTION 1
1/4"=1'-0"



EXISTING BUILDING C SECTION 2
1/4"=1'-0"



STALEY POINT CAPITAL SAFE POINT STORAGE SAN MATEO EXISTING BUILDINGS SECTIONS SAN MATEO, CA

THIS DRAWING AND ITS CONTENTS ARE INSTRUMENTS OF SERVICE AND ARE THE COPYRIGHTED PROPERTY OF JORDAN ARCHITECTS, INC. THE USE IS EXPRESSLY INTENDED FOR THE PROJECT NOTED ABOVE AND MAY NOT BE REUSED OR REPRODUCED IN WHOLE OR IN PART WITHOUT THE WRITTEN PERMISSION OF JORDAN ARCHITECTS, INC. "COPYRIGHT" YEAR OF FIRST PUBLICATION 2022 JORDAN ARCHITECTS, INC.

JOB NUMBER: 22-913
SCALE: 1/8"=1'-0"
DATE: 07/12/2023



A.16



STALEY POINT CAPITAL
 SAFE POINT STORAGE SAN MATEO PRELIMINARY RENDERING
 SAN MATEO, CA

THIS DRAWING AND ITS CONTENTS ARE INSTRUMENTS OF SERVICE AND ARE THE COPYRIGHTED PROPERTY OF JORDAN ARCHITECTS, INC. THE USE IS EXPRESSLY INTENDED FOR THE PROJECT NOTED ABOVE AND MAY NOT BE REUSED OR REPRODUCED IN WHOLE OR IN PART WITHOUT THE WRITTEN PERMISSION OF JORDAN ARCHITECTS, INC. "COPYRIGHT" YEAR OF FIRST PUBLICATION 2022 JORDAN ARCHITECTS, INC.

JOB NUMBER: 22-913
 SCALE: N.I.S.
 DATE: 07/12/2023

A.17

ja
 JORDAN
 ARCHITECTS
 131 CALLE IGLESIA, SUITE 100
 SAN CLEMENTE, CA 92672
 949.388.8090



STALEY POINT CAPITAL SAFE POINT STORAGE SAN MATEO PRELIMINARY RENDERING SAN MATEO, CA

THIS DRAWING AND ITS CONTENTS ARE INSTRUMENTS OF SERVICE AND ARE THE COPYRIGHTED PROPERTY OF JORDAN ARCHITECTS, INC. THE USE IS EXPRESSLY INTENDED FOR THE PROJECT NOTED ABOVE AND MAY NOT BE REUSED OR REPRODUCED IN WHOLE OR IN PART WITHOUT THE WRITTEN PERMISSION OF JORDAN ARCHITECTS, INC. "COPYRIGHT" YEAR OF FIRST PUBLICATION 2022 JORDAN ARCHITECTS, INC.

JOB NUMBER: 22-913
SCALE: N.I.S.
DATE: 07/12/2023

A.18

ja
JORDAN
ARCHITECTS
131 CALLE IGLESIA, SUITE 100
SAN CLEMENTE, CA 92672
949.388.8090



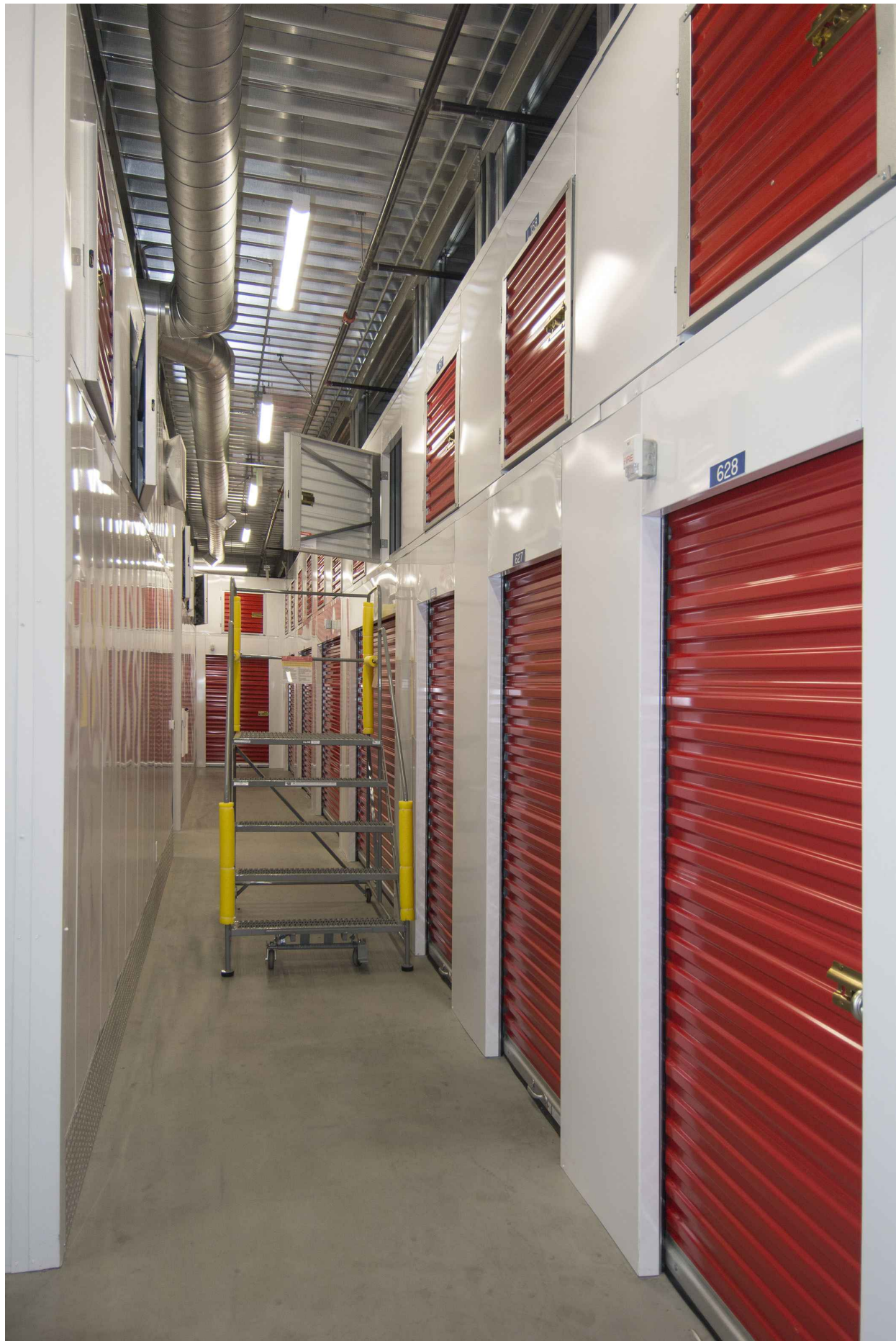
STALEY POINT CAPITAL
 SAFE POINT STORAGE SAN MATEO PRELIMINARY RENDERING
 SAN MATEO, CA

THIS DRAWING AND ITS CONTENTS ARE INSTRUMENTS OF
 SERVICE AND ARE THE COPYRIGHTED PROPERTY OF JORDAN
 ARCHITECTS, INC. THE USE IS EXPRESSLY INTENDED FOR THE
 PROJECT NOTED ABOVE AND MAY NOT BE REUSED OR
 REPRODUCED IN WHOLE OR IN PART WITHOUT THE WRITTEN
 PERMISSION OF JORDAN ARCHITECTS, INC. "COPYRIGHT"
 YEAR OF FIRST PUBLICATION 2022 JORDAN ARCHITECTS, INC.

JOB NUMBER: 22-913
 SCALE: N.I.S.
 DATE: 07/12/2023

A.19

ja
 JORDAN
 ARCHITECTS
 131 CALLE IGLESIA, SUITE 100
 SAN CLEMENTE, CA 92672
 949.388.8090



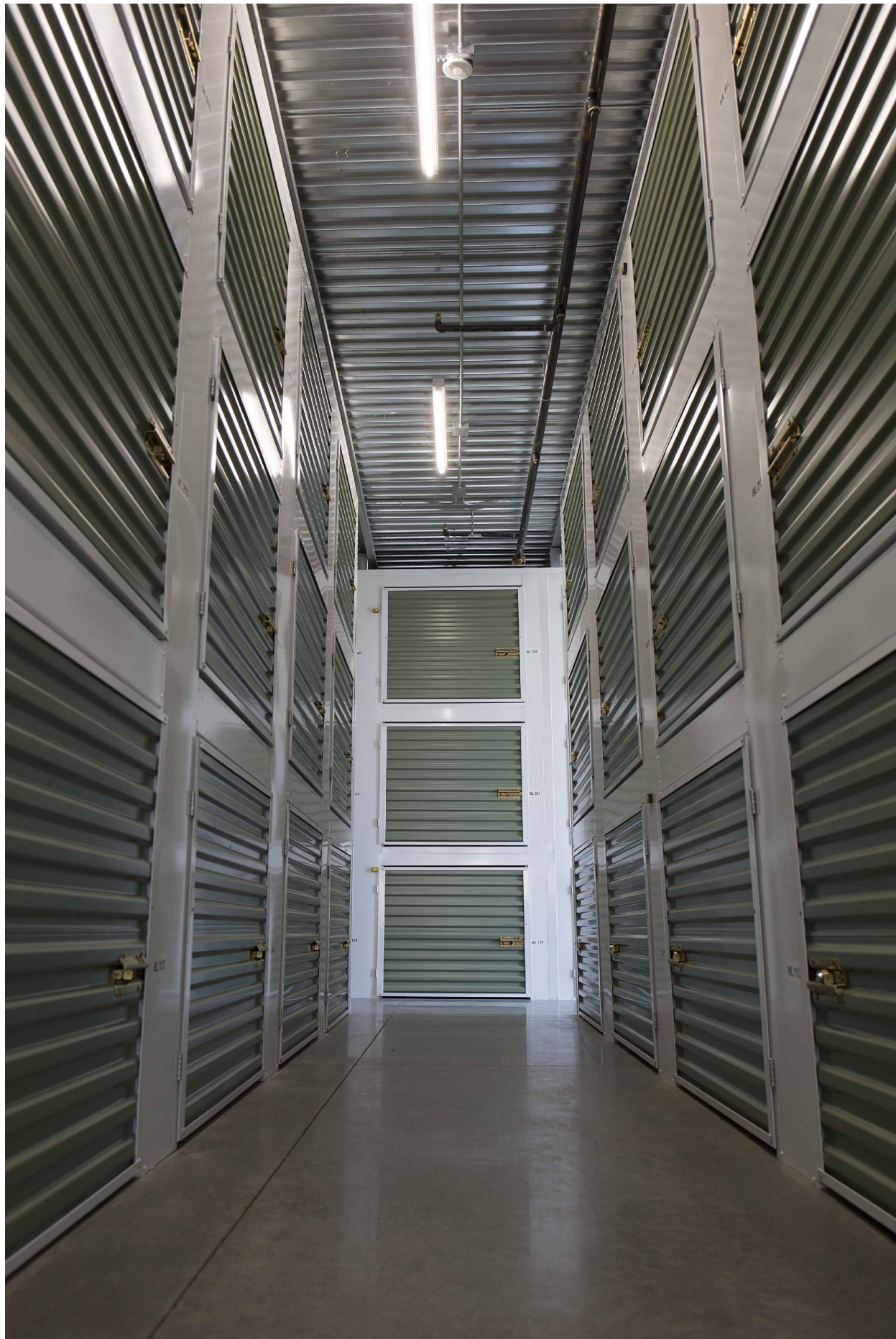
TYPICAL HALLWAY WITH LOCKERS

1



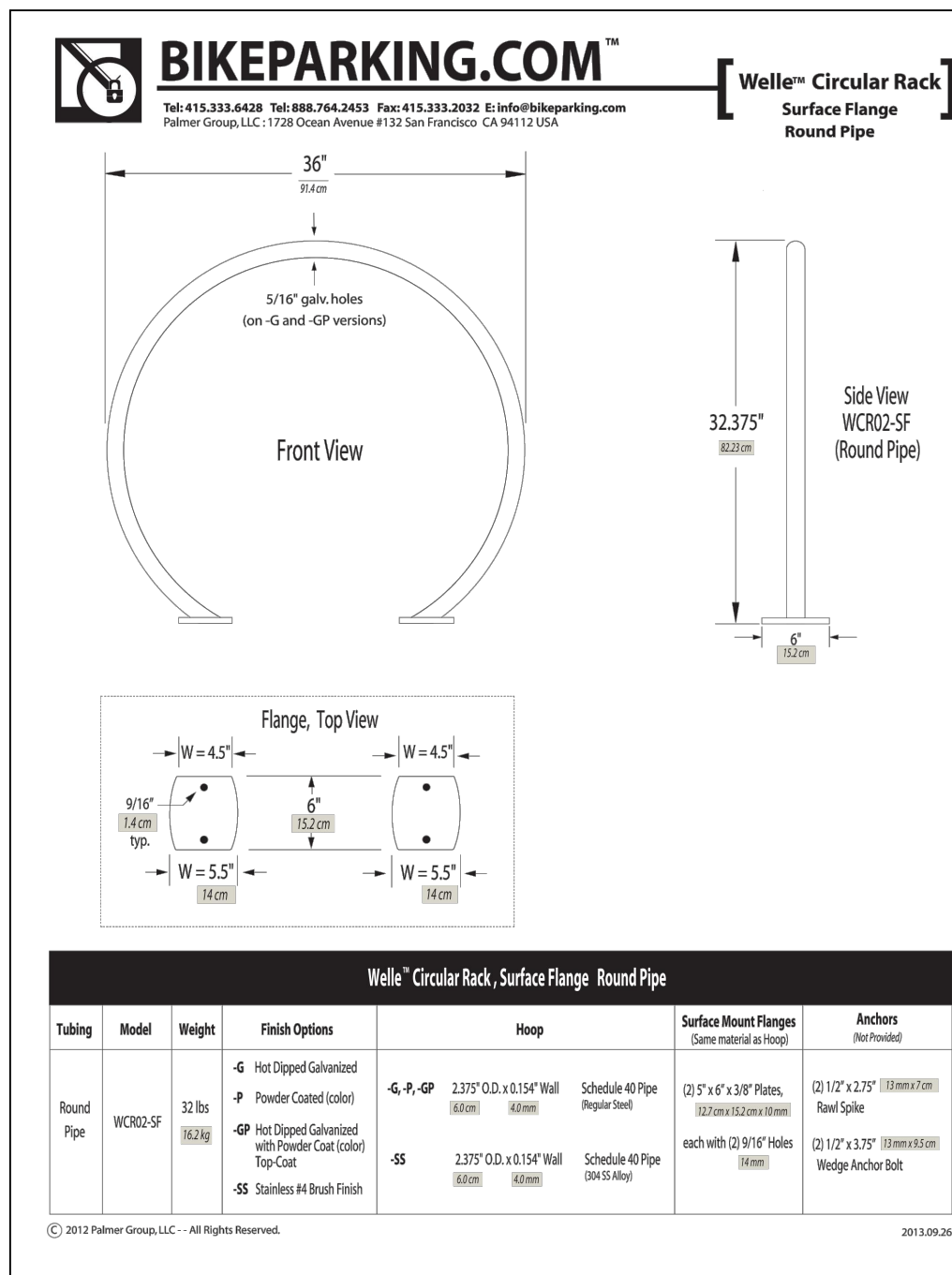
TYPICAL HALLWAY

2



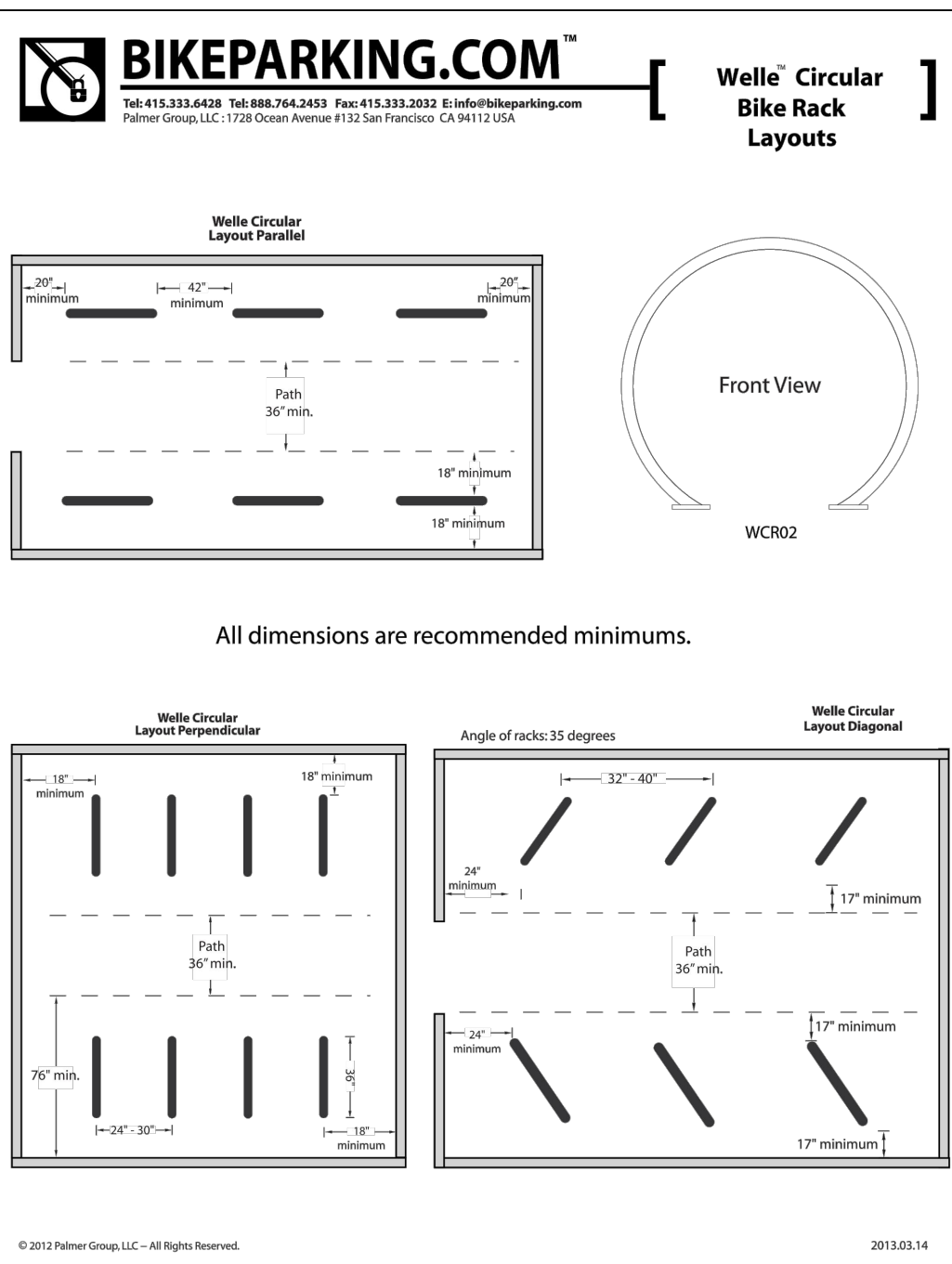
TYPICAL WINE STORAGE

3



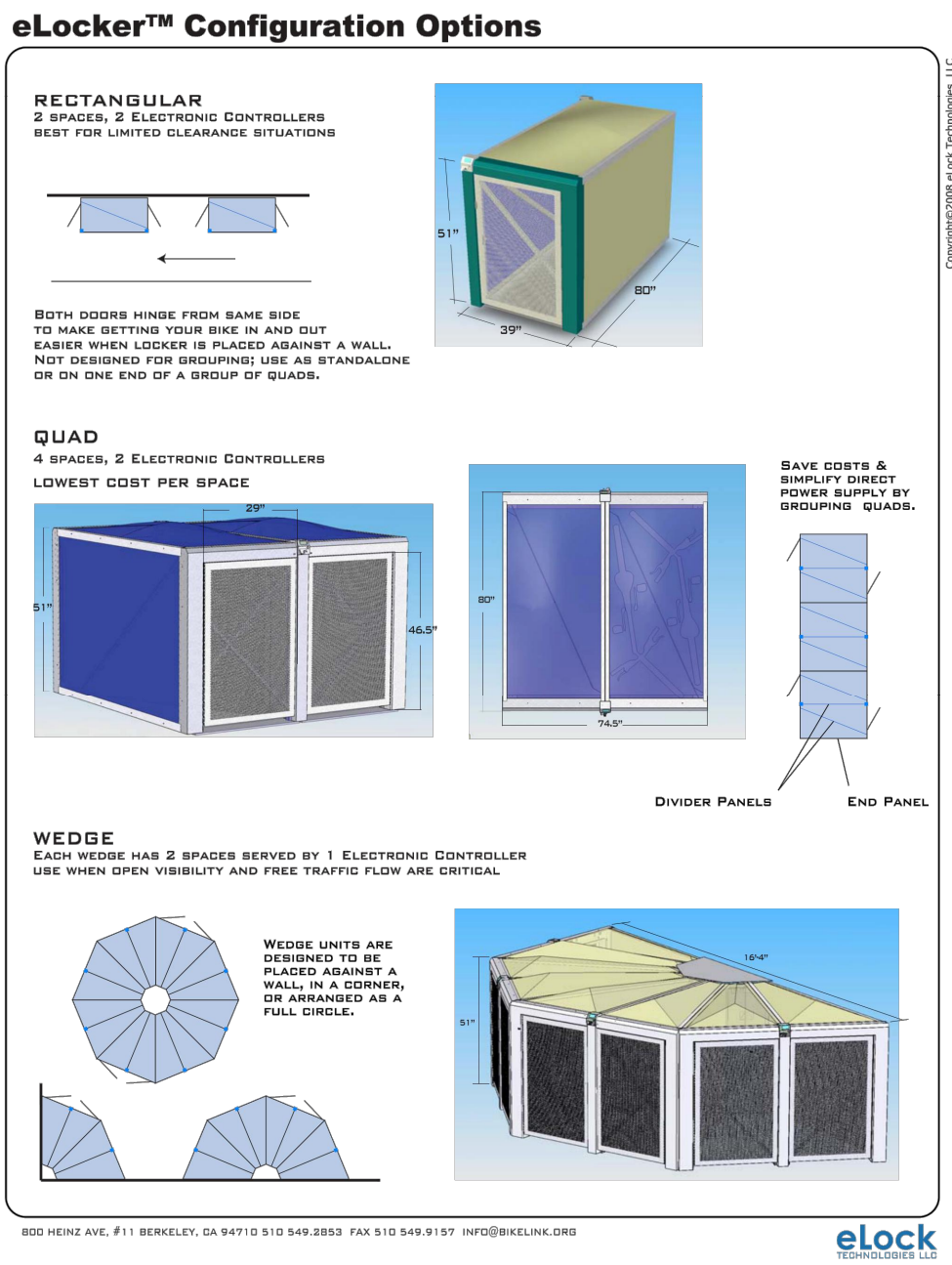
SHORT TERM BIKE RACK

4



LONG TERM BIKE LOCKER

5



STALEY POINT CAPITAL
SAFE POINT STORAGE SAN MATEO
SAN MATEO, CA

REFERENCE IMAGES

THIS DRAWING AND ITS CONTENTS ARE INSTRUMENTS OF SERVICE AND ARE THE COPYRIGHTED PROPERTY OF JORDAN ARCHITECTS, INC. THE USE IS EXPRESSLY INTENDED FOR THE PROJECT NOTED ABOVE AND MAY NOT BE REUSED OR REPRODUCED IN WHOLE OR IN PART WITHOUT THE WRITTEN PERMISSION OF JORDAN ARCHITECTS, INC. "COPYRIGHT" YEAR OF FIRST PUBLICATION 2022 JORDAN ARCHITECTS, INC.

JOB NUMBER: 22-913
SCALE: N.I.S.
DATE: 07/12/2023

A.20

ja
JORDAN
ARCHITECTS
131 CALLE IGLESIA, SUITE 100
SAN CLEMENTE, CA 92672
949.388.8090