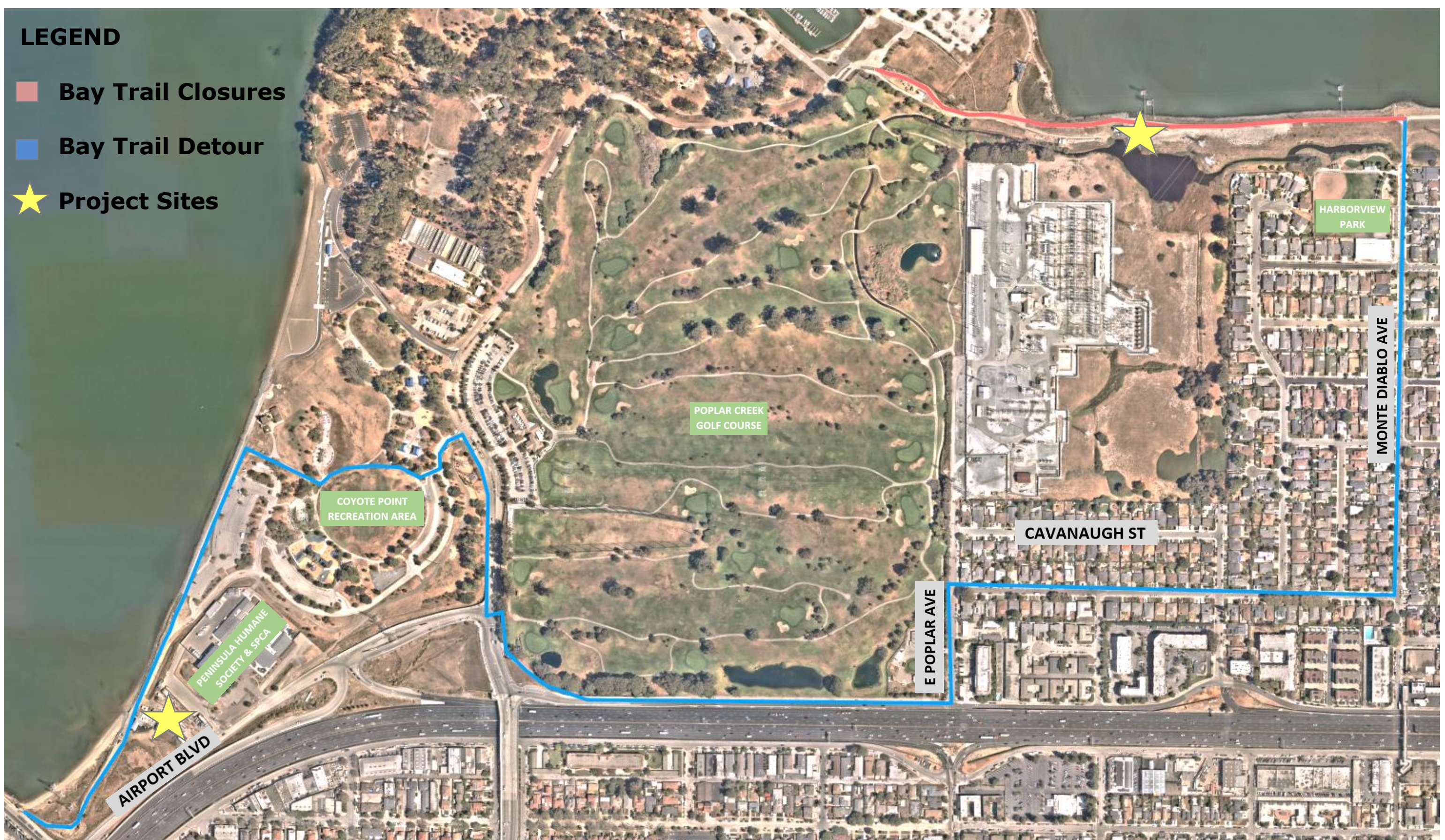


# BAY TRAIL DETOUR

Construction on the Coyote Point and Poplar Avenue Pump Stations is nearing completion. A portion of the Bay Trail has reopened; however, a detour is still in place to access the trail south of Coyote Point Park.

We anticipate reopening the entire trail by early 2023.

**Please be aware of other vehicles on the detour route.**



[www.cityofsanmateo.org/FloodProject](http://www.cityofsanmateo.org/FloodProject)