



# **U.S. Hwy 101/ Peninsula Avenue Interchange Project**

**COMMUNITY MEETING**

**Jan. 27, 2021**

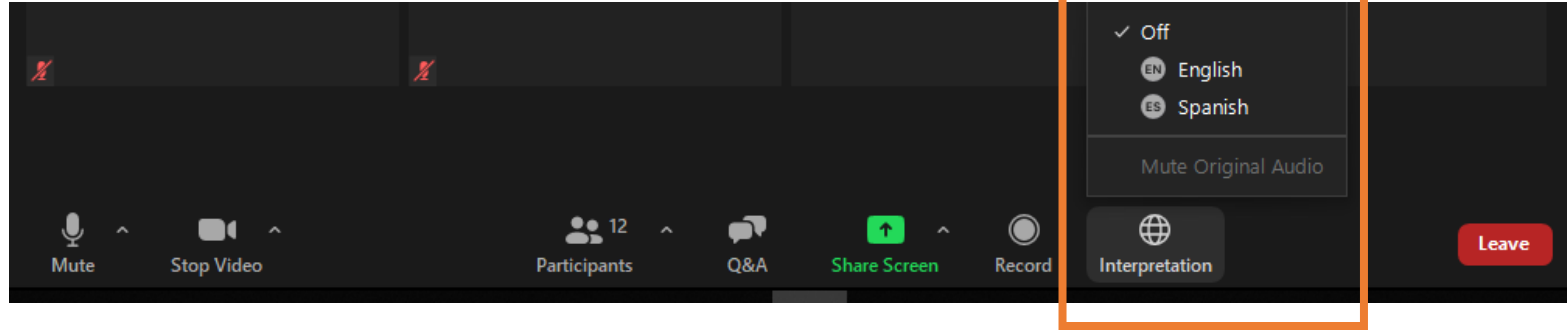
**6:00 p.m.**

# Traducción al español

- Traducción al español estará disponible para la reunión de esta noche.
- Esta reunión se está grabando y estará disponible para aquellas personas que se perdieron la reunión.



## Parte inferior de la pantalla



- Haga clic en el botón Interpretación en la parte inferior de su pantalla en un minuto
- Elija español para escuchar la presentación en español
- Haga clic en "Silenciar audio original" para desactivar el audio en inglés

# Agenda/Overview

- Identifying the Problem
- Short-Term Solutions Completed
- Long-Term Solution: The Proposed Project
- Proposed Project Benefits
- Community Changes
- Timeline and Next Steps
- Question & Answers



# Q&A

- Please raise your hand *after the presentation* to ask a question.
- Questions will be answered orally in the order received.
- This meeting is being recorded and will be available for anyone who was not able to attend.



# Presenters and Panelists



Eileen Goodwin  
APEX Strategies



Matthew Zucca  
City of San Mateo



Bethany Lopez  
City of San Mateo



Joe Hurley  
SMCTA



Ramesh Sathiamurthy  
SMCTA Consultant



Ravi Puttagunta  
SMCTA Consultant



# Welcome from the City of San Mateo



# Goals For Tonight's Meeting

- Provide project updates
- Provide staff to answer your questions
- Listen to your feedback on proposed project changes
- Explain the steps to move the proposed project forward





# Project Partner Roles



Project Sponsor



Funding Partner



CEQA/NEPA Lead Agency  
Interchange Owner/Operator



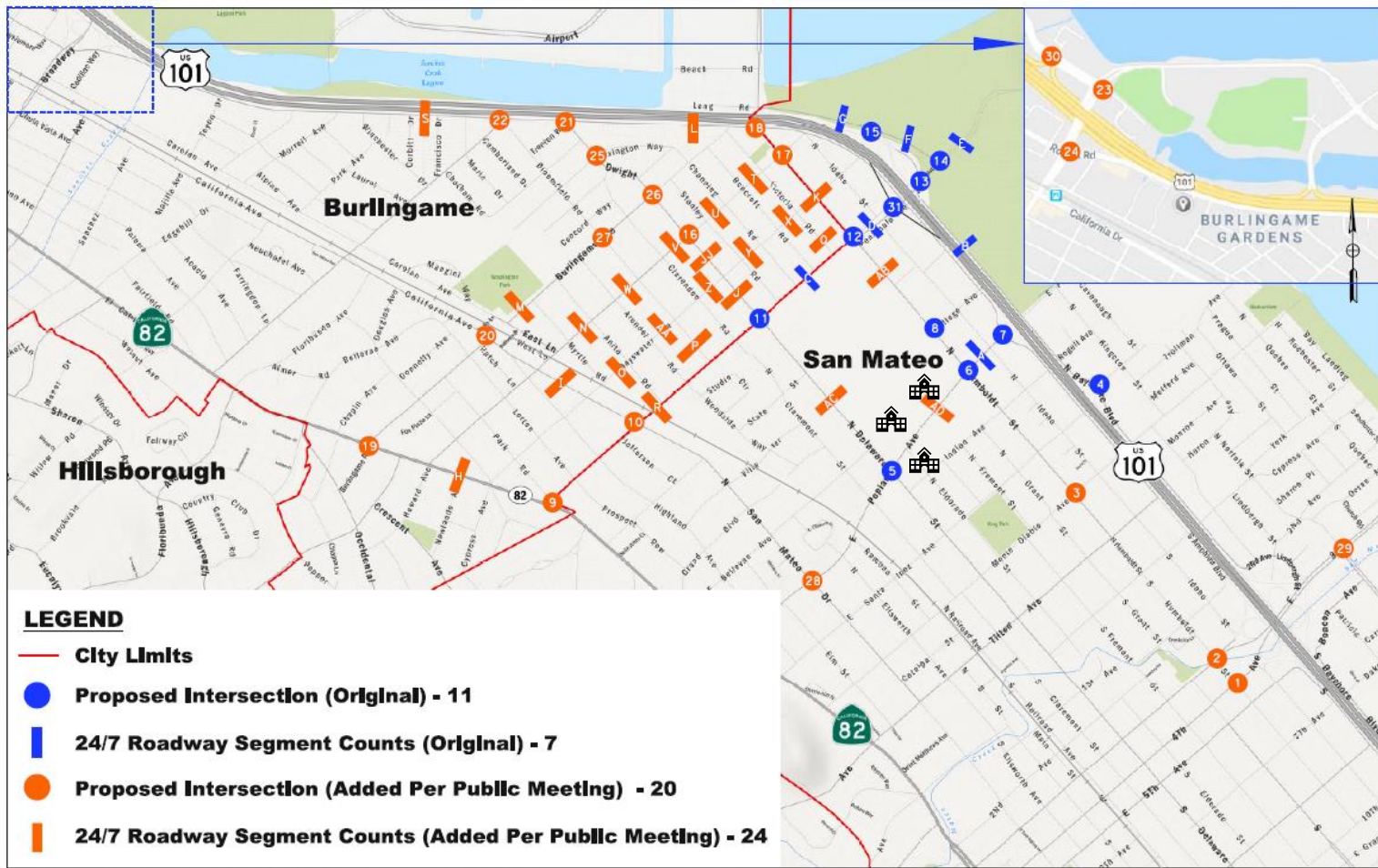
# Timeline



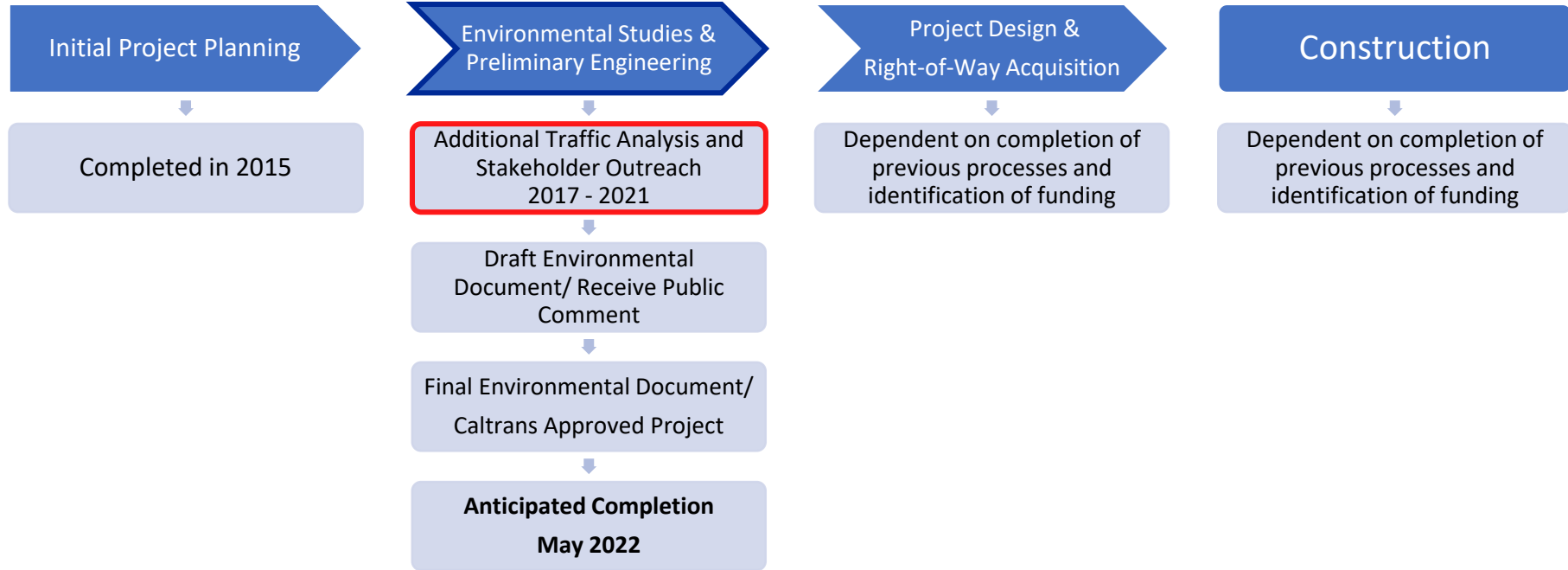
# Proposed Project Background

- 1988 —→ The proposed project was identified in the voter approved expenditure plan (Measure A)
- 2004-2007 —→ City initiated US 101 Poplar/Amphlett Corridor Study
  - Identified need for safety improvements, but no support for ramps at Peninsula Avenue
- 2009-2012 —→ City renewed its interest in Poplar Ave safety
  - Short term solution: Poplar Corridor Safety Improvement Project
  - Long term solution: Southbound freeway ramps at Peninsula Avenue
- 2014-2015 —→ SMCTA retained engineering consultant
  - A Project Initiation Document was approved by Caltrans. It allowed funding for a project to move the southbound ramps to Peninsula Avenue – May 2015
  - Caltrans can now prepare preliminary engineering and environmental clearance
- 2016-Present —→ Traffic Study and Stakeholder Engagement
  - Poplar Corridor Safety Improvement Project – Completed **Mar 2017**
  - Community Meetings held in Burlingame and San Mateo – **May 2017**
  - Extensive Traffic Analysis Complete – **Dec 2019**
  - Project updates provided to the San Mateo City Council – **Feb 2020**
  - Property Owner/Business and Community-wide Meetings – **Jan 2021**
  - Stakeholder Outreach with Local Schools around Poplar – **Jan 2021**





# Project Development Process



# Topics to be studied for the environmental document

- Community Impact Assessment
  - Land Use
  - Consistency with Plans, Programs, and Policies
  - Parks and Recreation
  - Growth
  - Community Character and Cohesion
  - Relocations and Real Property Acquisition
  - Environmental Justice
- Traffic/Transportation/Pedestrian and Bicycle Facilities
- Visual/Aesthetics
- Cultural Resources
- Hydrology and Floodplain
- Water Quality and Storm Water Runoff
- Geology and Paleontology
- Air Quality
- Noise and Vibration
- Biological Resources

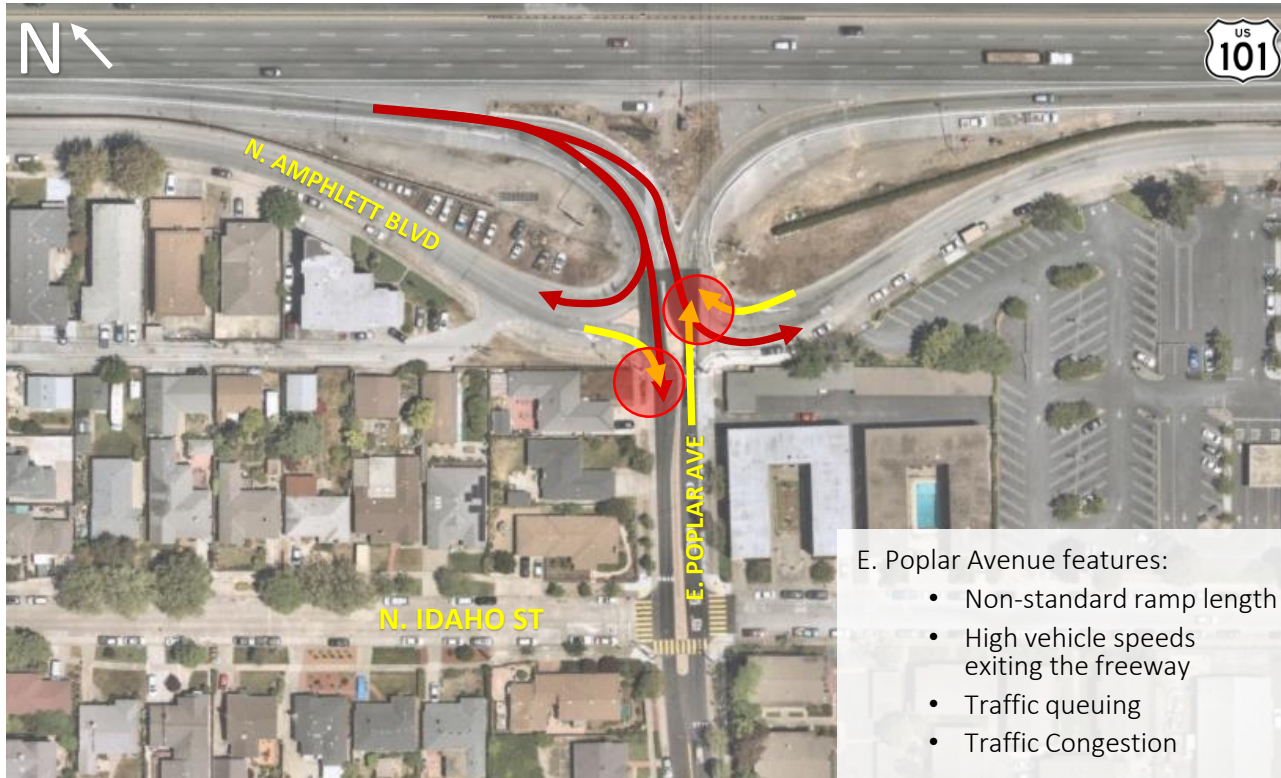


# Proposed Project Location





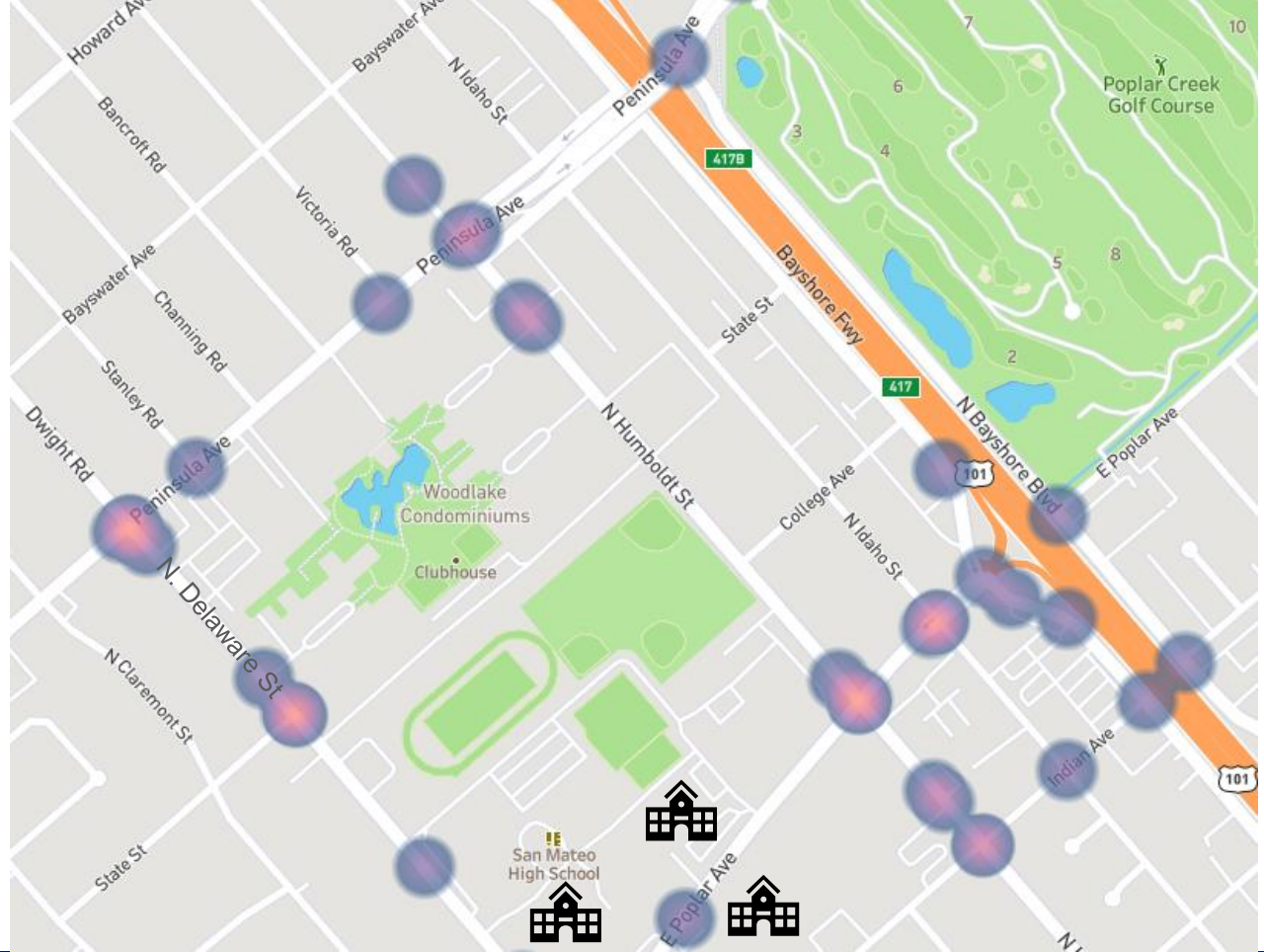
# US101 SB Off Ramp at E. Poplar Ave





# Collision Data

Post Short-Term E. Poplar  
Avenue Improvements



**U.S. Hwy 101/Peninsula Ave Interchange Project**  
[www.CityofSanMateo.org/Peninsula](http://www.CityofSanMateo.org/Peninsula)

# E. Poplar Ave vs Peninsula Ave

E. Poplar Ave



- One Lane in Each Direction
- On-Street Parking & Driveways
- No Shoulders

*Not Able to handle future traffic volumes*

Peninsula Ave



- Two Lanes in Each Direction
- No Parking, No Driveways
- 5-foot Shoulders/Bike Lane

*Able to handle future traffic volumes*

# Land Use Changes Cause Traffic Changes

- Land use has changed dramatically since the E. Poplar Ave ramps were built in the 1950's
- In the next 20 years, both San Mateo and Burlingame are going to keep growing

	San Mateo			Burlingame		
	1960	2020	2040	1960	2020	2040
Total Population	69,870	108,175	133,005	24,036	29,975	33,145
Number of Households	18,933	43,035	50,830	6,848	12,755	13,735
Number of Jobs	--	62,570	68,010	--	32,335	42,625

Source: Plan Bay Area 2040 Projections



**U.S. Hwy 101/Peninsula Ave Interchange Project**

[www.CityofSanMateo.org/Peninsula](http://www.CityofSanMateo.org/Peninsula)

# Typical AM Peak (Pre-COVID) Traffic Condition



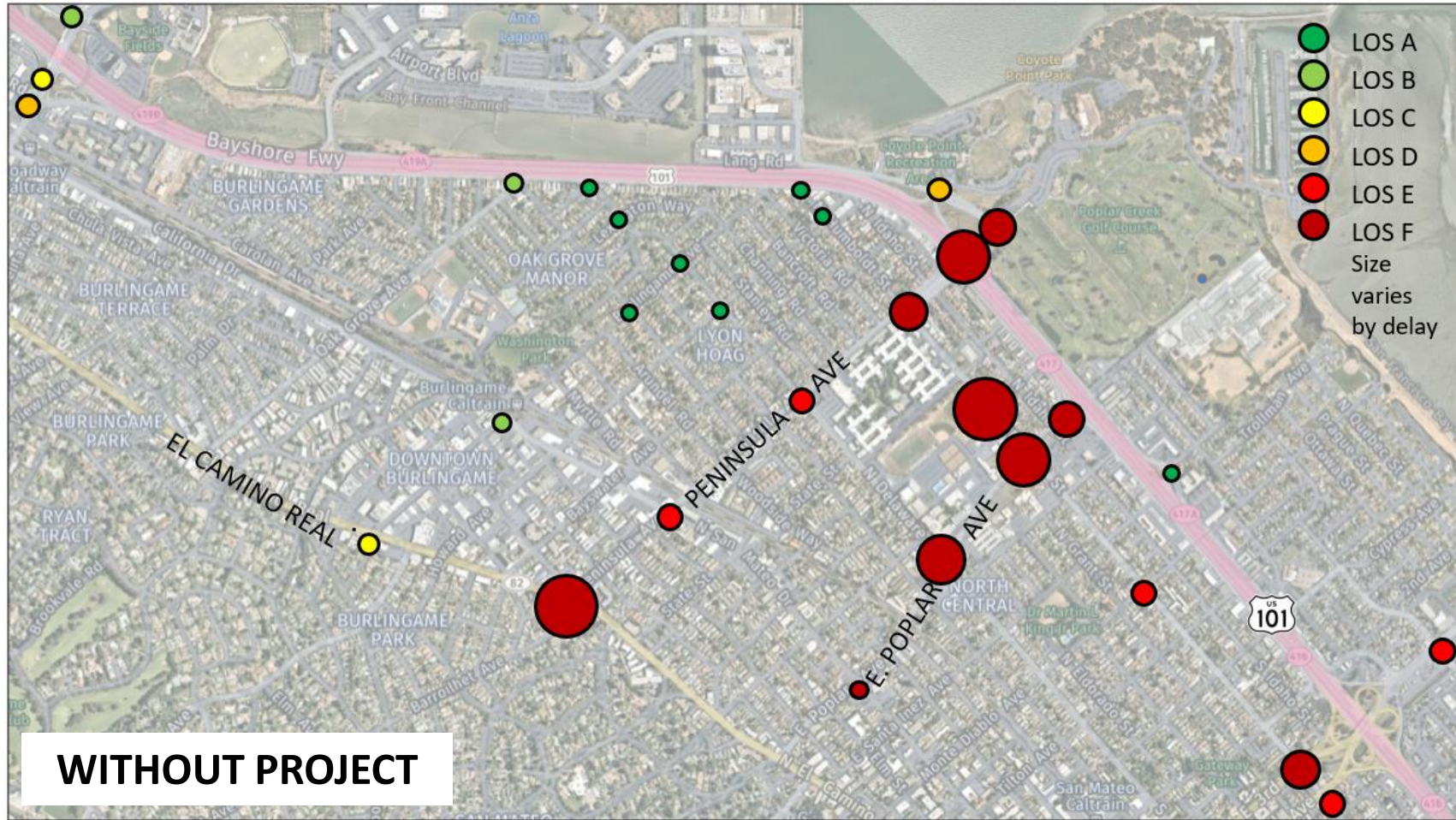
N. Humboldt St/ E. Poplar Ave



E. Poplar Ave toward US 101



2045  
AM  
PEAK





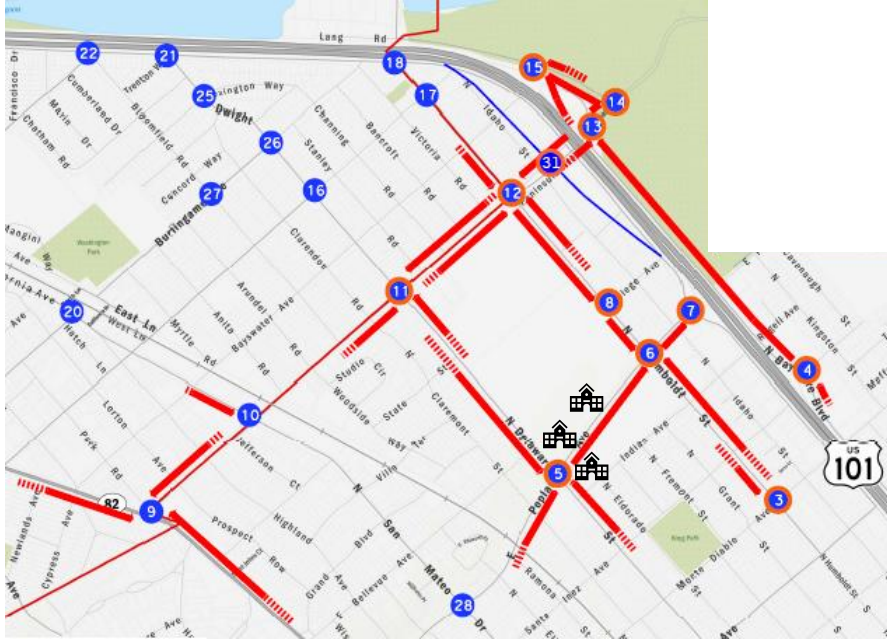
2045  
PM  
PEAK






WITHOUT PROJECT



## 2045 AM PEAK WITHOUT PROJECT






### LEGEND

-  Study Intersection
-  Study Intersection (For Local Circulation)
-  Without Project 95 Percentile Queue

## 2045 PM PEAK WITHOUT PROJECT



### LEGEND

-  Study Intersection
-  Study Intersection (For Local Circulation)
-  Without Project 95 Percentile Queue

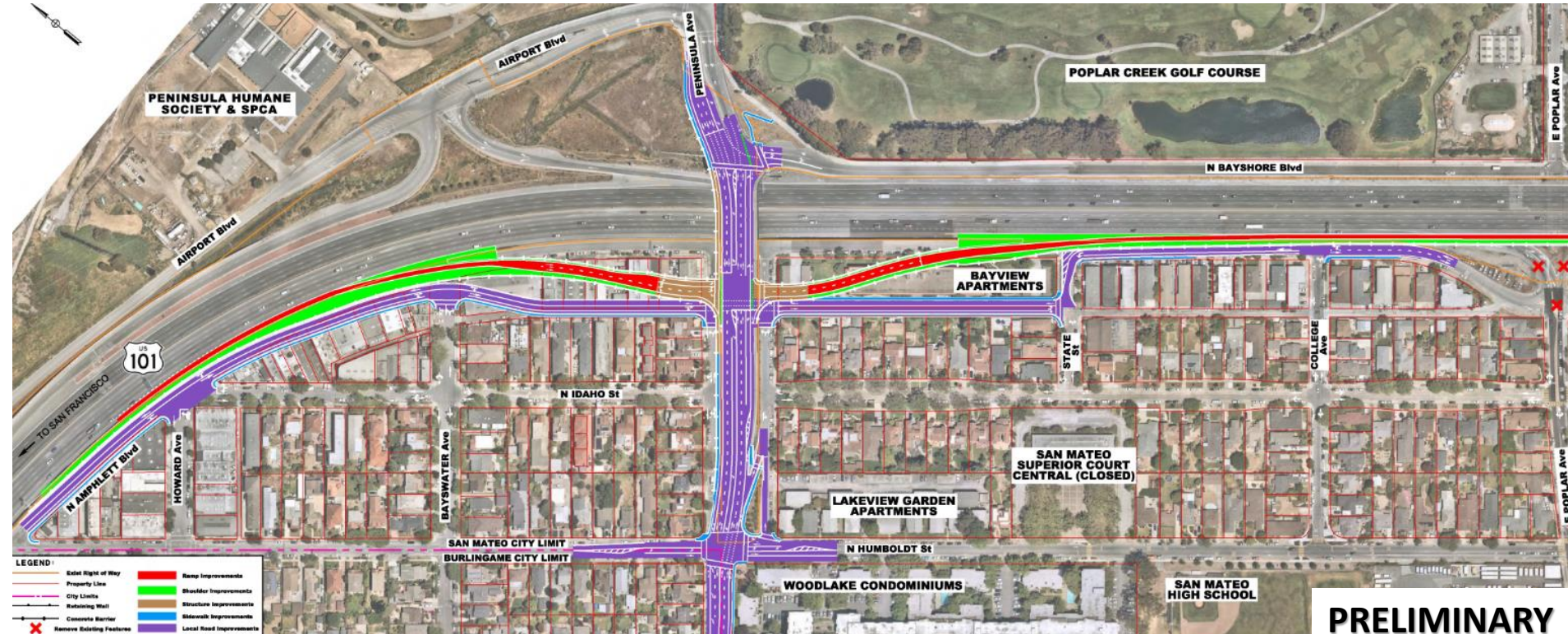


# The Long-Term Solution: U.S. Hwy 101/Peninsula Ave Interchange Project





# Spread Diamond Alternative

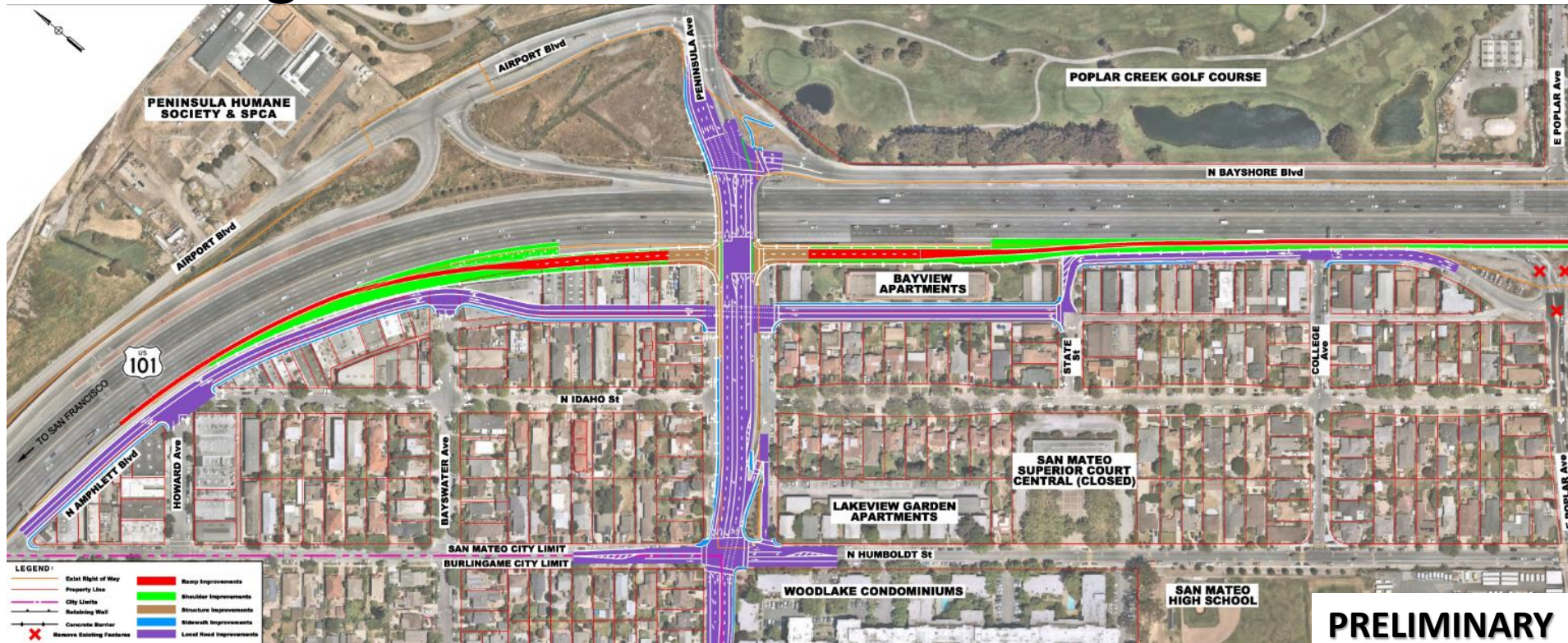


**PRELIMINARY**





# Tight Diamond Alternative

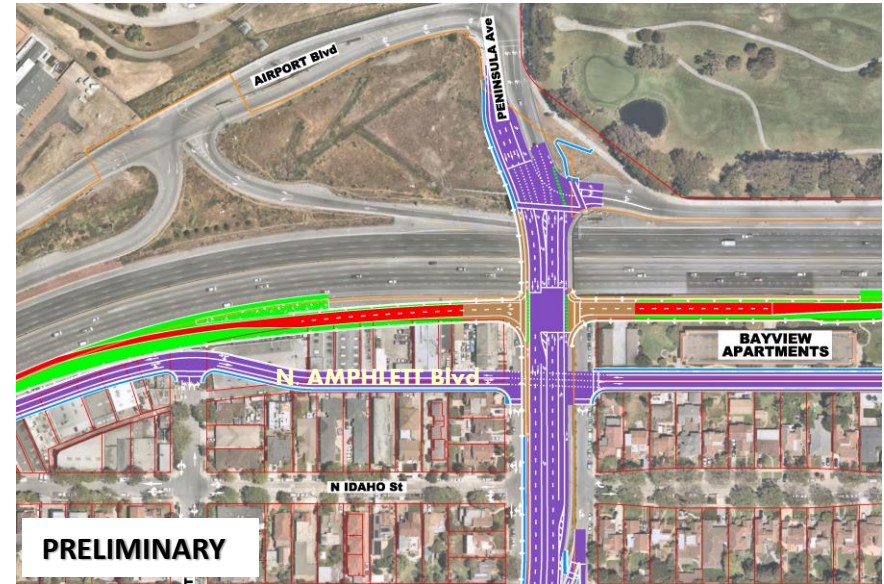
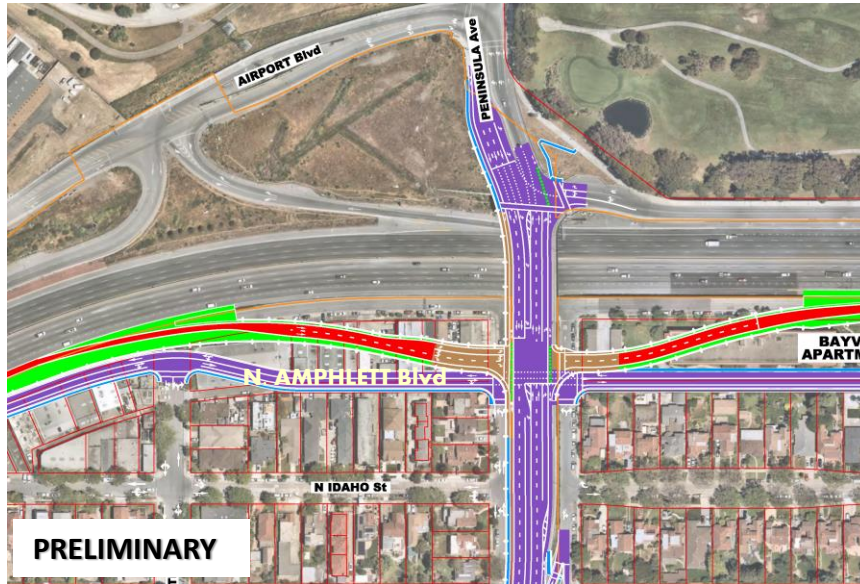




# Spread and Tight Diamond Alternatives

## Legend

- Property Line
- Retaining Wall
- Ramp Improvements
- Shoulder Improvements
- Structure Improvements
- Sidewalk Improvements
- Local Road Improvements





## Example Tight Diamond Interchange (Broadway Ave)

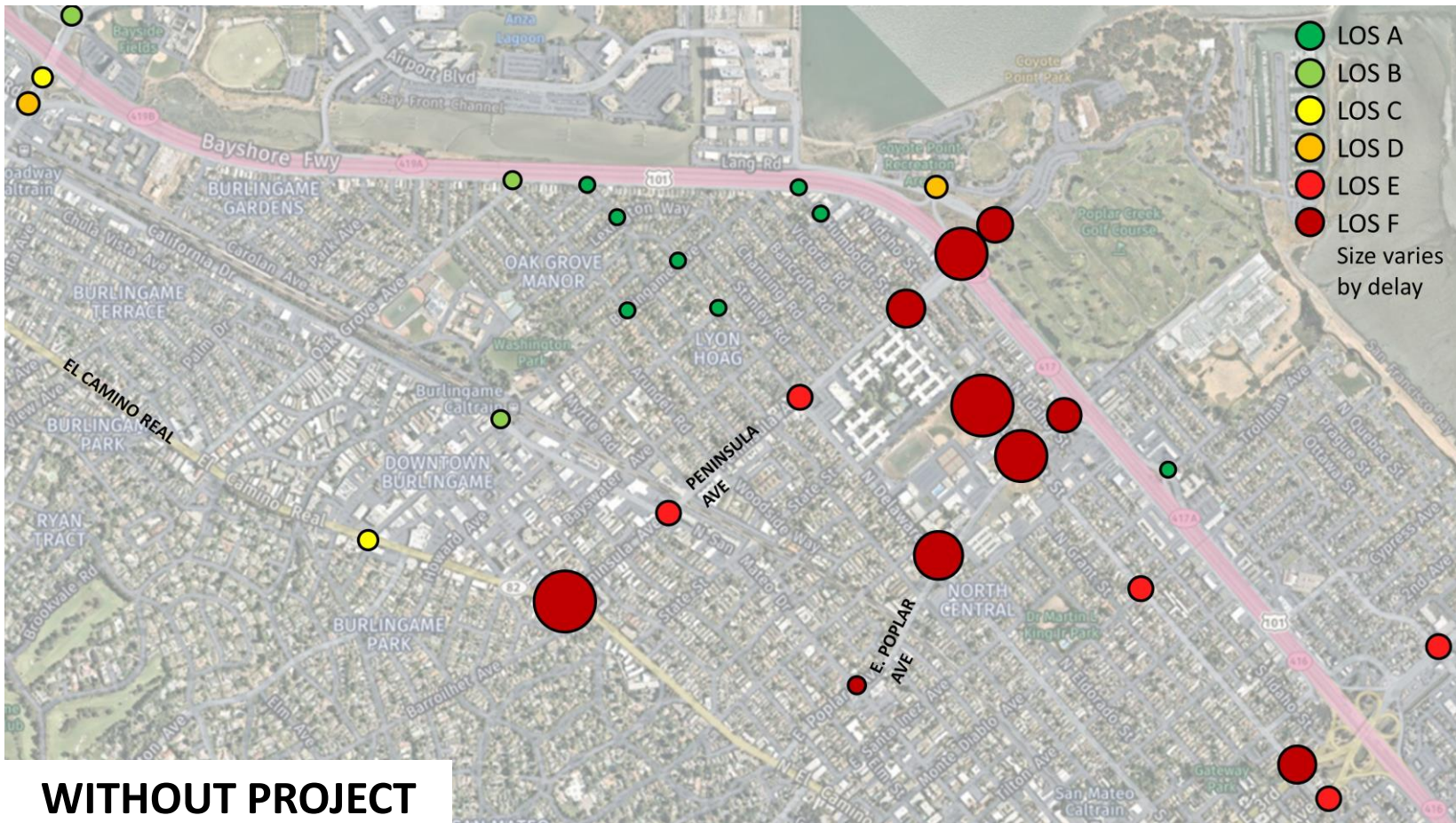


# Project Traffic Analysis



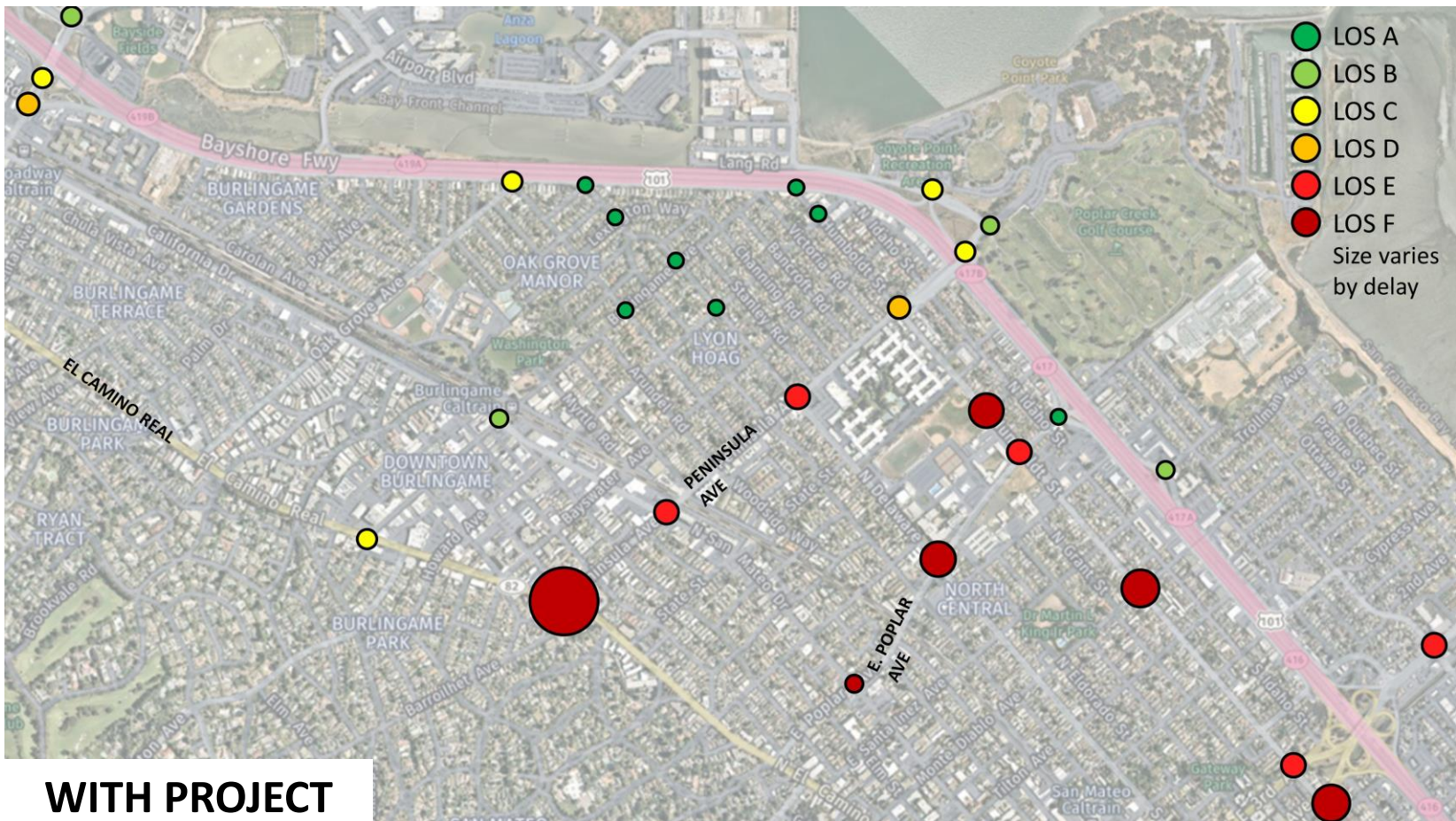


2045  
AM  
PEAK





2045  
AM  
PEAK



WITH PROJECT



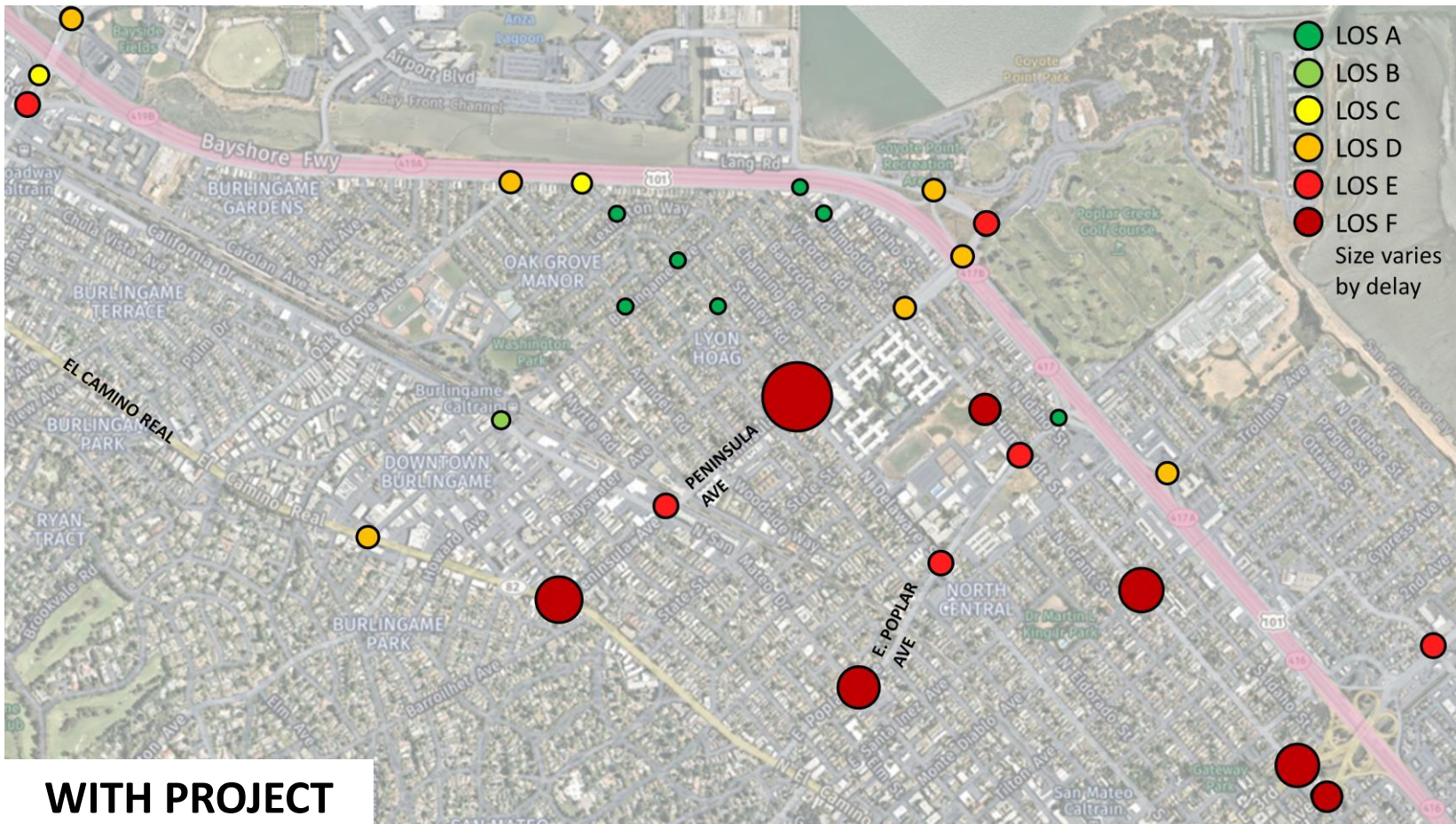


2045  
PM  
PEAK

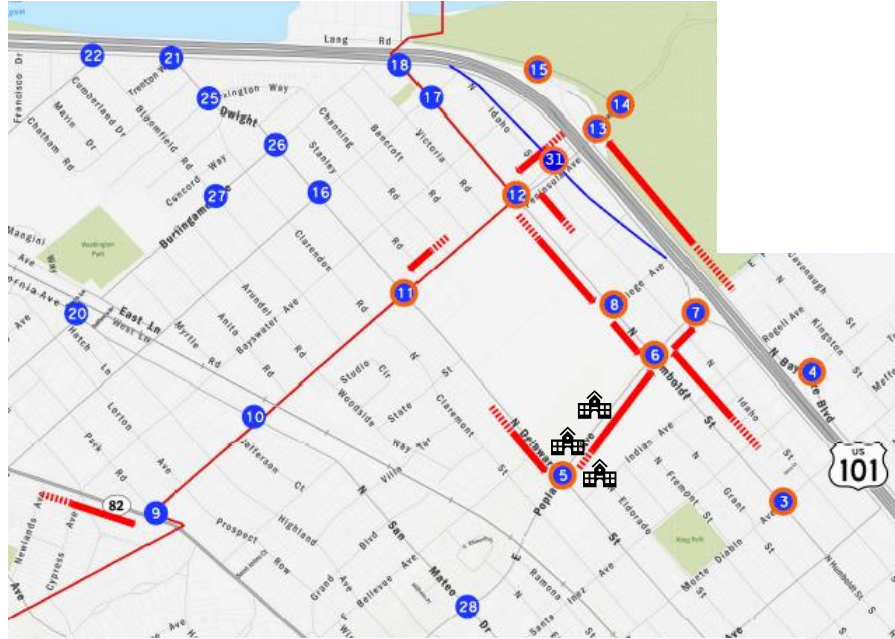







2045  
PM  
PEAK



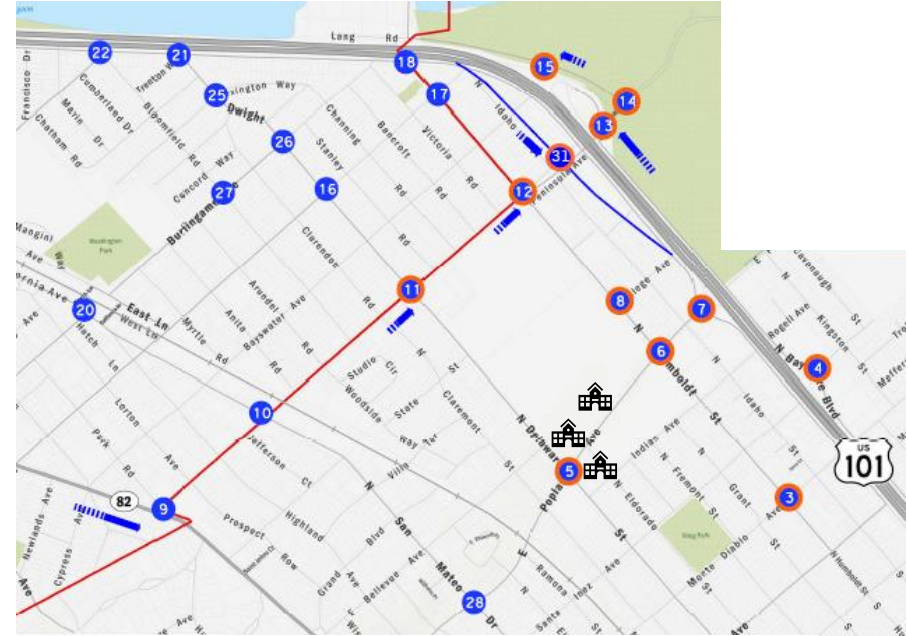
## 2025 AM PEAK WITHOUT PROJECT






### LEGEND

-  Study Intersection
-  Study Intersection (For Local Circulation)
-  Without Project 95 Percentile Queue

## 2025 AM PEAK WITH PROJECT



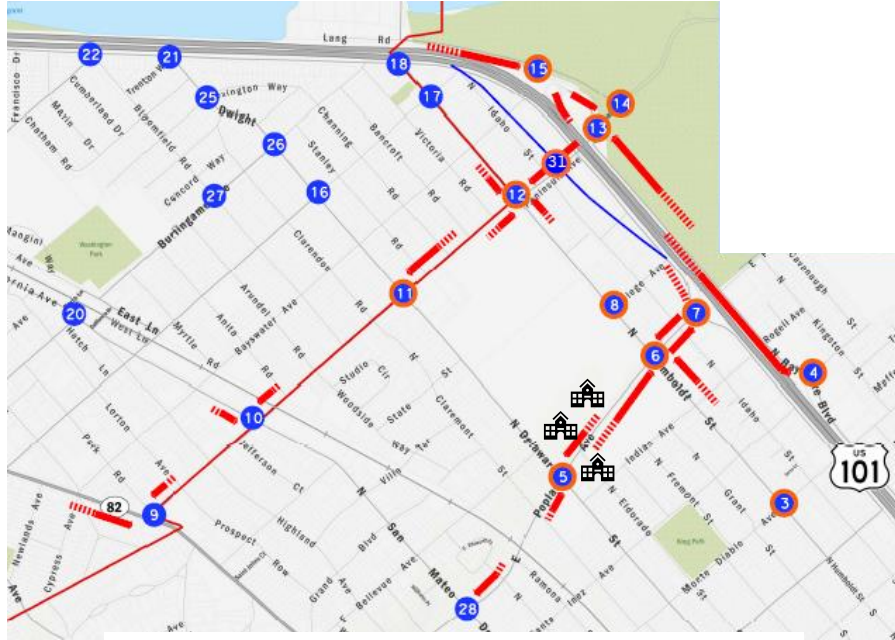
### LEGEND

-  Study Intersection
-  Study Intersection (For Local Circulation)
-  With Project 95 Percentile Queue








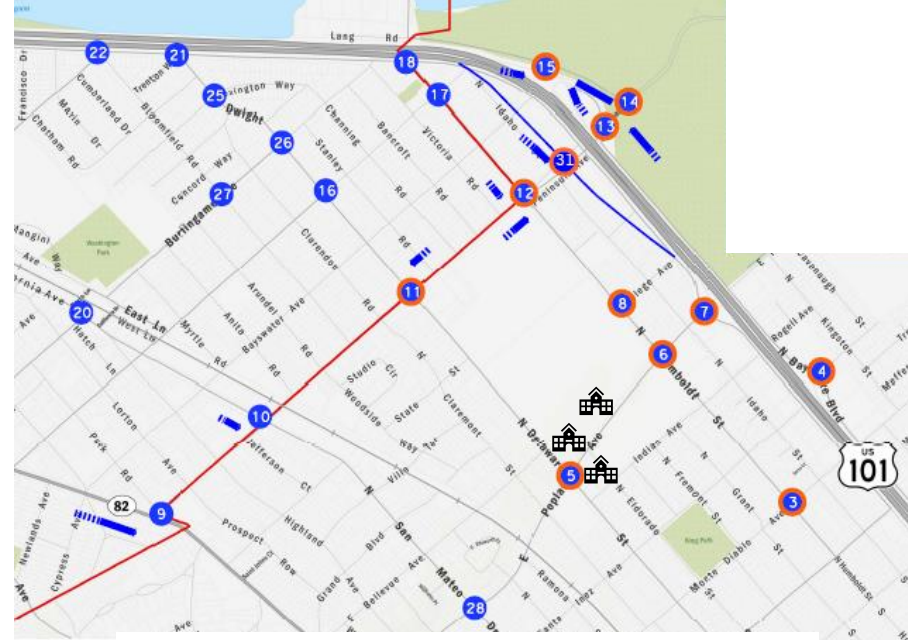
## 2025 PM PEAK WITHOUT PROJECT






### LEGEND

-  Study Intersection
-  Study Intersection (For Local Circulation)
-  Without Project 95 Percentile Queue

## 2025 PM PEAK WITH PROJECT

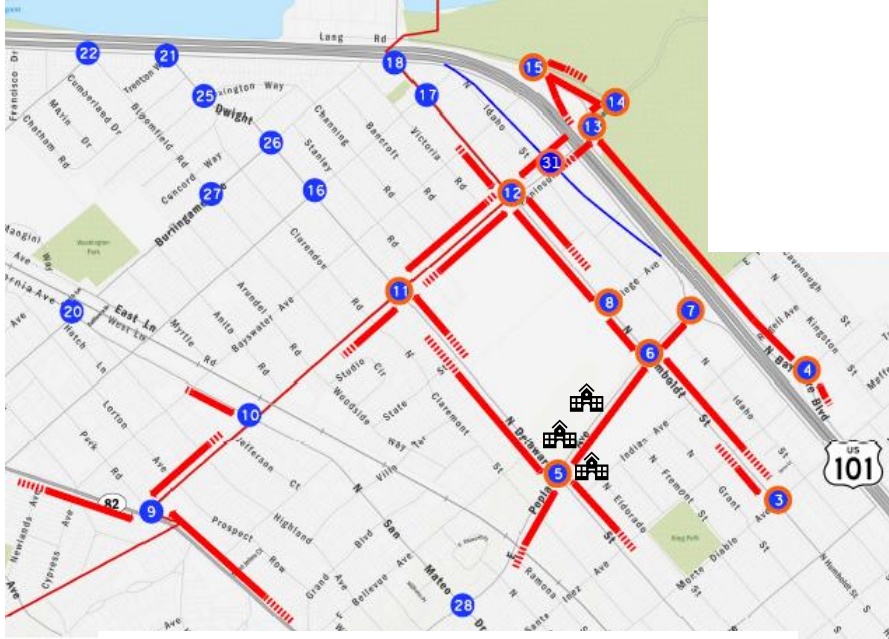


### LEGEND




-  Study Intersection
-  Study Intersection (For Local Circulation)
-  With Project 95 Percentile Queue



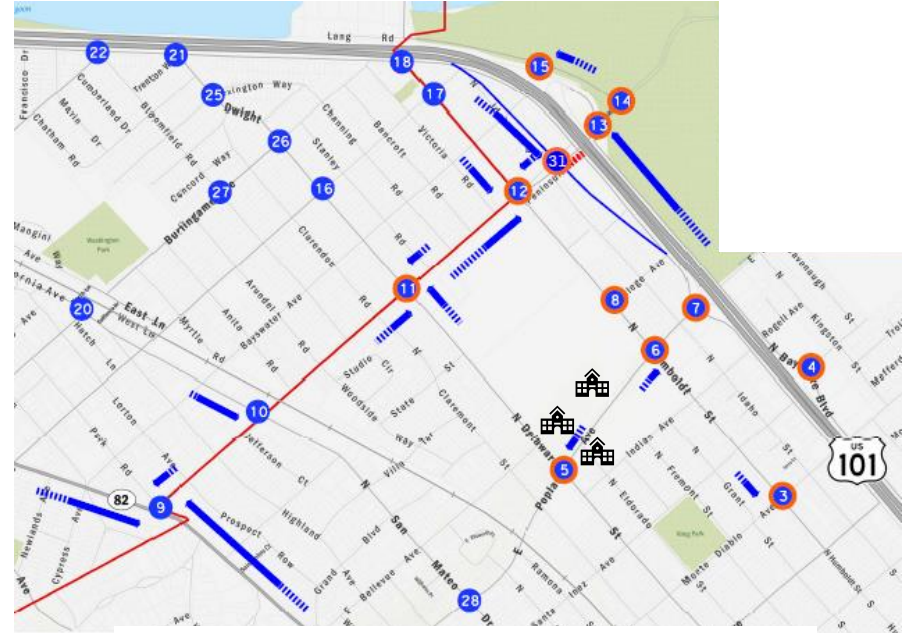
## 2045 AM PEAK WITHOUT PROJECT






### LEGEND

-  Study Intersection
-  Study Intersection (For Local Circulation)
-  Without Project 95 Percentile Queue

## 2045 AM PEAK WITHOUT PROJECT



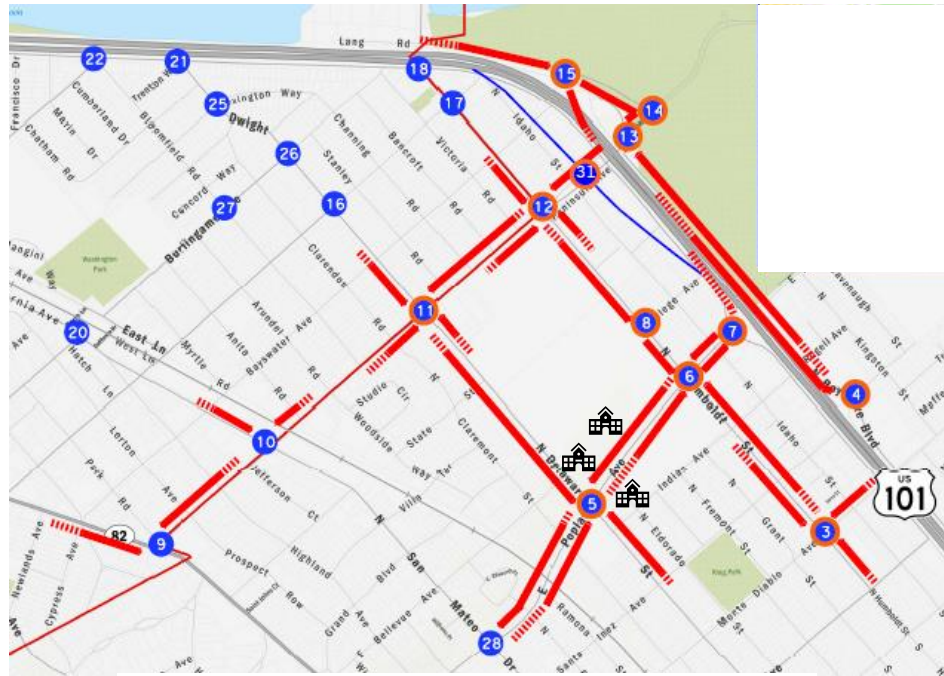
### LEGEND

-  Study Intersection
-  Study Intersection (For Local Circulation)
-  With Project 95 Percentile Queue








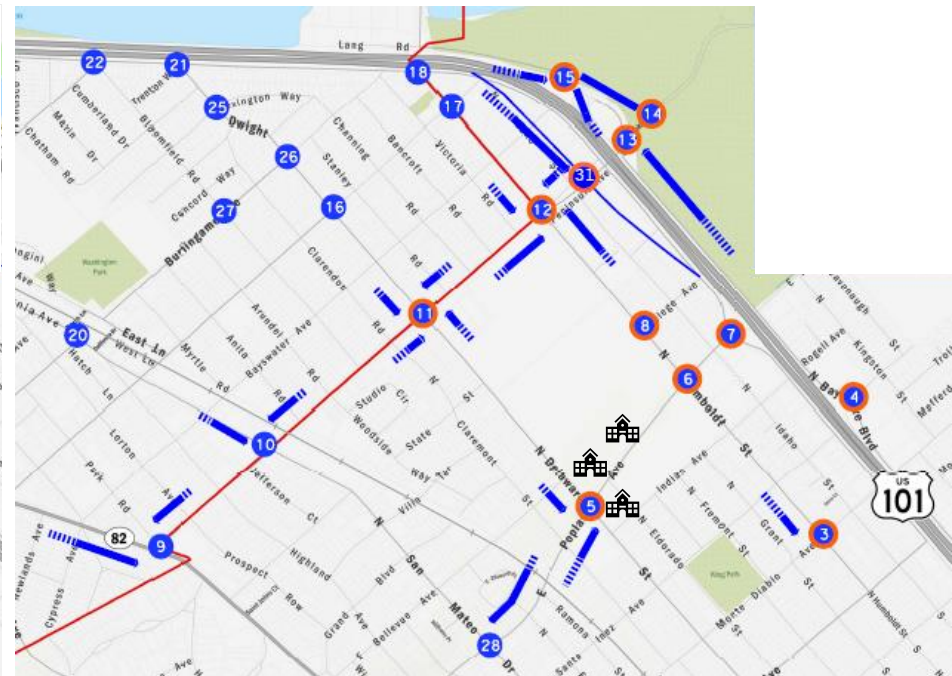
## 2045 PM PEAK WITHOUT PROJECT






### LEGEND

-  Study Intersection
-  Study Intersection (For Local Circulation)
-  Without Project 95 Percentile Queue

## 2045 PM PEAK WITH PROJECT



### LEGEND

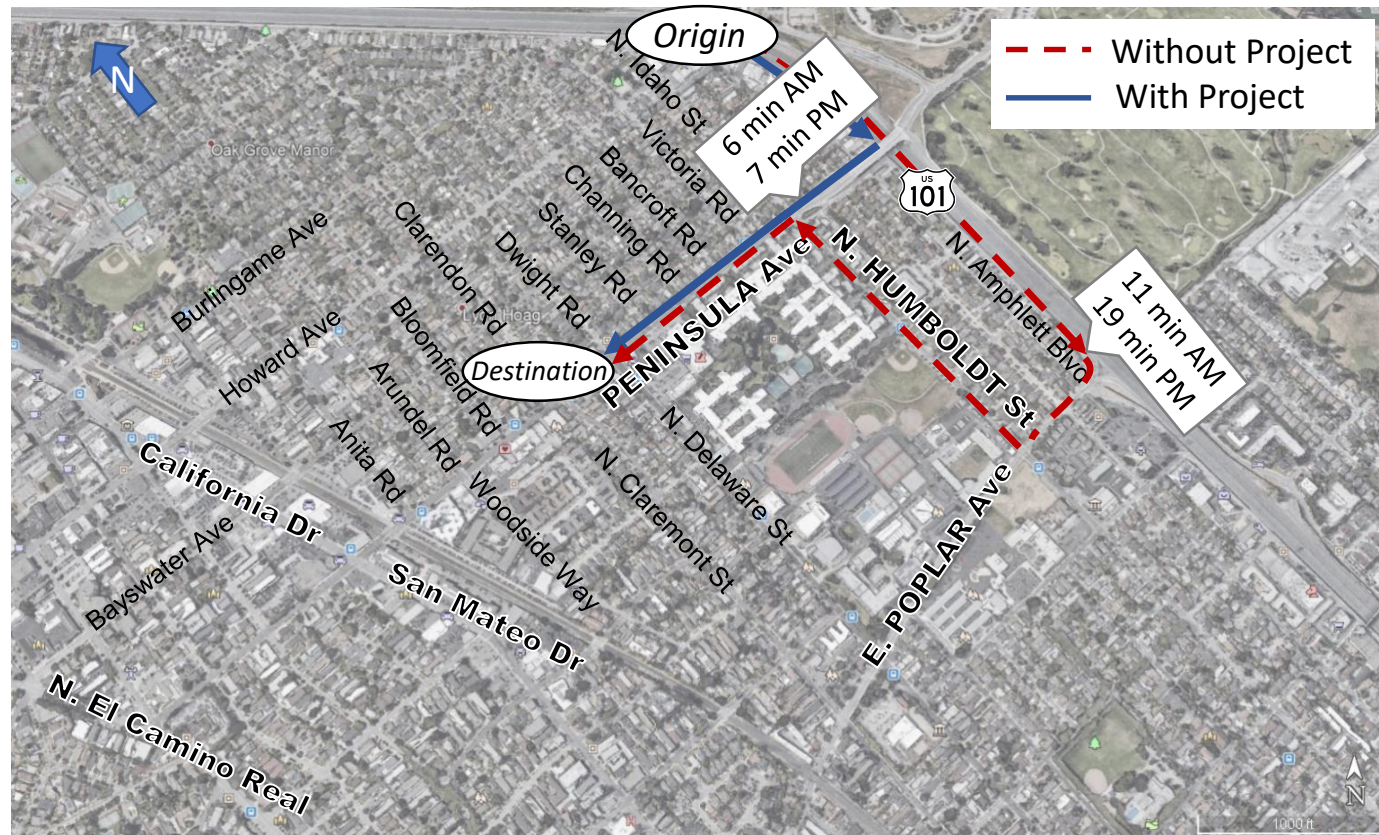
-  Study Intersection
-  Study Intersection (For Local Circulation)
-  With Project 95 Percentile Queue



## Time Savings 2045

AM – 5 minutes

PM – 12 minutes



Southbound US 101 to Peninsula/ Delaware/ Dwight



**U.S. Hwy 101/Peninsula Ave Interchange Project**

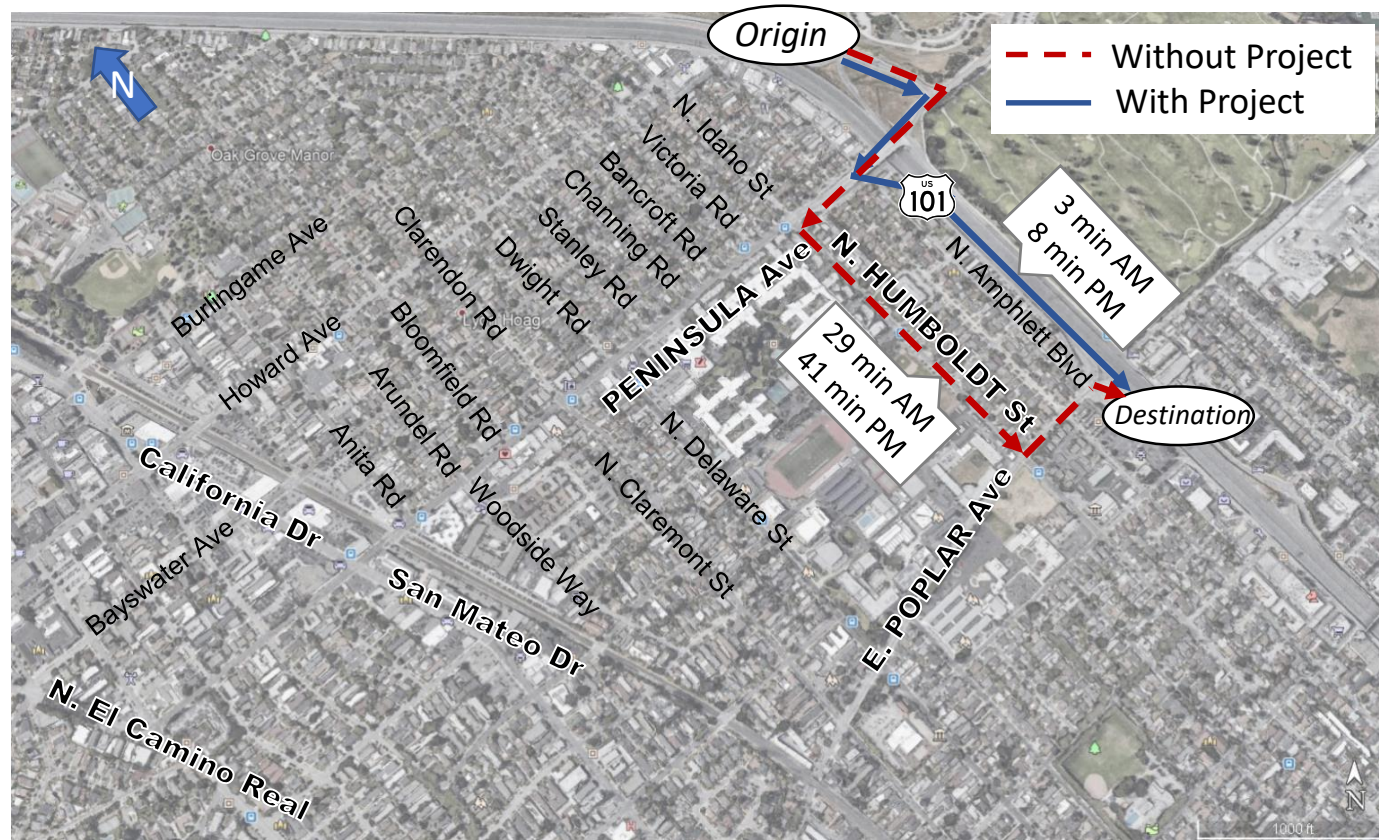
[www.CityofSanMateo.org/Peninsula](http://www.CityofSanMateo.org/Peninsula)



## Time Savings 2045

AM – 26 minutes

PM – 33 minutes



Northbound Off-Ramp/Airport Blvd to Southbound US 101



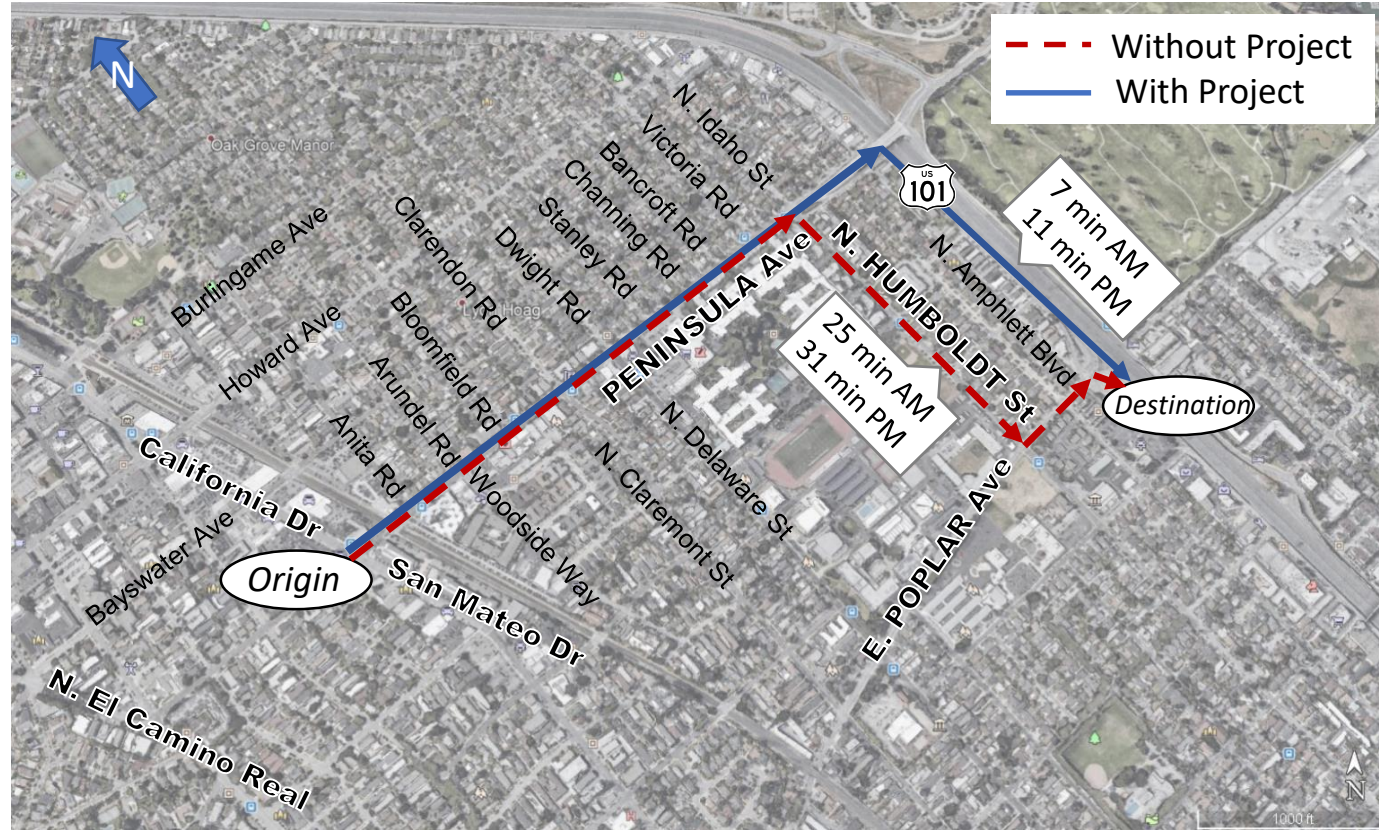
**U.S. Hwy 101/Peninsula Ave Interchange Project**

[www.CityofSanMateo.org/Peninsula](http://www.CityofSanMateo.org/Peninsula)

## Time Savings 2045

AM – 18 minutes

PM – 20 minutes



Peninsula Avenue/California Drive to Southbound US 101



**U.S. Hwy 101/Peninsula Ave Interchange Project**

[www.CityofSanMateo.org/Peninsula](http://www.CityofSanMateo.org/Peninsula)



## Time Savings 2045

### *Route A*

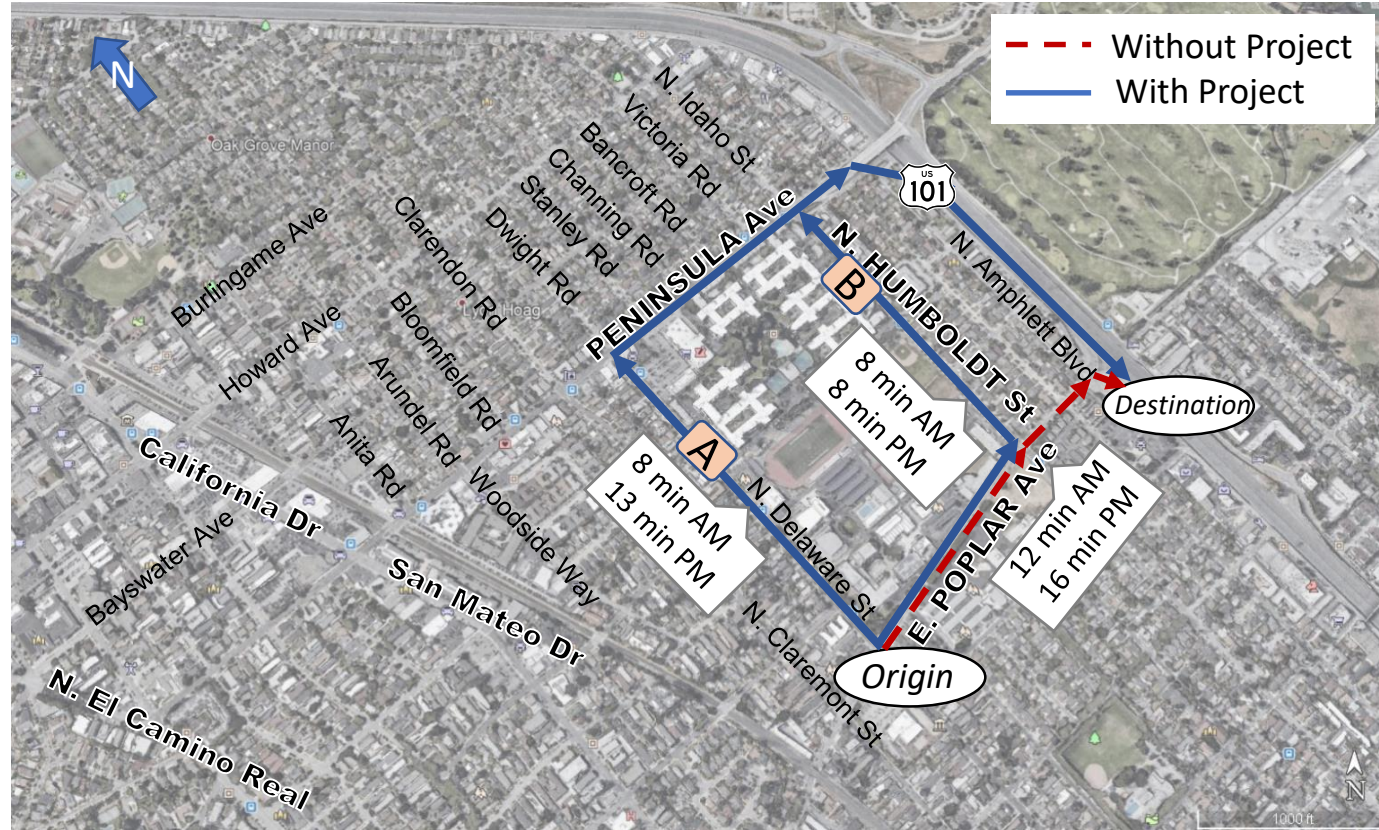
AM – 4 minutes

PM – 3 minutes

### *Route B*

AM – 4 minutes

PM – 8 minutes



Poplar Avenue/Delaware Street to Southbound US 101



**U.S. Hwy 101/Peninsula Ave Interchange Project**

[www.CityofSanMateo.org/Peninsula](http://www.CityofSanMateo.org/Peninsula)

# Proposed Project Benefits

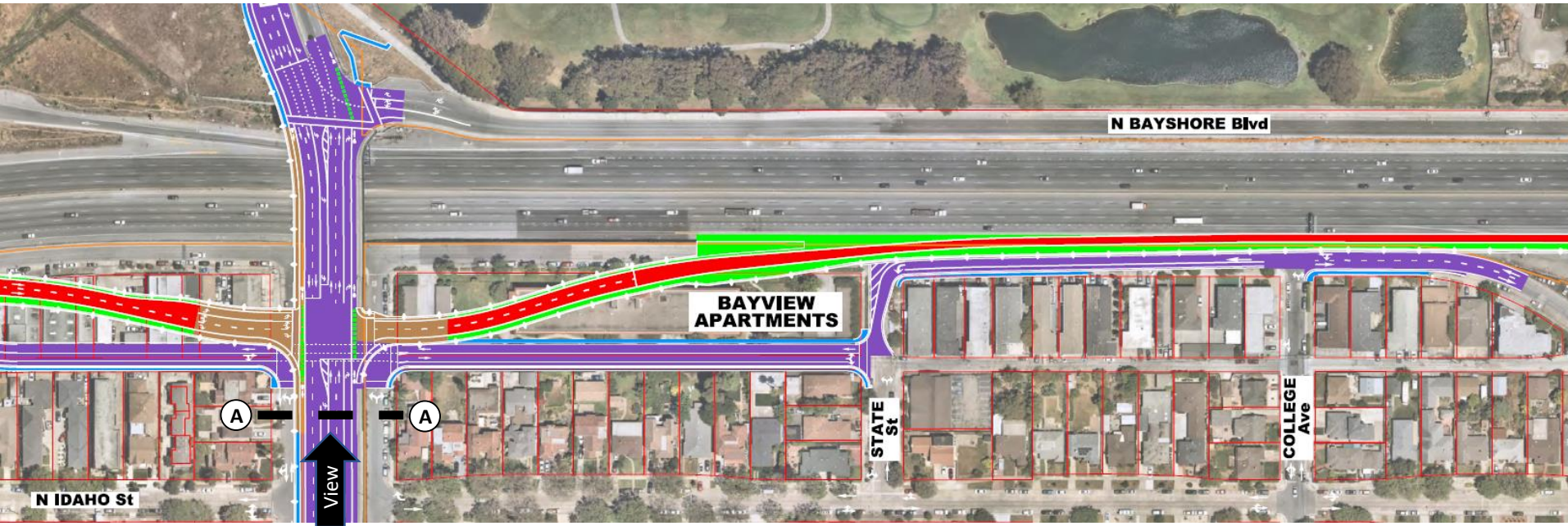
- The project would:
  - Improve safety
  - Reduce travel times
  - Improve traffic operations
  - Accommodate future traffic volumes



# Community Changes

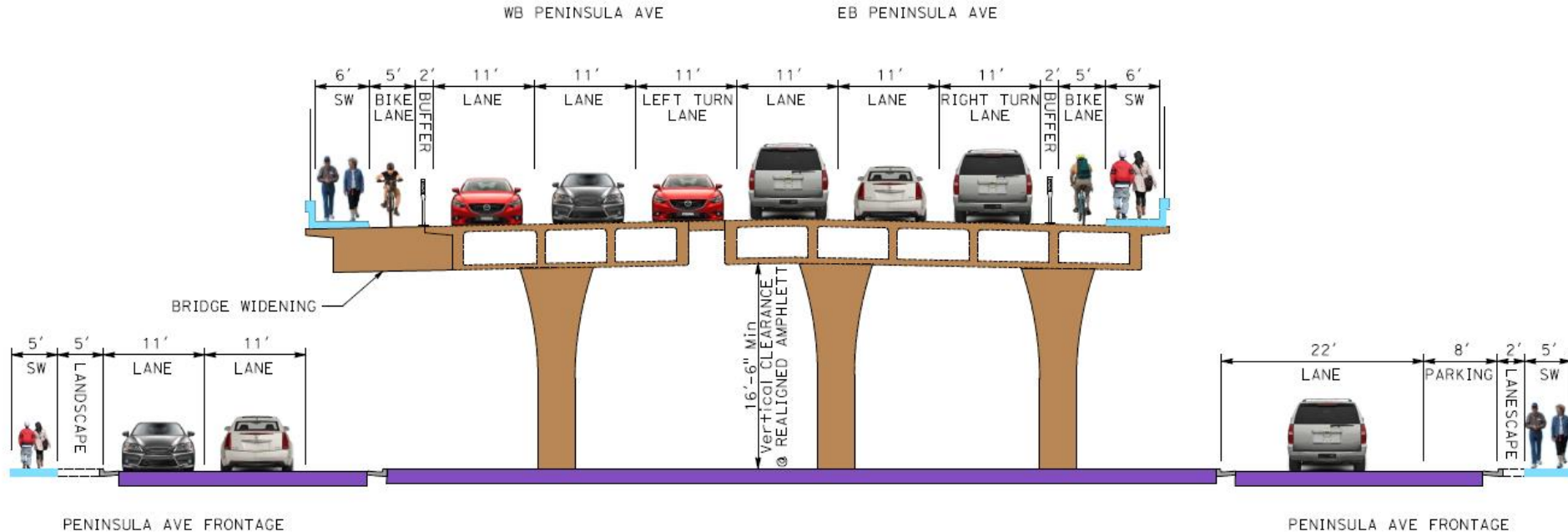


# How would the project look?





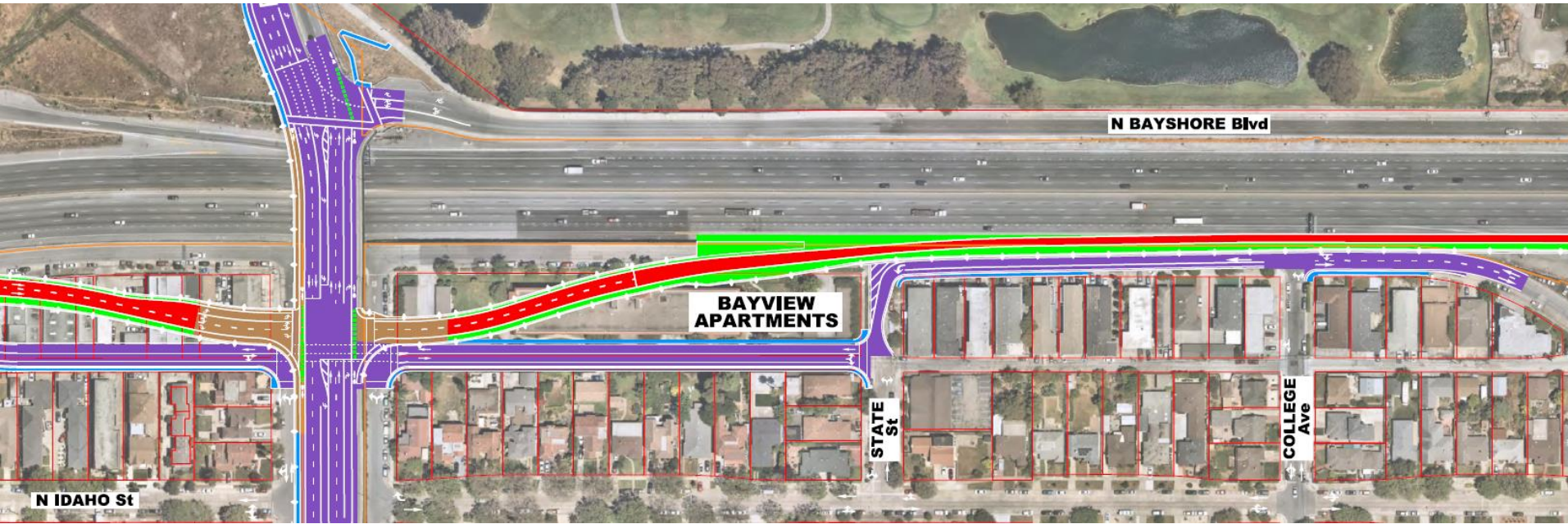
# Peninsula Avenue Overcrossing



SECTION A-A



# How would the project look?

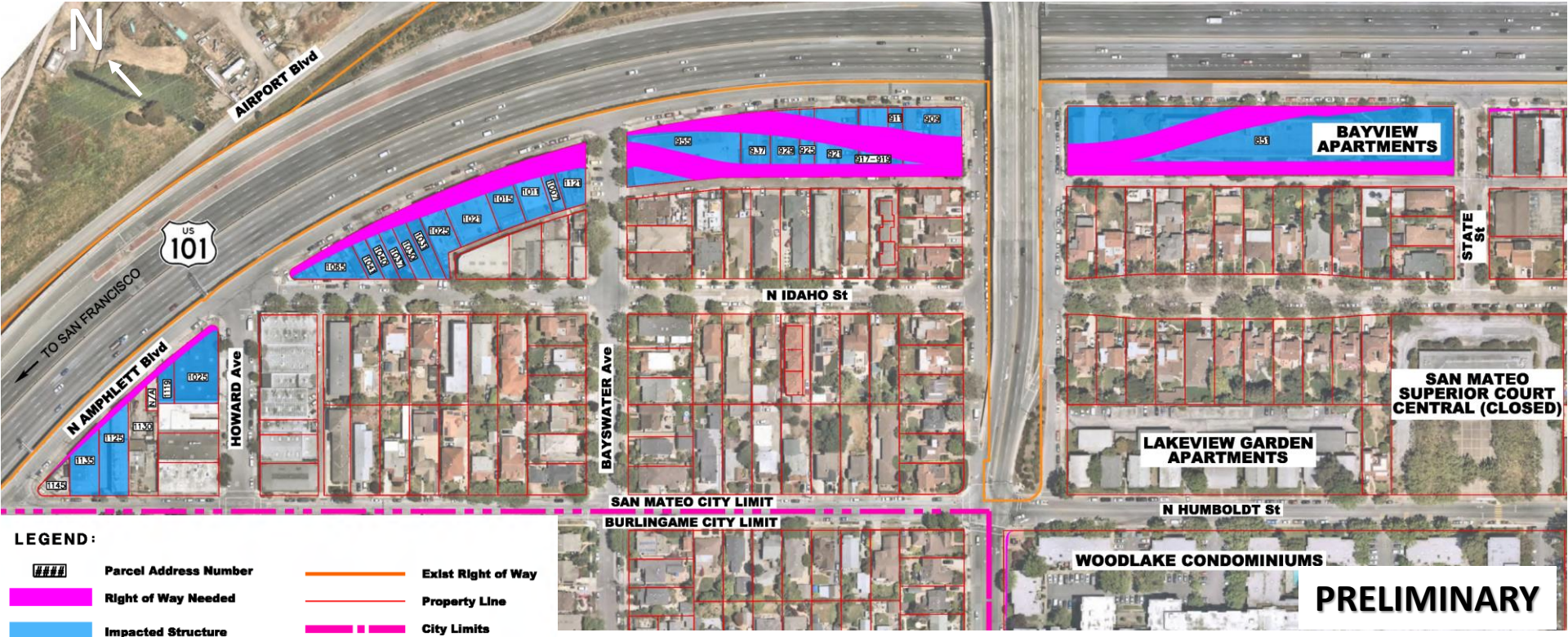


# Potential On-Street Parking Changes



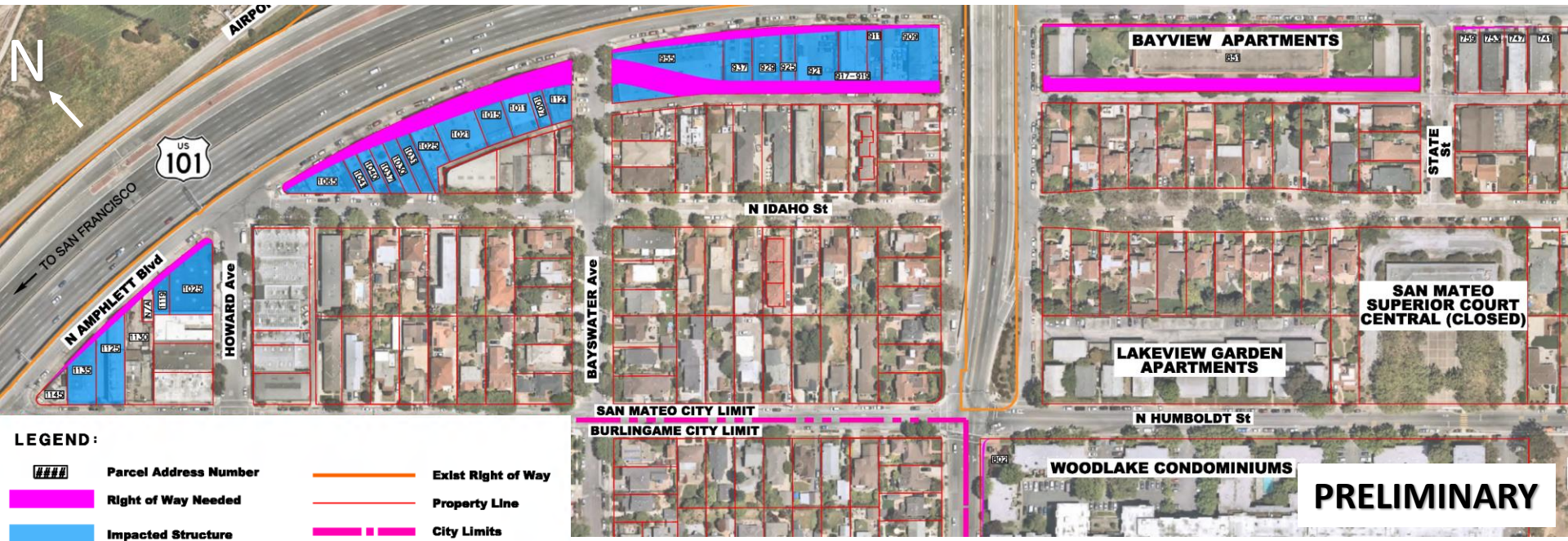


# Spread Diamond Right-of-Way Needs





# Tight Diamond Right-of-Way Needs



# Next Steps



# Moving the proposed project forward

## - **Who**

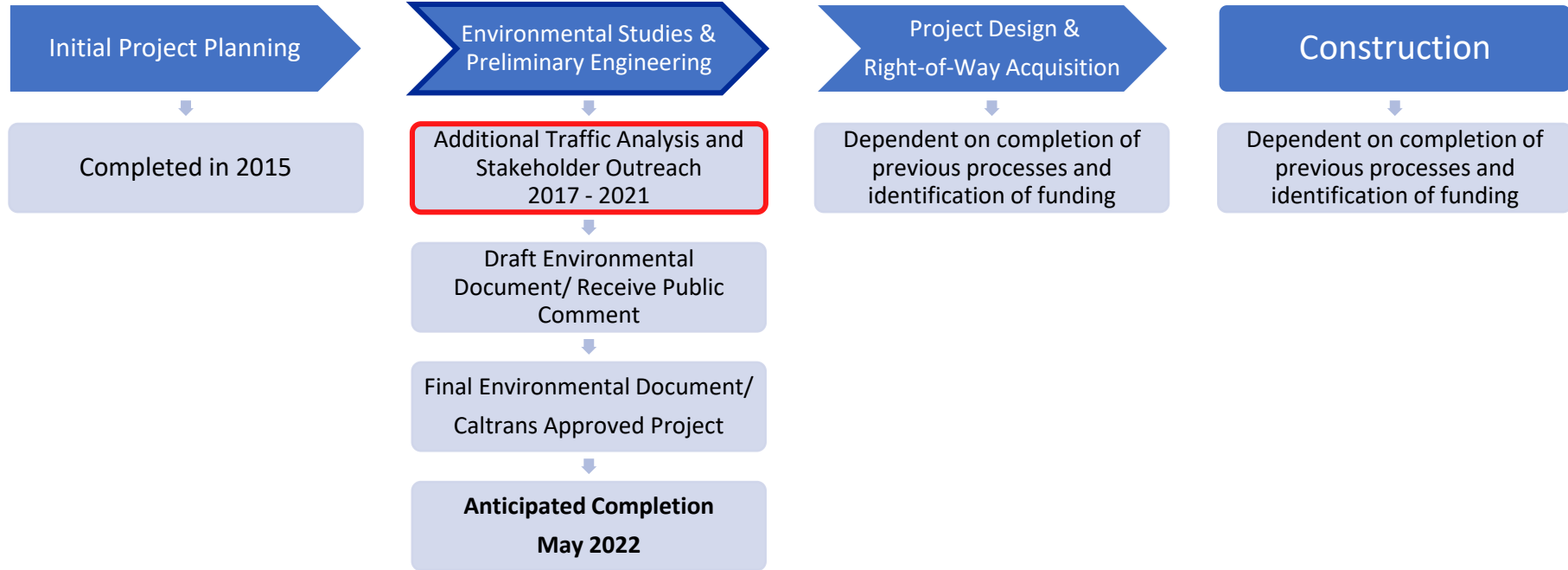
- The project team will select an alternative and approve the project
- The City of San Mateo will identify necessary funding to move forward into final design/property acquisition and construction

## - **When**

- After the environmental document has been circulated for public comment



# Project Development Process





# Topics to be studied for the environmental document

- Community Impact Assessment
  - Land Use
  - Consistency with Plans, Programs, and Policies
  - Parks and Recreation
  - Growth
  - Community Character and Cohesion
  - Relocations and Real Property Acquisition
  - Environmental Justice
- Traffic/Transportation/Pedestrian and Bicycle Facilities
- Visual/Aesthetics
- Cultural Resources
- Hydrology and Floodplain
- Water Quality and Storm Water Runoff
- Geology and Paleontology
- Air Quality
- Noise and Vibration
- Biological Resources

# Next Steps

- *Property Owner/Business Meeting January 14, 2021*
- *Stakeholder Outreach with Local Schools around Poplar January 26, 2021*
- **Community Meeting January 27, 2021**
- CEQA Scoping Meeting *Spring 2021*
- Public Meeting to review and comment on the draft environmental document *Late 2021/Early 2022*
- Environmental Document / Project Approval by Caltrans *Summer 2022*



# Q&A

- Please raise your hand to ask a question.
- Questions will be answered orally in the order received.
- This meeting is being recorded and will be available for anyone who has missed the meeting.





# Thank You

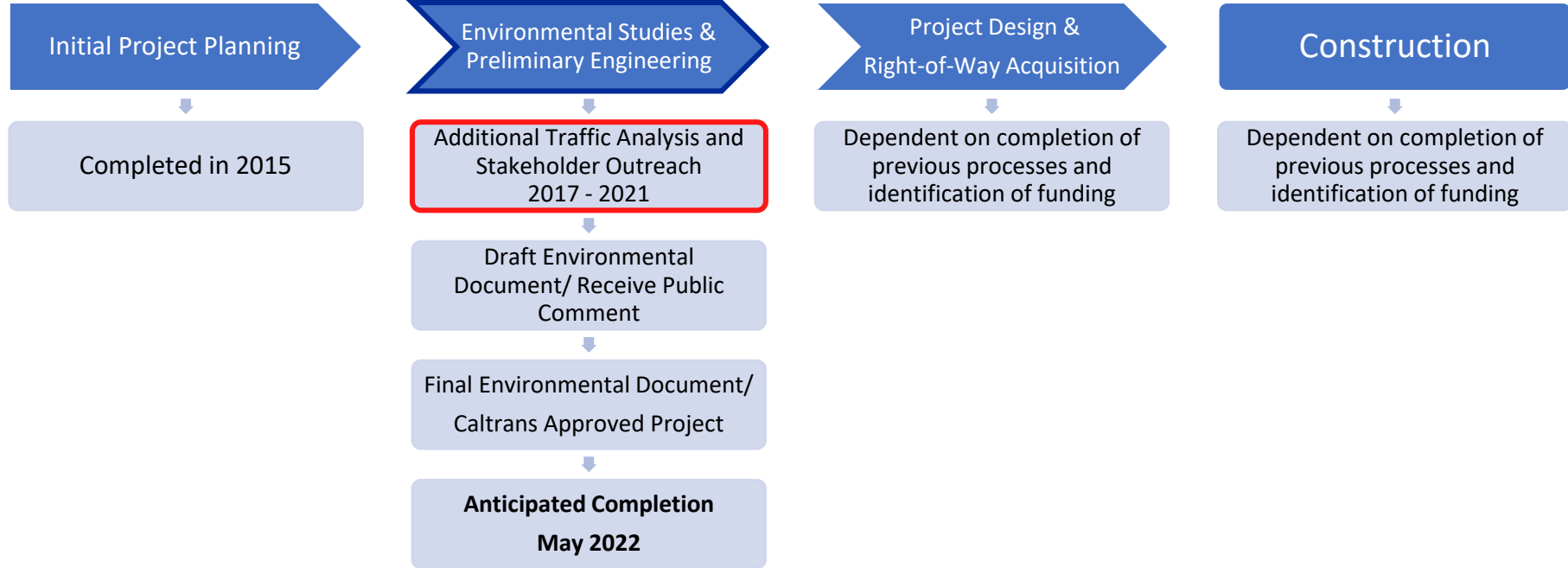
Follow the proposed project at:  
*[www.CityofSanMateo.org/Peninsula](http://www.CityofSanMateo.org/Peninsula)*



# Proposed Project Location



# Project Development Process





# Topics to be studied for the environmental document

- Community Impact Assessment
  - Land Use
  - Consistency with Plans, Programs, and Policies
  - Parks and Recreation
  - Growth
  - Community Character and Cohesion
  - Relocations and Real Property Acquisition
  - Environmental Justice
- Traffic/Transportation/Pedestrian and Bicycle Facilities
- Visual/Aesthetics
- Cultural Resources
- Hydrology and Floodplain
- Water Quality and Storm Water Runoff
- Geology and Paleontology
- Air Quality
- Noise and Vibration
- Biological Resources

