

# 1

## INTRODUCTION

The North Central San Mateo Community-Based Transportation Plan (CBTP) examines the transportation needs of the North Central community the City of San Mateo and recommends steps to address these needs. This project is part of the Metropolitan Transportation Commission's (MTC) Community-Based Planning Program, a collaborative planning process to identify transportation needs in low-income communities throughout the region. The program began in 2001 after MTC completed two reports on the transportation needs of disadvantaged communities - the "Lifeline Transportation Network Report" and the "Environmental Justice Report." The Lifeline Report identified travel needs in low-income communities and recommended community-based transportation planning as a way for communities to set priorities and evaluate options for filling transportation gaps.

The MTC Lifeline Transportation Planning Program objectives include:

- Target planning efforts in low income communities;

- Facilitate community participation in prioritizing transportation needs and identify potential solutions;
- Cultivate collaboration between the community, transit agencies, congestion management agencies and MTC; and
- Build community capacity through Community Based Organization involvement in the planning process.

Using the Lifeline Report as a starting point, this CBTP identifies transportation gaps within the North Central San Mateo neighborhood, and recommends projects to address them.

In accordance with MTC guidelines, this CBTP is being conducted with support from the San Mateo City/County Association of Governments (C/CAG), in its role as the Congestion Management Agency for the county. C/CAG selected the San Mateo County Transit District (SamTrans) to conduct the planning process for the North Central San Mateo CBTP.

## PLANNING PROCESS

The community-based planning process is a collaborative effort involving extensive community and stakeholder involvement at every stage of the planning process. A *Technical Advisory Committee* comprised of staff representing the City of San Mateo, the San Mateo County Human Services Agency (HSA), C/CAG, MTC, and SamTrans was formed to oversee the process. Additionally, a *Stakeholder Committee*, comprised of North Central San Mateo residents, community based organizations, and stakeholders, was appointed by City staff and provided input throughout the planning process.

## OVERVIEW OF THE PLAN

*Chapter 1* provides an overview of the plan, its purpose, and a description of the project area.

*Chapter 2* contains a summary of existing conditions of the North Central San Mateo CBTP project area. These include information about demographics, transportation, and other planning efforts that affect the area.

*Chapter 3* explains the community outreach process and presents the results. This chapter also contains a list of stated transportation needs and potential solutions which emerged from the outreach findings.

*Chapter 4* contains a program of fourteen transportation strategies to address the transportation needs identified through the outreach process. The strategy descriptions each contain:

- Transportation need addressed;
- Project description;
- Potential transportation and community impacts;
- Implementation requirements; and
- Potential funding and cost estimate.

*Chapter 5* contains an action plan which outlines some suggested next steps for successful implementation of the strategies outlined in Chapter 4.

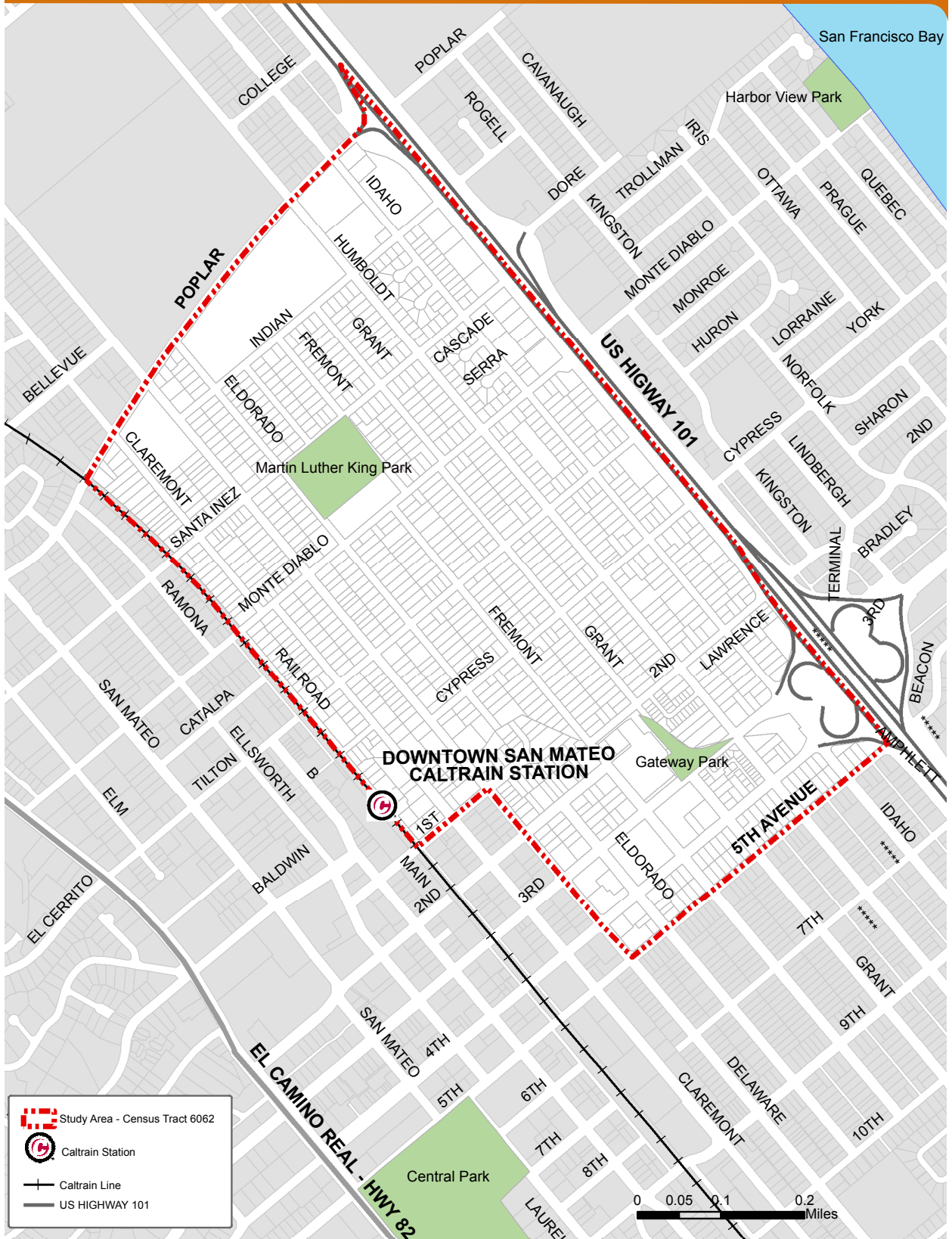
The Plan document includes several acronyms for agencies and planning terms. The following list provides a key to acronyms used in the Plan.

- BAAQMD – Bay Area Air Quality Management District
- CBO – Community Based Organization
- CBTP – Community Based Transportation Plan
- C/CAG – San Mateo City/County Association of Governments
- HSA – San Mateo County Human Services Agency
- MTC – Metropolitan Transportation Commission
- TOD – Transportation Oriented Development
- The Alliance and Commute.org – Peninsula Traffic Congestion Relief Alliance

## PROJECT AREA

The City of San Mateo is located in central San Mateo County. The project area is located in the northern part of the City, and is bordered to the north by Poplar Avenue and U.S. Highway 101, and to the south by the Caltrain railroad tracks, 1<sup>st</sup> Avenue, Delaware Street, and 5<sup>th</sup> Avenue. The project area for this plan was defined in consultation with the City of San Mateo and includes U.S. Census Tract 6062 as shown in the maps below.

Map 1: Project Area



This page intentionally left blank.