



# NEIGHBORHOOD TRAFFIC FORUMS

**FORUM #9**  
**MAY 12, 2016**

# TONIGHT'S AGENDA

1. Welcome & Introductions
2. Overview
3. Breakout Session
4. Tables Report Out
5. Next Steps



# QUALITY OF LIFE



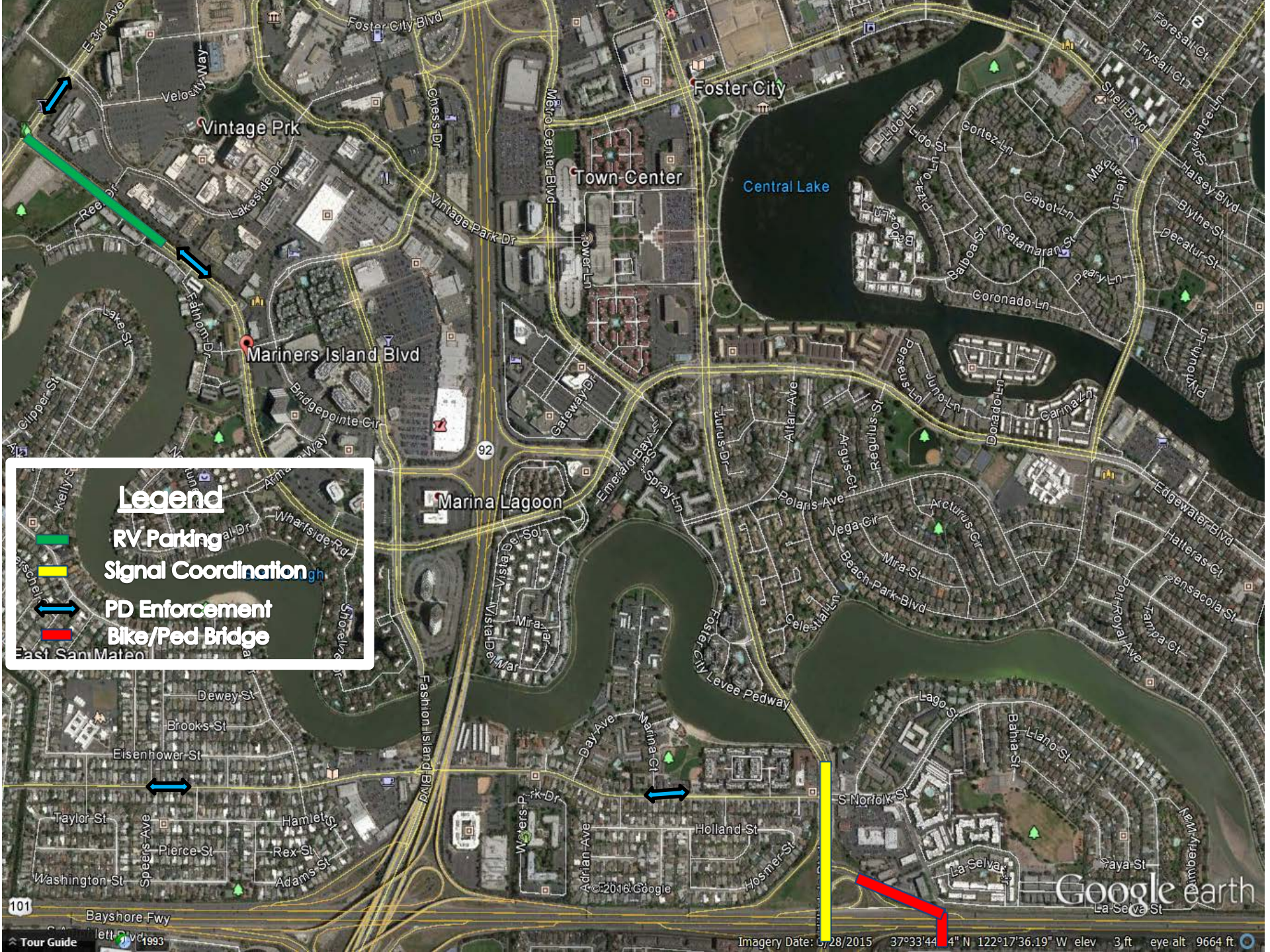
# CHALLENGES

- Neighborhood agreement to solutions
- Issues beyond our control - regional & state
- Meets the needs of entire San Mateo community
- Timeliness of response - Regulatory requirements
- Expensive solutions

# CURRENT NEIGHBORHOOD EFFORTS

- Addressed RV parking on Mariners Island
- Ongoing speeding enforcement of:
  - S. Norfolk, E. 3<sup>rd</sup>, Mariners Island Blvd
- Reviewing the signal timing along the Hillsdale corridor
- Improving bike/ped connection with the installation of the Hillsdale Bridge





## Legend

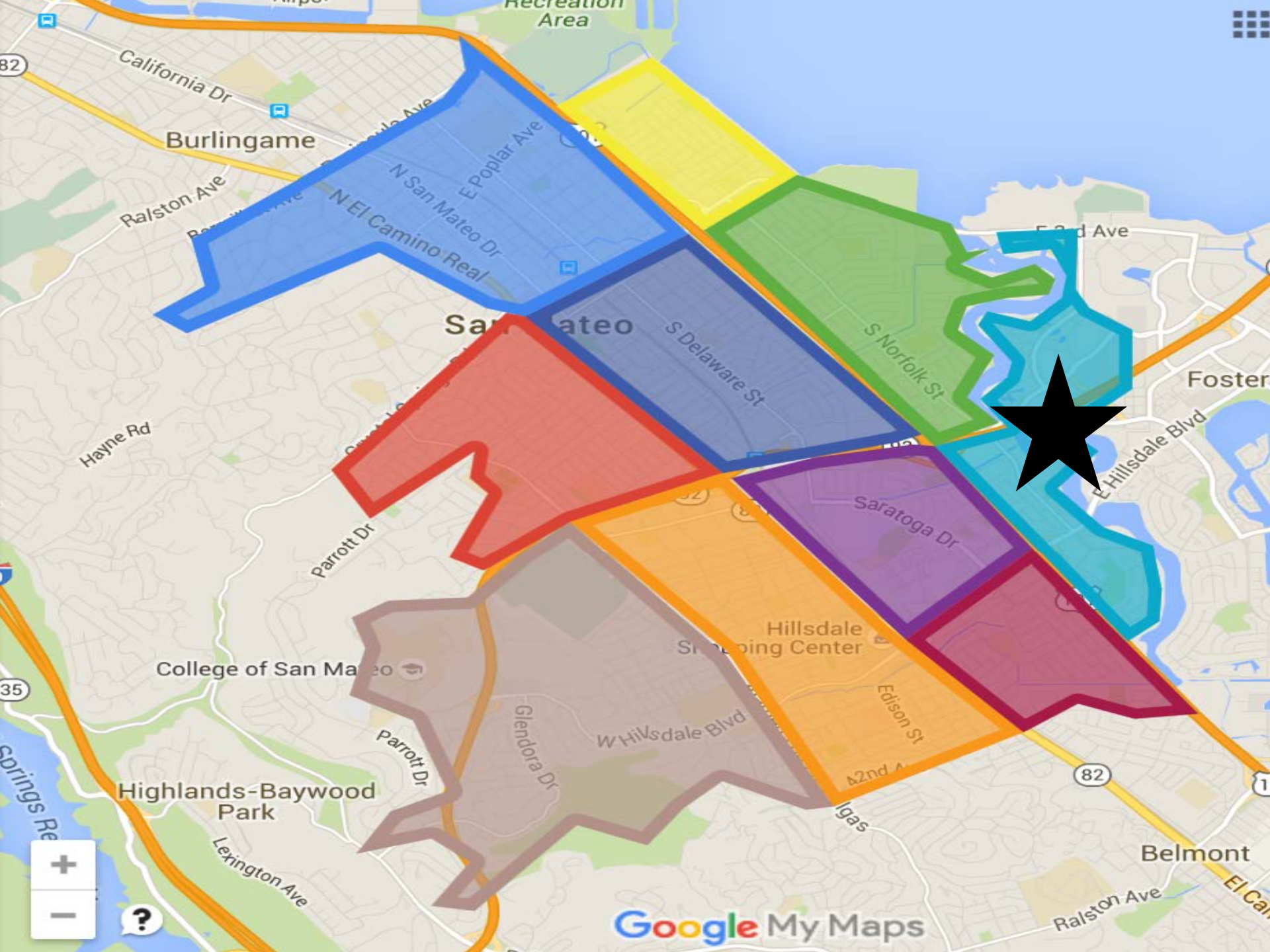
- RV Parking
- Signal Coordination
- PD Enforcement
- Bike/Ped Bridge



# LOCAL & REGIONAL STUDIES/PROJECTS

1. SR-92 Improvements (I-280 to SM Bridge) Study
2. US-101 Mid-County Improvements Study
3. Peninsula Ave Interchange
4. SR-92/El Camino Real Interchange
5. Railroad Grade Separations at 25th, 28th and 31<sup>st</sup>
6. 20th/El Camino Real Right Turn Lane

For more information, please see separate project sheet available.





# BREAK-OUT SESSION

1. Comments by table
2. Facilitators will:
  - a. Solicit comments from each person
  - b. List all issues on flip chart
3. Participants will:
  - a. Share specific traffic interests (location, time, etc.)
  - b. Maps are for reference only
  - c. One speaker at a time
  - d. Be respectful and courteous
  - e. Share the airtime
  - f. All comments/suggestions are valid
  - g. Identify top 3 concerns of group

# FURTHER DEVELOPING NEIGHBORHOOD PRIORITIES

1. Identify neighborhood Traffic Forum Steering Committee (TFSC)
  - HOA members
  - Neighborhood volunteers
2. Discuss at table
3. Sign up Sheet at end of meeting

# REPORT OUT

1. Report out one top interest table by table
2. No duplicates
3. Continue around the room for top 3





# STAY CONNECTED

- [www.cityofsanmateo.org/traffic](http://www.cityofsanmateo.org/traffic)
- Sign in sheets at entrance
- Ongoing changes and new technologies

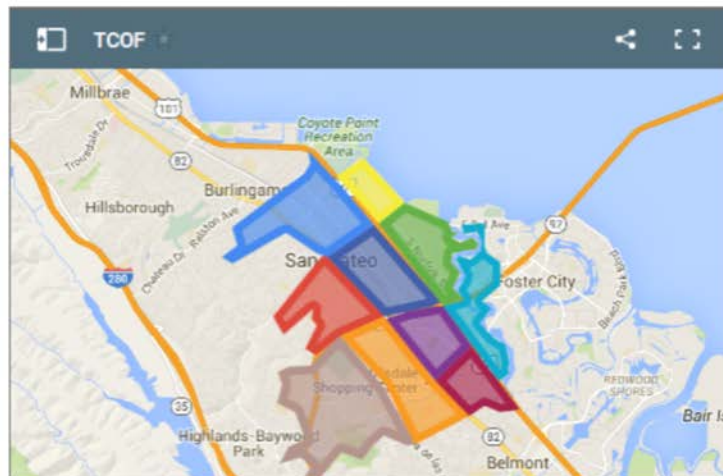
## Neighborhood Traffic Forums

Through the end of May 2016, Public Works will be holding a series of bi-weekly public forums to gather feedback and suggestions from the community regarding traffic concerns throughout the City.

### Participate Online!

San Mateo wants to make sure to hear from all residents. If you can't make a meeting or prefer to provide comments electronically, [click here](#) to provide your traffic concerns.

Below is a map of the ten neighborhood areas Public Works plans to hold meetings. Click on any colored area to get details:



**Email  
Alerts**  
Get Notified

## Calendar SEE MORE

- Thu, Mar. 10**  
[Traffic Forum #5: Beresford Elementary](#)
- Thu, Mar. 24**  
[Traffic Forum #6: Poplar Creek Golf Course](#)
- Thu, Apr. 14**  
[Traffic Forum #7: Hillsdale High School Cafeteria](#)
- Thu, Apr. 28**  
[Traffic Forum #8: San Mateo Police Station](#)
- Thu, May 12**  
[Traffic Forum #9: San Mateo Police Station](#)
- Thu, May 26**  
[Traffic Forum #10: LEAD Elementary](#)

# NEXT STEPS

1. Initiate solutions
2. Continuously update Traffic Forums website
3. Look for opportunities to participate online
4. Ongoing Neighborhood Process

# TRAFFIC FORUM – ONGOING NEIGHBORHOOD PROCESS

1. Establish point of contact with Traffic Forum Steering Committee (TFSC)
2. City will coordinate with TFSC
3. City will communicate with full neighborhood using postcard mailing
4. Obtain neighborhood feedback using online tool





# THANK YOU!

