



NEIGHBORHOOD TRAFFIC FORUMS

FORUM #8
APRIL 28, 2016

TONIGHT'S AGENDA

1. Welcome & Introductions
2. Overview
3. Breakout Session
4. Tables Report Out
5. Next Steps



QUALITY OF LIFE



CHALLENGES

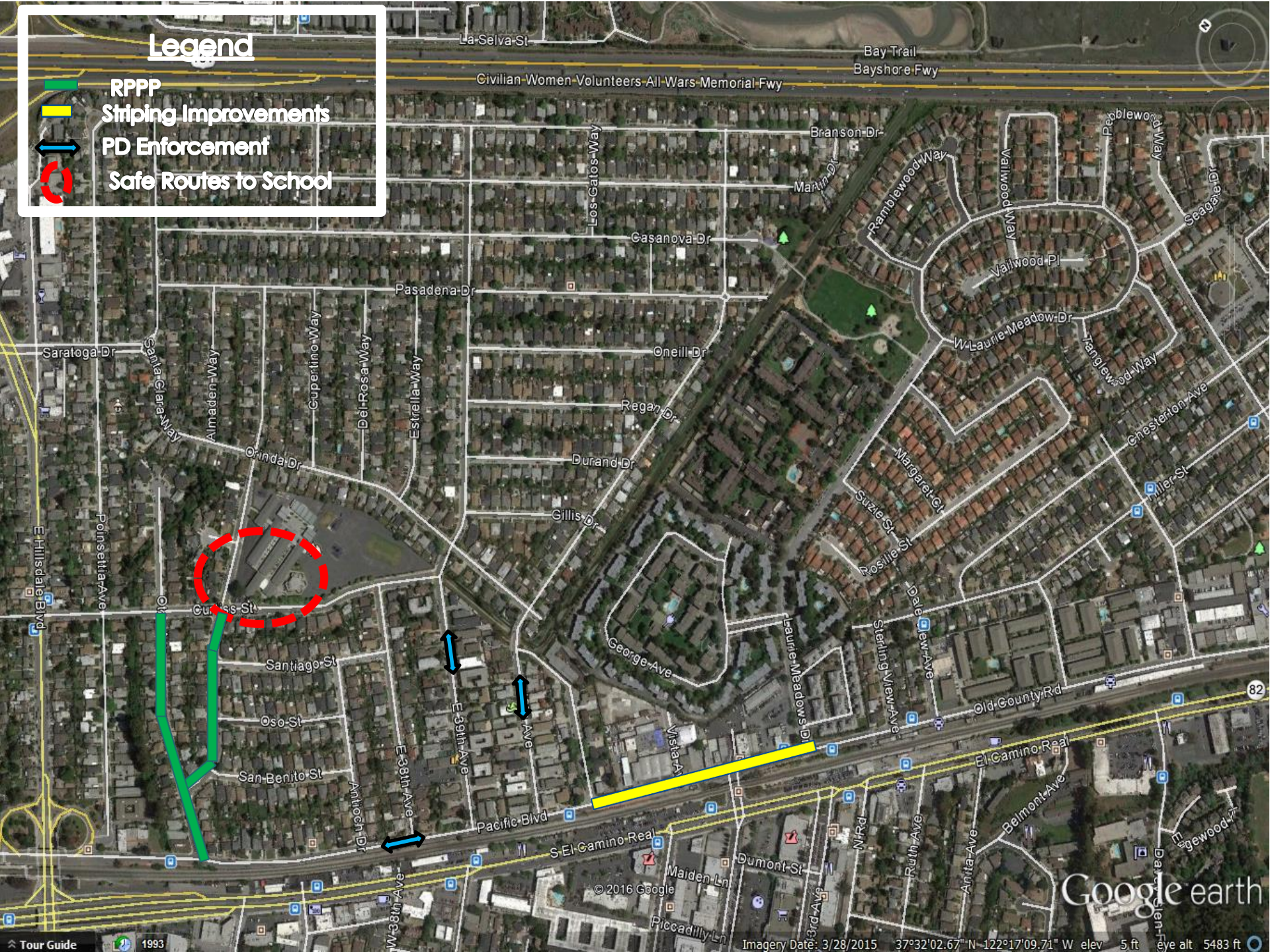
- Neighborhood agreement to solutions
- Issues beyond our control - regional & state
- Meets the needs of entire San Mateo community
- Timeliness of response - Regulatory requirements
- Expensive solutions

CURRENT NEIGHBORHOOD EFFORTS

- Expanded Residential Permit Parking Program near Caltrain Station
- Safe Routes to School Improvements
- Ongoing speeding enforcement of:
 - Pacific, E. 39th, E. 40th
- Striping improvements on Pacific Blvd

Legend

- RPSP
- Striping Improvements
- PD Enforcement
- Safe Routes to School

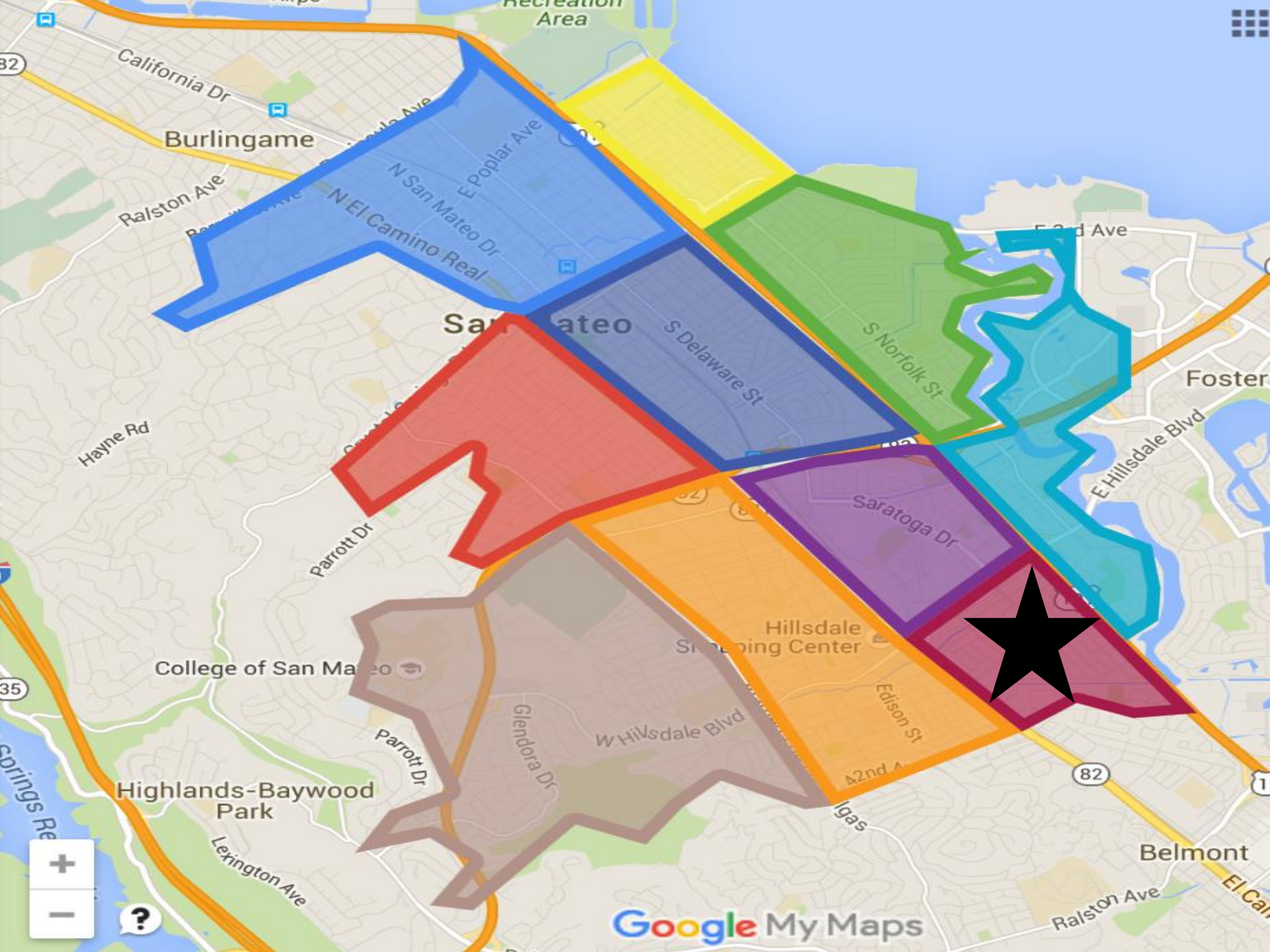


Google earth

LOCAL & REGIONAL STUDIES/PROJECTS

1. SR-92 Improvements (I-280 to SM Bridge) Study
2. US-101 Mid-County Improvements Study
3. Peninsula Ave Interchange
4. SR-92/El Camino Real Interchange
5. Railroad Grade Separations at 25th, 28th and 31st
6. 20th/El Camino Real Right Turn Lane

For more information, please see separate project sheet available.



BREAK-OUT SESSION

1. Comments by table
2. Facilitators will:
 - a. Solicit comments from each person
 - b. List all issues on flip chart
3. Participants will:
 - a. Share specific traffic interests (location, time, etc.)
 - b. Maps are for reference only
 - c. One speaker at a time
 - d. Be respectful and courteous
 - e. Share the airtime
 - f. All comments/suggestions are valid
 - g. Identify top 3 concerns of group

FURTHER DEVELOPING NEIGHBORHOOD PRIORITIES

1. Identify neighborhood Traffic Forum Steering Committee (TFSC)
 - HOA members
 - Neighborhood volunteers
2. Discuss at table
3. Sign up Sheet at end of meeting

REPORT OUT

1. Report out one top interest table by table
2. No duplicates
3. Continue around the room for top 3



STAY CONNECTED

- www.cityofsanmateo.org/traffic
- Sign in sheets at entrance
- Ongoing changes and new technologies

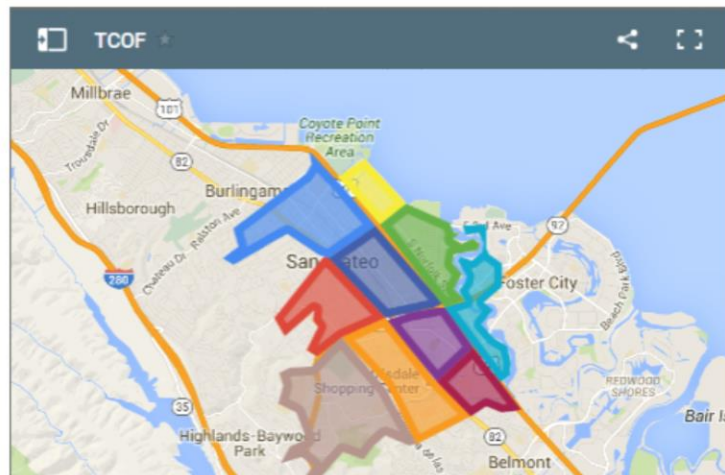
Neighborhood Traffic Forums

Through the end of May 2016, Public Works will be holding a series of bi-weekly public forums to gather feedback and suggestions from the community regarding traffic concerns throughout the City.

Participate Online!

San Mateo wants to make sure to hear from all residents. If you can't make a meeting or prefer to provide comments electronically, [click here](#) to provide your traffic concerns.

Below is a map of the ten neighborhood areas Public Works plans to hold meetings. Click on any colored area to get details:



**Email
Alerts**
Get Notified

Calendar	SEE MORE
Thu, Mar. 10 Traffic Forum #5: Beresford Elementary	
Thu, Mar. 24 Traffic Forum #6: Poplar Creek Golf Course	
Thu, Apr. 14 Traffic Forum #7: Hillsdale High School Cafeteria	
Thu, Apr. 28 Traffic Forum #8: San Mateo Police Station	
Thu, May 12 Traffic Forum #9: San Mateo Police Station	
Thu, May 26 Traffic Forum #10: LEAD Elementary	

NEXT STEPS

1. Initiate solutions
2. Continuously update Traffic Forums website
3. Look for opportunities to participate online
4. Ongoing Neighborhood Process

TRAFFIC FORUM – ONGOING NEIGHBORHOOD PROCESS

1. Establish point of contact with Traffic Forum Steering Committee (TFSC)
2. City will coordinate with TFSC
3. City will communicate with full neighborhood using postcard mailing
4. Obtain neighborhood feedback using online tool



THANK YOU!

