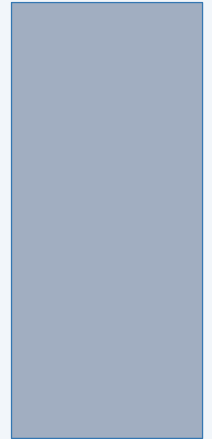




NEIGHBORHOOD TRAFFIC FORUMS

FORUM #5
MARCH 10, 2016



TONIGHT'S AGENDA

1. Welcome & Introductions
2. Overview
3. Breakout Session
4. Tables Report Out
5. Next Steps



QUALITY OF LIFE



CHALLENGES

- Neighborhood agreement to solutions
- Issues beyond our control - regional & state
- Meets the needs of entire San Mateo community
- Timeliness of response - Regulatory requirements
- Expensive solutions

CURRENT NEIGHBORHOOD EFFORTS

- Installed new sidewalks on Hacienda
- Installed RPPP on Donner, Garden
- Paving Alameda (SR-92 to 24th) in summer 2016
- Ongoing speeding enforcement of:
 - 20th, 31st, Alameda, W. Hillsdale
- Safe Routes to School improvements at Laurel Elementary
- Ongoing coordination with San Mateo Medical Center regarding parking issues
- Bi-annual meetings with Serra High School
- 20th/El Camino Real Right Turn Lane
- SR-92/El Camino Real Interchange

Legend

- New Sidewalks
- Paving
- PD Enforcement
- RPPP
- SR2S Improvements
- Coordination/Meetings

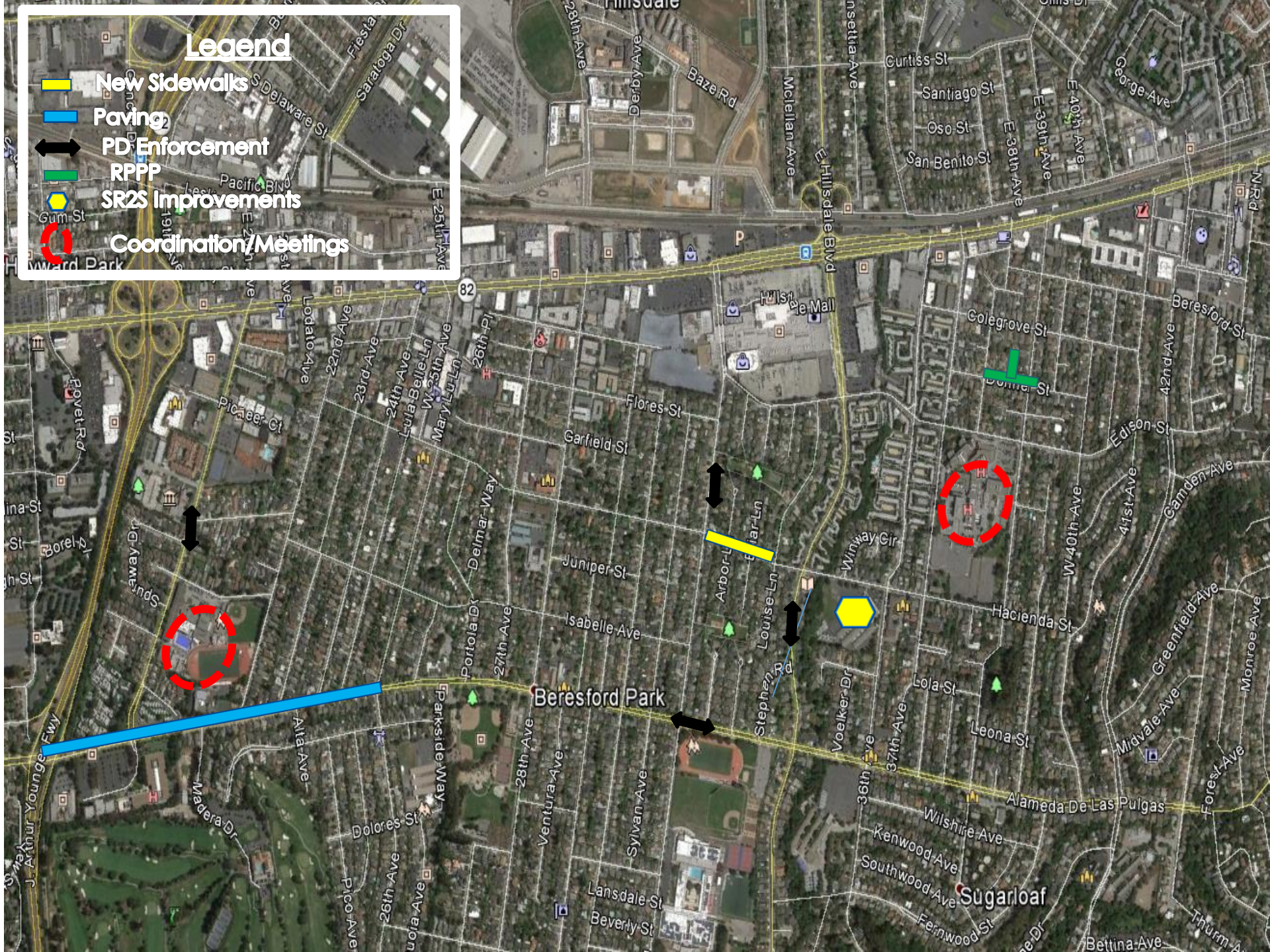
Paving

PD Enforcement

RPPP

SR2S Improvements

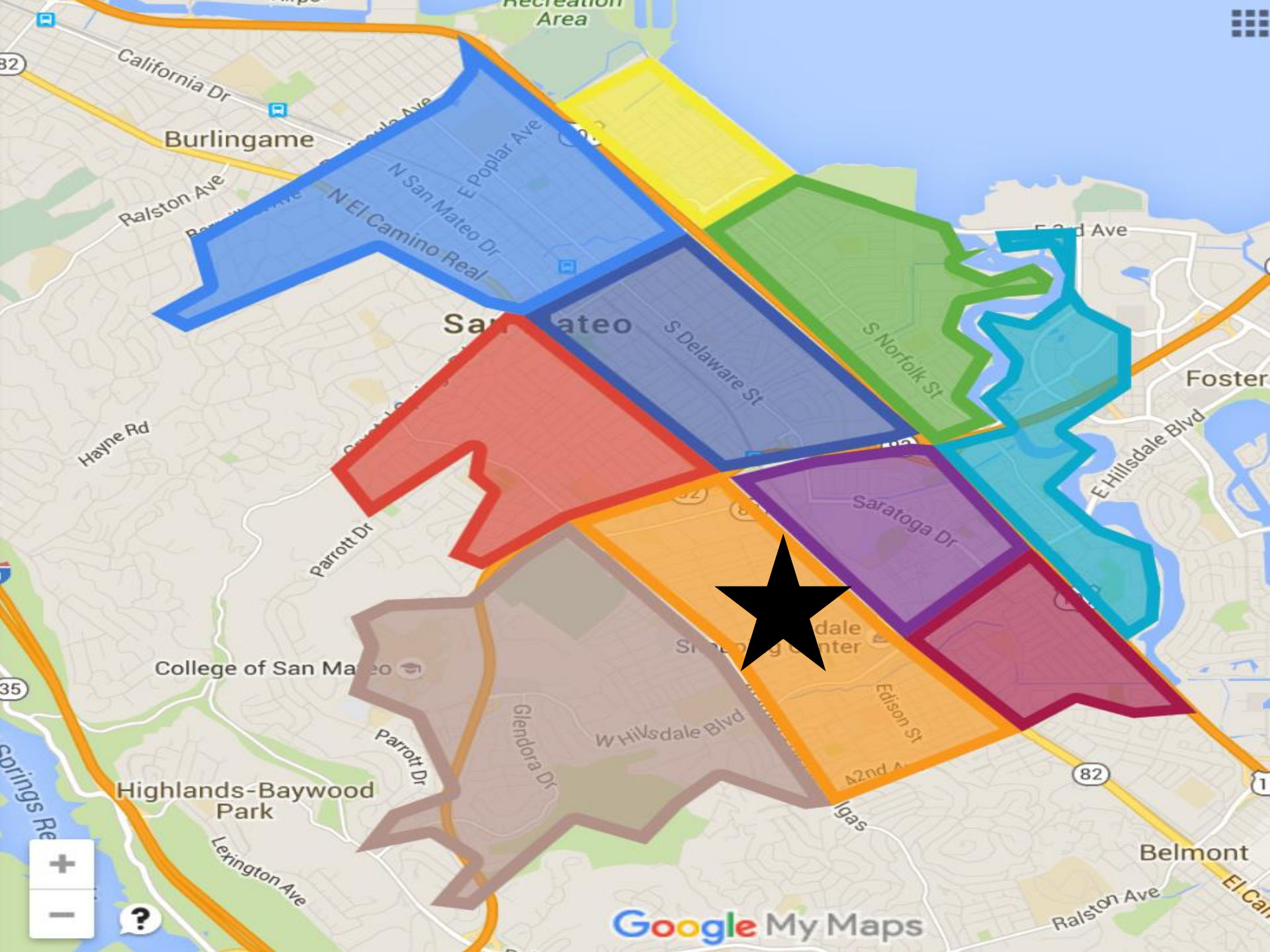
Coordination/Meetings



LOCAL & REGIONAL STUDIES/PROJECTS

1. SR-92 Improvements (I-280 to SM Bridge) Study
2. US-101 Mid-County Improvements Study
3. Peninsula Ave Interchange
4. SR-92/El Camino Real Interchange
5. Railroad Grade Separations at 25th, 28th and 31st
6. 20th/El Camino Real Right Turn Lane

For more information, please see separate project sheet available.



BREAK-OUT SESSION

1. Comments by table
2. Facilitators will:
 - a. Solicit comments from each person
 - b. List all issues on flip chart
3. Participants will:
 - a. Share specific traffic interests
 - b. Note area of interests on map
 - c. One speaker at a time
 - d. Be respectful and courteous
 - e. Share the airtime
 - f. All comments/suggestions are valid
 - g. Identify top 3 concerns of group
4. Transition to neighborhood plan discussion

FURTHER DEVELOPING NEIGHBORHOOD PLANS

1. Identify preferred process for next step – ongoing communication

Suggestions –

- Use HOA
- Steering Committee with selected members
- Formal City process (through the Public Works Commission, similar process like stop signs)
- Others???

2. Tables report back

STAY CONNECTED

- www.cityofsanmateo.org/traffic
- Sign in sheets at entrance
- Introducing “Peak Democracy”

http://www.peakdemocracy.com/portals/237/forum_home?phase=open

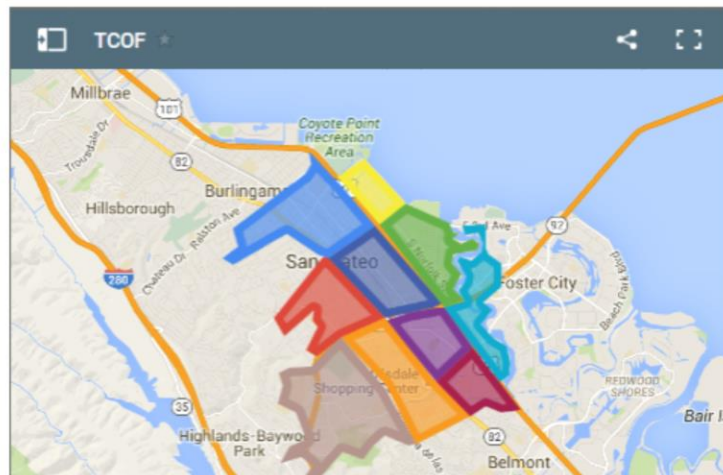
Neighborhood Traffic Forums

Through the end of May 2016, Public Works will be holding a series of bi-weekly public forums to gather feedback and suggestions from the community regarding traffic concerns throughout the City.

Participate Online!

San Mateo wants to make sure to hear from all residents. If you can't make a meeting or prefer to provide comments electronically, [click here](#) to provide your traffic concerns.

Below is a map of the ten neighborhood areas Public Works plans to hold meetings. Click on any colored area to get details:



**Email
Alerts**
Get Notified

Calendar

SEE MORE

- Thu, Mar. 10**
[Traffic Forum #5: Beresford Elementary](#)
- Thu, Mar. 24**
[Traffic Forum #6: Poplar Creek Golf Course](#)
- Thu, Apr. 14**
[Traffic Forum #7: Hillsdale High School Cafeteria](#)
- Thu, Apr. 28**
[Traffic Forum #8: San Mateo Police Station](#)
- Thu, May 12**
[Traffic Forum #9: San Mateo Police Station](#)
- Thu, May 26**
[Traffic Forum #10: LEAD Elementary](#)

NEXT STEPS

1. Initiate solutions
2. Continuously update Traffic Forums website with meeting notes and updates
3. Look for opportunities to participate online
4. Future neighborhood discussions and process



THANK YOU!

