



NEIGHBORHOOD TRAFFIC FORUMS

FORUM #2
JANUARY 28, 2016

TONIGHT'S AGENDA

1. Welcome & Introductions
2. Overview
3. Breakout Session
4. Tables Report Out
5. Next Steps



QUALITY OF LIFE

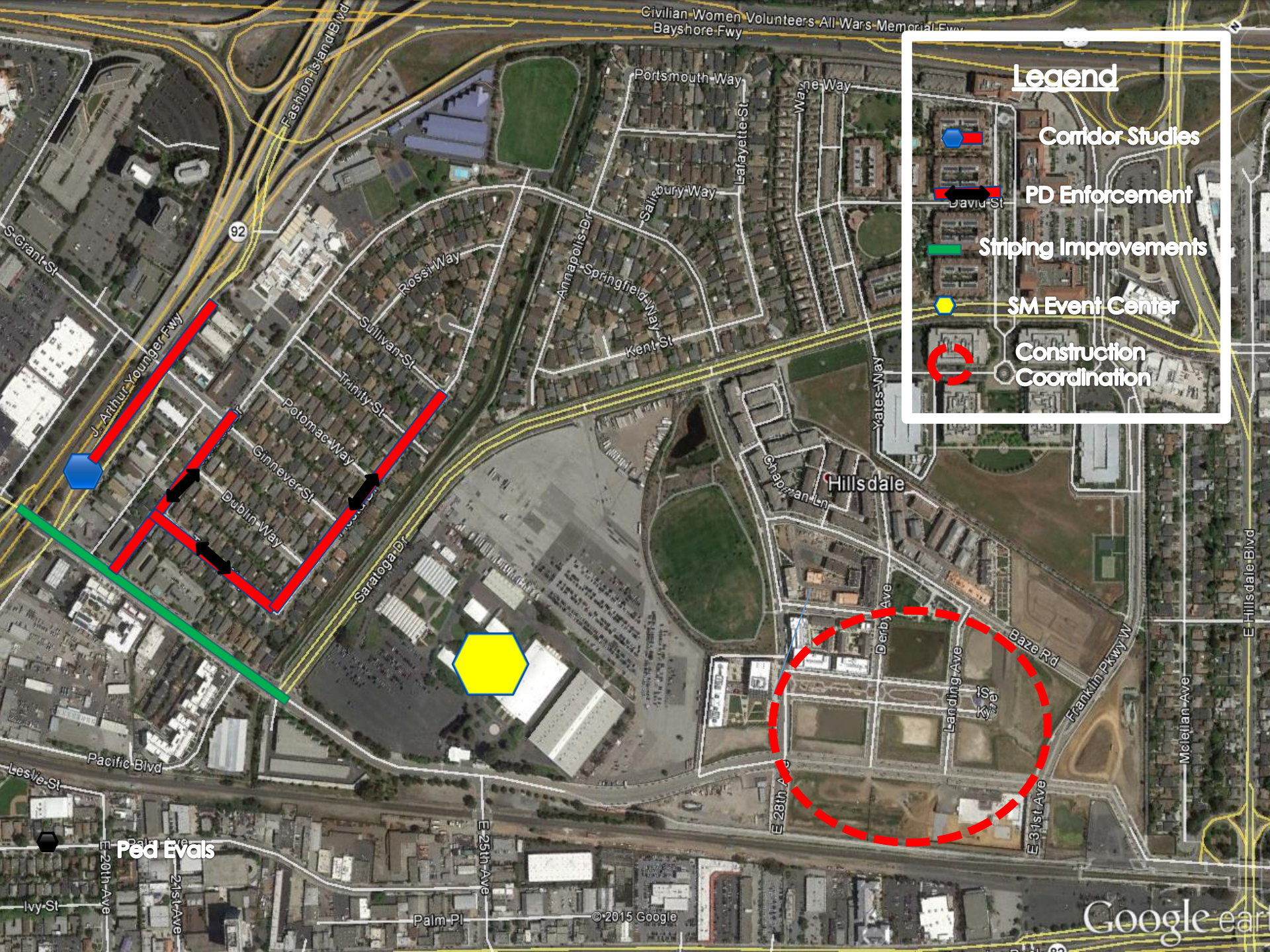


CHALLENGES

- Neighborhood agreement to solutions
- Issues beyond our control - regional & state
- Meets the needs of entire San Mateo community
- Timeliness of response - Regulatory requirements
- Expensive solutions

CURRENT NEIGHBORHOOD EFFORTS

- Evaluated Google bus cut through issue.
- Coordinating with the San Mateo County Transportation Authority on the SR-92 Improvements (I-280 to SM Bridge) Study
- Ongoing speeding enforcement of:
 - Bermuda, Fiesta, Texas
- Evaluating striping improvements on S. Delaware
- Continue to improve traffic plans for Event Center
- Ongoing coordination of construction activities in Bay Meadows



Legend

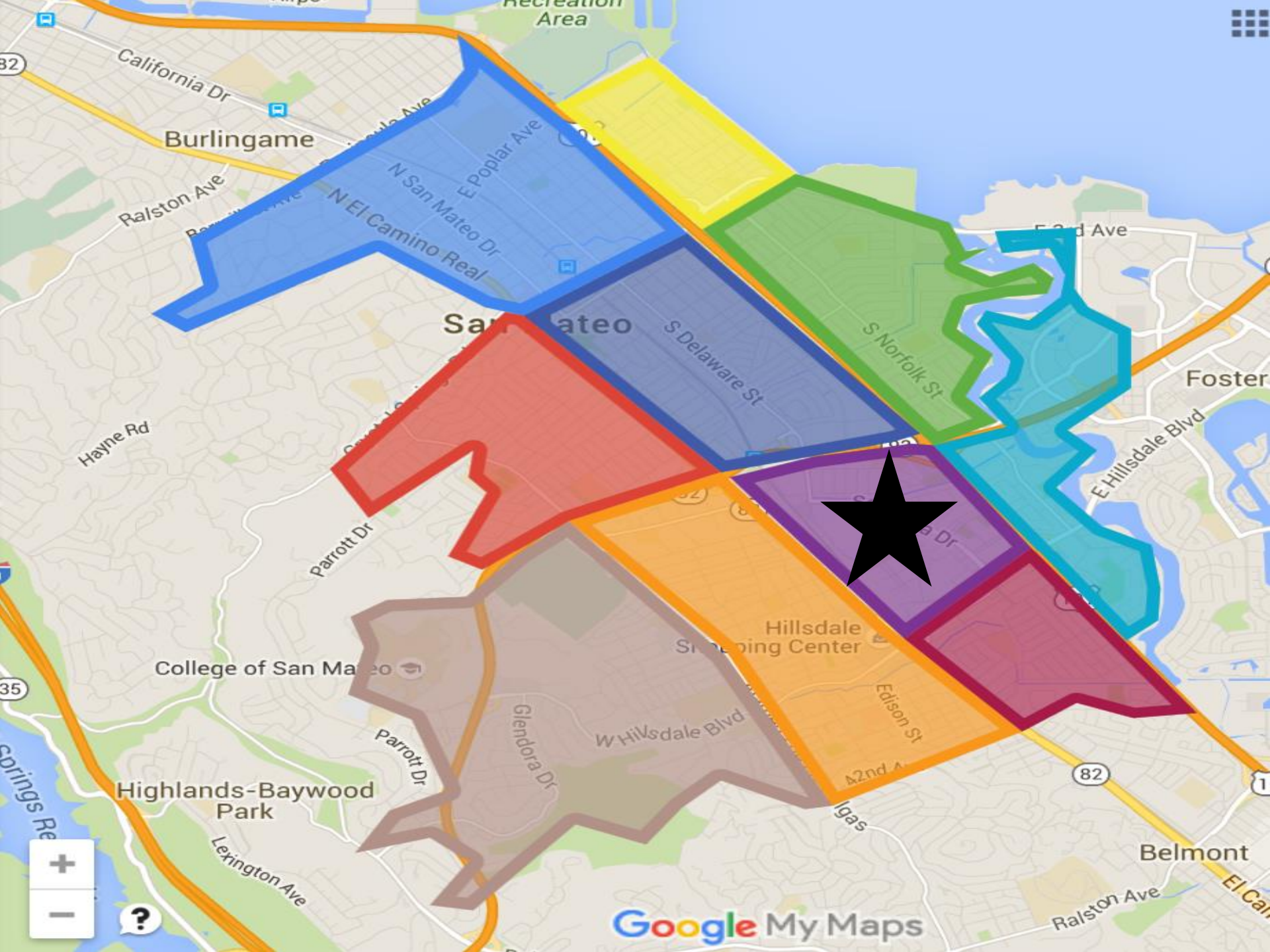
-  Corridor Studies
-  PD Enforcement
-  Striping Improvements
-  SM Event Center
-  Construction Coordination

Ped Evals

LOCAL & REGIONAL STUDIES/PROJECTS

1. SR-92 Improvements (I-280 to SM Bridge) Study
2. US-101 Mid-County Improvements Study
3. Peninsula Ave Interchange
4. SR-92/El Camino Real Interchange
5. Railroad Grade Separations at 25th, 28th and 31st
6. 20th/El Camino Real Right Turn Lane

For more information, please see separate project sheet available.



BREAK-OUT SESSION

1. Comments by table
2. Facilitators will:
 - a. Solicit comments from each person
 - b. List all issues on flip chart
3. Participants will:
 - a. Share specific traffic interests
 - b. Note area of interests on map
 - c. One speaker at a time
 - d. Be respectful and courteous
 - e. Share the airtime
 - f. All comments/suggestions are valid
 - g. Identify top 3 concerns of group
4. Transition to neighborhood plan discussion

FURTHER DEVELOPING NEIGHBORHOOD PLANS

1. Identify preferred process for next step – ongoing communication

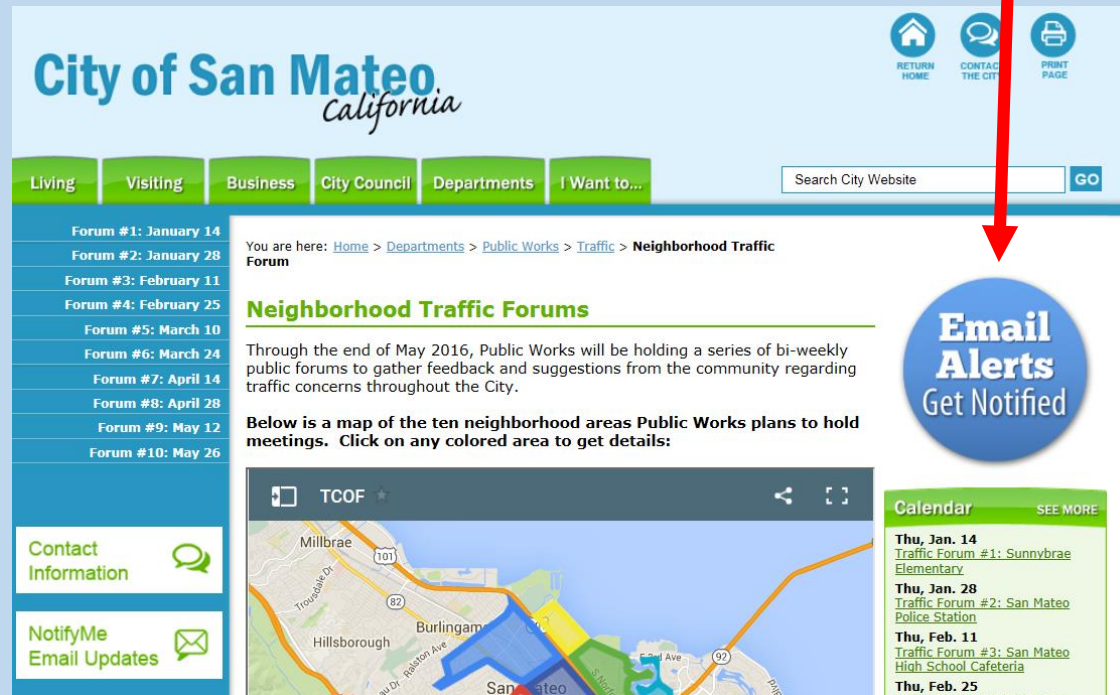
Suggestions –

- Use HOA
- Steering Committee with selected members
- Formal City process (through the Public Works Commission, similar process like stop signs)
- Others???

2. Tables report back

STAY CONNECTED

- www.cityofsanmateo.org/traffic
- Sign in sheets at entrance



City of San Mateo
California

RETURN HOME CONTACT THE CITY PRINT PAGE

Living Visiting Business City Council Departments I Want to...

Search City Website GO

Forum #1: January 14
Forum #2: January 28
Forum #3: February 11
Forum #4: February 25
Forum #5: March 10
Forum #6: March 24
Forum #7: April 14
Forum #8: April 28
Forum #9: May 12
Forum #10: May 26

You are here: [Home](#) > [Departments](#) > [Public Works](#) > [Traffic](#) > **Neighborhood Traffic Forum**

Neighborhood Traffic Forums

Through the end of May 2016, Public Works will be holding a series of bi-weekly public forums to gather feedback and suggestions from the community regarding traffic concerns throughout the City.

Below is a map of the ten neighborhood areas Public Works plans to hold meetings. Click on any colored area to get details:

TCOF

Map showing the ten neighborhood areas Public Works plans to hold meetings. The map includes labels for Millbrae, Hillsborough, Burlingame, San Mateo, and San Bruno. A red arrow points from the top right towards a blue circular button labeled "Email Alerts Get Notified".

Email Alerts
Get Notified

Calendar SEE MORE

- Thu, Jan. 14
[Traffic Forum #1: Sunnybrae Elementary](#)
- Thu, Jan. 28
[Traffic Forum #2: San Mateo Police Station](#)
- Thu, Feb. 11
[Traffic Forum #3: San Mateo High School Cafeteria](#)
- Thu, Feb. 25
[Traffic Forum #4: Oak Room](#)

NEXT STEPS

1. Initiate solutions
2. Continuously update Traffic Forums website with meeting notes and updates
3. Look for opportunities to participate online
4. Future neighborhood discussions and process



THANK YOU!

