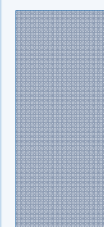




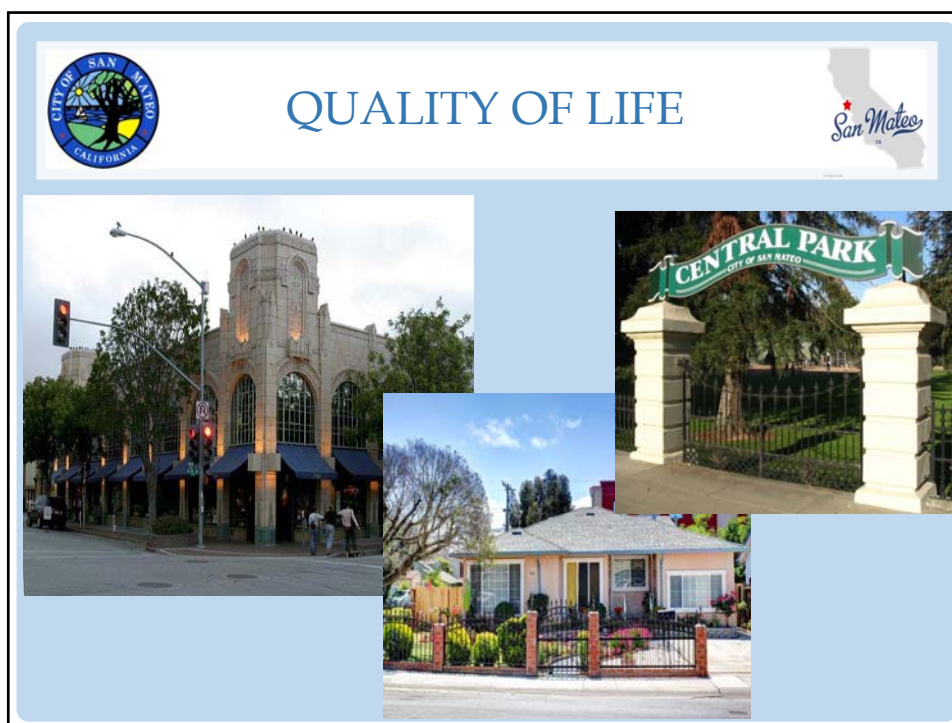
NEIGHBORHOOD TRAFFIC FORUMS

FORUM #1
JANUARY 14, 2016



TONIGHT'S AGENDA

1. Welcome & Introductions
2. Overview
3. Breakout Session
4. Tables Report Out
5. Next Steps

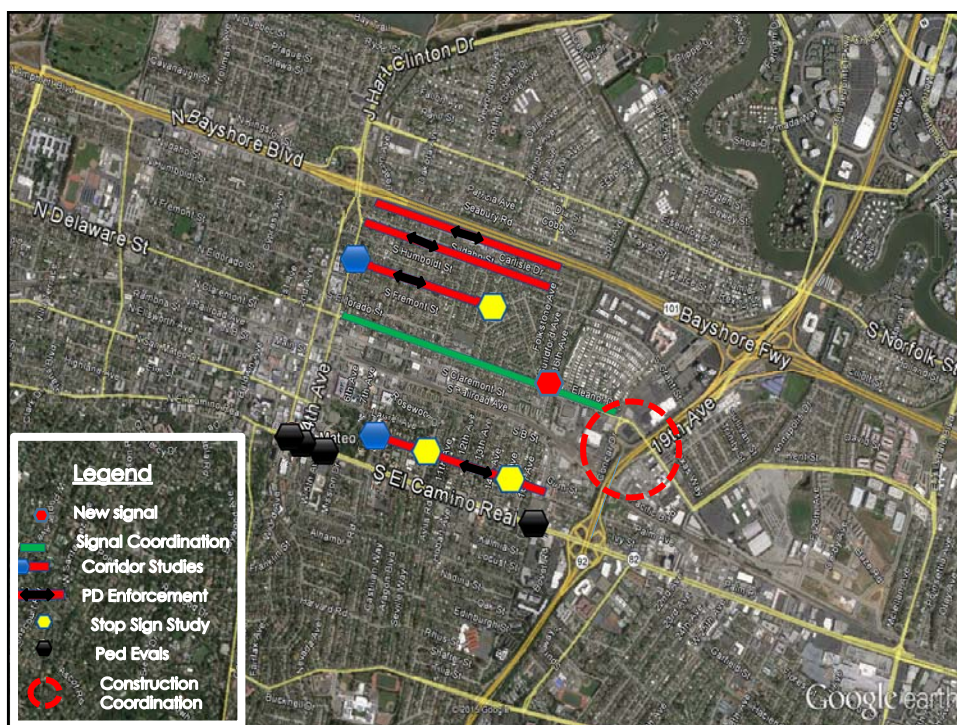


CHALLENGES

- Neighborhood agreement to solutions
- Issues beyond our control - regional & state
- Meets the needs of entire San Mateo community
- Timeliness of response - Regulatory requirements
- Expensive solutions

NEIGHBORHOOD SOLUTIONS COMING TO YOU

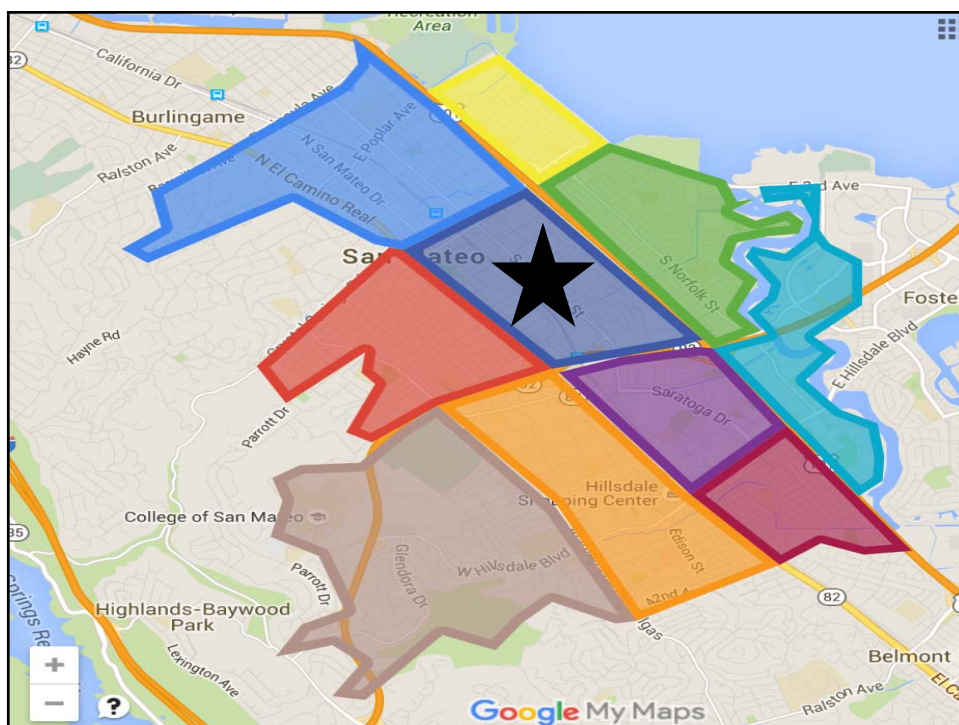
- Signalization of the following intersections:
 - S. Delaware St at E. 16th Ave/Sunnybrae Blvd
- Coordination of the signals along the S. Delaware
- Corridor studies of Palm Ave and S. Grant
- Ongoing speeding enforcement of:
 - Palm Ave, S. Grant St, S. Amphlett Blvd, S. Idaho
- Stop Sign Studies at 10th/S. Grant & Palm corridor
- Evaluating pedestrian timing with Caltrans on El Camino at 3rd, 4th, 5th, 17th
- Ongoing coordination of construction activities at Concar/Delaware



LOCAL & REGIONAL STUDIES/PROJECTS

1. SR-92 Improvements (I-280 to SM Bridge) Study
2. US-101 Mid-County Improvements Study
3. Peninsula Ave Interchange
4. SR-92/El Camino Real Interchange
5. Railroad Grade Separations at 25th, 28th and 31st
6. 20th/El Camino Real Right Turn Lane

For more information, please see separate project sheet available.



BREAK-OUT SESSION

1. Comments by table
2. Facilitators will:
 - a. Solicit comments from each person
 - b. List all issues on flip chart
3. Participants will:
 - a. Share specific traffic interests
 - b. Note area of interests on map
 - c. One speaker at a time
 - d. Be respectful and courteous
 - e. Share the airtime
 - f. All comments/suggestions are valid
 - g. Identify top 3 concerns of group
4. Transition to neighborhood plan discussion

FURTHER DEVELOPING NEIGHBORHOOD PLANS

1. Identify preferred process for next step – ongoing communication

Suggestions –

 - Use HOA
 - Steering Committee with selected members
 - Formal City process (through the Public Works Commission, similar process like stop signs)
 - Others???
2. Tables report back

STAY CONNECTED

- www.cityofsanmateo.org/traffic
- Sign in sheets at entrance



NEXT STEPS

1. Initiate solutions
2. Continuously update Traffic Forums website with meeting notes and updates
3. Look for opportunities to participate online
4. Future neighborhood discussions and process

