

Community Meeting

US 101/Peninsula Avenue Interchange Project



MAY 17, 2017



Department of Public Works
Stewards of the Infrastructure and Environment



Agenda

Open House	6:30 – 7:00
Presentation	7:00 – 7:30
Q&A	7:30 – 8:00
Resume Open House	8:00 – 8:30

US 101 / Peninsula Avenue Interchange Project



Project Stakeholders

- California Department of Transportation (Caltrans)
- San Mateo County Transportation Authority (SMCTA)
- City of San Mateo
- City of Burlingame
- Local Residents and Business Communities

US 101 / Peninsula Avenue Interchange Project



Goals For Tonight's Meeting

- Describe the Benefits of the Project
- Explain why the Project is Needed
- Describe Existing Condition and Project Features
- Answer your Questions

US 101 / Peninsula Avenue Interchange Project



Project Background



US 101 / Peninsula Avenue Interchange Project



Project Location Map



US 101 / Peninsula Avenue Interchange Project



Why a Long Term Solution at Peninsula?

Project Need:

- **Safety: Nonstandard ramp geometry at Poplar Avenue**
- **Provide Standard Interchange Configuration: Consolidate NB & SB ramps at Airport & Peninsula**
- **Peninsula is better suited to handle future traffic from/to the freeway**
 - 5-foot shoulders & no street parking
 - No driveways
 - Two lanes in each direction



US 101 / Peninsula Avenue Interchange Project



Benefits of the Project

Enhance Safety

- Remove Traffic from a 2-lane, residential street (Poplar)
- Provide Freeway Access from a 4-lane arterial (Peninsula, east of Humboldt)
- Remove Nonstandard ramps at Poplar
- Provide Safe Route for Peds/Bikes over US 101

US 101 / Peninsula Avenue Interchange Project



Key Design Elements

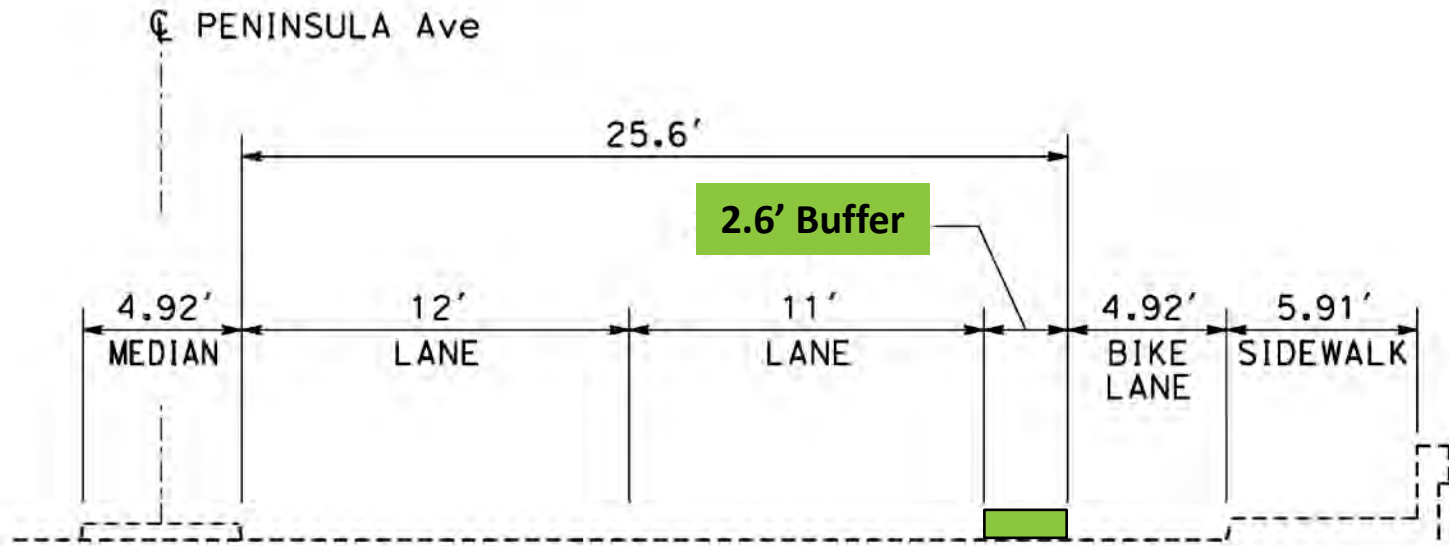
- Enhance Alternatives from Planning Phase
- Local Street Improvements
- Complete Street Design Features
 - Pedestrian and Bicycle Safe Access
 - Sidewalk Access to meet ADA Compliance
 - High Visibility Crosswalk (Ped & Bike)
 - Bulb Outs & Curb Extension
 - On Street Parking (side street)



US 101 / Peninsula Avenue Interchange Project



Improve Ped / Bike Access



TYPICAL SECTION - ALTERNATIVES 1 & 2
(Looking East)

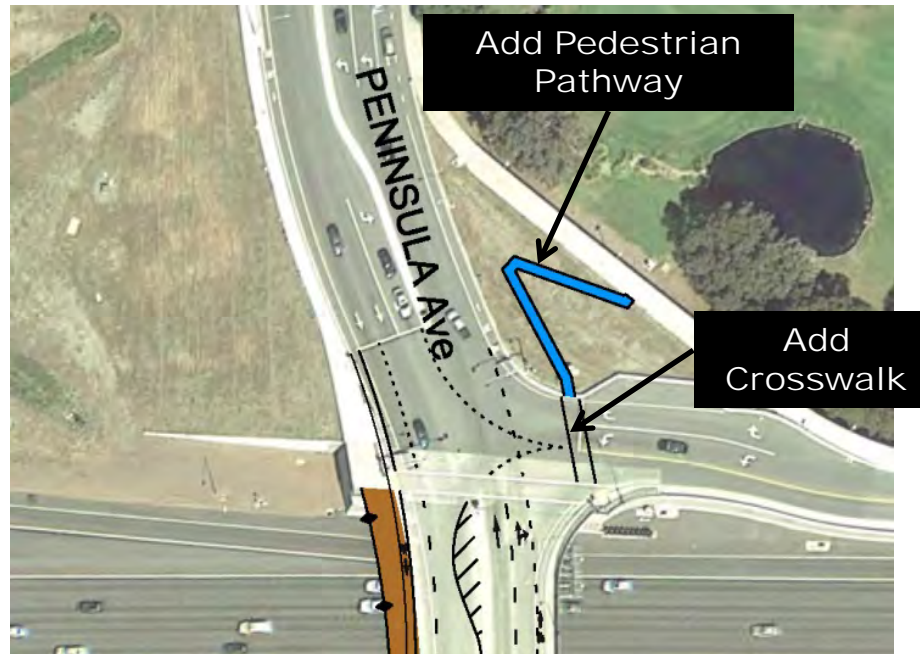
Bike Lane Improvement

US 101 / Peninsula Avenue Interchange Project



Improve Ped / Bike Access

Pedestrian/Traffic Conflict



No Direct Access from Bayshore to Sidewalk next to Golf Course

US 101 / Peninsula Avenue Interchange Project



Accident Data

Data from April 1, 2009 to December 31, 2016



Type of Collision (Total #):

Hit Object (6)	Blue	Sideswipe (4)	Green	Vehicle-Pedestrian (3)	Purple
Head-On (3)	Brown	Broadside (8)	Yellow		
Rear-End (9)	Red	Unknown (1)	White		

Note:

1. Each Dot Represents One Accident Involving One or More Vehicles or Pedestrian
2. Each Dot Does Not Represent the Precise Location of the Accident.

US 101 / Peninsula Avenue Interchange Project



Benefits of the Project

Enhance Mobility

- Improve Access to/from US 101
(for San Mateo and Burlingame residents)
- Improve Local Street Circulation
- Accommodate Future Traffic Volumes
- Anticipate to Minimize Cut Through Traffic

US 101 / Peninsula Avenue Interchange Project



Humboldt/Poplar to US 101 On-Ramp

(5:30 pm, Wednesday, May 10, 2017)

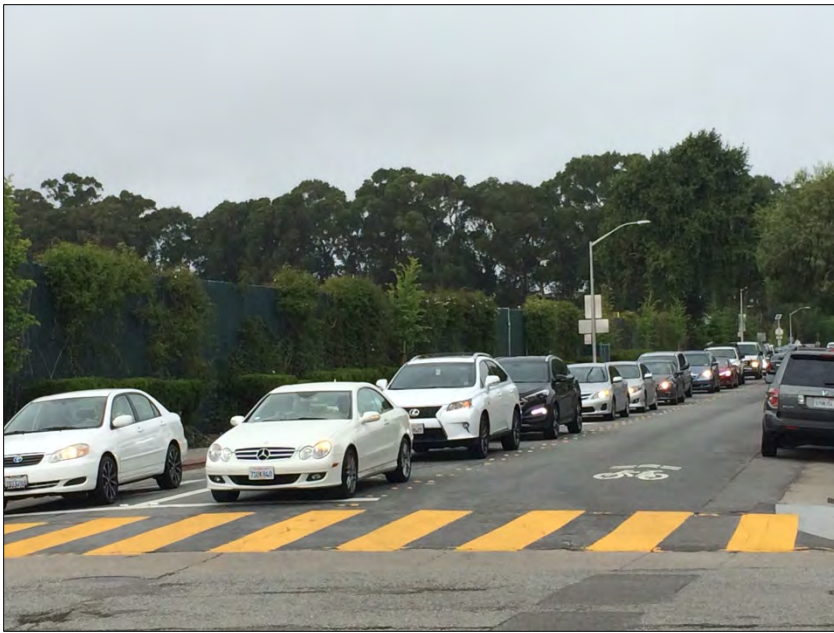
Length of time to travel 800 feet
(0.15 miles) = **4 mins 10 sec**

US 101 / Peninsula Avenue Interchange Project



Current Traffic Condition

Traffic Congestion & Queue Backup



Humboldt St / E Poplar Ave
Intersection

8:30 am on Wednesday, April 26, 2017



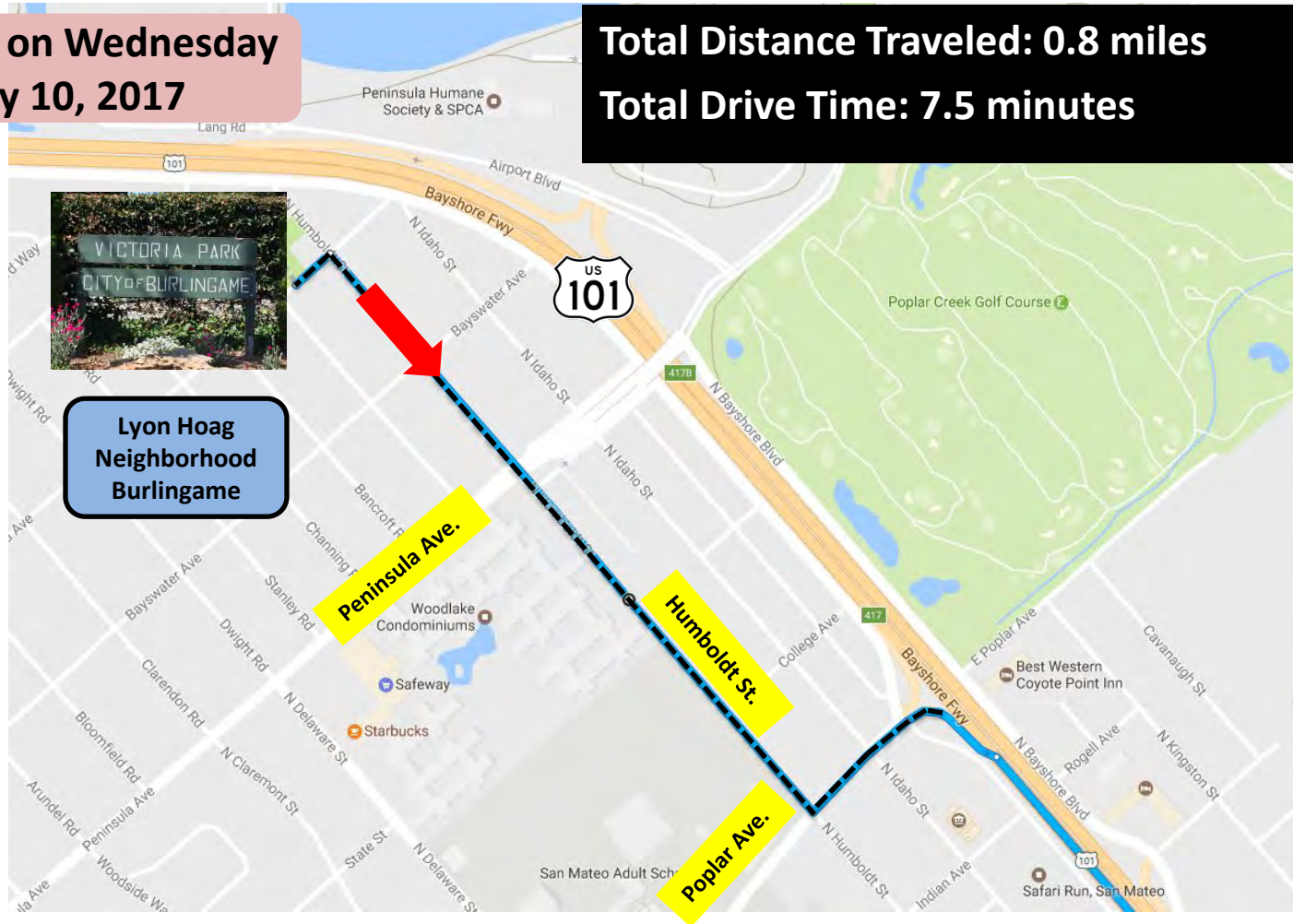
E Poplar Ave Traffic to US 101

8:30 am on Wednesday, April 26,
2017

From Victoria Park To US 101 SB (to San Jose) Via Poplar Ave (without Project)

5:00 pm on Wednesday
May 10, 2017

Total Distance Traveled: 0.8 miles
Total Drive Time: 7.5 minutes



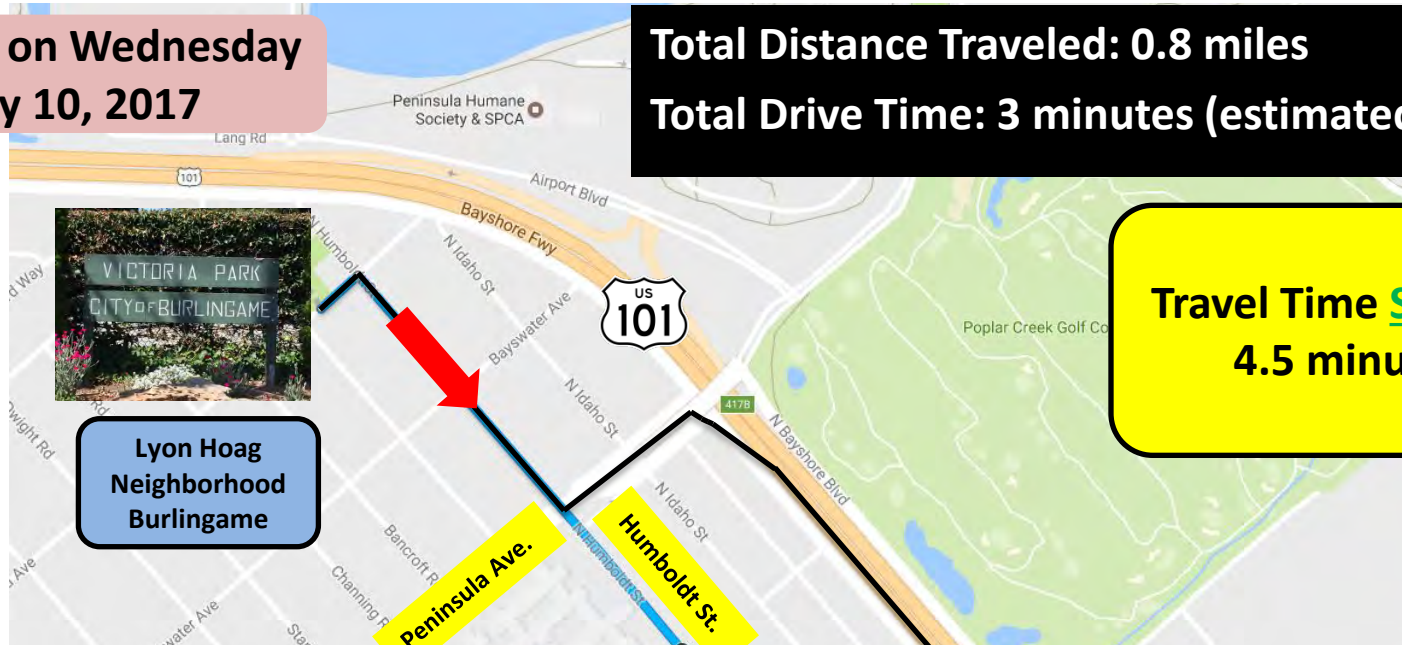
US 101 / Peninsula Avenue Interchange Project



From Victoria Park To US 101 SB (to San Jose) Via Peninsula Ave (with Project)

5:00 pm on Wednesday
May 10, 2017

Total Distance Traveled: 0.8 miles
Total Drive Time: 3 minutes (estimated)



In summary, Project benefits the driver and the local community!

- ✓ Reduces Travel Time
- ✓ Removes Traffic from Residential Streets:
 - Poplar Ave
 - Humboldt St

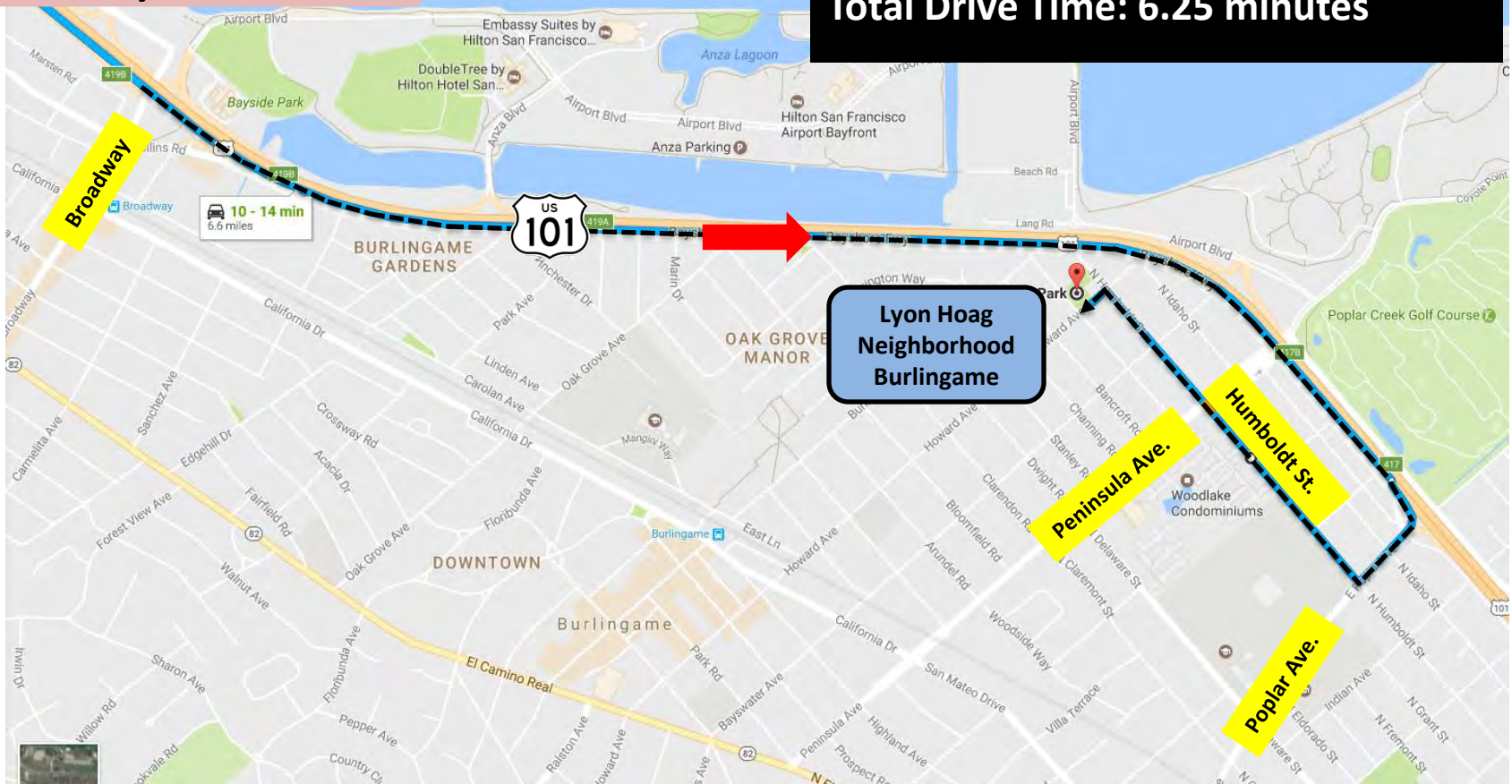
US 101 / Peninsula Avenue Interchange Project



From Broadway On Ramp to Victoria Park (without Project) (Using US 101)

5:15 pm on Wednesday
May 10, 2017

Total Distance Traveled: 3.1 miles
Total Drive Time: 6.25 minutes



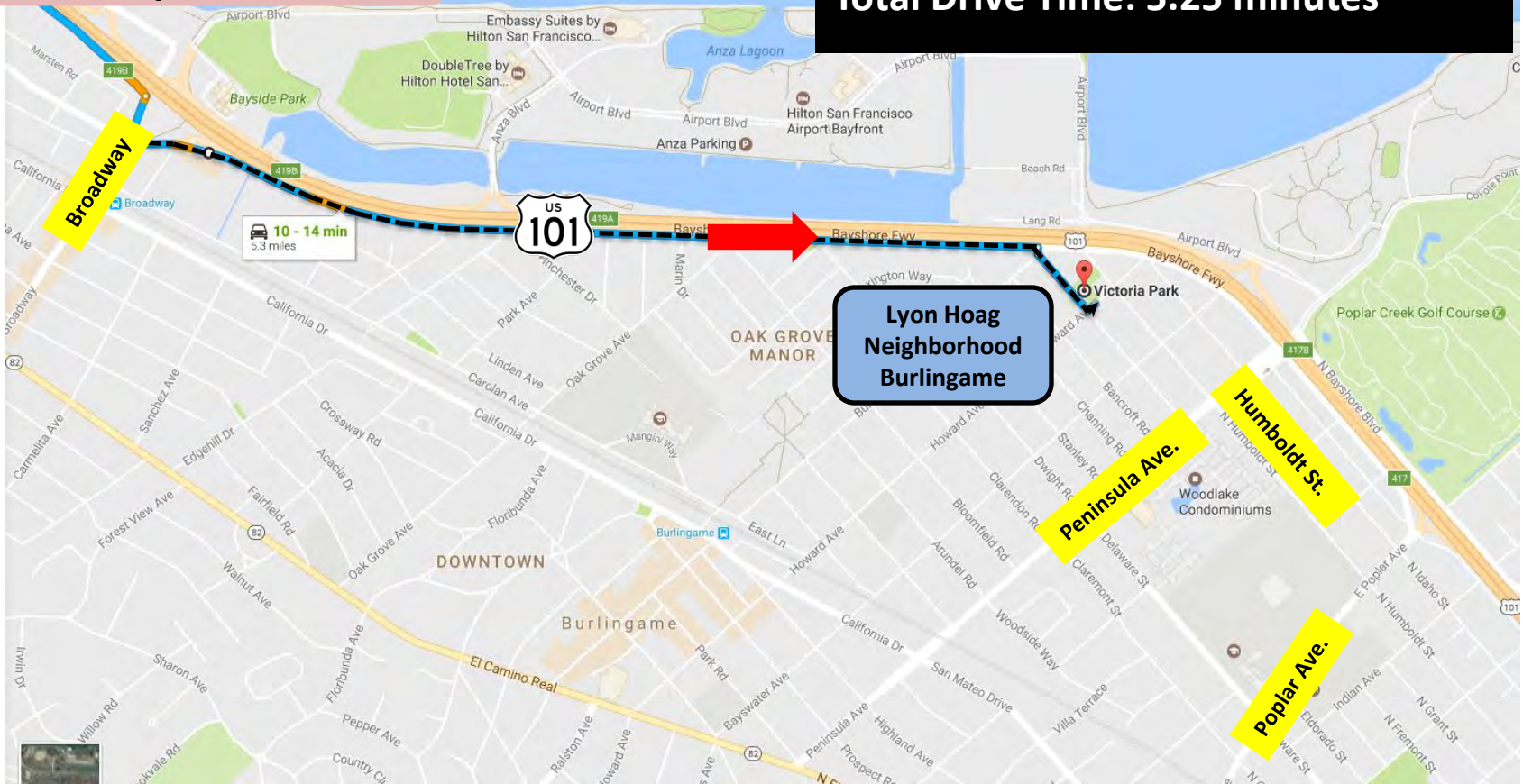
US 101 / Peninsula Avenue Interchange Project



From Broadway On Ramp to Victoria Park (without Project) (Using Rollins Road)

**5:15 pm on Wednesday
May 10, 2017**

Total Distance Traveled: 1.6 miles
Total Drive Time: 5.25 minutes



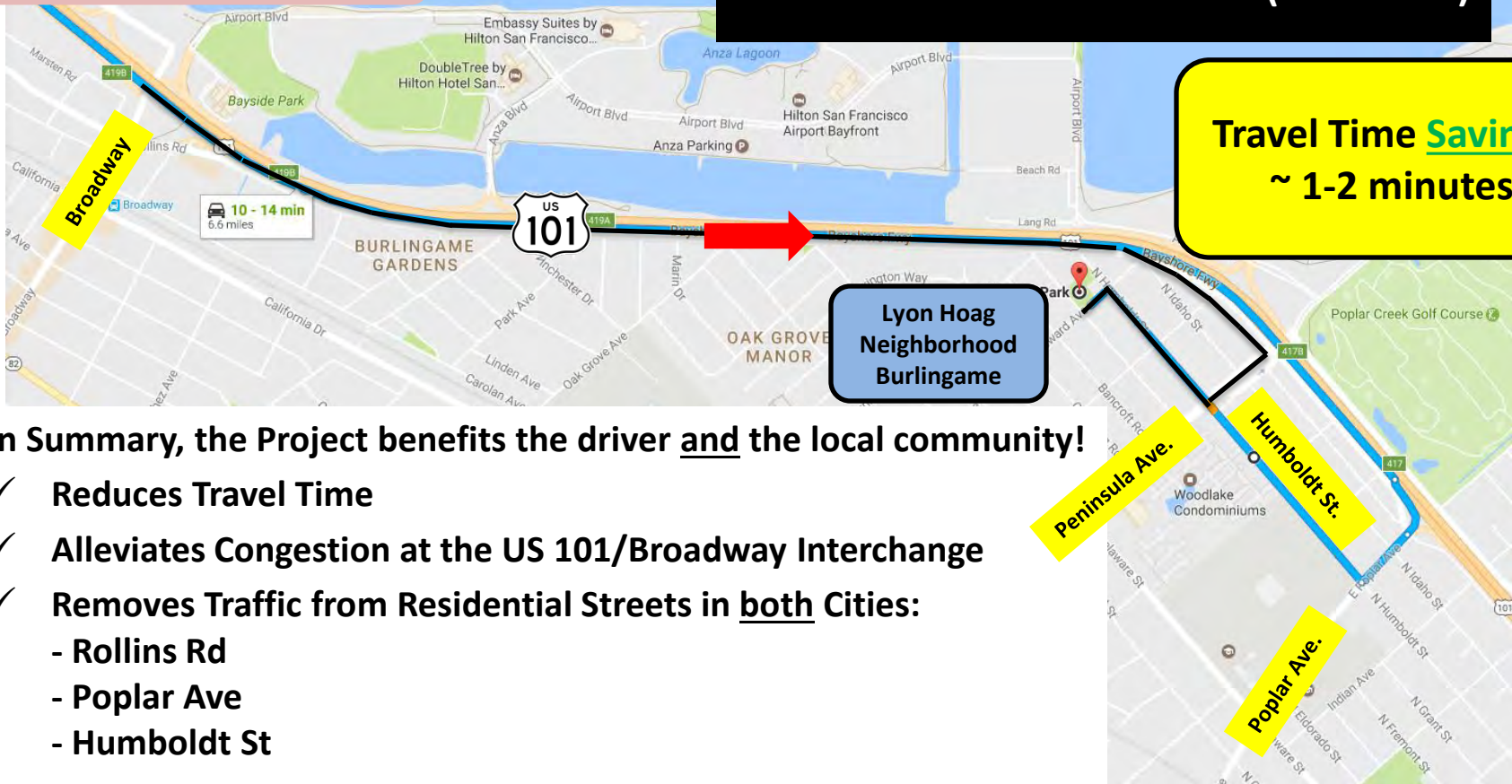
US 101 / Peninsula Avenue Interchange Project



From Broadway On Ramp to Victoria Park (with Project) (Using US 101 & Peninsula Ave.)

5:15 pm on Wednesday
May 10, 2017

Total Distance Traveled: 1.9 miles
Total Drive Time: 3-4 minutes (Estimated)



In Summary, the Project benefits the driver and the local community!

- ✓ Reduces Travel Time
- ✓ Alleviates Congestion at the US 101/Broadway Interchange
- ✓ Removes Traffic from Residential Streets in both Cities:
 - Rollins Rd
 - Poplar Ave
 - Humboldt St

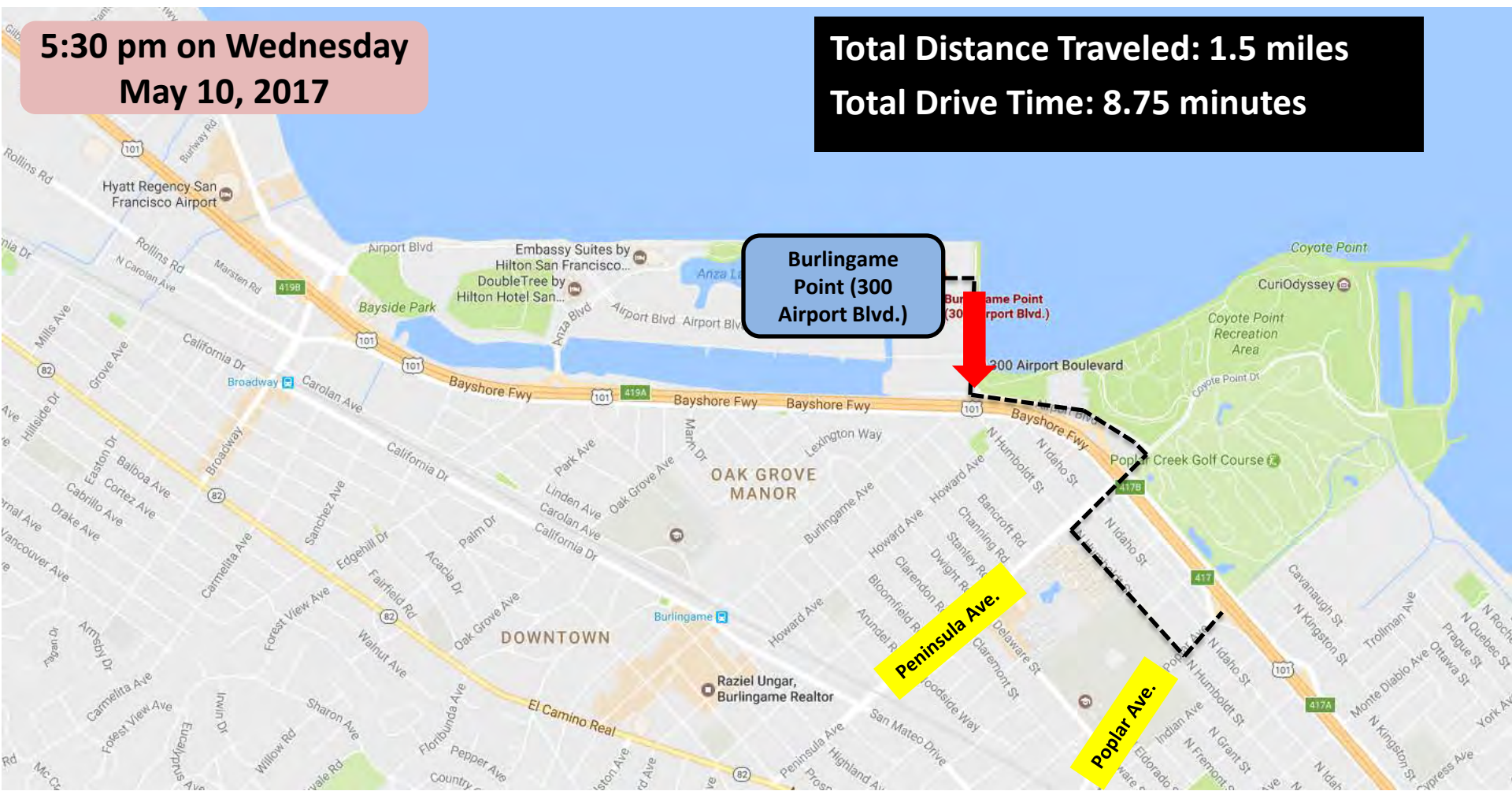
US 101 / Peninsula Avenue Interchange Project



From Burlingame Point To US 101 SB (to San Jose) Via Poplar Ave (without Project)

5:30 pm on Wednesday
May 10, 2017

Total Distance Traveled: 1.5 miles
Total Drive Time: 8.75 minutes



US 101 / Peninsula Avenue Interchange Project



From Burlingame Point To US 101 SB (to San Jose) Via Peninsula Ave (with Project)

5:30 pm on Wednesday
May 10, 2017

Total Distance Traveled: 1.2 miles
Total Drive Time: 3.5 minutes (estimated)

Travel Time &
Distance Savings:
> 5 minutes &
~ ¼ mile

Burlingame
Point (300
Airport Blvd.)

In Summary, the Project benefits the driver and the local community!

- ✓ Reduces Travel Time
- ✓ Alleviates Congestion at the US 101/Broadway Interchange
- ✓ Removes Traffic from Residential Streets:
 - Poplar Ave
 - Humboldt St

US 101 / Peninsula Avenue Interchange Project



Poplar vs Peninsula

Poplar Ave



- One Lane in Each Direction
- On-Street Parking & Driveways
- No Shoulders

Peninsula Ave



- Two Lanes in Each Direction
- No Parking, No Driveways
- 5-foot Shoulders

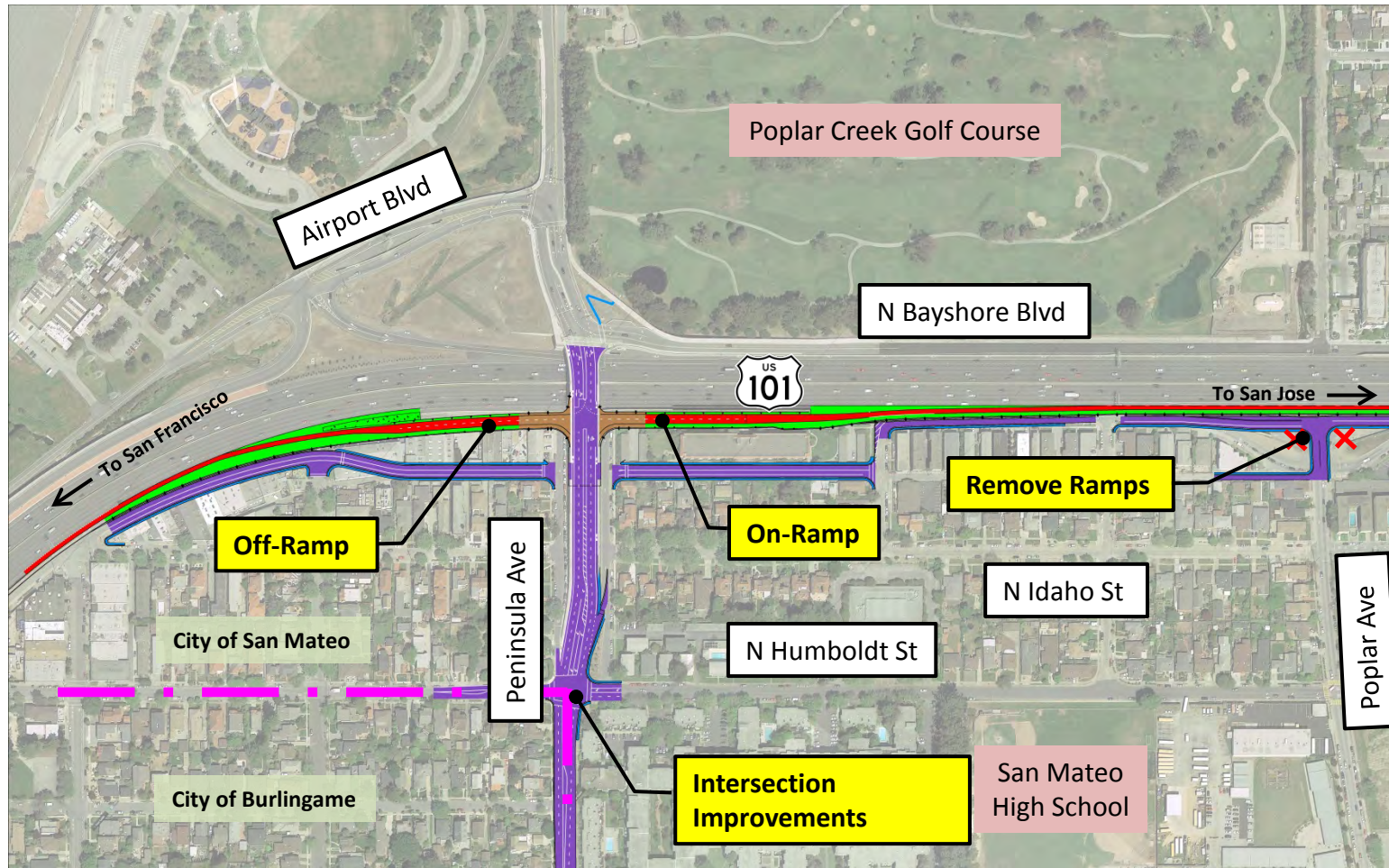
Better suited for traffic to/from freeway

US 101 / Peninsula Avenue Interchange Project



Peninsula Avenue Interchange

Alternative 1 – Partial Tight Diamond Configuration

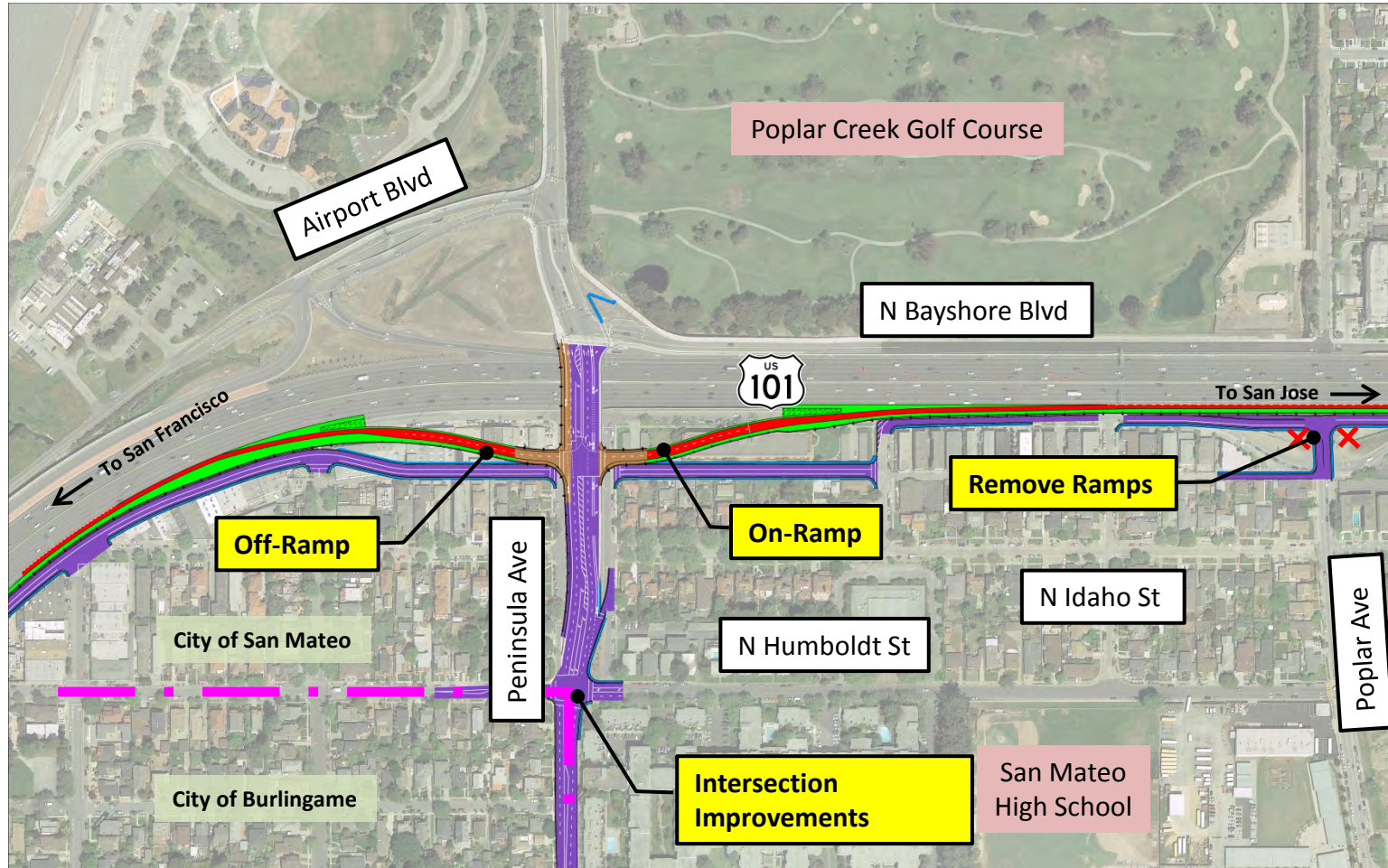


US 101 / Peninsula Avenue Interchange Project



Peninsula Avenue Interchange

Alternative 2 – Partial Spread Diamond Configuration



US 101 / Peninsula Avenue Interchange Project



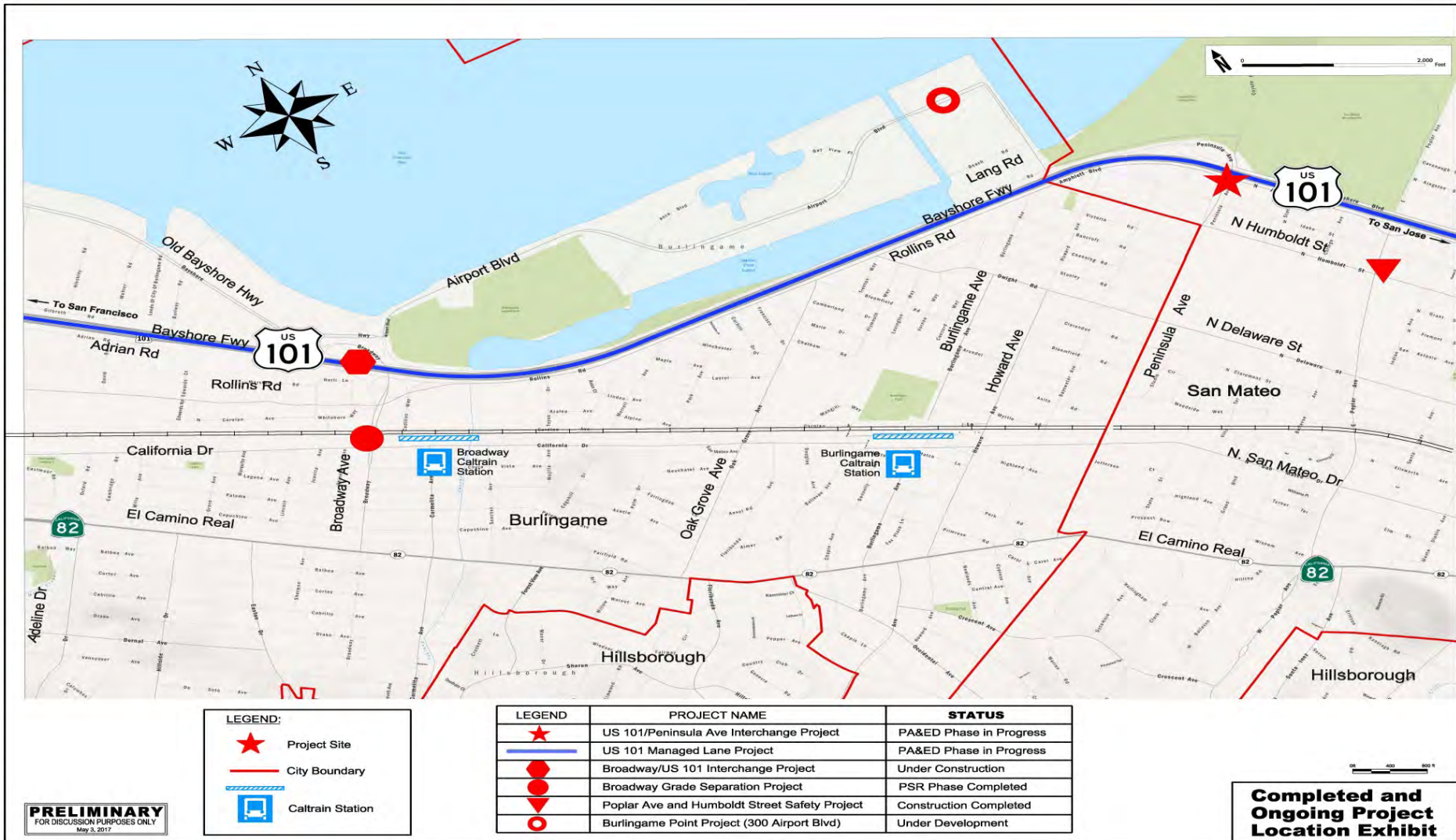
Caltrans Process

- Project Study Report-Project Development Support (PSR-PDS) **(Completed in 2015)**
 - Project Approval & Environmental Document (PA&ED) **(Current)**
 - *Final Design (PS&E) and ROW Acquisition**
 - *Bid Advertisement & Construction**
- * Future phases not currently funded

US 101 / Peninsula Avenue Interchange Project



Other Completed & Ongoing Projects



US 101 / Peninsula Avenue Interchange Project



Traffic Analysis

- **Steps to complete the Traffic Report**
 - A. Collect Intersection Counts for AM & PM Peak Hours
 - B. Collect 24/7 traffic volumes for roadway segments
 - C. Collect travel times along streets to capture queues
 - D. Calibrate software to match field conditions
 - E. Complete the existing conditions analysis
- **Three conditions analyzed:**
 - A. Existing (2017) Conditions
 - B. Opening Year (2025)
 - C. Design Year (2045)



US 101 / Peninsula Avenue Interchange Project



Traffic Analysis (continued)

- **Steps to complete the Traffic Report**

E. Traffic Forecasting

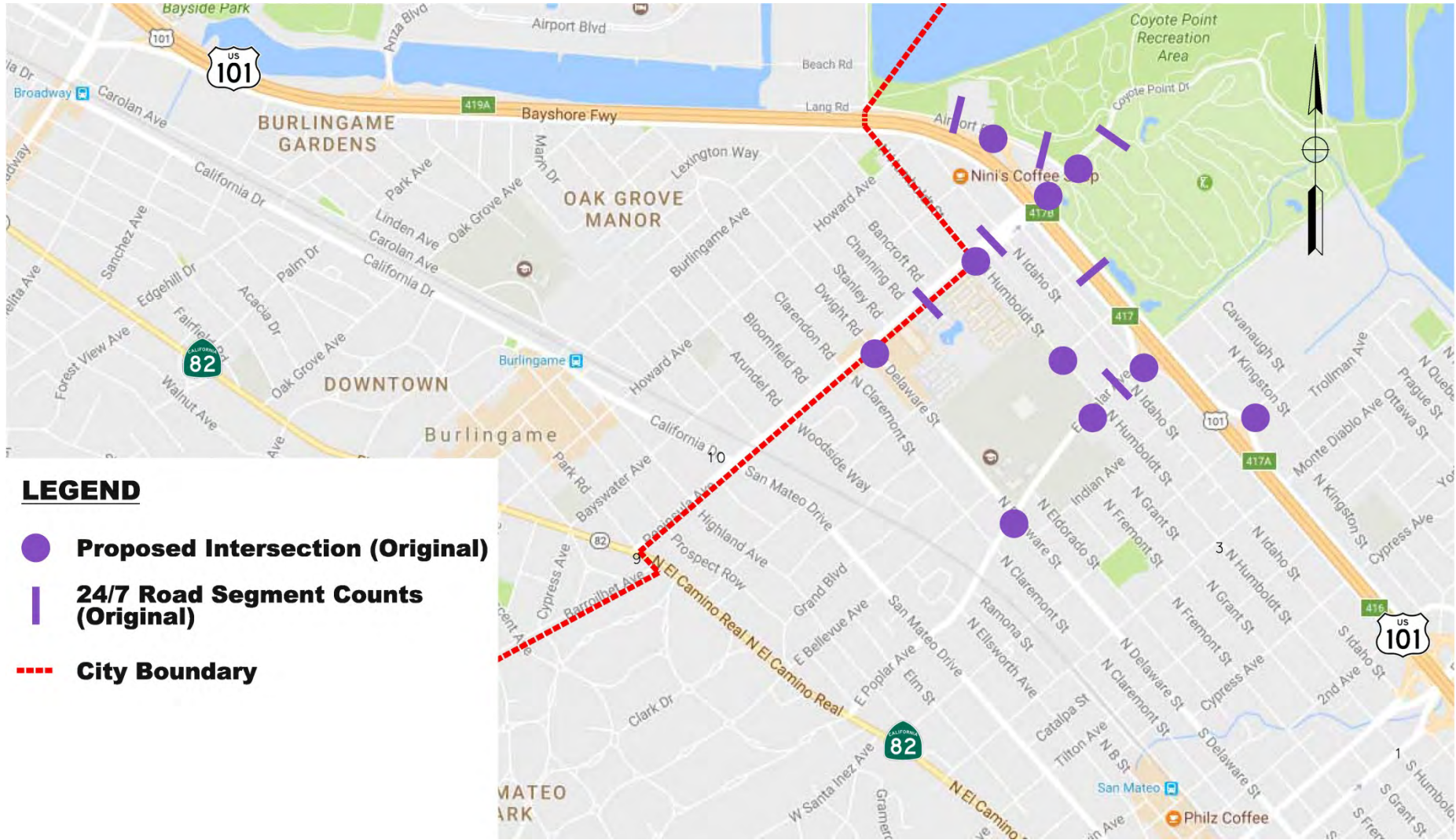
1. Check the existing forecast model (Santa Clara & San Mateo C/CAG) data against existing local street and intersection counts
2. Forecast open year (2025) and design year (2045)
3. Prepare traffic forecast memorandum for City/SMCTA/Caltrans Approval

F. Traffic Analysis for Design Alternatives

1. Intersection and roadway analysis, queue lengths & LOS
2. All three alternatives (including No-Build) will be evaluated

G. Recommend preferred alternative based on traffic operations analysis

Traffic Study Intersections (Original)



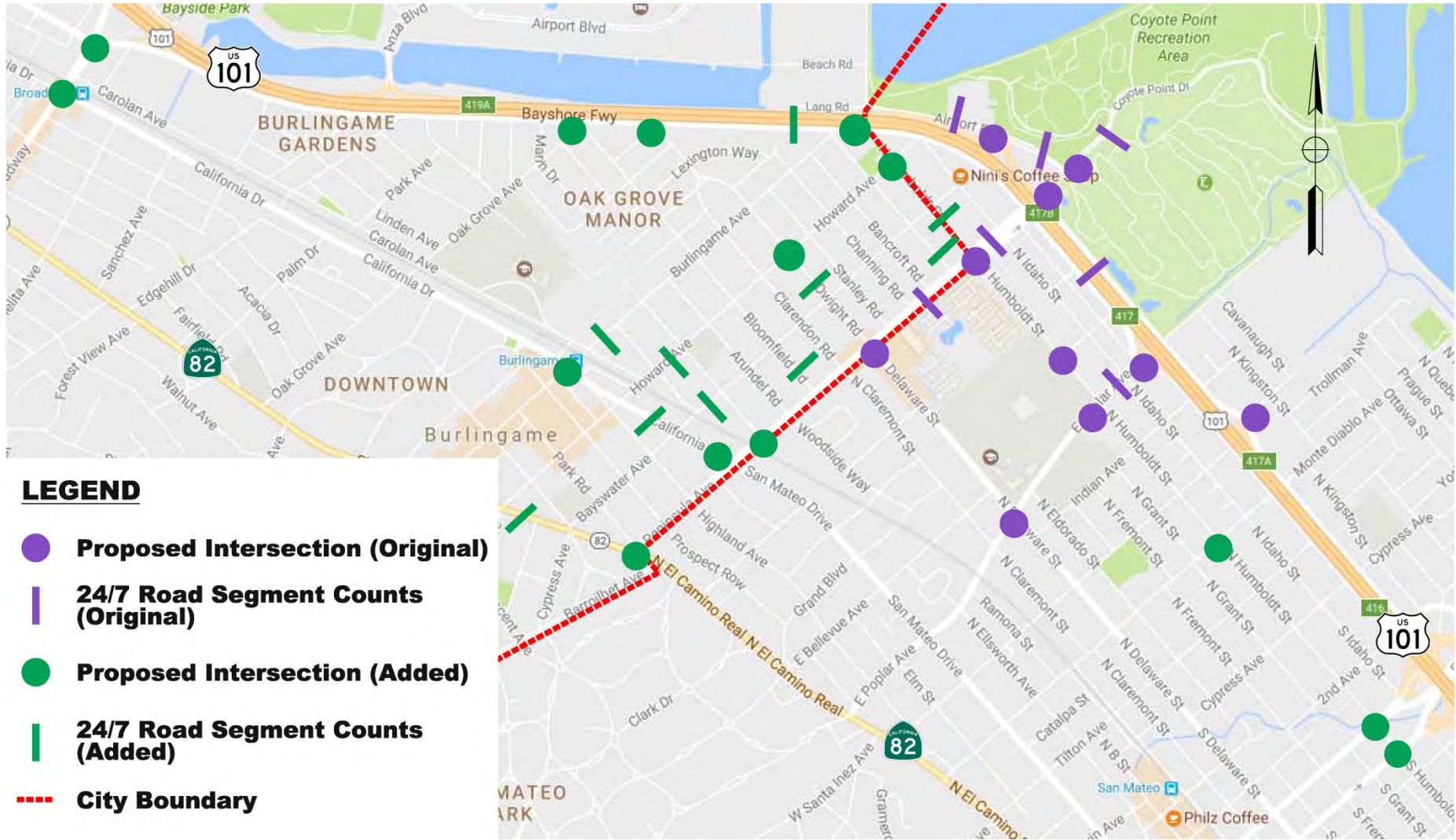
LEGEND

- **Proposed Intersection (Original)**
- | **24/7 Road Segment Counts (Original)**
- **City Boundary**

US 101 / Peninsula Avenue Interchange Project



Traffic Study Intersections (Original + Added)



US 101 / Peninsula Avenue Interchange Project



Comments or Questions?

For More Information:

Visit Us at: <http://www.cityofsanmateo.org/peninsula>

Email Us at: heap@cityofsanmateo.org

US 101 / Peninsula Avenue Interchange Project



Meeting Summary

Next Steps:

- Project Team will evaluate the public feedback
- Proceed with Traffic Analysis Work

Next meeting: **Fall 2017**

For More Information:

Visit Us at: <http://www.cityofsanmateo.org/peninsula>

Email Us at: heap@cityofsanmateo.org

US 101 / Peninsula Avenue Interchange Project



Thank You

For More Information:

Visit Us at: <http://www.cityofsanmateo.org/peninsula>

Email Us at: heap@cityofsanmateo.org

US 101 / Peninsula Avenue Interchange Project

